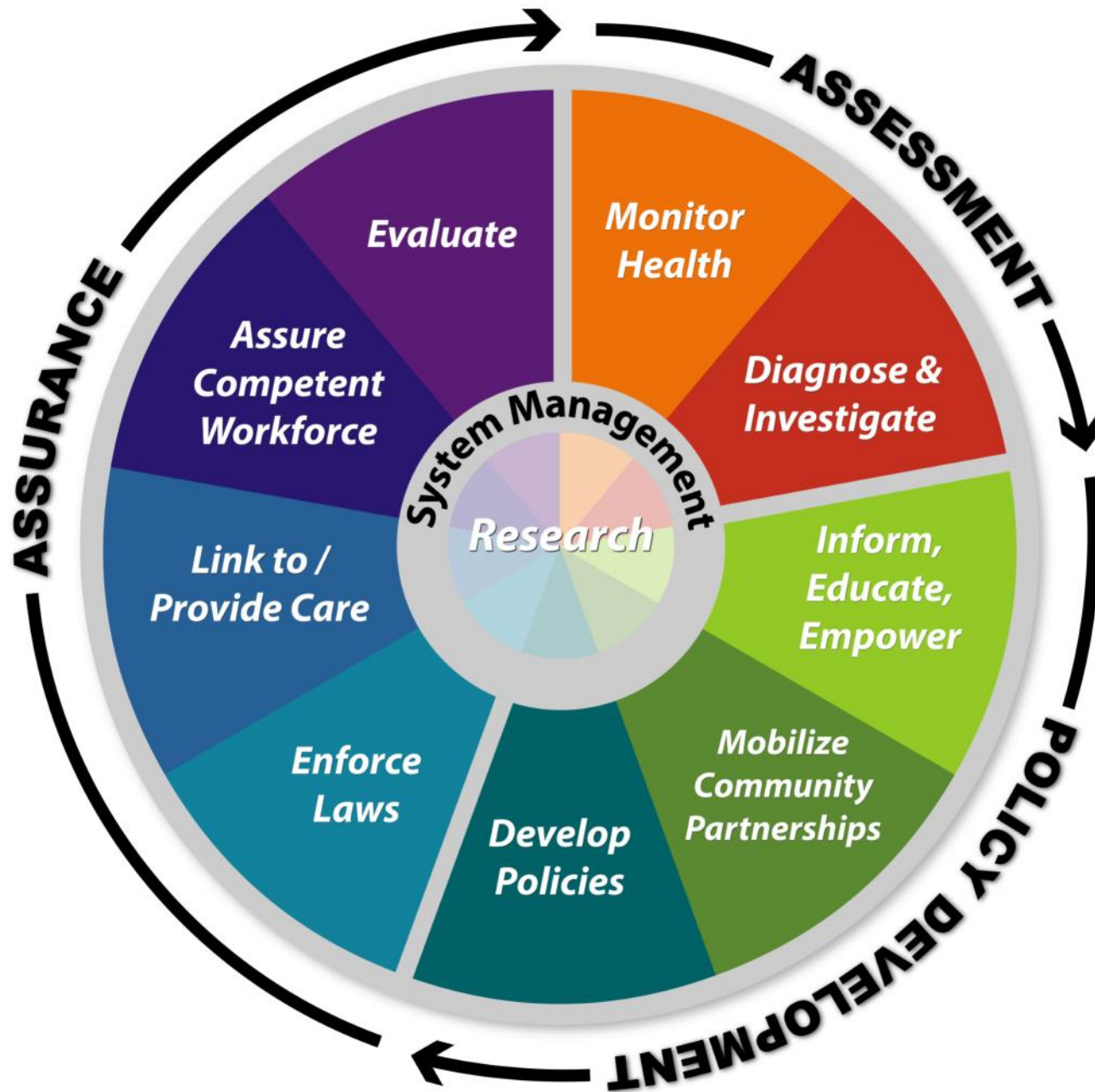


CALENDAR 2018



Essential Public Health Services

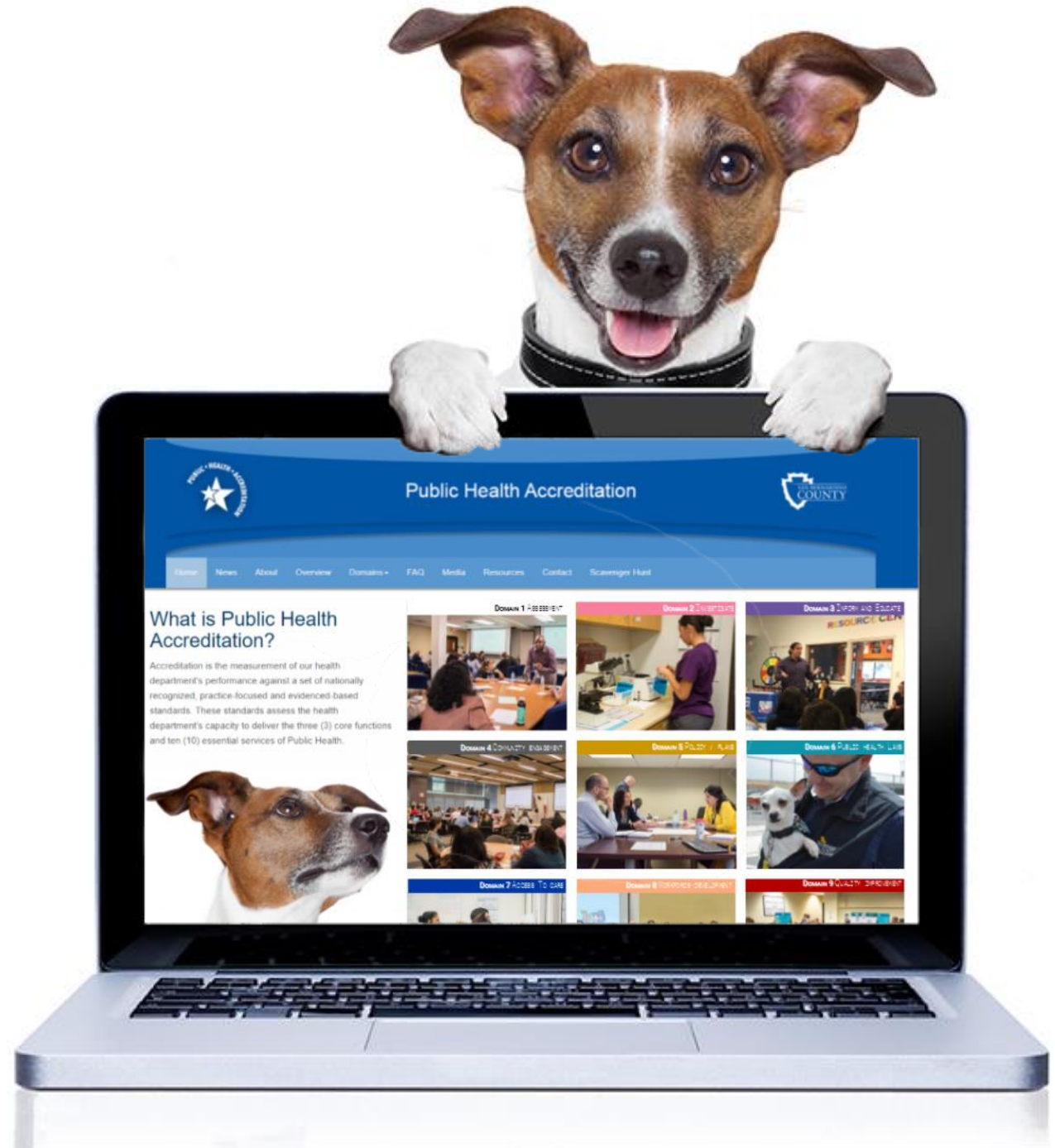


Where Do You Fit?

The Three Core Functions and 10 Essential Services of Public Health provide a foundation for all public health activities and serves as the structure for national Public Health Accreditation as each of the 12 Domains are taken directly from this Public Health Wheel.

Accreditation Website

The website is a wonderful tool that contains information about the department's accreditation efforts, staff photos, videos, and links to other resources.



Administrative Champions



Trudy Raymundo, Department of Public Health Director

- Domain 1 (Assessment)
- Domain 4 (Community Engagement)
- Domain 7 (Access to Care)



Corwin Porter, Department of Public Health Assistant Director

- Domain 5 (Policy/Plans)
- Domain 8 (Workforce Development)
- Domain 10 (Evidence-based Practices)



Dr. Maxwell Ohikhuare Health Officer

- Domain 1 (Assessment)



Brian Cronin, Chief of Animal Care & Control

- Domain 6 (Public Health Laws)
- Domain 8 (Workforce Development)



Daniel Perez, Chief of Disease Control

- Domain 2 (Investigate)
- Domain 3 (Inform/Educate)
- Domain 7 (Access to Care)



Josh Dugas, Chief of Environmental Health Services

- Domain 6 (Public Health Laws)
- Domain 10 (Evidence-based Practices)



Ken Johnston, Quality and Compliance Officer

- Domain 5 (Policy/Plans)
- Domain 7 (Access to Care)
- Domain 9 (Quality Improvement)
- Domain 10 (Evidence-based Practices)



Kelly Welty, Chief Financial Officer

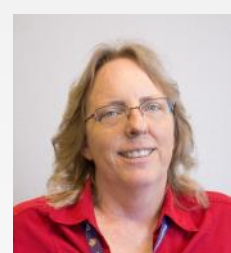
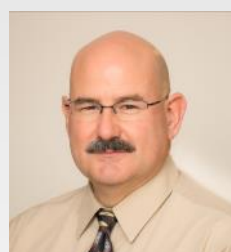
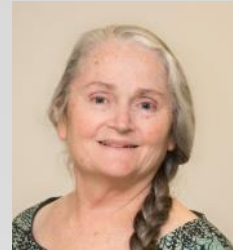
- Domain 7 (Access to Care)
- Domain 11 (Administration/Management)
- Domain 12 (Governance)

The Department of Public Health Executive Staff are taking an active role in the accreditation process. They each serve as an Administrative Champion on at least one Domain.

As an Administrative Champion, they are responsible for reviewing and approving all of their domain documents. They will participate in the site visit and provide support to their Domain Champions.

The support of the Executive Staff has been critical in keeping the department on task and their assistance is very much appreciated.

Domain Champions



Many of the Department of Public Health Leadership staff have been selected to be Domain Champions during the accreditation process. As a Domain Champion, they are tasked with reviewing all of the documentation that is submitted for their domain.

They are responsible for attending trainings, adhering to timelines and will ultimately be the representative selected to speak about the documentation with the Site Visitors. They are all to be commended for their participation in the accreditation process.

From Left to Right: Lea Morgan: Domain 1 (Assessment), Dori Baeza: Domain 1 (Assessment), Domain 5 (Policy/Plans), Jason Philippe: Domain 2 (Investigate), Domain 6 (Public Health Laws), Melissa German: Domain 2 (Investigate), Domain 5 (Policy/Plans), Susan Strong: Domain 2 (Investigate), Heather Cockerill: Domain 3 (Inform/Educate), Caryn Nunley: Domain 3 (Inform/Educate), Domain 4 (Community Engagement), Mayra Barcenas: Domain 5 (Policy/Plans), Jenny Hernandez: Domain 6 (Public Health Laws), Vanessa Long: Domain 7 (Access to Care), Domain 10 (Evidence-based Practices), Scott Rigsby: Domain 7 (Access to Care), Greg Beck: Domain 8 (Workforce Development), Maria Meza: Domain 9 (Quality Improvement), Ken Adams: Domain 10 (Evidence-based Practices), James Hakala: Domain 11 (Administration/Management), Melanie Reneau: Domain 11 (Administration/Management), Andi Cannon: Domain 12 (Governance)

2017 Employee & Program Spotlights: Year in Review

January: Clinic Operations



Shantela Stanfield
Registered Nurse



Elenita Jover
Licensed Vocational
Nurse

February: Nutrition



Bobby Lou Moll
Nutritionist

March: Animal Care & Control



Nishalet Wilson
Sup. Animal Control Officer II

April: Vital Statistics



Barbara Jean Williams
Office Assistant III

May: CA Children's Services



Marleah Moore
Sup. Pediatric
Rehabilitation Therapist I

June: Preparedness & Response Program



Ashley Flores
Medical Emergency
Planning Specialist

July: Information Services



Lori Geist
Automated Systems
Analyst I

August: Fiscal & Administrative Services



Lauren Ortiz
Accountant III

September: Family Health Services



Asuncion Williams
Clinic Supervisor



Loretta Schnaus
Sup. Public Health Nurse



Sara Hernandez-Singh
Sup. Public Health Nurse

October: Public Information



Lana Cao
Public Information Officer

November: Lab



Patricia Bolivar
Sup. Public Health Microbiologist

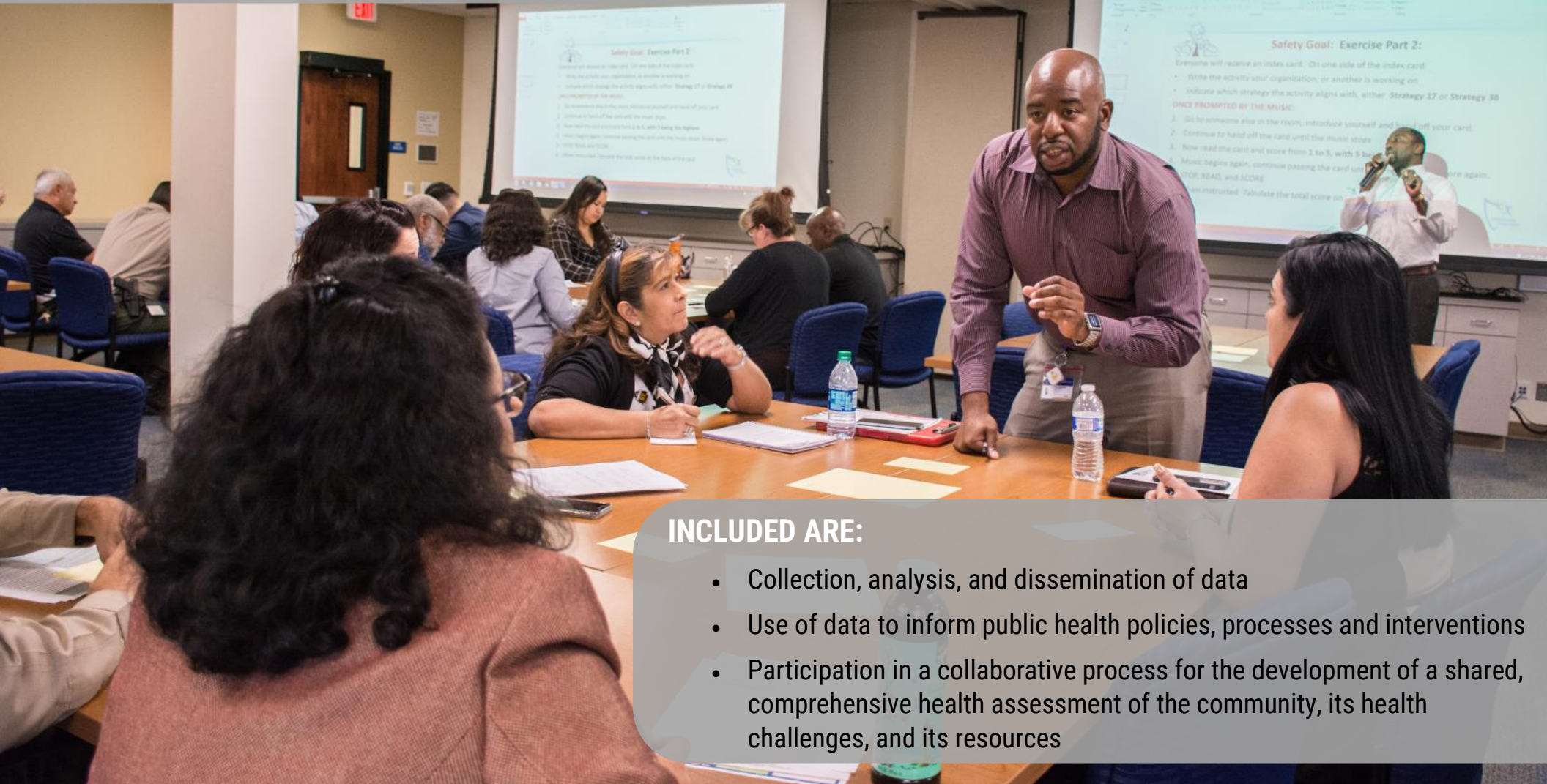
December: Ryan White Program



Laura Moore
Statistical Analyst

DOMAIN 1 ASSESSMENT

Domain 1 focuses on the ongoing assessment of the health of the population in the jurisdiction served by the health department.



INCLUDED ARE:

- Collection, analysis, and dissemination of data
- Use of data to inform public health policies, processes and interventions
- Participation in a collaborative process for the development of a shared, comprehensive health assessment of the community, its health challenges, and its resources

MAJOR COMPONENT: Comprehensive Community Health Assessment (CHA)

JANUARY

DECEMBER

FEBRUARY

					1	2
3	4	5	6	7	8	9
10	11	12	13	14	15	16
17	18	19	20	21	22	23
24	25	26	27	28	29	30
31						

				1	2	3
4	5	6	7	8	9	10
11	12	13	14	15	16	17
18	19	20	21	22	23	24
25	26	27	28			

SUNDAY	MONDAY	TUESDAY	WEDNESDAY	THURSDAY	FRIDAY	SATURDAY
	1 New Years Day	2 Holiday Off	3 Payday	4	5	6
7	8	9	10	11	12	13
14	15 Martin Luther King Day	16	17 Payday	18	19	20
21	22	23	24	25	26	27
28	29	30	31 Payday	<p>Tab Okonkwo (Community Vitals Signs) provides guidance to community members during an assessment exercise.</p> 		

DOMAIN 2 INVESTIGATE

Included are:

- Epidemiologic identification of emerging health problems
- Monitoring of disease
- Availability of public health laboratories
- Containment and mitigation of outbreaks
- Coordinated response to emergency situations
- Communication



Domain 2 focuses on the investigation of suspected or identified health problems or environmental public health hazards.

MAJOR COMPONENT: All Hazards/Emergency Operations Plan

FEBRUARY

JANUARY

1	2	3	4	5	6	
7	8	9	10	11	12	13
14	15	16	17	18	19	20
21	22	23	24	25	26	27
28	29	30	31			

MARCH

						1	2	3
4	5	6	7	8	9	10		
11	12	13	14	15	16	17		
18	19	20	21	22	23	24		
25	26	27	28	29	30	31		

SUNDAY MONDAY TUESDAY WEDNESDAY THURSDAY FRIDAY SATURDAY



Crystal Guzman (Clinic Operations) prepares a specimen sample to be sent out for testing.

1

2

3

4

5

6

7

8

9

10

11

12

13

14

15

16

17

Payday

18

19

20

21

22

23

24

Presidents Day

25

26

27

28

Payday

DOMAIN 3 INFORM AND EDUCATE



Domain 3 focuses on informing and educating the public.



This domain assesses the health department's processes for continuing two-way communication with the public as standard operating procedure.

MAJOR COMPONENT: Risk Communication Plan

MARCH

FEBRUARY

APRIL

			1	2	3		1	2	3	4	5	6	7
4	5	6	7	8	9	10	8	9	10	11	12	13	14
11	12	13	14	15	16	17	15	16	17	18	19	20	21
18	19	20	21	22	23	24	22	23	24	25	26	27	28
25	26	27	28				29	30					

SUNDAY	MONDAY	TUESDAY	WEDNESDAY	THURSDAY	FRIDAY	SATURDAY
		<p>Victor Garcia (Friday Night Live Program) educates youth in the city of Chino on the impact of cigarette smoking.</p>		1	2	3
4	5	6	7	8	9	10
11	12	13	14	15	16	17
18	19	20	<p>Payday</p>	22	23	24
25	26	27	<p>Payday</p>	29	30	31

DOMAIN 4 COMMUNITY ENGAGEMENT

Domain 4 focuses on community engagement.



Members of the community possess unique perspectives on how issues are manifested in the community, what and how community assets can be mobilized, and what interventions will be effective.

MAJOR COMPONENT: Collaborate with Community Members

APRIL

MARCH

MAY

			1	2	3							1	2	3	4	5		
4	5	6	7	8	9	10						6	7	8	9	10	11	12
11	12	13	14	15	16	17						13	14	15	16	17	18	19
18	19	20	21	22	23	24						20	21	22	23	24	25	26
25	26	27	28	29	30	31						27	28	29	30	31		

SUNDAY	MONDAY	TUESDAY	WEDNESDAY	THURSDAY	FRIDAY	SATURDAY
1	2	3	4	5	6	7
8	9	10	11 Payday	12	13	14
15	16	17	18	19	20	21
22	23	24	25 Payday	26	27	28
29	30	<p>Dr. Maxwell Ohikhuare provides opening words to the Community Sexually Transmitted Disease (STD) Task Force meeting at San Bernardino Valley College.</p>				

DOMAIN 5 POLICY/PLANS

Written policies and plans provide a resource to health department staff as well as to the public. Written policies and plans serve as tools to guide the health department's work and bring structure and organization to the department.



Domain 5 focuses on the development of public health policies and plans.

MAJOR COMPONENTS: All Hazards/Emergency Operations Plan, Strategic Plan, Community Health Improvement Plan

MAY

APRIL

JUNE

1	2	3	4	5	6	7							1	2
8	9	10	11	12	13	14	3	4	5	6	7	8	9	
15	16	17	18	19	20	21	10	11	12	13	14	15	16	
22	23	24	25	26	27	28	17	18	19	20	21	22	23	
29	30						24	25	26	27	28	29	30	

SUNDAY	MONDAY	TUESDAY	WEDNESDAY	THURSDAY	FRIDAY	SATURDAY
	Members of the Health Equity Strategic Planning workgroup brainstorm ideas to develop measurable objectives for the Strategic Plan.	1	2	3	4	5
6	7	8	9	10	11	12
13	14	15	16 Payday	17	18	19
20	21	22	23	24	25	26
27	28 Memorial Day	29	30	31		

DOMAIN 6 PUBLIC HEALTH LAWS

Public health laws are key tools for health departments as they work to promote and protect the health of the population.

Domain 6 focuses on the role of public health departments in the enforcement of public health related regulations, executive orders, statutes, and other types of public health laws.


- MAJOR COMPONENTS:**
- 1) Promote new Public Health laws/revise existing laws
 - 2) Provide education about the meaning, purpose, compliance requirements & benefits of Public Health laws

JUNE

MAY

JULY

	1	2	3	4	5	1	2	3	4	5	6	7	
6	7	8	9	10	11	12	8	9	10	11	12	13	14
13	14	15	16	17	18	19	15	16	17	18	19	20	21
20	21	22	23	24	25	26	22	23	24	25	26	27	28
27	28	29	30	31			29	30	31				

SUNDAY	MONDAY	TUESDAY	WEDNESDAY	THURSDAY	FRIDAY	SATURDAY
		<p>Frank Becerra (Animal Care & Control) at a pet adoption event at the Devore Animal Shelter. Public Health law requires all dogs over 4 months of age to be licensed.</p>			1	2
3	4	5	6	7	8	9
			Payday			
10	11	12	13	14	15	16
17	18	19	20	21	22	23
			Payday			
24	25	26	27	28	29	30

DOMAIN 7 ACCESS TO CARE

An important role of public health is the assessment of the population's access to health care services and the capacity of the health care system to meet the health care needs of the population.

Domain 7 focuses on the population's access to needed health care services.

Public health also has a role in efforts to increase access to needed health care services, particularly primary care.

MAJOR COMPONENTS:

- 1) Assess health care service capacity/access
- 2) Identify/implement strategies to improve access to health care services

DOMAIN 8 WORKFORCE DEVELOPMENT

Domain 8 focuses on the need for health departments to strategically approach the development of a competent workforce to perform public health duties.



A multi-disciplinary workforce that is matched to the specific community being served facilitates the interdisciplinary approaches required to address health equity and the population's public health issues.

MAJOR COMPONENT: Workforce Development Plan

AUGUST

JULY

1	2	3	4	5	6	7
8	9	10	11	12	13	14
15	16	17	18	19	20	21
22	23	24	25	26	27	28
29	30	31				

SEPTEMBER

						1
2	3	4	5	6	7	8
9	10	11	12	13	14	15
16	17	18	19	20	21	22
23	24	25	26	27	28	29
30						

SUNDAY	MONDAY	TUESDAY	WEDNESDAY	THURSDAY	FRIDAY	SATURDAY
		Mentors, mentees, and Workforce Development Committee members participate in a reconvening meeting during the halfway point of the pilot Mentoring Program.	1 Payday	2	3	4
5	6	7	8	9	10	11
12	13	14	15 Payday	16	17	18
19	20	21	22	23	24	25
26	27	28	29 Payday	30	31	

DOMAIN 9 QUALITY IMPROVEMENT



Domain 9 focuses on the use and integration of performance management and quality improvement practices and processes for the continuous improvement of the public health department's practices, programs, and interventions.

- MAJOR COMPONENTS:**
- 1) Performance Management System
 - 2) Quality Improvement Plan

SEPTEMBER

AUGUST

	1	2	3	4		
5	6	7	8	9	10	11
12	13	14	15	16	17	18
19	20	21	22	23	24	25
26	27	28	29	30	31	

OCTOBER

	1	2	3	4	5	6
7	8	9	10	11	12	13
14	15	16	17	18	19	20
21	22	23	24	25	26	27
28	29	30	31			

SUNDAY MONDAY TUESDAY WEDNESDAY THURSDAY FRIDAY SATURDAY



During a Quality Improvement training, staff develop a flowchart to diagram a future project to improve work processes.

2

3

4

5

6

7

1

8

Labor Day

9

10

11

12

13

14

15

Payday

16

17

18

19

20

21

22

23

24

25

26

27

28

29

Payday

30

DOMAIN 10 EVIDENCE-BASED PRACTICES

Domain 10 focuses on the role that health departments play in building and advancing the science of public health.

Health departments should employ evidence-based practices for increased effectiveness and credibility. Health departments also have important roles in developing new evidence. Health departments should apply innovation and creativity in providing public health services appropriate for the populations they serve.

MAJOR COMPONENT: Identify, use and promote best available evidence for making informed Public Health practice decisions

OCTOBER

SEPTEMBER

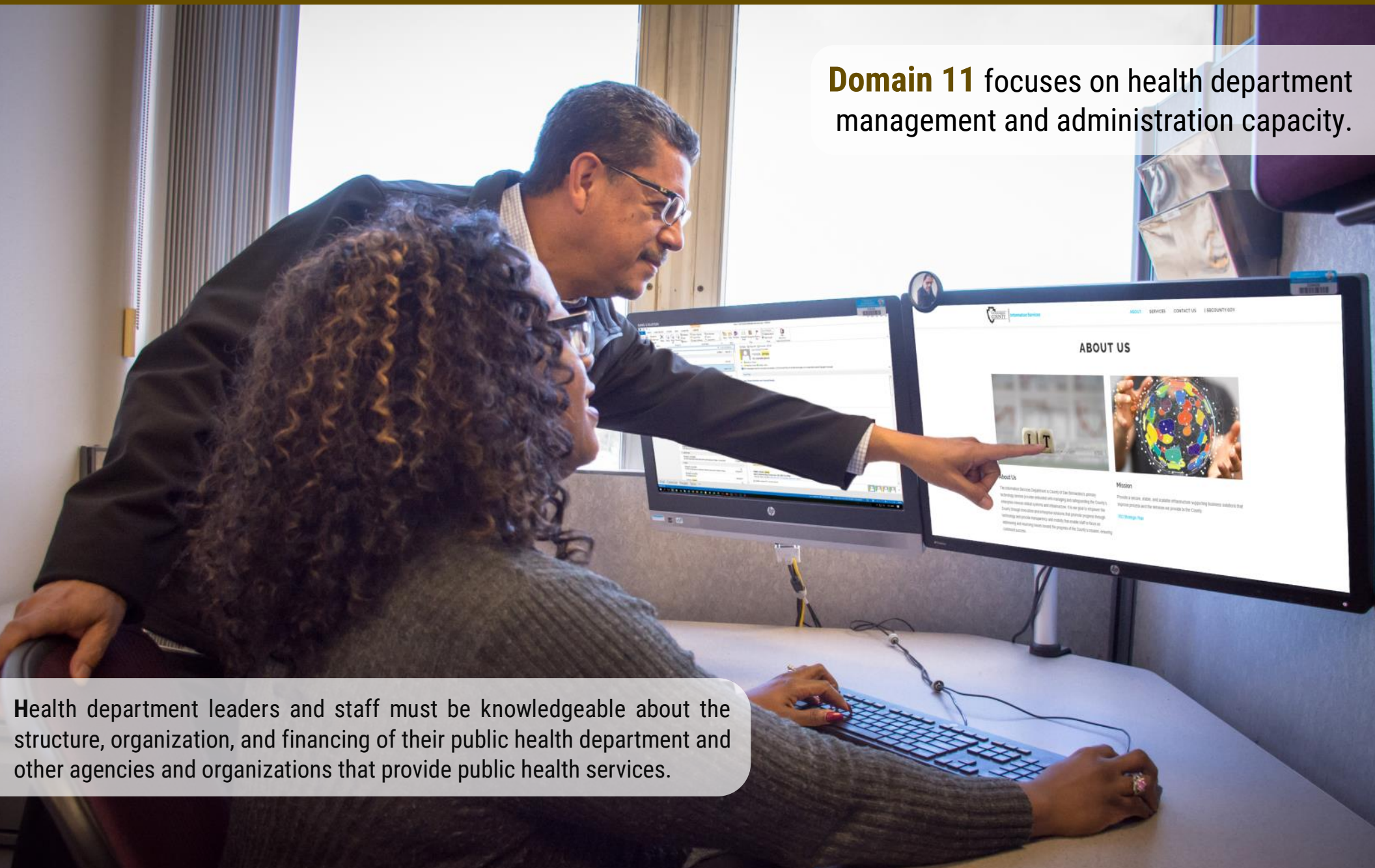
NOVEMBER

							1								1	2	3
2	3	4	5	6	7	8			4	5	6	7	8	9	10		
9	10	11	12	13	14	15			11	12	13	14	15	16	17		
16	17	18	19	20	21	22			18	19	20	21	22	23	24		
23	24	25	26	27	28	29			25	26	27	28	29	30			

SUNDAY	MONDAY	TUESDAY	WEDNESDAY	THURSDAY	FRIDAY	SATURDAY
	1	2	3	4	5	6
7	8 Columbus Day	9	10 Payday	11	12	13
14	15	16	17	18	19	20
21	22	23	24 Payday	25	26	27
28	29	30	31	<p>Brad Larson (Environmental Health Services) posts an inspection grade on the window of a food facility.</p>		

DOMAIN 11 ADMINISTRATION/MANAGEMENT

Domain 11 focuses on health department management and administration capacity.



Health department leaders and staff must be knowledgeable about the structure, organization, and financing of their public health department and other agencies and organizations that provide public health services.

MAJOR COMPONENTS:

- 1) Develop/maintain an operational infrastructure to support Public Health functions
- 2) Establish effective financial management systems

NOVEMBER

OCTOBER

1	2	3	4	5	6	
7	8	9	10	11	12	13
14	15	16	17	18	19	20
21	22	23	24	25	26	27
28	29	30	31			

DECEMBER

						1
2	3	4	5	6	7	8
9	10	11	12	13	14	15
16	17	18	19	20	21	22
23	24	25	26	27	28	29
30	31					

SUNDAY	MONDAY	TUESDAY	WEDNESDAY	THURSDAY	FRIDAY	SATURDAY
		Jimmy Pineda and Nina Jackson (Information Services) conduct research to fulfill a request for technical support.		1	2	3
4	5	6	7	8	9	10
11	12	13	14 Payday	15	16	17
18	19 Veterans Day	20	21	22	23	24
25	26	27	28	29 Thanksgiving	30 Holiday Off	

DOMAIN 12 GOVERNANCE

Governing entities both directly and indirectly influence the direction of a health department and should play a key role in accreditation efforts.

BOARD OF SUPERVISORS



Domain 12 focuses on the health department's support and engagement of its governing entity in maintaining and strengthening the public health infrastructure for the jurisdiction served.

MAJOR COMPONENT: Maintain capacity to engage the Public Health governing entity

DECEMBER

NOVEMBER

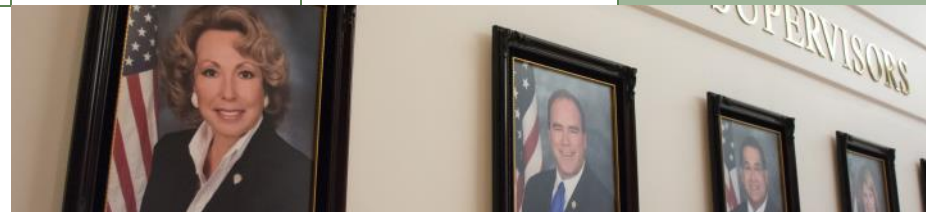
		1	2	3		
4	5	6	7	8	9	10
11	12	13	14	15	16	17
18	19	20	21	22	23	24
25	26	27	28	29	30	

JANUARY

	1	2	3	4	5	
6	7	8	9	10	11	12
13	14	15	16	17	18	19
20	21	22	23	24	25	26
27	28	29	30	31		

SUNDAY	MONDAY	TUESDAY	WEDNESDAY	THURSDAY	FRIDAY	SATURDAY
						1
2	3	4	5	6	7	8
8	10	11	12 Payday	13	14	15
16	17	18	19	20	21	22
23	24	25	26 Payday	27	28	29
30	31 Christmas Eve	25 Christmas Day				

Our Board of Supervisors consists of Robert Lovingood (1st District), Janice Rutherford (2nd District), James Ramos (3rd District), Curt Hagman (4th District), and Josie Gonzales (5th District).



New Year's Eve

THANK YOU



A very special Thank You to all of the amazing Public Health staff participating in the department's accreditation efforts!