

# Informational Meeting

## CalPortland Oro Grande Engineered Municipal Solid Waste (EMSW) Conversion Facility (SWIS# 36-AA-0513)

October 3, 2024

CalPortland Oro Grande Cement Plant

19409 National Trails Hwy, Oro Grande, 92368

5:00PM - 6:00PM

**Public Information Meeting**  
**CalPortland Oro Grande Engineered Municipal Solid Waste (EMSW) Conversion Facility**  
**APPLICATION FOR NEW SOLID WASTE FACILITY PERMIT (SWFP)**

**October 3, 2024**

**5:00PM - 6:00PM**

**19409 National Trails Hwy**

**Oro Grande, CA 92368**

*Virtual Attendance Option via Teams - 292 593 387 696 Passcode: RfP3Mf*

*Virtual Attendance Option via phone - (661) 568-6806 ID: 340 632 03#*

---

## Rules

- ▶ Please raise your hand if you are requesting to speak. You may leave your comments/questions in the Chat.
- ▶ State your name and affiliation before speaking.

---

Written comments may be sent to Noah Westbury

**Fax:** (909) 387-4323 or

**E-mail:** [Noah.Westbury@DPH.SBcounty.gov](mailto:Noah.Westbury@DPH.SBcounty.gov)

**Public Information Meeting  
CalPortland Oro Grande EMSW Conversion Facility  
APPLICATION FOR NEW SOLID WASTE FACILITY PERMIT (SWFP)**

## Agenda

- ▶ 5:00 PM - 5:05 PM - Sign-in, buffer time for the public to join, and rules.
- ▶ 5:05 PM - 5:15 PM - Local Enforcement Agency Presentation
- ▶ 5:15 PM - 5:30 PM - CalPortland Presentation
- ▶ 5:30 PM - 5:50 PM - Public Comments and Questions
- ▶ 5:50 PM - 6:00 PM - Extra time for those who missed the presentations

Written comments may be sent to Noah Westbury  
Fax: (909) 387-4323 or  
E-mail: [Noah.Westbury@DPH.SBcounty.gov](mailto:Noah.Westbury@DPH.SBcounty.gov)

# Solid Waste Local Enforcement Agency

- ▶ San Bernardino County Environmental Health Services is the Local Enforcement Agency (LEA).
- ▶ The LEA regulates solid waste facilities in San Bernardino County as certified and authorized by CalRecycle.

## Contact information

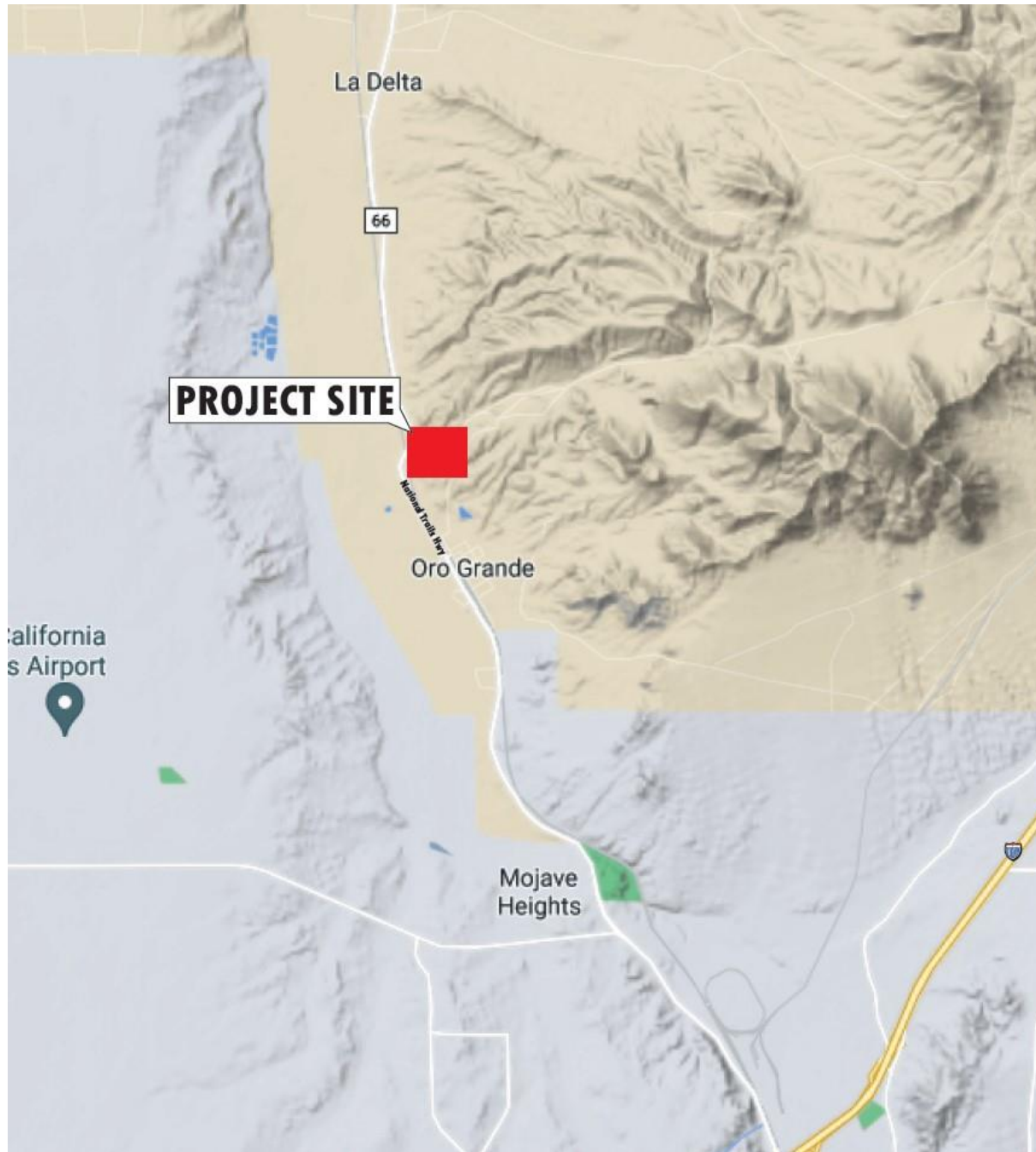
Phone Number - 1 (800) 442-2283

Noah Westbury, LEA Supervising Environmental Health Specialist

[Noah.Westbury@dph.sbcounty.gov](mailto:Noah.Westbury@dph.sbcounty.gov)

# CalPortland Oro Grande EMSW Conversion Facility

- ▶ Facility Location:
  - Located at the existing CalPortland Oro Grande Cement Plant
  - 19409 National Trails Hwy
  - Oro Grande, CA 92368
- ▶ EMSW Conversion Facility- Accepted materials include EMSW from pre-approved EMSW producers.
  - ▶ EMSW is defined by [PRC 40131.2](#). EMSW must meet 8 criteria including: (1) The waste to be converted replaces or supplements the use of fossil fuels. (2) The waste to be converted and any products of conversion do not meet the criteria of a hazardous waste adopted by the DTSC pursuant to Section 25141 of the Health and Safety Code. (3) The conversion maximizes the net calorific value and burn rate of the waste. (4) The waste contains less than 25% moisture and less than 25% noncombustible waste. (5) The waste is handled according to solid waste handling requirements, and no more than a 7-day supply may be stored at one time. (6) No more than 500 tons may be converted per day. (7) The waste has an energy content greater than or equal to 5,000 BTU/lb, and (8) The material is mechanically processed at a permitted and approved Transfer/Processing facility to reduce the fraction of chlorinated plastics and materials.
- ▶ Maximum Daily Tonnage: 500 tons per day (tpd) of EMSW
- ▶ Maximum Vehicle Traffic: 30 trucks per day
- ▶ Days and hours of Operation: 24 hours per day, 7 days per week





General Location of Proposed EMSW Conversion Facility

# Summary of LEA Duties

- ▶ **Monthly inspections** by the LEA to ensure the facility meets solid waste state minimum standards. *Summary of operating standards are on the next slide.*
- ▶ **Complaint inspections** are conducted if the LEA receives a complaint regarding the EMSW conversion facility.
- ▶ The LEA reviews the facility's permit at least once every five years to ensure all activities stay consistent with their operating documents.
- ▶ The operator will be held to the solid waste minimum standards, its environmental documents (CEQA), and its operating documents (TPR).



# Operating Standards

- § 17407.1. Burning Wastes and Open Burning.
- § 17407.2. Cleaning.
- § 17407.3. Drainage Control.
- § 17407.4. Dust Control.
- § 17407.5. Hazardous Liquid, and Special Wastes.
- § 17408.1. Litter Control.
- § 17408.2. Medical Wastes.
- § 17408.3. Noise Control.
- § 17408.4. Non-Salvageable Items.
- § 17408.5. Nuisance Control.
- § 17408.6. Maintenance Program.
- § 17408.7. Personnel Health and Safety.
- § 17408.8. Protection of Users.
- § 17409.1. Roads.
- § 17409.2. Sanitary Facilities.
- § 17409.3. Scavenging and Salvaging.
- § 17409.4. Signs.
- § 17409.5. Loadchecking—Prohibited Wastes.
- § 17409.6. Parking.
- § 17410.1. Solid Waste Removal.
- § 17410.2. Supervision and Personnel.
- § 17410.3. Training.
- § 17410.4. Vector, Bird and Animal Control.
- Article 6.3 Record Keeping Requirements

# Additional Standards

- **Additional Title 14 Requirements**

- § 17415.1. Communications Equipment.
- § 17415.2. Fire Fighting Equipment.
- § 17416.1. Housekeeping.
- § 17416.2. Lighting.
- § 17416.3. Equipment.
- § 17418.1. Site Security.
- § 17418.2. Site Attendant.
- § 17418.3. Traffic Control.
- § 17419.1. Visual Screening.
- § 17419.2. Water Supply.

- **Compliance with PRC, Part 1, Chapter 2, Section 40131.2**

- ▶ (a) “Engineered municipal solid waste conversion” or “EMSW conversion” means the conversion of solid waste through a process that meets all of the following requirements:
  - ▶ (1) The waste to be converted is beneficial and effective in that it replaces or supplements the use of fossil fuels.
  - ▶ (2) The waste to be converted, the resulting ash, and any other products of conversion do not meet the criteria or guidelines for the identification of a hazardous waste adopted by the Department of Toxic Substances Control pursuant to [Section 25141 of the Health and Safety Code](#).
  - ▶ (3) The conversion is efficient and maximizes the net calorific value and burn rate of the waste.
  - ▶ (4) The waste to be converted contains less than 25 percent moisture and less than 25 percent noncombustible waste.
  - ▶ (5) The waste received at the facility for conversion is handled in compliance with the requirements for the handling of solid waste imposed pursuant to this division, and no more than a seven-day supply of that waste, based on the throughput capacity of the operation or facility, is stored at the facility at any one time.
  - ▶ (6) No more than 500 tons per day of waste is converted at the facility where the operation takes place.
  - ▶ (7) The waste has an energy content equal to, or greater than, 5,000 BTU per pound.
  - ▶ (8) The waste to be converted is mechanically processed at a transfer or processing station to reduce the fraction of chlorinated plastics and materials.

# Submit Questions, Comments, or Concerns

## Contact the LEA for the following:

- Questions, comments, or concerns regarding this facility
- Requests for additional information
- To schedule an appointment to review the SWFP application package
- Appeals process information pursuant to Public Resources Code Section 44307 to challenge the LEA's acceptance and proposed issuance of the SWFP
- For any other reason

Submit questions, comments, or concerns about the facility no later than 14 days after this informational meeting (**October 17, 2024**):

- **Email:** [Noah.Westbury@dph.sbcounty.gov](mailto:Noah.Westbury@dph.sbcounty.gov)
- **Call or Text:** (800) 442-2283
- **Fax:** (909) 387-4323
- **Web:** <https://ehs.sbcounty.gov/contact-ehs/>
- **In Person:** Monday – Friday 8 AM to 5 PM

### **San Bernardino Office – Environmental Health Services**

385 N. Arrowhead Ave, 2nd Floor  
San Bernardino, CA 92415

### **Jerry Lewis High Desert Government Center – Environmental Health Services**

15900 Smoke Tree Street, Suite 131  
Hesperia, CA 92345