



NEWS



News Headlines 07/12/2021

- Two injured in head-on crash on National Trails Highway
- 2 Seriously Injured in Oro Grande Car Crash on Route 66 near Robinson Ranch Road
- 3 horses die in Bloomington vegetation fire that consumed animal stable
- Wildfires blaze across western states as two die in Arizona plane crash
- Northern California wildfires: Beckwourth Complex jumps highway and burns into Doyle

Two injured in head-on crash on National Trails Highway

Staff Writer, Victor Valley News Group

Posted: July 10,2021



ORO GRANDE, Calif. (VVNG.com) — A hit-and-run crash on National Trails Highway left two people critically injured Saturday afternoon.

It happened at about 12:45 pm, on July 10th along Route 66 near Robinson Ranch Road/Polish Lane, and involved a silver 4-door sedan and a gold 4-door sedan.

San Bernardino County Fire arrived on scene and reported they had one person trapped and two additional patients, for a total of three. Firefighters used the jaws of life to extricate a female passenger of the gold sedan.

According to witnesses, the driver of the other vehicle fled the scene leaving his injured male passenger behind. Firefighters requested two helicopters land in a nearby field at Riverside Preparatory to airlift two people to out-of-area trauma centers.

Jenette Schade commented in the Life in Helendale/Silver Lakes, CA Facebook group and said the driver who caused the crash was under the influence of marijuana and unable to drive straight.

Another group member, Jeffrey Schade said he was the 3rd car back from the car that was hit and the driver wasn't attempting to pass.

“He just went straight [over] the curved road rather than staying in his lane. The car smelled bad of weed and the driver of the silver car, (at fault) got out yelled he was ok then ran over the train tracks into the desert,” commented Schade.

National Trails Highway was shut down for the investigation prompting traffic to have to detour using Highway 395.

The California Highway Patrol Victorville station is handling the traffic collision investigation.

<https://www.vvng.com/two-injured-in-head-on-crash-on-national-trails-highway/>

2 Seriously Injured in Oro Grande Car Crash on Route 66 near Robinson Ranch Road

Staff Writer, Accident News Teams

Posted: July 11,2021



San Bernardino, California (July 11, 2021) – Two people were critically injured in a car crash near Oro Grande on Saturday afternoon.

According to the California Highway Patrol, the accident happened along Route 66 near Robinson Ranch Road/Polish Lane at about 12:45 p.m. July 10.

A gold 4-door sedan and a silver 4-door sedan were involved in the collision. The events preceding the collision were not immediately established.

San Bernardino County Fire responded to the incident had to extricate a female passenger who was trapped in the gold sedan.

Two helicopters landed in a nearby field at Riverside Preparatory to airlift two trauma patients.

A third person was transported to the hospital in unknown condition.

National Trails Highway was temporarily shut down as the police examined the scene.

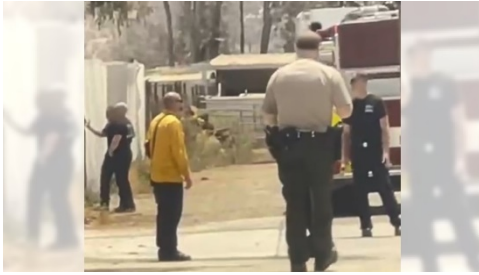
The CHP Victorville station is investigating the accident.

<https://newsni.com/latest-news/2-seriously-injured-in-oro-grande-car-crash-on-route-66-near-robinson-ranch-road/>

3 horses die in Bloomington vegetation fire that consumed animal stable

Staff Writer, California News Times

Posted: July 12,2021



Three horses died in Bloomington on Sunday, July 11, according to the **San Bernardino County Fire Department**.

Fire department spokesman Captain Jeremy Khan said the fire brigade responded to a call for a large pillar of smoke from the animal stables at 18300 blocks on Santa Ana Avenue at around 11:40 am. They arrived to discover the flames spreading over nearby brushes and eucalyptus trees, Khan said.

Khan said the firefighters were able to turn off the wood and extinguish the overall flame in about 20 minutes.

According to Kahn, three horses were found dead in a fire in the stables.

The cause of the fire was under investigation.

<https://californianewstimes.com/3-horses-die-in-bloomington-vegetation-fire-that-consumed-animal-stable-san-bernardino-sun/435927/>

Wildfires blaze across western states as two die in Arizona plane crash

Staff Writer, The Guardian

Posted: July 12, 2021



A firefighter sprays water while trying to stop the Sugar Fire, part of the Beckwourth Complex Fire, from spreading to neighboring homes in Doyle, California, on Saturday. Photograph: Noah Berger/AP

Firefighters working in searing weather struggled to contain a northern California wildfire that forced the temporary closure of a major highway, one of several large blazes burning across the US west amid another heatwave that shattered records and strained power grids.

In Arizona, a small plane crashed on Saturday during a survey of a wildfire in rural Mohave county, killing both crew members on board. The Beech C-90 aircraft was helping perform reconnaissance over the lightning-caused Cedar Basin fire, near the tiny community of Wikieup north-west of Phoenix, when it went down around noon.

Officials identified the victims as Jeff Piechura, 62, a retired Tucson-area fire chief who was working for the Coronado national forest, and Matthew Miller, 48, a pilot with Falcon Executive Aviation contracted by the US Forest Service. The National Transportation Safety Board is investigating.

“Our hearts go out to the families of our brave wildland firefighters,” an Arizona Bureau of Land Management spokesperson said.

In California, officials asked all residents to reduce power consumption after a major wildfire in southern Oregon knocked out interstate power lines, preventing up to 5,500MW of electricity from flowing into the state.

The California Independent System Operator, which runs the state’s power grid, said the Bootleg fire took three transmission lines off-line, straining electricity supplies as temperatures in the area soared.

“The Bootleg fire will see the potential for extreme growth today,” said the National Weather Service in Medford, Oregon.

Pushed by strong winds, the blaze exploded to 224 square miles (580 sq km) as it raced through heavy timber in Oregon’s Fremont-Winema national forest, near the town of Sprague River.

To the south-east, the largest wildfire of the year in California was raging near the border with Nevada. The Beckwourth Complex fire – a combination of two lightning-caused blazes burning 45 miles north of Lake Tahoe – showed no sign of slowing its rush north-east from the Sierra Nevada forest region after doubling in size between Friday and Saturday.

Late on Saturday, flames jumped US395, which was closed near the small town of Doyle in California. The lanes reopened Sunday and officials urged motorists to use caution and keep moving along the key north-south route where flames were still active.

“Do not stop and take pictures,” said the fire’s operations section chief, Jake Cagle. “You are going to impede our operations if you stop and look at what’s going on.”

Cagle said structures had burned in Doyle, but he didn’t have an exact number. Bob Prary, who manages the Buck-Inn Bar in the town of about 600 people, said he saw at least six houses destroyed. The fire was smoldering on Sunday in and around Doyle, but he feared some remote ranch properties were still in danger.

“It seems like the worst is over in town, but back on the mountainside the fire’s still going strong. Not sure what’s going to happen if the wind changes direction,” Prary said. Erratic winds were a concern for firefighters, Cagle noted, with gusts expected to reach 20mph (32km/h).

The blaze, which was only 9% contained, increased to 131 square miles. Temperatures in the area could top 100F (37C) again on Sunday.

It was one of several fires threatening homes across western states that were expected to see triple-digit heat through the weekend as a high-pressure zone blankets the region.

Death Valley in south-eastern California’s Mojave Desert reached 128F on Saturday, according to the National Weather Service’s reading at Furnace Creek. The shockingly high temperature was actually lower than the previous day, when the location reached 130F.

Death Valley also recorded a 130F day in August of last year. If that reading and the one Friday are confirmed, they will be the hottest highs recorded there since July 1913, when the Furnace Creek desert hit 134F (57C), considered the highest measured ambient temperature on Earth.

The National Weather Service warned the dangerous conditions could cause heat-related illnesses.

Palm Springs in southern California also hit a record high temperature of 120F on Saturday, while Las Vegas tied the all-time record high of 117F.

NV Energy, Nevada’s largest power provider, urged customers to conserve electricity because of the heatwave and wildfires.

In Idaho, Governor Brad Little mobilized the national guard to help fight fires sparked after lightning storms swept across the drought-stricken region.

<https://www.theguardian.com/us-news/2021/jul/11/northern-california-wildfire-heatwave>

Northern California wildfires: Beckwourth Complex jumps highway and burns into Doyle

Vincent Moleski, The Sacramento Bee

Posted: July 10, 2021



A firefighter sprays water while trying to stop the Sugar Fire, part of the Beckwourth Complex Fire, from spreading to neighboring homes in Doyle, California, on Saturday. Photograph: Noah Berger/AP

Four major wildfires continue to burn in Northern California amid triple-digit temperatures and have already burned thousands of acres of fuel and destroyed several homes.

The largest among these is now the Beckwourth Complex, two fires burning 45 miles north of Lake Tahoe in Plumas County. The fire has seen rapid growth, outpacing the Lava Fire to become the largest active fire in Northern California as well as the largest in California this year.

While containment has been improving on the Salt, Lava and Tennant fires, the Beckwourth Complex fires are still threatening homes in eastern Plumas County and continue to expand rapidly. Between these four fires, more than 132,000 acres have been burned.

The Beckwourth Complex fires, located between the small community of Beckwourth in Plumas County and the Nevada state line, have burned 83,926 acres and are 8% contained.

The complex is comprised of the Dotta Fire, which started on June 30, and the Sugar Fire, which started on July 2, and both were sparked by lightning.

On Saturday the fast-moving Sugar Fire forced a temporary closure of Highway 395 through Sunday morning after the fire jumped the road and burned into the town of Doyle. Several buildings in Doyle were seen burning before the highway was reopened around 10:30 a.m. A damage assessment team has been assigned to the fire complex by Forest Service officials.

The highway was closed again just after 1 p.m. Sunday between Highway 70 and County Road A-26 as the fire encroached toward traffic.

The Forest Service said Sunday morning that crews “progressed in constructing dozer lines past the town of Doyle” as well as “behind structures along Old Highway 395.”

U.S. Forest Service said earlier in the week that the fires would soon be under control, but were whipped up by hot winds, pushing the Sugar Fire to grow by eight times its size on Thursday. Fire lines were forced back and containment plummeted from 30% down to 9%, then down again to 8% by Saturday.

Between Friday and Saturday morning, the complex more than doubled its span, growing from about 25,000 acres to its current size. That growth was attributed to the Sugar Fire, as the Dotta Fire remains stagnant. The Dotta Fire is only 670 acres in size, and is 99% contained.

By Sunday, the Sugar fire had grown by nearly 30,000 more acres.

“This extreme fire behavior is due to several factors coming alignment with critically dry and receptive fuels, hot temperatures, topography arrangement and southwest winds funneling through them,” U.S. Forest Service officials said in a Saturday morning update.

Firefighters are expecting another day of high fire activity.

“Extreme fire behavior is expected again today with increasingly gusty winds up to 25 miles per hour and relative humidity down to 9%,” Forest Service officials said in a Sunday morning update.

Evacuation orders remain in place for parts of Plumas County. Communities in Dixie Valley were told to leave as the fire surged on Thursday, and several roads are still shut down in the fire zone. U.S. Forest Service officials said communities near Doyle Grade Road and Constantia Road have been evacuated, as the Sugar Fire is spotting within a mile of the area. Additional evacuations were ordered in Nevada’s Washoe County.

On Friday, the Forest Service observed a pyrocumulonimbus cloud develop over the fire — a kind of thunder cloud formed from hot smoky air above wildfires — and also said there were reports of lightning stemming from this pyrocumulonimbus on the east side of the fire.

A total of 1,790 fire personnel are assigned to the Beckwourth Complex.

SALT FIRE

The Salt Fire started on June 30 just south of Lakehead in the Shasta-Trinity National Forest and has burned 12,650 acres. It is 70% contained, up by 10% from Friday.

No new fire spread occurred on Friday night, Saturday or early Sunday morning, according to the U.S. Forest Service, and several evacuation orders have been eased as crews get a handle on the wildfire.

“Fire activity is currently limited to isolated smoldering pockets within the interior of the fire perimeter,” a Saturday morning update read. “Crews continue to complete and strengthen containment lines in all areas of the fire and also address interior areas of lingering heat. As the fire enters the next stage, crews will begin the process of mop up.”

A Sunday morning update indicated that there were no longer any hot spots within the fire zone. and crews were working to strengthen containment lines. Overnight, crews pushed containment up from 55% to its current 70%. All evacuation orders have been lifted or downgraded to evacuation warnings.

Fire staffing has been decreased as the Salt Fire winds down. There are currently less than 900 personnel assigned to the fire.

The Forest Service said, however, that due to extremely dry conditions, there remains a high chance of further fire starts in the Shasta-Trinity National Forest.

The latest damage assessment estimates that 24 homes and 14 outbuildings have been destroyed and four other outbuildings have been damaged.

The fire is believed to have been started by a faulty vehicle driving along northbound Interstate 5.

LAVA FIRE

The Lava Fire was sparked by lightning on June 24 in Shasta-Trinity National Forest, 3½ miles northeast of Weed in Siskiyou County, and has burned 25,409 acres. It is 75% contained. As of Sunday, overnight growth was less than 300 acres.

Up until Friday, the Lava Fire was the largest active fire in the state, before the Beckwourth Complex's Sugar Fire exploded in size.

Forest officials said that no significant growth has been observed in the Lava Fire for several days, and containment continues to inch forward. On Saturday, 5% more was added to the overall containment as crews worked on mopping up the blaze.

The most active area of the fire is on its north side of Mount Shasta, where timber is still burning, but which is "largely inaccessible to ground resources."

The fire has proved destructive, however. The Forest Service estimates that 23 structures have been destroyed, including 14 homes, and one additional structure was damaged. Six firefighters have been hurt while fighting the blaze.

Cannabis farmers in the area, many of whom are Hmong, say their greenhouses have been burned by the fire. One Hmong man was shot to death by law enforcement on June 28 amid tensions between officials and the Hmong community.

TENNANT FIRE

The Tennant Fire started on June 28 in Klamath National Forest, 3 miles northwest of Bray in Siskiyou County, and has burned 10,580 acres. The fire is 95% contained.

Crews are working on isolating the fire and mopping up any remaining hot spots, but officials are still bracing for potential fire starts in the days ahead.

"With the upcoming heat wave combined with critically dry fuels, it is anticipated that there could be flare ups within the interior of the fire perimeter, but they should not pose a threat to the control line," the Forest Service said in a Friday update.

All evacuation orders have been downgraded to evacuation warnings, some of which remain in place in areas surrounding the fire.

The Tennant Fire destroyed one home, one commercial building and one outbuilding, although no injuries or deaths have been reported.

Earlier this week, a firenado stemming from the Tennant Fire was caught on camera swirling above the flames.

The cause of the fire is still under investigation.

<https://www.sacbee.com/news/california/fires/article252700663.html>