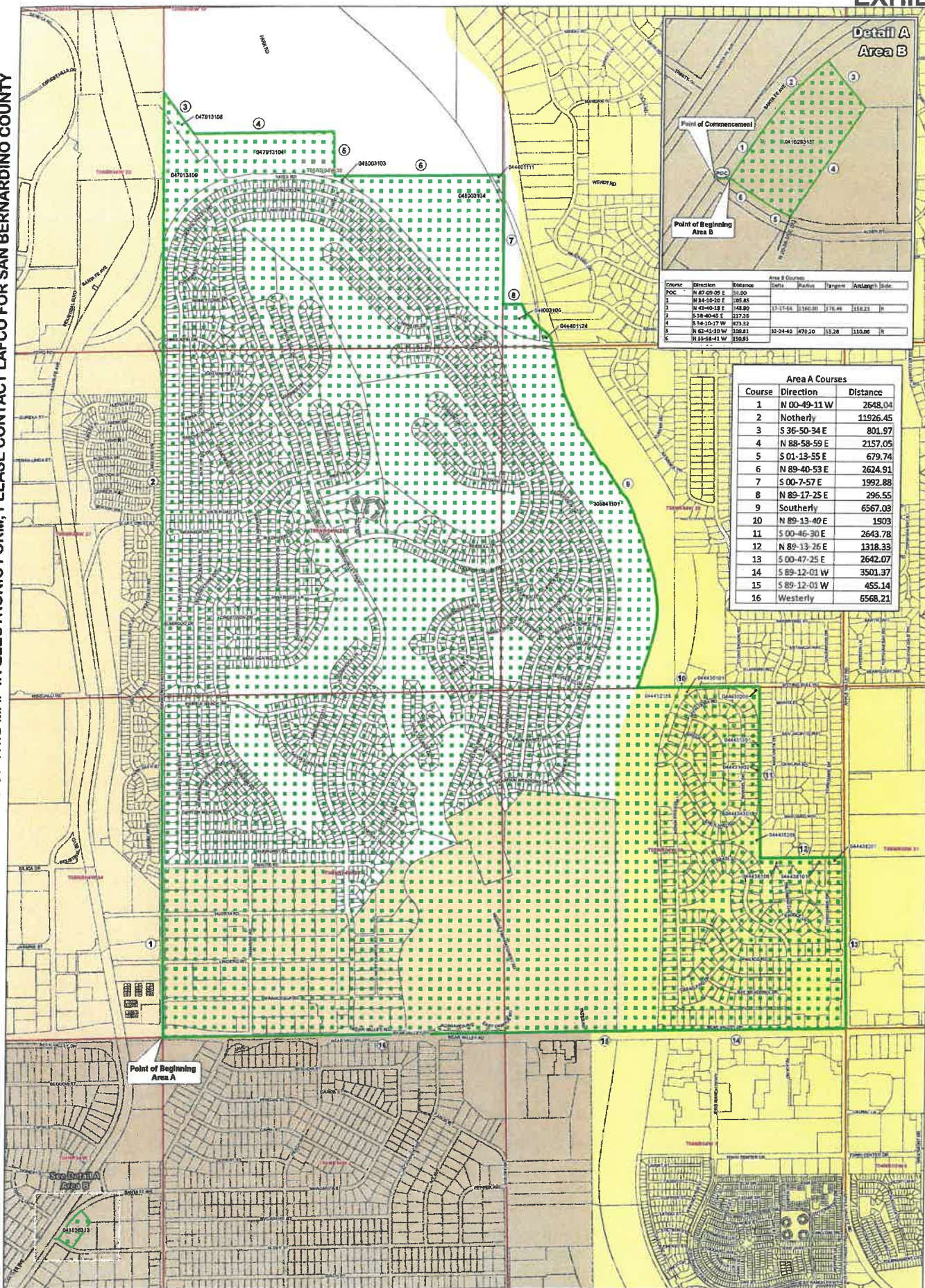


FOR QUESTIONS REGARDING THIS MAP OR TO OBTAIN A COPY OF THIS MAP IN ELECTRONIC FORM, PLEASE CONTACT LAFCO FOR SAN BERNARDINO COUNTY

FOR QUESTIONS REGARDING THIS MAP OR TO OBTAIN A COPY OF THIS MAP IN ELECTRONIC FORM, PLEASE CONTACT LAFCO FOR SAN BERNARDINO COUNTY



| Area B Courses | | | | | | |
|----------------|--------------|----------|-------|---------|------|-------|
| Course | Direction | Distance | Notes | Remarks | Page | Scale |
| POC | N 87-09-09 E | 111.00 | | | | |
| 1 | N 34-20-20 E | 185.85 | | | | |
| 2 | N 42-40-28 E | 148.90 | | | | |
| 3 | S 34-40-43 E | 217.38 | | | | |
| 4 | S 34-10-17 W | 473.32 | | | | |
| 5 | N 62-45-39 W | 108.81 | | | | |
| 6 | N 42-59-41 W | 158.93 | | | | |

| Area A Courses | | |
|----------------|--------------|----------|
| Course | Direction | Distance |
| 1 | N 00-49-11 W | 2648.04 |
| 2 | Notherly | 11926.45 |
| 3 | S 36-50-34 E | 801.97 |
| 4 | N 88-58-59 E | 2157.05 |
| 5 | S 01-13-55 E | 679.74 |
| 6 | N 89-40-53 E | 2624.51 |
| 7 | S 00-7-57 E | 1992.88 |
| 8 | N 89-17-25 E | 296.55 |
| 9 | Southerly | 6567.08 |
| 10 | N 89-13-40 E | 1903 |
| 11 | S 00-46-30 E | 2643.78 |
| 12 | N 89-13-26 E | 1318.33 |
| 13 | S 00-47-25 E | 2642.07 |
| 14 | S 89-12-01 W | 3501.37 |
| 15 | S 89-12-01 W | 455.14 |
| 16 | Westerly | 6568.21 |

- Legend**
- Sections
 - Parcels
 - Spring Valley Lake CSD Formation
 - 12 Course Number
 - City of Hesperia
 - Town of Apple Valley
 - City of Victorville
 - D12345678 APN Number

LAFCO 3233A - Reorganization to include Dissolution of County Service Area 64 and Formation of the Spring Valley Lake Community Services District together with Formation of Zone A for Solid Waste and Street Sweeping.

Formation of the Spring Valley Lake Community Services District

0 0.25 0.5 1 Miles

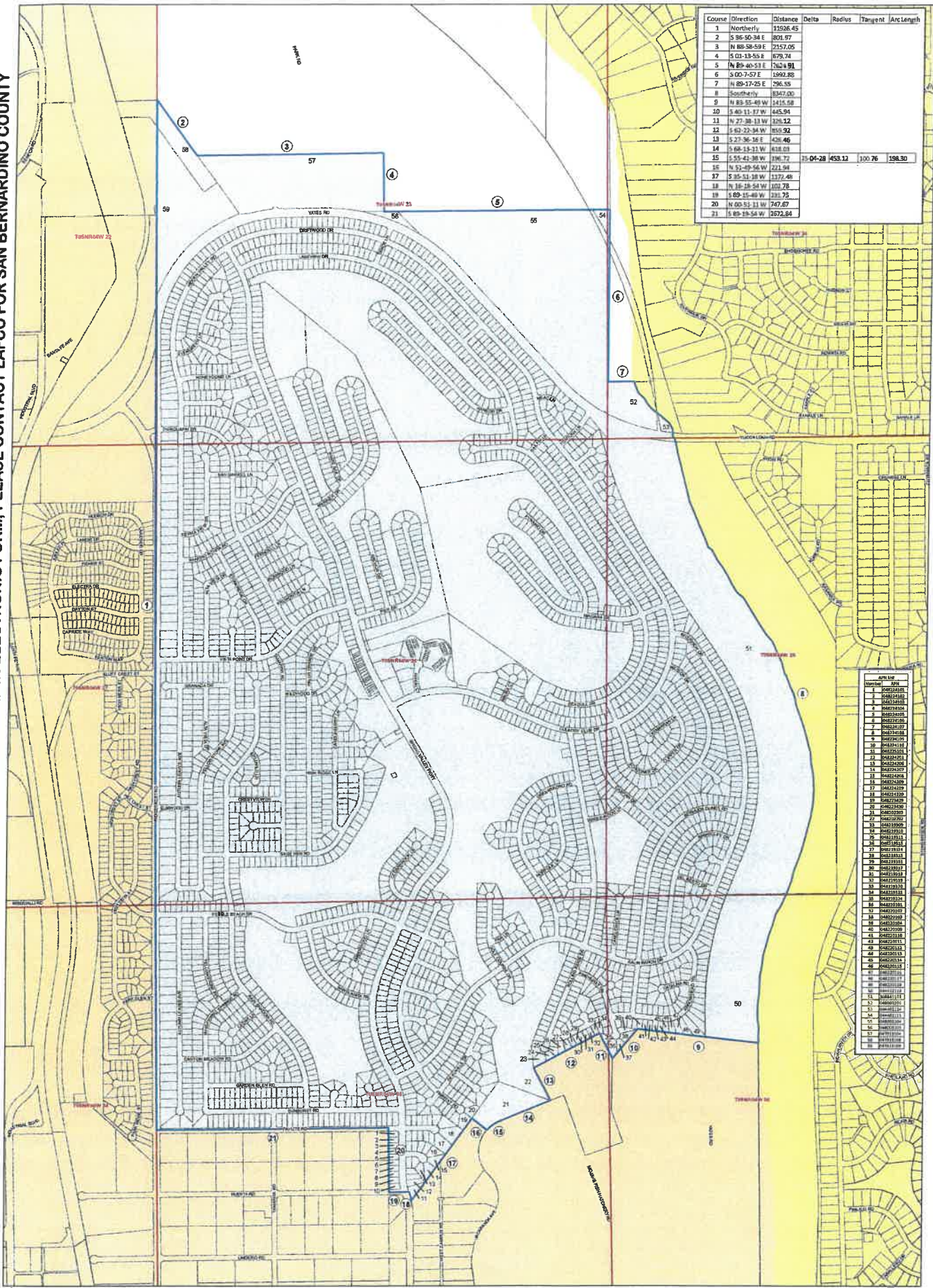
Affected Agency's
 City of Victorville
 Town of Apple Valley
 County Service Area 64

Ryan S. Munsicker
 Ryan S. Munsicker
 This map has been prepared by me or under my direction

FOR QUESTIONS REGARDING THIS MAP OR TO OBTAIN A COPY OF THIS MAP IN ELECTRONIC FORM, PLEASE CONTACT LAFCO FOR SAN BERNARDINO COUNTY

FOR QUESTIONS REGARDING THIS MAP OR TO OBTAIN A COPY OF THIS MAP IN ELECTRONIC FORM, PLEASE CONTACT LAFCO FOR SAN BERNARDINO COUNTY

| Course | Direction | Distance | Delta | Radius | Tangent | Arc Length |
|--------|--------------|----------|----------|--------|---------|------------|
| 1 | Northerly | 13526.45 | | | | |
| 2 | S 96-50-34 E | 2021.57 | | | | |
| 3 | N 89-58-59 E | 2157.05 | | | | |
| 4 | S 03-13-55 E | 679.74 | | | | |
| 5 | N 89-40-51 E | 7264.91 | | | | |
| 6 | S 00-7-57 E | 15992.88 | | | | |
| 7 | N 89-17-25 E | 296.55 | | | | |
| 8 | Southerly | 13547.00 | | | | |
| 9 | N 83-55-49 W | 1414.58 | | | | |
| 10 | S 40-11-17 W | 445.94 | | | | |
| 11 | N 27-38-13 W | 1206.32 | | | | |
| 12 | S 62-22-34 W | 810.92 | | | | |
| 13 | S 27-36-19 E | 426.46 | | | | |
| 14 | S 68-13-11 W | 818.83 | | | | |
| 15 | S 55-41-38 W | 136.72 | 25-04-28 | 453.12 | 100.76 | 198.30 |
| 16 | N 52-49-56 W | 221.94 | | | | |
| 17 | S 85-14-18 W | 1372.48 | | | | |
| 18 | N 18-18-54 W | 103.78 | | | | |
| 19 | S 89-15-49 W | 231.75 | | | | |
| 20 | N 00-51-11 W | 747.67 | | | | |
| 21 | S 89-19-54 W | 2532.84 | | | | |



| APN List | APN |
|----------|-----------|
| 1 | 046823180 |
| 2 | 046823180 |
| 3 | 046823180 |
| 4 | 046823180 |
| 5 | 046823180 |
| 6 | 046823180 |
| 7 | 046823180 |
| 8 | 046823180 |
| 9 | 046823180 |
| 10 | 046823180 |
| 11 | 046823180 |
| 12 | 046823180 |
| 13 | 046823180 |
| 14 | 046823180 |
| 15 | 046823180 |
| 16 | 046823180 |
| 17 | 046823180 |
| 18 | 046823180 |
| 19 | 046823180 |
| 20 | 046823180 |
| 21 | 046823180 |
| 22 | 046823180 |
| 23 | 046823180 |
| 24 | 046823180 |
| 25 | 046823180 |
| 26 | 046823180 |
| 27 | 046823180 |
| 28 | 046823180 |
| 29 | 046823180 |
| 30 | 046823180 |
| 31 | 046823180 |
| 32 | 046823180 |
| 33 | 046823180 |
| 34 | 046823180 |
| 35 | 046823180 |
| 36 | 046823180 |
| 37 | 046823180 |
| 38 | 046823180 |
| 39 | 046823180 |
| 40 | 046823180 |
| 41 | 046823180 |
| 42 | 046823180 |
| 43 | 046823180 |
| 44 | 046823180 |
| 45 | 046823180 |
| 46 | 046823180 |
| 47 | 046823180 |
| 48 | 046823180 |
| 49 | 046823180 |
| 50 | 046823180 |
| 51 | 046823180 |
| 52 | 046823180 |
| 53 | 046823180 |
| 54 | 046823180 |
| 55 | 046823180 |
| 56 | 046823180 |
| 57 | 046823180 |
| 58 | 046823180 |
| 59 | 046823180 |
| 60 | 046823180 |
| 61 | 046823180 |
| 62 | 046823180 |
| 63 | 046823180 |
| 64 | 046823180 |
| 65 | 046823180 |
| 66 | 046823180 |
| 67 | 046823180 |
| 68 | 046823180 |
| 69 | 046823180 |
| 70 | 046823180 |
| 71 | 046823180 |
| 72 | 046823180 |
| 73 | 046823180 |
| 74 | 046823180 |
| 75 | 046823180 |
| 76 | 046823180 |
| 77 | 046823180 |
| 78 | 046823180 |
| 79 | 046823180 |
| 80 | 046823180 |
| 81 | 046823180 |
| 82 | 046823180 |
| 83 | 046823180 |
| 84 | 046823180 |
| 85 | 046823180 |
| 86 | 046823180 |
| 87 | 046823180 |
| 88 | 046823180 |
| 89 | 046823180 |
| 90 | 046823180 |
| 91 | 046823180 |
| 92 | 046823180 |
| 93 | 046823180 |
| 94 | 046823180 |
| 95 | 046823180 |
| 96 | 046823180 |
| 97 | 046823180 |
| 98 | 046823180 |
| 99 | 046823180 |
| 100 | 046823180 |

Legend

- Sections
- Parcels
- Spring Valley Lake CSD Zone A
- Course Number
- City of Hesperia
- Town of Apple Valley
- City of Victorville
- APN List

LAFCO 3233A - Reorganization to include Dissolution of County Service Area 64 and Formation of the Spring Valley Lake Community Services District together with Formation of Zone A for Solid Waste and Street Sweeping
Formation of Spring Valley Lake CSD Zone A

0 0.125 0.25 0.5 Miles

Affected Agency's
 City of Victorville
 Town of Apple Valley
 County Service Area 64

02/22/20
 Ryan S. Hunsicker
 This map has been prepared by me or under my direction