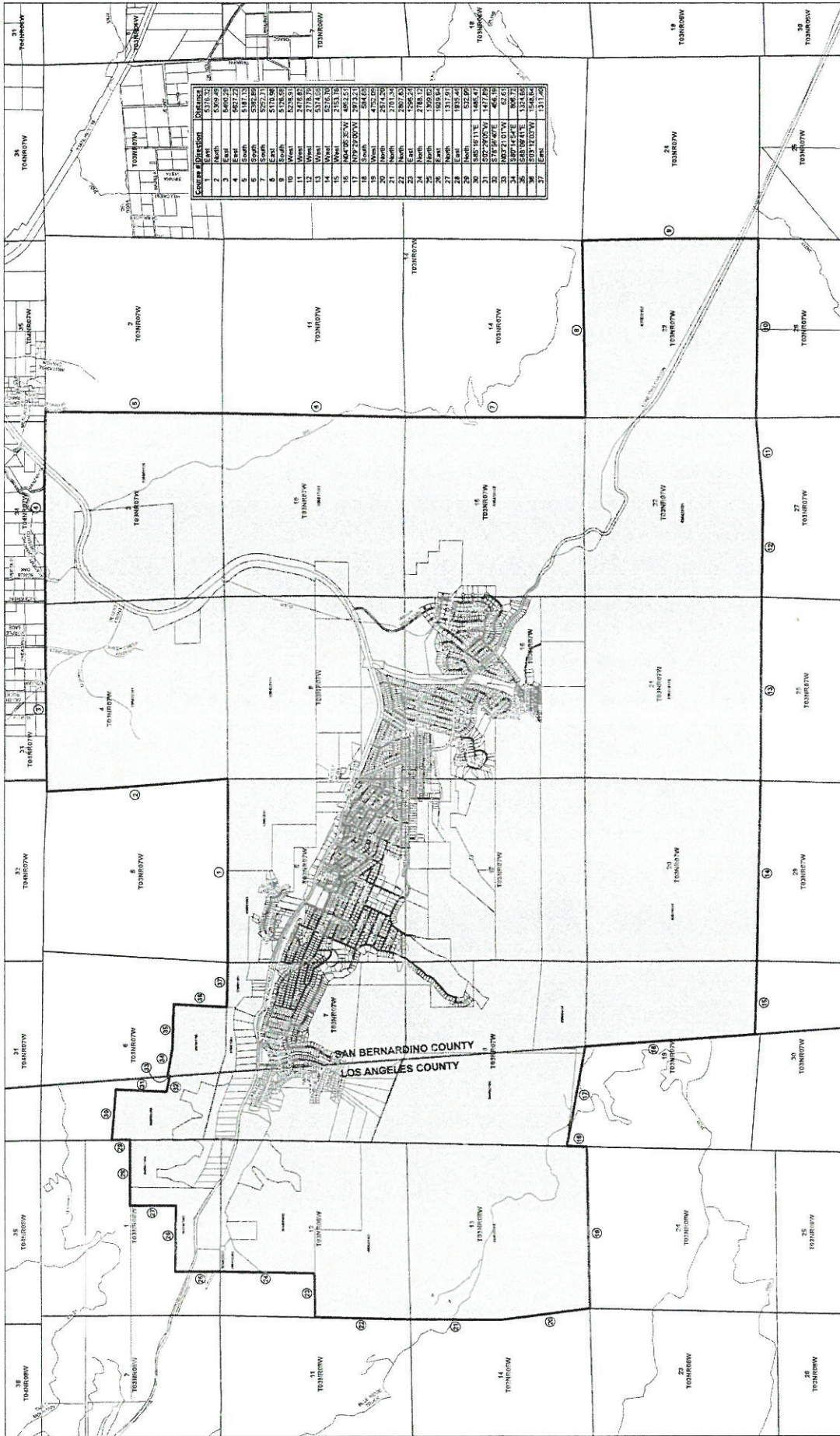


FOR QUESTIONS REGARDING THIS MAP OR TO OBTAIN A COPY OF THIS MAP IN ELECTRONIC FORM, PLEASE CONTACT LAFCO FOR SAN BERNARDINO COUNTY



Section	Direction	Area (Acres)
1	North	5,218.52
2	North	5,209.46
3	East	6,600.29
4	East	5,181.15
5	South	5,181.15
6	South	5,202.06
7	West	5,170.21
8	West	5,170.21
9	West	5,170.21
10	West	5,170.21
11	West	5,170.21
12	West	5,170.21
13	West	5,170.21
14	West	5,170.21
15	West	5,170.21
16	West	5,170.21
17	West	5,170.21
18	West	5,170.21
19	West	5,170.21
20	West	5,170.21
21	West	5,170.21
22	West	5,170.21
23	West	5,170.21
24	West	5,170.21
25	West	5,170.21
26	West	5,170.21
27	West	5,170.21
28	West	5,170.21
29	West	5,170.21
30	West	5,170.21
31	West	5,170.21
32	West	5,170.21
33	West	5,170.21
34	West	5,170.21
35	West	5,170.21
36	West	5,170.21
37	West	5,170.21

THIS MAP WAS PREPARED BY ME OR UNDER MY DIRECTION

James L. Stear
 San Bernardino County Surveyor
 PLS 5902
 Date: 06/24/2016
 Job Number: 06117016, Revised June 23, 2016



LAFCO 3202
 Reorganization to Include Formation of the Wrightwood Community Service District and Dissolution of County Service Area 56
Trust Portions of Townships 2 North, 3 North, 4 North, 5 North, 6 North, 7 North, 8 North, 9 North, 10 North, 11 North, 12 North, 13 North, 14 North, 15 North, 16 North, 17 North, 18 North, 19 North, 20 North, 21 North, 22 North, 23 North, 24 North, 25 North, 26 North, 27 North, 28 North, 29 North, 30 North, 31 North, 32 North, 33 North, 34 North, 35 North, 36 North, 37 North



- Community Service District Area (738.51 Acres)
- More of LAFCO
- Fence
- Section Line
- Addressed Parcel Number
- Circuit Number
- County Boundary



1 inch = 1,200 feet



FOR QUESTIONS REGARDING THIS MAP OR TO OBTAIN A COPY OF THIS MAP IN ELECTRONIC FORM, PLEASE CONTACT LAFCO FOR SAN BERNARDINO COUNTY