

RESOLUTION NO. 2022-186

A RESOLUTION OF THE BOARD OF SUPERVISORS OF SAN BERNARDINO COUNTY, STATE OF CALIFORNIA, REGARDING THE FIRST CYCLE HAZARDS ELEMENT AMENDMENT 2022

On Tuesday, September 27, 2022, on motion by Supervisor Rowe, duly seconded by Supervisor Baca, Jr., and carried, the following resolution is adopted by the Board of Supervisors of San Bernardino County, State of California.

WHEREAS, the Countywide Plan, Policy Plan serves as the general plan for San Bernardino County; and

WHEREAS, Section 65358 of the Government Code requires that any mandatory element of a general plan shall be amended no more than four times during any calendar year; and

WHEREAS, the Policy Plan amendments set forth within this resolution constitute the first amendment to the Policy Plan Hazards Element during the 2022 calendar year; and

WHEREAS, pursuant to Policy HZ-3.20 and in accordance with the update to the Environmental Justice and Legacy Communities Background Report adopted concurrently with this resolution, the County has prepared an updated assessment of the boundaries, issues, policies, objectives, and implementation strategies regarding environmental justice focus areas (EJFAs) that require Policy Plan amendments to the text of the Hazards Element's tables and Policy Map HZ-10; and

WHEREAS, properly noticed public hearings have been held before the Planning Commission and the Board of Supervisors of San Bernardino County, State of California, pursuant to the Planning and Zoning Law (Government Code §§ 65000 *et seq.*) and the San Bernardino Development Code (San Bernardino County Code §§ 81.01.010 *et seq.*) for the Policy Plan amendments set forth within this resolution; and

WHEREAS, the Board of Supervisors has made the findings necessary to adopt the Policy Plan amendments set forth within this resolution.

NOW THEREFORE, BE IT RESOLVED, that the Board of Supervisors hereby amends the San Bernardino County Policy Plan Hazards Element as follows:

HAZARDS ELEMENT UPDATE**HAZARDS ELEMENT TEXT, HZ TABLES AND POLICY MAP HZ-10****SECTION 1.**

Tables HZ-1 through HZ-7 of the Policy Plan Hazards Element are repealed.

SECTION 2.

Tables HZ-1 through HZ-6 are added to the Policy Plan Hazards Element as set forth in Attachment "A" hereto, which is incorporated herein by reference.

SECTION 3.

The text for the introductory paragraph of the Hazards Element Tables section is amended in its entirety to read as follows:

The following tables provide more detailed information on the census tracts and community areas considered to be environmental justice focus areas (EJFAs). Table HZ-1 lists the percentile scores and major contributing factors for each EJFA. Table HZ-2 through HZ-5 provide an expanded discussion of the contributing issues present in each EJFA by topical area, while Table HZ-6 lists high-level objectives for each topic.

SECTION 4.

Policy Map HZ-10 of the Policy Plan is amended as shown on Figure 1 of the attached map to provide updated boundaries of the EJFAs, as identified in Tables HZ-1 through HZ-6 of Section 2 of this resolution.

FINDINGS FOR THE POLICY PLAN AMENDMENTS:

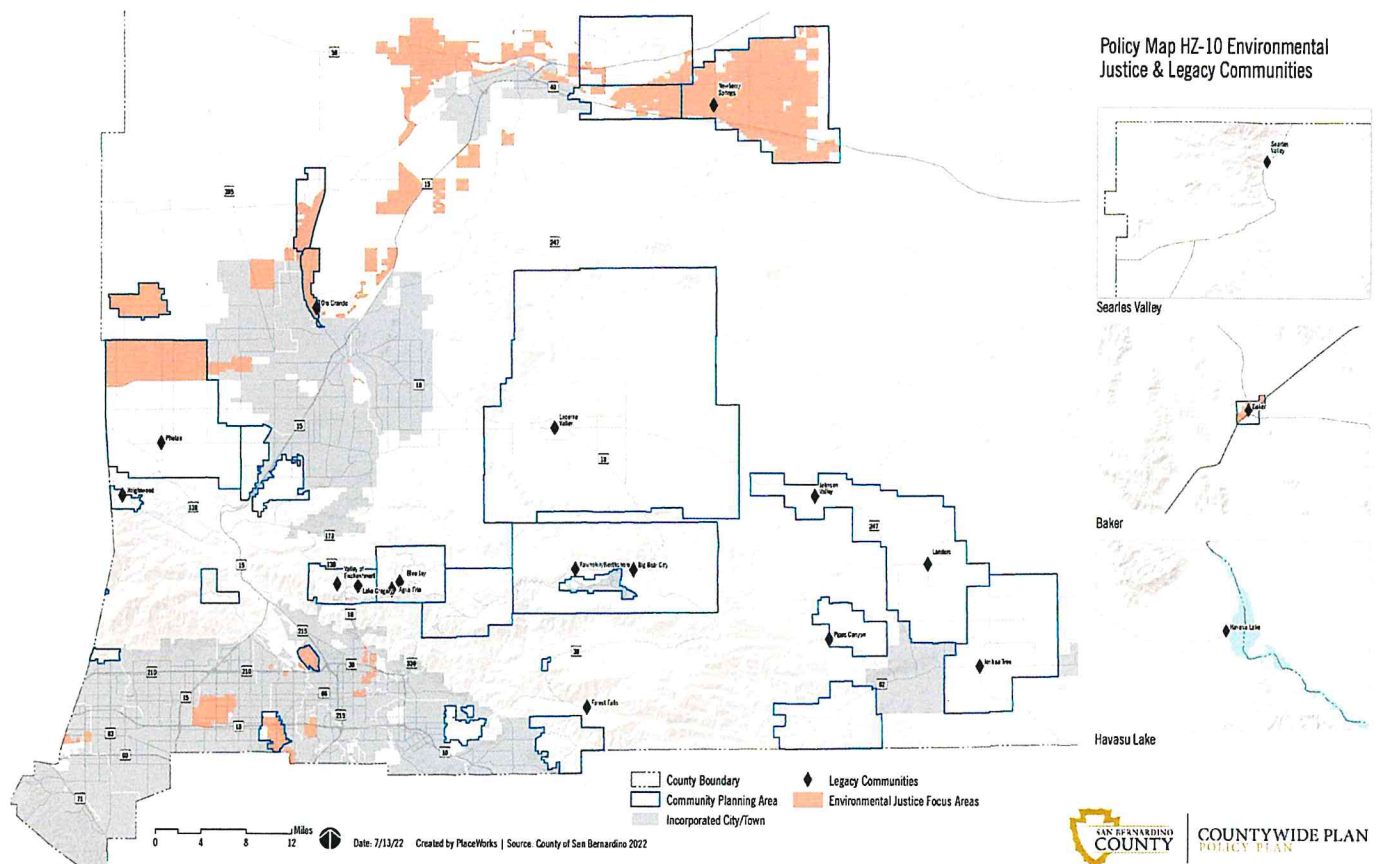
1. The Hazards Element amendments are internally consistent with all other provisions of the Policy Plan and are directed explicitly by Policy HZ-3.20, which requires the County to update the assessment of the boundaries, issues, policies, objectives, and implementation strategies regarding EJFAs subsequent to updates in CalEnviroScreen, equivalent state tools, or as the County deems necessary.
2. The Hazards Element amendments will not be detrimental to the public interest, health, safety, convenience, or welfare of the County because the amendments were prepared to implement County Policy and maintain up-to-date information to guide future decisions and investments that promote environmental justice. Therefore, the proposed updates will have a beneficial effect on the public interest, health, safety, convenience, and welfare.
3. The County has evaluated the potential environmental impacts of the Hazards Element amendments in an addendum to the Countywide Plan Program Environmental Impact Report (PEIR) (SCH No. 2017101033). The County, acting as the lead agency, has determined that none of the conditions triggering the preparation of a subsequent or supplemental PEIR, as set forth in Cal. Code Regs, tit. 14, Section 15162, apply to the amendments and that the addendum is appropriate and has been prepared in compliance with the California Environmental Quality Act. Prior to initiating and adopting the addendum, the County has considered the addendum together with the previously certified PEIR and the adoption of the addendum reflects the independent judgment and analysis of the County.

HAZARDS ELEMENT UPDATE

HAZARDS ELEMENT TEXT, HZ TABLES AND POLICY MAP HZ-10

Figure 1

Policy Plan, Policy Map HZ-10 Environmental Justice & Legacy Communities



SECTION 5.

The Policy Plan amendments set forth within this resolution shall become effective 30 days after the adoption of this resolution. This resolution was passed and adopted by the Board of Supervisors of San Bernardino County, State of California, by the following vote:

AYES: SUPERVISORS: Col. Paul Cook (Ret.), Janice Rutherford, Dawn Rowe, Curt Hagman,
Joe Baca, Jr.

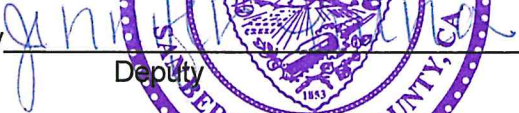
NOES: SUPERVISORS: None

ABSENT: SUPERVISORS: None

STATE OF CALIFORNIA)
) ss.
SAN BERNARDINO COUNTY)

I, **LYNNA MONELL**, Clerk of the Board of Supervisors of San Bernardino County, State of California, hereby certify the foregoing to be a full, true and correct copy of the record of the action taken by the Board of Supervisors, by vote of the members present, as the same appears in the Official Minutes of said Board at its meeting of September 27, 2022.

LYNNA MONELL
Clerk of the Board of Supervisors

By 
Deputy



Approved as to Legal Form
TOM BUNTON
County Counsel

By 
JASON M. SEARLES
Supervising Deputy County Counsel

Date: 9/27/22

Attachment “A”

Policy Plan Hazards Element Tables

Table HZ-1. CalEnviroScreen Scores for Environmental Justice Focus Areas

CES Rankings		Quartile 1 = Good		Quartile 2 = Moderate		Quartile 3 = Poor		Quartile 4 = Challenged	
Variables/Factors in the CES model:									
POLLUTION EXPOSURE		ENVIRONMENTAL EFFECTS			SENSITIVE POPULATION			SOCIOECONOMIC FACTORS	
AQ = Air Quality		CS = Toxic Cleanup Sites			AS = Asthma			LI = Linguistic Isolation	
PEST = Pesticides		GW: Groundwater Threats			LB = Low Birth Weight			POV = Poverty	
DW = Drinking Water		HZ = Hazardous Waste			CVD = Heart Disease			UE = Unemployment	
TR = Toxic Releases		IW = Impaired Waters						HB = Housing Burden	
TD = Traffic Density		SW = Solid Waste Sites/Facilities						ED = Educational Attainment	
LD = Lead from Housing									
Census Tract	Low Income	Percentile and Quartile Rank			Scores in the Upper Quartile				
		Composite Score	Pollution Score	Population Score	Pollution Factors	Population Factors			
El Mirage Valley									
6071011700 Oro Grande	Yes	81	72	79	AQ, HZ, SW	LB, POV, UE			
6071009117 El Mirage	Yes	89	65	95	AQ, CS, HZ	AS, CVD,ED, POV, UE, HB			
North High Desert									
6071011900 Hinkley	No	78	59	83	AQ, CS, GW, HW	AS, CVD, ED, UE			
6071010300 Daggett/ Newberry Springs/Baker	Yes	75	62	77	AQ, DW, CS, GW, HZ, SW	LB, POV, UE			
Bloomington-Colton									
6071003606	Yes	77	80	66	AQ, TD, DW	AS, CVD, ED, LI, POV			
6071004001	Yes	94	88	89	AQ, TD, DW	AS, CVD, ED, LI, POV, UE			
6071004003	Yes	95	91	89	AQ, DW, LD, GW, HZ, SW	AS, LB, CVD, ED			
6071004004	Yes	96	99	76	AQ, TD, DW, CS, GW, HZ, SW	AS, LB, CVD, ED			
6071003302	Yes	91	95	75	AQ, TR, TD, DW, SW	ED, LI, POV, UE			
6071006601	Yes	78	83	65	AQ, TD, LD	AS, CVD			
Muscoy-San Bernardino									
6071004104	Yes	95	77	99	AQ, LD, CS	AS, LB, CVD, ED, LI, POV, UE, HB			
6071004101	Yes	86	63	93	AQ, LD, CS	AS, LB, CVD, ED, POV, UE			
6071004103	Yes	92	77	94	AQ, LD, CS	AS, CVD, ED, POV, UE, HB			
Valley Unincorporated Islands: Chino-Montclair									
6071000303	Yes	84	91	67	AQ, DW, CS, HZ, SW	ED, LI, POV			

Table HZ-1. CalEnviroScreen Scores for Environmental Justice Focus Areas

CES Rankings		Quartile 1 = Good		Quartile 2 = Moderate		Quartile 3 = Poor		Quartile 4 = Challenged	
Variables/Factors in the CES model:									
POLLUTION EXPOSURE		ENVIRONMENTAL EFFECTS			SENSITIVE POPULATION		SOCIOECONOMIC FACTORS		
AQ = Air Quality		CS = Toxic Cleanup Sites			AS = Asthma		LI = Linguistic Isolation		
PEST = Pesticides		GW: Groundwater Threats			LB = Low Birth Weight		POV = Poverty		
DW = Drinking Water		HZ = Hazardous Waste			CVD = Heart Disease		UE = Unemployment		
TR = Toxic Releases		IW = Impaired Waters					HB = Housing Burden		
TD = Traffic Density		SW = Solid Waste Sites/Facilities					ED = Educational Attainment		
LD = Lead from Housing									
Census Tract	Low Income	Percentile and Quartile Rank			Scores in the Upper Quartile				
		Composite Score	Pollution Score	Population Score	Pollution Factors	Population Factors			
6071000304	No	84	78	79	AQ, DW, CS	LB, ED, LI			
Valley Unincorporated Islands: Western Fontana									
6071002402	Yes	81	66	83	AQ, HZ	CVD, ED, LI, POV			
6071002204	Yes	93	96	77	AQ, TR, CS, HZ, SW	CVD, ED, UE			
6071002501	No	91	92	79	AQ, TR, TD, HZ, SW	CVD, ED, POV			
6071002401	Yes	84	79	79	AQ, CS, HZ	CVD, ED, LI, POV			
Valley Unincorporated Islands: San Bernardino									
6071006302	Yes	83	56	93	AQ, DW, LD	AS, CVD, ED, POV, UE, HB			
6071006500	Yes	87	66	93	AQ, LD, CS	CVD, ED, POV, UE, HB			
6071006100	Yes	78	48	91	AQ, DW, LD	AS, LB, CVD, HB			

Table HZ-2. EJ Assessment in the El Mirage Valley

Topic	Environmental Conditions
Reduction of pollution exposure and improving air quality	Pollution Exposure El Mirage has hazardous waste cleanup sites from past military and aerospace uses, groundwater threats, and a remediated/closed hazardous waste storage facility.
	Air Quality El Mirage and Oro Grande are in the Mojave Air Quality Management District. Like much of southern California, the region has air quality issues. The region does not meet federal standards for ozone and respirable particulate matter (PM10) or state standards for ozone and respirable and fine PM2.5.
Promoting public facilities (including infrastructure and	Water and Sewer El Mirage has limited water infrastructure and relies on private wells that tap into the aquifer. El Mirage is also reliant on septic tanks and leach fields, with

Table HZ-2. EJ Assessment in the El Mirage Valley

Topic	Environmental Conditions
community services)	no ability to support the installation of a regional wastewater treatment plant due to the extremely low levels of population and density. Groundwater has been known to be vulnerable to contaminants. Oro Grande has sufficient water, but lacks adequate storage, is a high priority basin, and is susceptible to contaminants.
	Fire and Sheriff County Fire Station 311 serves El Mirage and responds in an average of 19 minutes. Station 322 serves Oro Grande at an average response time of 8 minutes due primarily to the extremely low levels of population and density. Police service is provided by the County Sheriff in Victorville and response time is not known.
Promoting health care Infrastructure	Health Needs Health needs for El Mirage and Oro Grande are significant—including a 39% adult obesity (13 points above the state average), 30% of working age adults in fair or poor health (50% higher than state averages), 14% diabetes rate (50% above the state average), and higher asthma rates among adults. Heart disease is also a significant concern in the area.
	Health Care Infrastructure Both El Mirage and Oro Grande are designated a HPSA for mental health and primary care services and is a medically underserved area. Both areas have limited medical infrastructure, and residents must travel some distance to access facilities in other communities
Promoting food access	Food Security The poverty rate in El Mirage and Oro Grande is 30%, which is twice the state average. As a result, food insecurity is similarly high, affecting 16% of low income households, twice the state average. In El Mirage and Oro Grande schools, over 70% of children are eligible for free or reduced-price meals.
	Food Access El Mirage has limited grocery outlets, located in a cluster near SR-395 in Adelanto. There are no WIC (Women, Infants, and Children) vendors and only one Cal-Fresh-certified vendor in El Mirage. Due to the general lack of access to nearby stores, El Mirage is designated a food desert. Oro Grande also has limited food options, but is not considered a food desert due to its access to stores in Victorville.
Promoting safe and sanitary housing	Housing As part of the consolidated plan process, residents indicated a need to promote safe and sanitary housing. Although housing is relatively affordable in El Mirage and Oro Grande compared to other areas, concerns remain. Residents mentioned that abandoned homes should be demolished or rehabbed; code enforcement is understaffed; more is needed.

Table HZ-2. EJ Assessment in the El Mirage Valley

Topic	Environmental Conditions
Promoting physical activity	Level of Physical Activity Among youth ages 5 to 17, 26% participated in at least of one hour of physical exercise regularly versus 24% in the county and 21% in the state. For adults, the percentages of adults who walked more than 150 minutes per week was lower in the area versus the county and state averages.
	Opportunities for Physical Activity Recreational outlets include trails and outdoor sports, including opportunities in state and federal parks. The unincorporated areas in the community plan areas have few developed parks. Roads have limited pedestrian and bicycling facilities. This is not uncommon for desert roads.
Civil Engagement	Community Participation With daytime Planning Commission and Board of Supervisors meetings and a conventional notification process, it can be difficult for residents in this area to learn about and provide input on proposed development in a timely manner that substantively and effectively impacts the decision making process. Additionally, this area is far from public meeting sites, most households do not have good internet access, and approximately 11 percent of households do not speak English well.

Table HZ-3. EJ Assessment in the North High Desert

Topic	Environmental Conditions
Reduction of pollution exposure and improving air quality	Pollution Exposure The area's primary exposure to pollution is groundwater threats, hazardous wastes, and solid wastes. It should be noted, however, that this area extends 200 square miles to the Nevada border. Many of these pollutant sources are in unpopulated areas, far from Daggett, Newberry Springs, and Yermo.
	Air Quality This area is in the Mojave Air Quality Management District. Although the area has very high levels of ozone, there are few other appreciable air pollutants, except for a small area around the Barstow BNSF railyard, which has high levels of diesel particulate matter.
Promoting public facilities (including infrastructure and community services)	Water and Sewer LAFCO identified Daggett as a hotspot for insufficient water supply, water quality concerns, deficient infrastructure, and financial concerns. Unincorporated areas rely on individual septic systems. Drinking water is known to be at risk of contamination from nitrate, lead, and radioactive elements.
	Fire and Sheriff

Table HZ-3. EJ Assessment in the North High Desert

Topic	Environmental Conditions
	County Sheriff's Barstow Station serves this area; response times are not available. County Fire provides fire protection services from stations #52, #53, #56, and #4. Response times vary—from 20 to 50 minutes depending on staffing for the paid-call firefighter station.
Promoting health care Infrastructure	Health Needs Health issues include a 28% obesity rate and 10% diabetes rate—all close to state averages. Despite more modest income levels compared to other parts of the county, the health conditions of residents are better than many other areas of the county.
	Health Care Infrastructure Currently, the area is designated an HPSA for primary care, mental health, and dental services and a medically underserved area/population. There is a significant need for all the major medical services; residents must now travel to Barstow for service.
Promoting food access	Food Security The poverty rate in the area for adults is high (21%), far above the state average, and 11% of low income households are food insecure. Food insecurity affects children in the area as well. Approximately 78% of children in Barstow Unified School District were eligible for free/reduced-price meals in 2016.
	Food Access Except for small markets, these areas lack a full-service grocery store, and residents must drive to Barstow. There are no WIC vendors or Cal-Fresh—certified vendor closer than Barstow. Due to limited access to grocery stores, the entire area is designated a food desert by the USDA.
Promoting safe and sanitary housing	Housing Limited information is available about safe and sanitary housing in the area. Generally, the housing stock has a high proportion of mobile home units on septic service. Given the construction type and age of structures, there is a significant need to rehabilitate aging housing and demolish abandoned or dilapidated homes. Code enforcement issues may be concentrated in certain areas as well.
Promoting physical activity	Level of Physical Activity State physical fitness tests show one-third of students need improvement in aerobic capacity. However, the percentage of youth (age 5–17) getting regular physical activity is greater (31%) than in California (21%). The level of physical activity (measured by walking) among adults is lower than state averages.
	Opportunities for Physical Activity Recreational outlets include trails, hiking, and outdoor sports. Outside of Barstow and schools, formal park facilities are limited to Newberry Springs Park. Roadways have no pedestrian and bicycling facilities or other amenities. However, residents can walk and bicycle on public streets because traffic is very light.

Table HZ-3. EJ Assessment in the North High Desert

Topic	Environmental Conditions
Civil Engagement	Community Participation With daytime Planning Commission and Board of Supervisors meetings and a conventional notification process, it can be difficult for residents in this area to learn about and provide input on proposed development in a timely manner that substantively and effectively impacts the decision making process. Many parts of this area are far from public meeting sites. Additionally, the Daggett, Newberry Springs, and Baker communities do not have good internet access and approximately 10 percent of households do not speak English well.

Table HZ-4. EJ Assessment in Bloomington and Muscoy

Topic	Environmental Conditions
Reduction of pollution exposure and improving air quality	Pollution Exposure Nearly all census tracts (11 of 13) has high levels of air pollution and drinking water contamination concerns. Other pollution exposure issues include traffic density, toxic releases from industry, hazardous waste and cleanup sites from military and industrial land uses.
	Air Quality This area is in the South Coast Air Quality Management District and as a nonattainment status for ozone and particulate matter. Pollutant concentrations are high for particulate matter, including diesel particulate matter due to trucking routes in and around both communities.
Promoting public facilities (including infrastructure and community services)	Water and Sewer Water and sewer challenges are significant. For Muscoy, water service is provided by the Muscoy Mutual Water Company, and septic tanks and leach fields are used for its wastewater needs. For Bloomington, several water districts provide potable water for the community. For sewer, Bloomington was also developed with reliance on septic tanks and leach field systems.
	Fire and Sheriff San Bernardino County Fire Station #75 serves Muscoy and response times are 4 to 6 minutes, which is generally with NFPA standards. Bloomington Fire Station #76 serves the community and response times are unknown but are assumed to be also within NFPA standards due to the size of the community. Both areas are served by County Sheriff and response times were not available.
Promoting health care Infrastructure	Health Needs Within this area, Muscoy has elevated levels of asthma and high levels of obesity (35%) versus statewide average of 26%, and emergency room admits for cardiovascular disease. For Bloomington, key health needs include diabetes, a 43% obesity rate, and high rate of emergency room admits for heart disease.
	Health Care Infrastructure Access to health-supporting land uses is mixed. While Bloomington is not defined as a HPSA, all areas south of I-10 are designated a medically underserved population/area. Muscoy is also not a HPSA, although utilization of existing clinics in the area is mixed.

Table HZ-4. EJ Assessment in Bloomington and Muscoy

Topic	Environmental Conditions
Promoting food access	Food Security The poverty rate in both Bloomington and Muscoy is high. Low income household food insecurity is high in Bloomington (13%) and Muscoy (10%) versus state averages (8%). County has designated both areas as an HPLA—high poverty low access food desert.
	Food Access Food access is generally poor. In Bloomington, the area south of I-10 is designated by the USDA as a food desert, but other areas north of the I-10 have adequate access. Muscoy is also considered a food desert. There is a high preponderance of fast food outlets, liquor markets, and convenience stores.
Promoting safe and sanitary housing	Housing Limited information is available about safe and sanitary housing in the area. No code enforcement data are available. However, residents reported issues with the need for demolition and/or rehabilitation of homes, illegal dumping, junk and trash, and vacant homes in certain locations.
Promoting physical activity	Level of Physical Activity Among youth ages 5 to 17, 20% in Bloomington and 24% in Muscoy participated in at least of one hour of physical exercise regularly versus 24% in the county and 21% in the state. The percentage of adults who walked more than 150 minutes per week was lower in the area versus the county and state averages.
	Opportunities for Physical Activity Recreational outlets include bicycling, walking, and active recreation at parks. Roadways generally have limited pedestrian and bicycling facilities. Safety concerns (traffic and trucking) along streets makes active transportation uses generally not optimal.
Civil Engagement	Community Participation Despite the area's proximity to the primary County Government Center, daytime Planning Commission and Board of Supervisors meetings and a conventional notification process can make it difficult for residents in such areas to learn about and provide input on proposed development in a timely manner that substantively and effectively impacts the decision making process. Additionally, approximately 13 to 23 percent of households in Bloomington, 15 percent of households in the Colton SOI, and 5 to 13 percent of households in selected portions of Muscoy do not speak English well.

Table HZ-5. EJ Assessment in Valley Unincorporated Islands

Topic	Environmental Conditions
Reduction of pollution exposure and improving air quality	<p>Pollution Exposure</p> <p>Pollution exposure is significant for valley unincorporated islands, particularly those located within or near to industrial land uses or transportation infrastructure. Locations and issues where the CES scores exceeds the 75th percentile are as follows:</p> <p>Chino-Montclair: drinking water and toxic releases</p> <p>Western Fontana: toxic releases</p> <p>San Bernardino: toxic releases, lead from housing, drinking water, and cleanup sites</p>
	<p>Air Quality</p> <p>The San Bernardino Valley is in the South Coast Air Quality Management District and is designated as a nonattainment status for ozone and particulate matter. Pollutant concentrations are high for particulate matter, including diesel particulate matter due to trucking routes in these communities. Of concern, west Fontana and Chino-Montclair areas are near industrial centers. Toxic releases from industrial uses exceed the 75th percentile in every census tract within these two communities. None of the other census tracts in unincorporated San Bernardino or the Mentone area score high in toxic releases from industries.</p>
Promoting public facilities (including infrastructure and community services)	<p>Water and Sewer</p> <p>None of the four valley unincorporated islands were noted by the San Bernardino LAFCO as a hotspot for providing water. Wastewater service capacity is being studied by LAFCO. Based on technical reports for the countywide plan, infrastructure in all the unincorporated islands is able to provide water and sanitation services to support projected residential and nonresidential growth over the foreseeable future. However, it should be noted that drinking water contamination levels exceeded the 75th percentile in the Chino-Montclair and San Bernardino, unincorporated islands.</p>
	<p>Fire and Sheriff</p> <p>Chino-Montclair: Montclair FD and Chino Valley FD provides service; response times are unknown</p> <p>Western Fontana: County Station #72 serves west Fontana; response times are unknown</p> <p>San Bernardino: County Fire provides services to these areas; response times are unknown</p> <p>County Sheriff provides law enforcement services for all areas; response times are unknown</p>

Table HZ-5. EJ Assessment in Valley Unincorporated Islands

Topic	Environmental Conditions
Promoting health care Infrastructure	<p>Health Needs</p> <p>Chino-Montclair: high levels of diabetes (13%), obesity (37%), and emergency room visits for heart disease</p> <p>Western Fontana: high levels of diabetes (13%), obesity (41%), and emergency room visits for heart disease</p> <p>San Bernardino: high levels of diabetes (12%), obesity (40%), and emergency room visits for heart disease</p> <p>Health Infrastructure</p> <p>While the desert regions are known for a lack of health care infrastructure, most areas in the valley are fairly well-served with health care professionals, with a few exceptions by area.</p> <p>Chino-Montclair: not designated as a HPSA</p> <p>Western Fontana: not designated as a HPSA</p> <p>San Bernardino: designated as a HPSA for medically underserved area /population only</p>
Promoting food access	<p>Food Security</p> <p>A significant portion of children in these areas are eligible for free or reduced meals at local schools. With respect to household food insecurity, rates vary by community.</p> <p>Chino-Montclair: food insecurity similar to state (8%) and county averages (9%)</p> <p>Western Fontana: a-high levels of food insecurity among low income households (15%)</p> <p>San Bernardino: moderate levels of food insecurity among low income households (11%)</p> <p>Food Access</p> <p>Food access according to the USDA is generally good, with a few exceptions.</p> <p>Chino-Montclair: small portion along Mission Boulevard is a food desert</p> <p>Western Fontana: southeast quadrant is a food desert</p> <p>San Bernardino: selected unincorporated census tracts are food deserts</p>
Promoting safe and sanitary housing	<p>Housing</p> <p>There is no source of data documenting the condition of safe and sanitary housing in unincorporated islands. Most cities and the County do not track the data nor is this information included in consolidated plans or other mandated reports for individual areas. However, visual inspection indicates a need for housing rehabilitation, demolition of dilapidated structures, code enforcement concerns, property maintenance, and debris and vehicle clearance. While not all unincorporated islands display these issues, many of the lower income census tract areas have one or more of the above conditions affecting neighborhood quality.</p>

Table HZ-5. EJ Assessment in Valley Unincorporated Islands

Topic	Environmental Conditions
Promoting physical activity	<p>Level of Physical Activity</p> <p>Levels of physical activity are similar for most valley communities as follows. Chino-Montclair: 22% of youth exercised regularly and 30% of adults walked at least 150 minutes per week Western Fontana: 21% of youth exercised regularly and 31% of adults walked at least 150 minutes per week San Bernardino: 24% of youth exercised regularly and 30% of adults walked at least 150 minutes per week</p> <p>Opportunities for Physical Activity</p> <p>As the Valley is urbanized, there are ample opportunities for bicycling, walking, and active recreation at parks. Roadways generally have limited pedestrian and bicycling facilities. However, safety concerns (traffic and trucking) along streets makes active transportation uses generally not optimal. Certain neighborhoods may also have elevated levels of crime and vagrancy that may discourage use of physical activity opportunities.</p>
Civil Engagement	<p>Community Participation</p> <p>Despite the area's proximity to the primary County Government Center, daytime Planning Commission and Board of Supervisors meetings and a conventional notification process can make it difficult for residents in such areas to learn about and provide input on proposed development in a timely manner that substantively and effectively impacts the decision making process. Additionally, approximately 17 percent of households in the Montclair SOI, 14 to 17 percent of households in the western Fontana SOI, and 7 to 20 percent of households in the City of San Bernardino SOI do not speak English well.</p>

Table HZ-6. Objectives for Unincorporated Environmental Justice Focus Areas

Topic	Objective
Reduction of pollution exposure and improving air quality	<ul style="list-style-type: none"> ▪ Contaminated soils. Remediation of hazardous waste sites and other contaminated sites. ▪ Water quality. Improved water quality and elimination of groundwater threats. ▪ Air quality. Reduction of ozone emissions and particulate matter to levels that meet federal and state standards.
Promoting public facilities (including infrastructure and community services)	<ul style="list-style-type: none"> ▪ Fire and Sheriff. Improved response times for public safety services. ▪ Public facilities. Improved access to existing and new public facilities that serve community needs for safety, health, and physical activity. ▪ Water and wastewater infrastructure. Adequate leach fields for onsite wastewater treatment systems and safe drinking water.
Promoting health care Infrastructure	<ul style="list-style-type: none"> ▪ Health needs and infrastructure. Reduction in the number of residents that lack access to health care professionals.
Promoting food access	<ul style="list-style-type: none"> ▪ Food access. Improved food security and access to fresh food.
Promoting safe and sanitary housing	<ul style="list-style-type: none"> ▪ Housing. Improved housing conditions for homeowners and renters.
Promoting physical activity	<ul style="list-style-type: none"> ▪ Joint use facilities. New joint use facilities that reduce barriers to exercise opportunities and increase access to physical fitness facilities. ▪ Opportunities for physical activity. New alternative transportation improvements in mobility focus areas.
Civil Engagement	<ul style="list-style-type: none"> ▪ Community participation. Increased awareness and understanding of potential projects and more opportunities for meaningful public participation that can affect the decision making process.