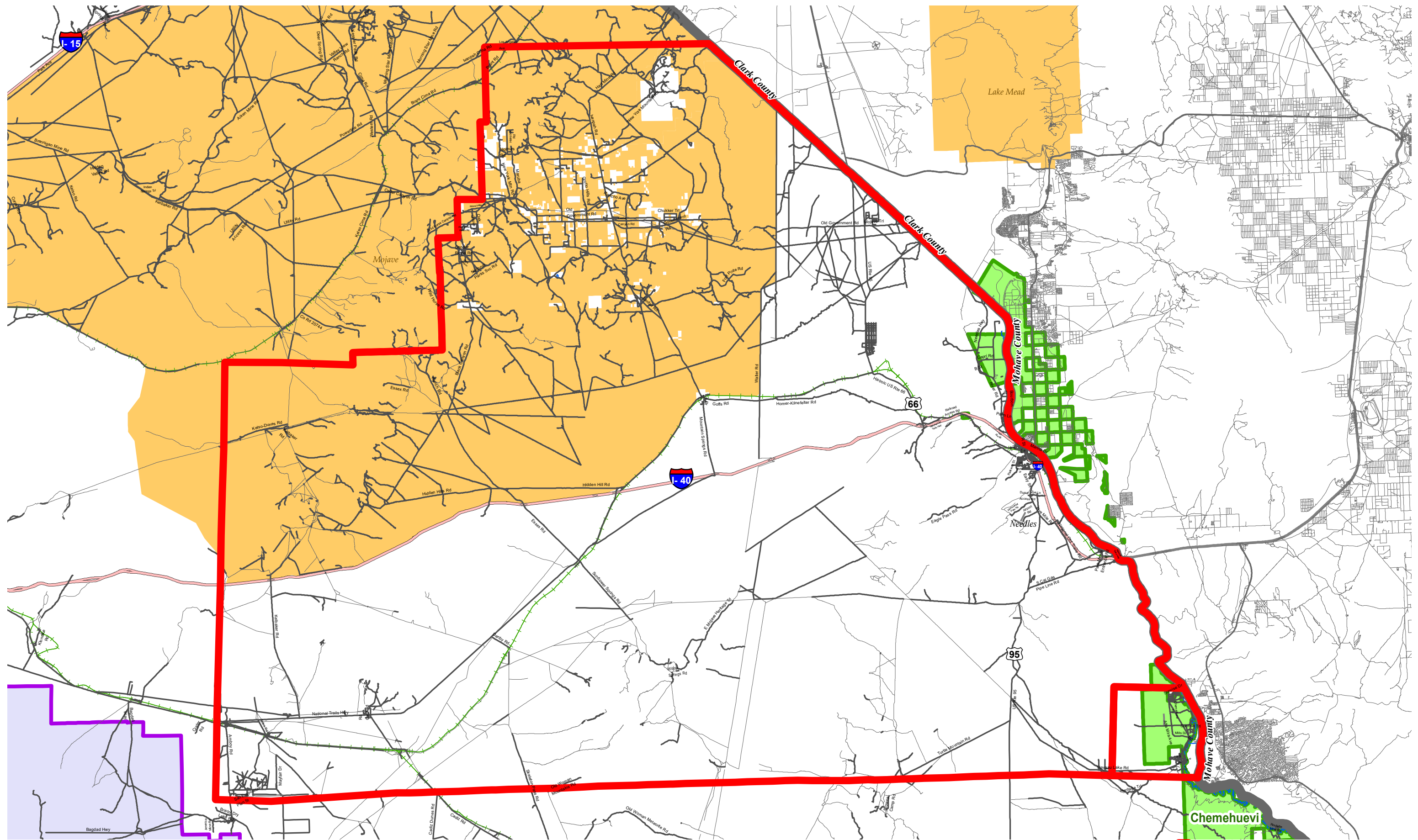


Document Name: B:\Maps\Created Maps\Size-Tabloid (17x11)\San Bernardino County\SB EOA\2017 EOA Maps\mxd\San_Bernardino_County_EOA_22.mxd Date Created: 2/7/2022 Created by: PVJ



SAN BERNARDINO COUNTY AMBULANCE EXCLUSIVE OPERATING AREA Area 22 - Needles Ambulance

- Ambulance EOA Boundary
- National Parks
- Tribal Boundaries
- Military Installations