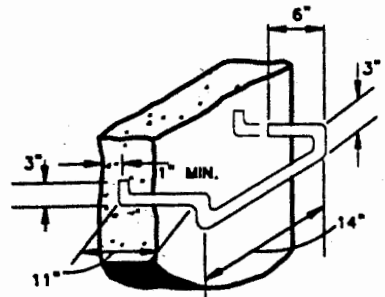
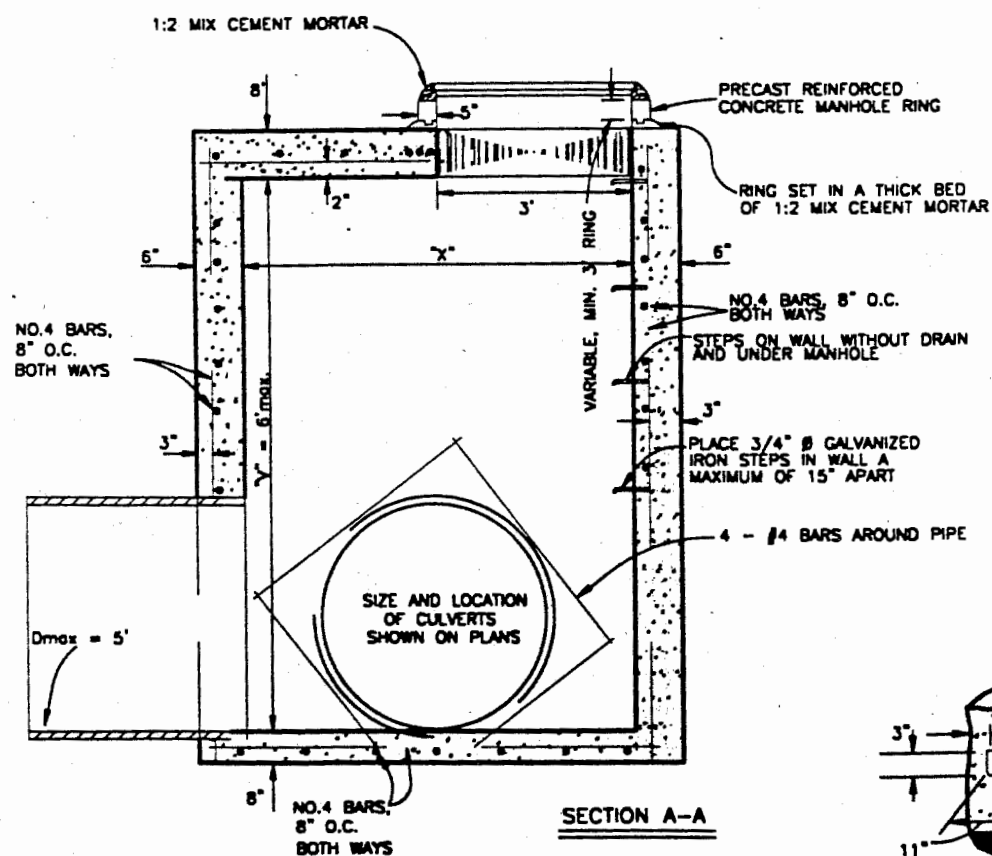


X: SHOWN ON PLANS.  
 Y: SHOWN ON PLANS.  
 Z: SHOWN ON PLANS.



- NOTES:
1. STORM DRAIN CLEANOUT SHALL BE CONSTRUCTED OF CLASS "A" CONCRETE.
  2. CLEARANCE FROM I.O. OF PIPE TO CLEANOUT WALL SHALL BE 4" MIN.
  3. APPROVED PRECAST CONCRETE MANHOLE SHAFT RINGS WILL BE ACCEPTED IN LIEU OF CAST-IN-PLACE SHAFT

SAN BERNARDINO COUNTY TRANS. DEPT.		STORM DRAIN CLEANOUT	208
KEN A. MILLER Director of Transportation			