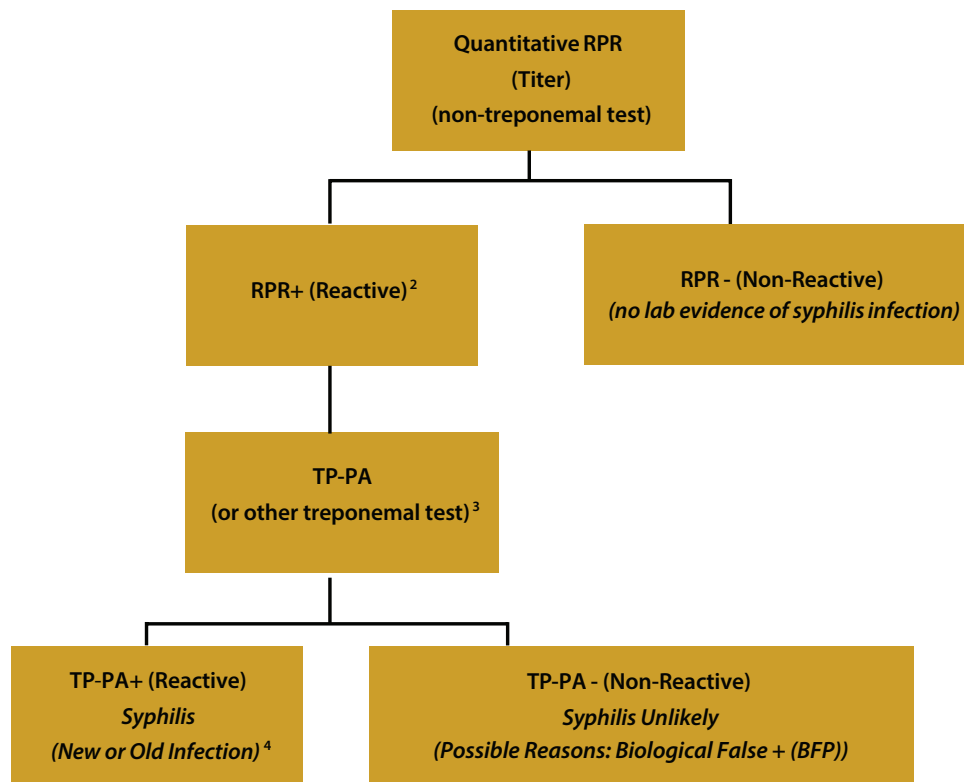


Traditional Syphilis SCREENING

Traditional Syphilis Serologic Screening Algorithm ¹



MMWR / February 11, 2011 / Vol. 60 / No. 5

1. SBC-DPH Recommended Algorithm. Algorithms used by laboratories may vary. Check with your laboratory provider.
2. When ordering an RPR=rapid plasma reagin (non-treponemal) and results are positive, order a REFLEX treponemal test such as TP-PA=Treponema pallidum particle agglutination assay. Both types of tests must be used to confirm a diagnosis.
3. Other treponemal tests include EIA=enzyme immunoassay; CIA=chemiluminescence immunoassay
4. Results alone cannot be used to determine (New vs. Old; Treated vs. Untreated; Early vs. False Positive) so it is important to gather complete medical information and patient history to assist with treatment and additional evaluation considerations.

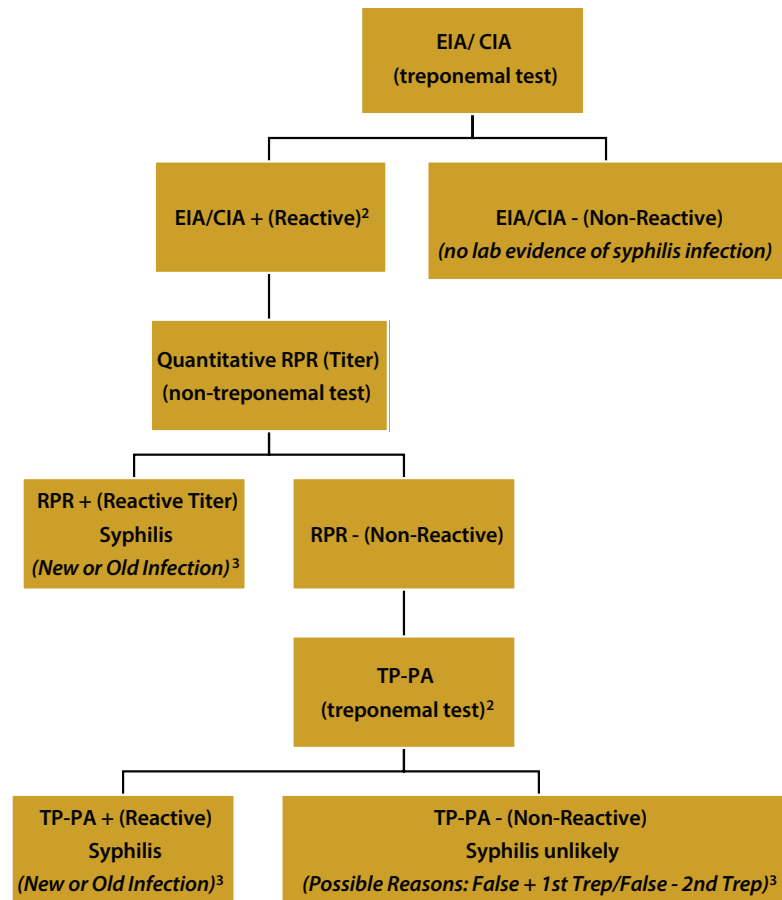
For STD clinical management consultation, call (800) 722-4794 (SBC), (510) 620-3400 (CA) or submit your question online to the STD Clinical Consultation Network at www.stdccn.org

All cases of syphilis must be reported to the Department of Public Health within one working day.
(California Health and Safety Code 120675-120715)



Reverse Sequence Syphilis SCREENING

Reverse Sequence Syphilis Serologic Screening Algorithm ¹



MMWR / February 11, 2011 / Vol. 60 / No. 5

1. SBC-DPH Recommended Algorithm. Algorithms used by laboratories may vary. Check with your laboratory provider.
2. When ordering EIA=enzyme immunoassay; CIA=chemiluminescence immunoassay; TP-PA=Treponema pallidum particle agglutination assay (treponemal tests) or RPR-rapid plasma reagin (non-treponemal test) it is important to order a REFLEX test when results are positive. Both types of tests must be used to confirm a diagnosis.
3. Results alone cannot be used to determine (New vs. Old/Treated vs. Untreated/Early vs. False Positive) so it is important to gather complete medical information and patient history to assist with treatment and additional evaluation considerations.

For STD clinical management consultation, call (800) 722-4794 (SBC), (510) 620-3400 (CA) or submit your question online to the STD Clinical Consultation Network at www.stdccn.org

All cases of syphilis must be reported to the Department of Public Health within one working day.
(California Health and Safety Code 120675-120715)

