



# NEWS



## News Headlines 11/30-12/3/2018

- FIRE DESTROYS ABANDONED WONDER VALLEY HOMESTEAD
- HOLIDAY DECORATION SAFETY TIPS
- Pedestrian airlifted after being hit by car on Palmdale Road in Victorville
- Motorcyclist critically injured in crash on 15 Freeway in Hesperia
- Multi vehicle crash on SB-15 in Hesperia causes traffic delays Friday
- Invasive oak beetle found in San Bernardino County

## **FIRE DESTROYS ABANDONED WONDER VALLEY HOMESTEAD**

Staff Writer, Z107.7 News

Posted: December 3, 2018

Squatters are presumed to have set a fire in an abandoned homestead in Wonder Valley Saturday night.

**County Fire** Captain Jay Dimoff said firefighters from Twentynine Palms, Wonder Valley, Joshua Tree, and the Combat Center were called at 9:19 p.m. to the blaze on Midway about a quarter mile north of Amboy Road.

The cabin burned to the ground; Dimoff said what made fighting the fire difficult was that there was no water source near the scene, so water had to be brought in.

Plus, the cabin was surrounded by tamarisk trees which were all on fire.

In addition, a live electrical line was hanging over the property, and firefighters had to wait for Southern California Edison to turn off power at the scene.

<http://z1077fm.com/fire-destroys-abandoned-wonder-valley-homestead/>

---

## **HOLIDAY DECORATION SAFETY TIPS**

Staff Writer, Z107.7 News

Posted: December 2, 2018

The holidays are finally upon us, which means many people will soon set out to find the perfect Christmas tree and begin hanging strand after strand of Christmas lights. It is important, however, to keep a number of safety precautions in mind when setting up your tree and lights for the holidays. Here with a few safety tips to help your family safely make it to 2019 is Reporter Heather Clisby...

As we hang the lights and string the tinsel, the **San Bernardino Fire** Department wants to keep you and your family safe through the season with these valuable tips: If you are using a natural tree, make a fresh one-inch base cut to open up sap-clogged pores so that the tree will be able to drink water. Choose a sturdy tree stand that will hold at least one gallon of water. Rinse the stand with one capful of bleach and one cup of water before installing the tree to reduce microorganisms that can inhibit the tree's water absorption. Be sure to water daily to avoid a seal being formed on the cut. Double check light decorations and artificial pre-lit trees for broken or burned-out bulbs and empty sockets while inspecting for broken or frayed wires. Damaged light strands should be thrown out. Remember, miniature lights produce less heat and reduce drying on a natural tree. Place the tree away from heating vents, fireplaces, wood stoves, radiators, TVs, or sunny windows. Turn off tree lights when leaving the house or before going to bed. Avoid overloading circuits—plug no more than three light sets into a single outlet. Post-holidays, remove a natural tree as soon as possible. Never burn any part of a Christmas tree in a wood stove or fireplace; it burns too fast and may explode. The best option is to recycle your tree, if possible.

<http://z1077fm.com/holiday-decoration-safety-tips-2/>

## Pedestrian airlifted after being hit by car on Palmdale Road in Victorville

Staff Writer, Victor Valley News

Posted: December 2, 2018



(photo courtesy of San Bernardino County Fire)

VICTORVILLE, Calif. (VVNG.com) — A pedestrian was airlifted to a trauma center with serious injuries following an auto versus pedestrian accident Sunday night in Victorville.

**San Bernardino County Firefighters** responded to the incident at about 6:41 pm, in the 14000 block of Palmdale Road, just east of El Evado Road.

For reasons still under investigation, a small compact sedan struck a male pedestrian knocking him to the ground.

“San Bernardino County Fire Helicopter 325 was requested to transport the patient to an out of area trauma center. The patient arrived at Arrowhead Regional Medical Center 15 minutes after departing the scene,” stated County Fire Captain Jeff Allen.

The driver of the sedan stayed at the scene. The cause of the crash is under investigation by the Victorville Police Department. Anyone with information regarding this incident is asked to call (760)-241-2911.

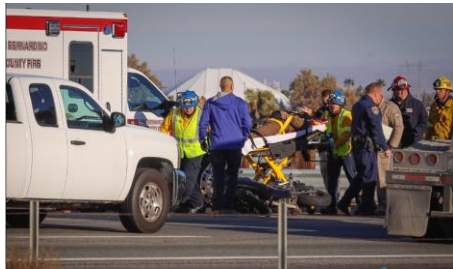
Additional information will be updated as it becomes available.

<https://www.vvng.com/pedestrian-airlifted-after-being-hit-by-car-on-palmdale-road-in-victorville/>

## Motorcyclist critically injured in crash on 15 Freeway in Hesperia

Staff Writer, Victor Valley News

Posted: December 1, 2018



The crash blocked the no.1 lane as paramedics treated the motorcyclist and officials investigated the crash. (Gabriel D. Espinoza, Victor Valley News)

HESPERIA, Calif. (VVNG.com) — A motorcyclist was critically injured during a crash on the I-15 freeway in Hesperia Saturday morning.

The crash was reported at approximately 8:05 a.m. on the northbound I-15 between Bear Valley Road and Main Street.

According to the California Highway Patrol incident logs, the male motorcyclist was said to have sustained “extensive injuries” during the crash.

Details surrounding the crash were not immediately available.

Additional information will be updated as it becomes available.

<https://www.vvng.com/motorcyclist-critically-injured-in-crash-on-15-freeway-in-hesperia/>

---

## Multi vehicle crash on SB-15 in Hesperia causes traffic delays Friday

Staff Writer, Victor Valley News

Posted: November 30, 2018



(photo: clip from YouTube video)

HESPERIA, Calif. (VVNG.com) — Four vehicles were involved in a crash on the I-15 freeway that caused all southbound lanes to close for about 20 minutes Friday morning.

The crash was reported at about 6:08 a.m. Friday, November 30, on the Southbound 15 Freeway between the Joshua Road and Highway 395 off ramps.

The crash involved a beige Toyota Rav 4, a white Hyundai Accent, a black Scion XB, and a blue sedan.

At least two people sustained non-life threatening injuries as a result of the crash.

California Highway Patrol Officers briefly closed down the southbound side while they helped push the damaged and disabled vehicles from lanes of traffic.

The incident caused traffic to back-up for several miles as CHP officers worked quickly to reopen all lanes of traffic. The no. 1 and 2 lanes were reopened at 6:28 am, with all lanes reopening at 6:46 am, according to the CHP incident logs.

<https://www.vvng.com/multi-vehicle-crash-on-sb-15-in-hesperia-causes-traffic-delays-friday/>

---

## **Invasive oak beetle found in San Bernardino County**

Staff Writer, Daily Press

Posted: November 30, 2018



The goldspotted oak borer is native to Arizona but now poses a threat to oak trees in the local mountains after one was found in Oak Glen near Yucaipa. [Courtesy of the U.S. Forest Service]

**OAK GLEN** — Forest and fire officials are asking residents to take heed of a invasive beetle taking root in local communities.

CalFire and the San Bernardino National Forest Service announced Thursday they had detected the goldspotted oak borer (GSOB) in recently-killed black oak trees in the Oak Glen community.

The GSOB is an invasive beetle native to southeastern Arizona that can kill oaks native to this state, officials said. Larvae found under tree bark was analyzed and confirmed to be GSOB.

The beetle has infested areas in San Diego, Riverside, Orange and Los Angeles counties. It's believed to be brought to the Oak Glen area via infested firewood.

Any community or area with coast live oaks, California black oaks, or canyon live oaks is vulnerable to GSOB infestation. Several mountain communities in the San Bernardino mountains and surrounding national forest lands contain a significant oak population.

Officials urge residents to take precautions to avoid moving infested firewood. Here are some tips: Use firewood harvested from the local area.

When traveling, buy firewood at the destination instead of bringing firewood from home. Leave any unused firewood behind.

Officials said they'll continue to collaborate to develop a response time for the beetle in this county. In the meantime, residents are urged to become familiar with the threat and prevention measures.

Visit [www.gsob.org](http://www.gsob.org) for more information on how to detect and prevent GSOB infestation.

<http://www.vvdailypress.com/news/20181130/invasive-oak-beetle-found-in-san-bernardino-county>