

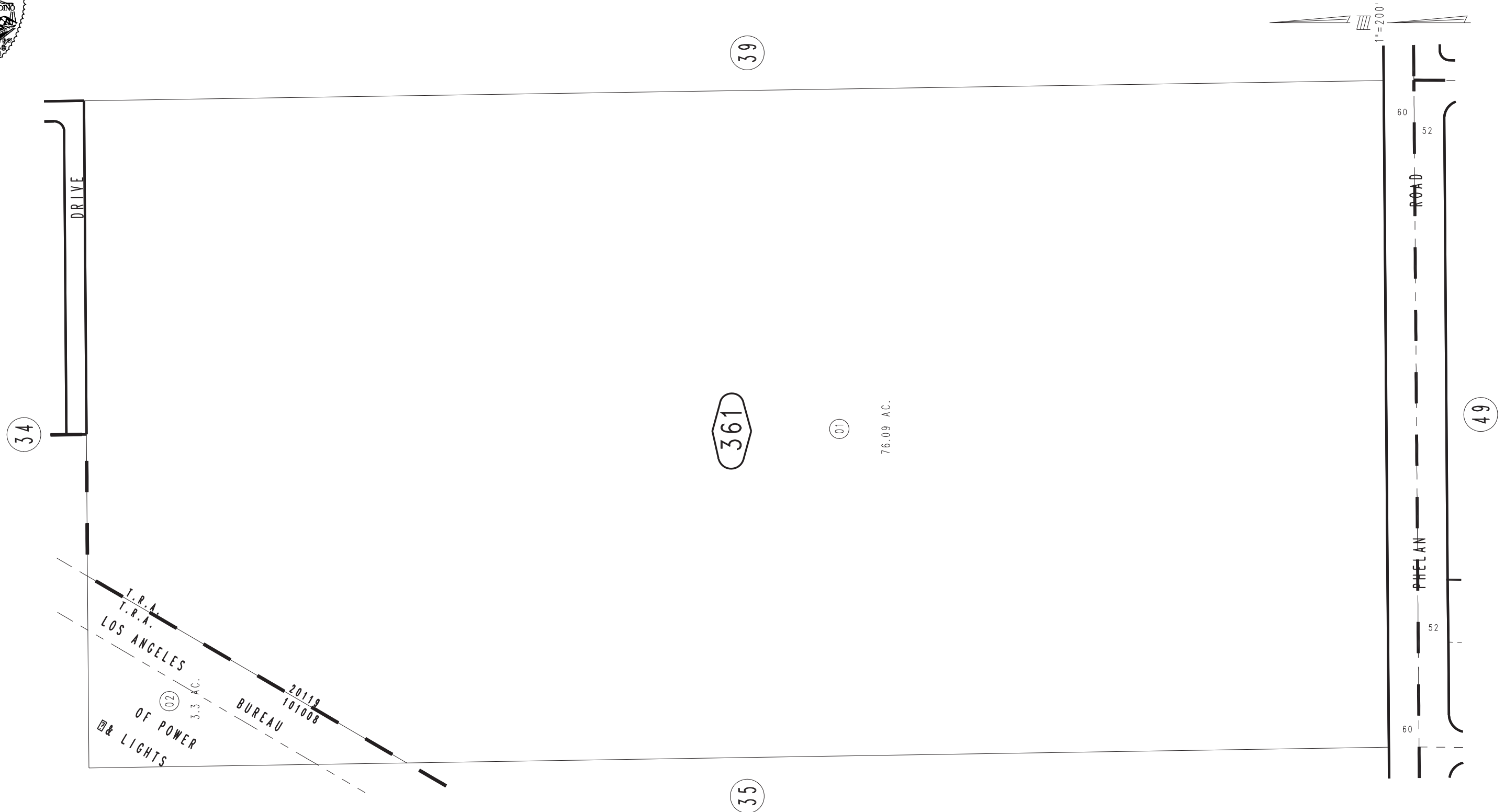
THIS MAP IS FOR THE PURPOSE
OF AD VALOREM TAXATION ONLY.



E.1/2, S.W.1/4, Sec. 16, T.4N.,R.5W., S.B.M.

City of Hesperia
Snowline Joint Unified
Tax Rate Area
101008, 20119

3064-36



FEBRUARY 1995

Assessor's Map
Book 3064 Page 36
San Bernardino County

REVISED
03/03/10 LH