

**Appendix C:
Sierra Club Letter Exhibit**

THIS PAGE INTENTIONALLY LEFT BLANK

1 **Stephanie Jefferson**
2 **7898 Wisteria Court**
3 **Highland, California 92346**
4 **(909) 425-1351**

5
6
7
8
9
10
11 **THIS REPORT WAS PREPARED & TRANSCRIBED BY:**

12
13 **STEPHANIE JEFFERSON OF**
14 **JEFFERSON'S TRANSCRIPTION SERVICES**
15 **REGARDING**

16 ***ROBIN ELIASON AT BIG BEAR LAKE CITY COUNCIL***

17 **Case # Unknown**

18 **Date of Interview: Unknown**

19 **Date Transcribed: 3-3-09**
20
21
22
23
24
25
26
27
28
29
30

KEY:
COUNCILWOMAN: Unidentified Female Councilperson
COUNCILMAN: Unidentified Councilman
COUNCILMAN #2: 2 nd Unidentified Councilman
COUNCILMAN #3 rd Unidentified Councilman
COUNCILMAN #4: 4 th Unidentified Councilman
ELIASON: Robin Eliason

NOTE: THE COUNCILMEN MAY BE MIXED UP AT TIMES

FEMALE COUNCILPERSON: Robin is in the ah, in the audience I think, right Robin? Um, you were quoted in The Sun um, regarding the eagle count. Can you, may I ask her some questions?

MALE: COUNCILPERSON: Yeah, go ahead.

COUNCILWOMAN: Robin the, the twelve eagles that were counted, were those in our area or was that across the mountain top in Silver Lake and Hemet, too?

ELIASON: That was total for San Jacinto and San Bernardino mountains. We had a total of six eagles sited on Saturday here in the Big Bear ba, basin.

COUNCILWOMAN: How many I'm sorry?

ELIASON: Six.

COUNCILWOMAN: Six. So we had half of the twelve, huh?

ELIASON: Right.

COUNCILWOMAN: Um, you said that you suspected that some of the factors that might be um, affecting the eagle count had to do with building along the lake, ah, of course our early Winter, we've still got a lot of our lake frozen and then loss of perch trees due to drought and bark beetles and new housing. Since Silver Lake and Arrowhead Lake are totally surrounded by buildings and there's no open space around them, I'm wondering is it really fair to compare us with a good deal of open space that is protected by the forest service with those other areas?

ELIASON: Um, well one clarification, that Silverwood Lake, which is a state recreation area, there are no, there's no development around that lake. Um, you're right about Lake Arrowhead, it's, it's fully developed around the lakeshore. Um, yeah I, I think it's a fair comparison. I think um, in the almost twenty years I've lived here, we have lost or significantly degraded a lot of perch habitat along the lakeshore. Perch habitat um, the important components needs to be near shallow water. Um, needs to have big, tall trees, old trees. Um, and they will actually use shorter trees if taller trees are not available.

1
2 Um, since this project was approved in 1984, we've had Big Bear Shores, the RV
3 development in bald eagle habitat substantially reduced the amount of bald eagle
4 perch availability there. The north side of Stanfield Marsh, same thing, Castle
5 Glenn development, all around Baldwin Lake, um Eagle Point Estates, Eagle Knoll,
6 and then if you add in the individual houses that have been developed throughout
7 the valley along the shoreline, we've lost a lot of perch habitat um, the cumulative
8 impact I think is substantial.

9
10 COUNCILWOMAN: Now understanding that we only have jurisdiction and control
11 over a very small portion of what you just described um...and this specific project
12 is literally surrounded by protected area, um I'm struggling frankly with, and I
13 understand the cumulative affect, and I'm not try, I totally agree with you that
14 maybe I'm not thinking of the same Silver Lakes that, that you're talking about
15 here, cause the ones that I was talking about have homes literally all around
16 them.

17
18 ELIASON: Silverwood Lake down just west of Lake Arrowhead. It's a state
19 recreation...

20
21 COUNCILWOMAN: Oh okay.

22
23 ELIASON: ...area. It's a park.

24
25 COUNCILWOMAN: Okay. So it is a completely different area...

26
27 ELIASON: It's, it's...

28
29 COUNCILWOMAN: ...than I was...

30
31 ELIASON: ...about to have some substantial development to the north of the park
32 property, but...

33
34 COUNCILWOMAN: Well, but we have no jurisdiction over that.

35
36 ELIASON: Right, right.

37
38 COUNCILWOMAN: No jurisdiction in Arrowhead. Hemet...

39
40 ELIASON: Right.

41
42 COUNCILWOMAN: ...San Jacinto, we are in this one little tiny corner of the world.
43 So I, I, I'm just really um, when we are lumped into all of the rest of what you
44 described, I'm not sure it's a fair comparison for us.

1 ELIASON: Well let me clarify. I, I, I don't think I'm lumping um, the, the declines
2 that we've seen in the bald eagles wintering in the Big Bear basin, we have seen
3 our numbers continue to go down. Um, until the 1990's we averaged a high count
4 in the 20's, above 20 um, and in the mid-20's and, and high 20's. Between 1990
5 and 2003 we generally averaged in the teens, the high teens. Since 2003 we've
6 been having a high count of 6-8 eagles each Winter just in the Big Bear area.

7 Um, why, well there are a number of potential factors. Weather is certainly one of
8 them and, and then the loss of perch habitat I think is also the other...

9 COUNCILWOMAN: In the valley.

10 ELIASON: In, in this valley, right, around Big Bear...

11 COUNCILWOMAN: Right.

12 ELIASON: ...and Baldwin Lakes.

13 COUNCILWOMAN: Right.

14 ELIASON: I think that, that is really important. The other factor is we have a lot
15 more people recreating around the lakeshore...

16 COUNCILWOMAN: Um hum.

17 ELIASON: ...on any given Winter day. Um, so I think the disturbance level from
18 people just hanging around the lake, fishing, walking dogs, doing whatever, um I
19 think that disturbance lever, level has also gone up. At least these are my
20 personal observations of living here almost twenty years. Now the, the idea that
21 the, this development that you're considering is surrounded by eagle habitat, well
22 you also need to consider would the development itself affect those open space
23 areas, the eagle preserve um in the adjacent area, would it increase the
24 disturbance, would it increase um, would it decrease the perch habitat quality.

25 COUNCILWOMAN: Well and from our understanding there are five mitigating
26 factors that have been imposed upon it that reduces that impact.

27 ELIASON: I, I...

28 COUNCILWOMAN: Thank you.

29 ELIASON: Yeah. I, I, I think that since, in the 24 years since that study was done,
30 there have been substantial changes in the valley um to the bald eagle habitat.
And so, and a couple of clarifications from things I heard. I, I respectfully disagree
that the, that site is not flying squirrel habitat, it, it is certainly flying squirrel
habitat. Um, I have seen flying squirrels in this valley in, in areas that have um,

1 that are a lot more open than, than the Castle Glen Senior Center site. Um, the
2 other thing is that the bald eagle is state, is still a state protected, under the state
3 endangered species act.

4 COUNCILWOMAN: Right. I understand that. Thank you.

5 ELIASON: Any other questions?

6 COUNCILMAN #1: Mr. Young?

7
8 COUNCILMAN #2: Yeah ah Robin before you leave I had a couple of quick
9 questions. Can you briefly give me a, a, a quick scenario on how...how you go out
10 and count these eagles? Who counts them? How do you do it? How do you make
11 sure that the count is accurate? How do you make sure you didn't miss them?
12 How do you make sure they weren't counted twice? Um...

13 ELIASON: Sure. Um, I, we use volunteers and we station people around,
14 specifically around Big Bear Lake at about twenty different observation points and
15 they are stationed from 9:00 to 10:00 a.m. and from, during that one hour period
16 people write down on, on maps and data sheets what they see, when they see it,
17 where they see it. Um, and then the data sheets come back in and I spend a
18 couple hours going through the data sheets and figuring out if, if there was an
19 eagle at point X that disappeared at say 9:15 was flying to the west, if my
20 observer at that western point picked up a bird about 9:18, I'm going to consider
21 that the same eagle. It's not, I'm not going to count it as two different eagles.
22 Um, so it's, yeah we use volunteers. We generally have enough volunteers so
23 they can double up people so that I have experience birders with less experience
24 people. Um, when the data sheets come back in, I spend quite a bit of time
25 talking to the observers, asking them about their observations, um and trying to
26 tease out well if they weren't quite sure, I'd talk about the, the characteristics of
27 the bird that they saw and I try to figure out well was it an eagle or was it a
28 hawk, or a raven, um...

29 COUNCILMAN #2: Okay.

30 ELIASON: ...and then I, I actually do make notes about well I'm not sure, I
believe that one...

COUNCILMAN #2: Okay.

ELIASON: ...um, and so it's, there's um some degree of uncertainty with the
count, but...

COUNCILMAN #2: Well and that's to my point that I'm trying to make, is the fact
of the matter is that number one, we are using volunteers and, and I mean God
bless them for doing what they do, I don't, I'm not objecting to that all and I, and

1 I commend them for putting the time up to, to ah, to try to help out and try to
2 get a handle on this, but, but the fact of the matter is, if we're only counting an
3 eagles, eagles an hour a day from 9:00 to 10:00, is that everyday? Is that once a
4 month?

5 ELIASON: It, it...

6 COUNCILMAN #2: ...is it, is that...

7 ELIASON: It's once a month. It's a snapshot in time and what it does is it's given,
8 over a thirty year period it's given us a high count for those four months of the
9 Winter for thirty years.

10 COUNCILMAN #2: Okay.

11 ELIASON: And so we pay attention to the high count. It's um, it's very difficult to
12 confuse an adult bald eagle with another bird. Um, it's also very difficult to
13 confuse an immature bald eagle. They're, just the size difference is so...

14 COUNCILMAN #2: How difficult is it to miss a pair of eagles in one hour?

15 ELIASON: We could, we could absolutely miss them. This is a minimum count. We
16 could, could be having more, but that said myself and my biologist who work with
17 me, we do spend some time observing eagles all winter long every year.

18 COUNCILMAN #2: Okay.

19 ELIASON: So, so we are essentially validating um, through our observations what
20 we expect to see and, and this, this time last week when people were asking me
21 what they expected the, what I expected the count to show I said somewhere
22 between four and six eagles. We had six.

23 COUNCILMAN #2: Okay, just...

24 ELIASON: Um...

25 COUNCILMAN #2: ...and just one more quick question and then I'll, I'll, I'll ah...be
26 quiet for a minute. Um, is there um, isn't it, isn't it true, and just based on some
27 of the stuff that I've read, isn't it true that the migration of the eagles, one of the
28 things that affects the migration is the condition, the weather obviously...

29 ELIASON: Absolutely.

30 COUNCILMAN #2: ...the condition of our lake, the food supply in general ah, and
those types of things, is that not, doesn't that come into play when it comes to
the migrate, the actual migration? I mean from what I understand an eagle, and I

1 hope I'm not insulting anyone or an eagle for that matter, but from what I
2 understand the eagles are fairly lazy anyway from what I've read, based on what
3 I've read, and the fact of the matter is they're going to go to, or stay or go to the
4 closest food supply that they can find. They're not necessarily going to fly to Big
5 Bear because they had a great time last year. So...I mean is that a correct
6 statement?

7 ELIASON: They follow the food supply. In Winters when we don't have big
8 waterfall populations, we don't have big eagles, the eagle populations. Um, so
9 weather absolutely affects how many eagles we have in, in the valley. Does that
10 account for the decline that we've seen? I think it, it contributes to the decline. I
11 also think that loss of habitat around the lake has, has contributed to...

12 COUNCILMAN #2: But the overall count is up.

13 ELIASON: No, the overall count is down.

14 COUNCILMAN #2: No, I'm not talking about, according to the report um...the
15 overall count is up substantially ah, countrywide. Not, not here in Big Bear Lake,
16 but, but um, ah to give you an example it says that the um, it says however nat,
17 nationally the numbers of bald eagles and nesting pairs of bald eagles has steadily
18 increased from only 487 pairs in 1963 to over 9, 9,789 nesting pairs in 2006.

19 ELIASON: Right. And...

20 COUNCILMAN #2: So the overall count is up nationally.

21 ELIASON: The population of bald eagles in North America has continued to
22 recover since dramatic decline when we only had about 400 nesting pairs...

23 COUNCILMAN #2: Right.

24 ELIASON: ...in the early 60's. The population continues to grow, go up, but the
25 population in Big Bear is going down.

26 COUNCILMAN #2: Yeah, but there's no, there's no way to force the eagles to fly
27 to Big Bear.

28 ELIASON: Well the question and the, the real bottom line question is why are
29 populations expanding throughout North America at, we should be seeing
30 increasing numbers in the Big Bear area, not declining numbers.

COUNCILMAN #2: But that could deal with food supply, and the condition of the
lake, and the weather and everything else.

ELIASON: Those are some of the factors.

1
2 COUNCILMAN #2: Thank you. All done.

3 COUNCILMAN #3: I just wanted to ask Mr. Matthews once again that when the
4 negotiations do begin that um, the defensible space to the developer is the
5 responsibility of the developer until everything is in place. Cause if we're talking
6 ten years, and I'm hearing longer, maybe twenty, maybe fifty, and that property
is, I've driven by many, many times, ah is heavy brush, lets put it that way.

7 COUNCILMAN #2: Right.

8 COUNCILMAN #4: But that is yes another provision that we can insert into the
9 development agreement. I do not believe the draft before you adequately
10 addresses that.

11 COUNCILMAN #3: I know that. I know.

12 COUNCILMAN #4: And, and we can...

13 COUNCILMAN #3: That's my brunt of it.

14
15 COUNCILMAN #4: Absolutely. If in fact you're inclined to want to pursue this and
16 to enter into a development agreement that's yet one more um, provision that I
think can add to the agreement, yes.

17 COUNCILMAN #3: Thank you.

18
19 MALE: Getting some exercise. Um, would it be correct in my saying that because
20 of the development in different areas around the lake since 1984, there's been a
21 lot of development, it puts more of an ownness upon any one particular perch
from foraging area?

22 ELIASON: I would agree with that statement. The, the, the remaining perch
23 habitat has become more and more important. Because there's less of it.

24 COUNCILMAN #3: That would then apply to any area, you know Big Bear Lake,
25 Baldwin Lake, etc., etc., including this proposed project.

26 ELIASON: Right.

27 COUNCILMAN #3: I think, and again I can't speak for Tim Crans, I think that's
28 what he's talking about and why he's sort of changing his mind twenty years later
29 would be my guess, but I can't speak for him. And I've...

30 COUNCILMAN #2: Have you talked to him?

1 COUNCILMAN #3: Um, no. But that's something we can inquire if we want to.
2 Something that we can explore. And again I've qualified it quite a bit. Um, from
3 what I understand to, to answer ah, Mayor Pro Tem Yom's concerns, um what I
4 know about the empirical method, I understand that um, um yes it's an inexact
5 science ah, counting eagles, it's volunteers, but it's done over twenty, what is it,
6 almost, well thirty years...

7 ELIASON: Thirty years.

8 COUNCILMAN #3: ...I think it starts at 1978. Um, and you can just see the
9 steady decline. I have it here. I'm talking about the average number of eagles in
10 ah, '78, '79 was 18 and it goes 14, 18, 15, 16, 18, 10, 18, 18, 16, way, you know
11 just keeps going do, do, do, do, do...2000 ah, 13, 9, 11, 9, 4, 6, 6, 4. Um, over a
12 period of time in repetition that tends to iron out um, imperfections like maybe
13 um, are not totally reliable ah, counting source. So I think empirically it starts to
14 iron it out. You have statistical methods to ah, account for that, but that's what
15 they actually measure. So...

16 COUNCILMAN #2: And my point was not, was not the ah, the actual count, my
17 point that it's a very unscientific way to count the eagles and for, for, and I'm not
18 saying that maybe there's more, maybe there's less. Maybe one was counted
19 twice, but...

20 COUNCILMAN #3: Maybe, maybe, oh I understand.

21 COUNCILMAN #2: ...maybe ten were missed.

22 COUNCILMAN #3: Oh I understand, that's exactly what I'm addressing. And I'm
23 saying after a period of thirty years, thirty units, it's a steady decline like that.

24 COUNCILMAN: Kirk...microphone.

25 COUNCILMAN #3: Oh, it's a steady decline and then that tends to iron out any
26 imperfections in the ah, ah, the measuring device.

27 COUNCILMAN #2: The, and that could be due to a number of different reasons.

28 COUNCILMAN #3: Yes.

29 COUNCILMAN: Mr. Kirk, Mr. (unintelligible) if I could, I'd like to ask Robin a
30 question, it relates to what you're saying right now, I've been dying to ask this.
The mythology um, that's been used over the thirty years, has it been identical
um, the same type, whether it's been measured off at specific times in observing
and so forth, so the methodology has not changed.

1 ELIASON: It's been absolutely the same the whole time. Ah, we have a variation
2 in the number of volunteers that we get and the number of our own biologists
3 that, that we have on staff participating.

4 COUNCILMAN: I've got a further question, but I want you to finish.

5 ELIASON: I feel fairly confident...

6 COUNCILMAN: Thank you.

7
8 ELIASON: ...with the numbers that we say.

9 COUNCILMAN: If it were over a period of five years, maybe ten years then I'd say
10 that's not enough of the sample and it could vary, but it's thirty years. It, again it
11 is a ah, it is a guess in a sense and you have to make a judgment. Um...also um
12 the water fowl, the point was they (unintelligible) here, there's a statement,
13 there's a document that I, I got that distributed to the council back in November.
14 Um, it was a forest service document and...concerning the water fowl, Big Bear
15 basin, including Baldwin Lake used to regularly support Wintering populations, 25
16 to 30 eagles past twenty years, average height, and it shows how its decreased.
17 Um, and then it says...

18 COUNCILMAN #2: In Baldwin, right?

19 COUNCILMAN: In the past decade the numbers are, well it says Baldwin and Big
20 Bear, the numbers are generally closer to 15 to 17, it's lower now because this is
21 written in the early 2000, and likely reflect the continued losses of good perching
22 areas and developing shoreline affecting use by Wintering water fowl, which I
23 understand ducks and coots are main food. I don't think it's a matter of them
24 wanting a vacation in Big Bear, I think it's a matter of can they survive here and
25 eat here. I don't think it's not only perching habitat, what I'm understanding and
26 I'm, I say these to get maybe confirmation from you ah Ms. Eliason um...that
27 possibly it's ah, the habitat is scaring or whatever, making it ah, ah less congenial
28 for the water fowl that they eat. So they're less likely to want to come here as
29 well.

30 ELIASON: The water fowl population's probably fluctuate a lot because of the
weather, but also because of disturbance. Um, the water fowl, most of those
species really like the shallow water, that's the shallow, sheltered coves are the
most important areas. Um, and again we've seen a lot of development around
those areas. Um, I, I suspect that some of our low numbers in recent years is
related to heavy ice conditions that we've had starting out in the Winter. And
when that happens early in migration, I think a lot of the ducks just keep flying
looking for open water. Um, so I, I do think that there, there is some correlation
there. I was hoping for a Winter that would not have ice on major part of the lake
for the beginning of the Winter just to see if our numbers went back up. I, I

1 expect that they would go back up. I don't know, I, my, my professional opinion is
2 that their numbers will probably not go all the way back up to the historic highs of
3 '28, mid-20's um, just because of the, the loss of perch habitat that we've, we've
4 felt in the, in the valley over the past twenty, thirty years.

5 COUNCILMAN: Thank you. And just a statement for this um...again it's an exact.
6 We don't know, I, I, what I'm understanding is we don't know the exact um, um,
7 factors that are affecting the decreasing eagles in the valley, some say it could be
8 development, it could be ah climate change, it could be ah, you were saying the
9 freezing of the ah lake early discourages the eagles and the water fowl from
10 coming, could be a mixture of things. Um, like I said depends upon how
11 committed we are to maintaining the eagles in this valley or not and this project
12 to me um, will reflect our commitment. Um, we can say we want our eagles and
13 ah, you know quite an article in the Grizzly about how we prize our eagles and we
14 have the discovery center which goes, gives eagle tours and um, it's a big part of
15 it in the future, and we need to possibly the phrase would be put our money
16 where our mouth is. Um, actions speak louder than words in how we prize our
17 eagles we want. And again we cannot conclusively say whether or not um,
18 development is the sole factor, but common sense at least in my eyes seem to be
19 it's a major factor.

20 ELIASON: I think the paradox is that the, throughout North America populations
21 of bald eagles continue to increase and, and yet we are seeing the reverse here
22 locally. That's the million dollar question.

23 COUNCILMAN: I don't think we'd make them extinct, but the question is do we
24 want them in our valley or not.

25 COUNCILMAN #2: But the, the, the fact of the matter is, I would assume under
26 that scenario Mr. (unintelligible) that ah, if we denied this project, is there some
27 guarantee that the eagles are going to come back. I would say no. I mean there
28 are no guarantees.

29 COUNCILMAN: No.

30 COUNCILMAN #2: And, and nobody can stand up there and say deny this project
or any other project in the valley for that matter and it's going to automatically
bring the eagles back and I would assume you would agree with that.

ELIASON: What we've seen is an incremental loss each, each...

COUNCILMAN #2: No, understand.

ELIASON: ...project...

COUNCILMAN #2: But the point, my point...

1
2 ELIASON: ...is incremental...

3 COUNCILMAN #2: ...my point being is there are other things, other than this
4 development or any other development for that matter, that deal with the
5 migration of the eagle into this valley. And it, and you yourself has admitted it
6 deals with the food chain, it deals with the freezing of the lake, it deals with a
7 number of factors that we don't control.

8 ELIASON: All I can tell you is that the area on the north side of Stanfield Marsh is
9 um, good perch habitat for bald eagles, they use that area.

10 COUNCILMAN #2: Okay.

11 COUNCILMAN #3: I've got one question for Robin if I...

12 ELIASON: Yeah.

13 COUNCILMAN #3: ...if I could. The um, this particular area, I mean it has been
14 designated for development um, and even if we do nothing, it's still can be
15 developed to a certain extent. Um...in, in loss of certain amount of the hab, the
16 habitat out of our control, there's nothing we can do about it, um, so I'm trying to
17 hear your concern and is your concern that ah, ah, for a, a um, thirty-five unit
18 development would have more impact than a, and I'll use an extreme example,
19 but you could put a 15,000 square foot house on it. Again we have no control
20 over that, unless we as in city council, decide to condemn the property, take it
21 from the owner and make it an eagle preserve. So could you give your opinion on
22 that? And I have a second follow up question.

23 ELIASON: Yeah um, I...as a federal government employee, I really don't think I'm
24 suppose to, to weigh in on something like that. I can, I can tell you that that area
25 is perch habitat for bald eagles. Um...what, what project might or might not be
26 better on the site in terms of bald eagles, that would take an analysis and, and
27 that's not my role here tonight.

28 COUNCILMAN #3: I understand that. Um, the, the question has always perplexed
29 me and, and I love the eagles and I live out near eagle point and, and ah, see ah
30 (unintelligible) out in the tree and I actually haven't seen them recently, but the
question I have is, is um it just, it just doesn't seem like we're the right type of
habitat for um, for nesting the eagles. I don't know why. I spend a lot of time in
Catalina and the population seems to be exploding there. Um, and I don't know
why it exploded, is exploding there and we've never had a nesting pair in Big
Bear. Even when the population was 25, even when our population was cut in half
here, we've never seem to be able to establish a nesting pair of eagles and do
you have any opinion regarding that?

1 ELIASON: No, I think it's just a matter of time. We have um, in the past three
2 years we have successful nesting down at Lake Hemet. In the early 90's we did
3 have two nesting attempts between Silverwood and Lake Arrowhead. Um, we've
4 certainly got suitable habitat up here and, and what we're seeing statewide is,
5 and if I brought slides I could show you, but um there is a slide that shows the,
6 the distribution of nesting, bald eagles nesting territories throughout the state of
7 California over time. And if you could picture the state um, in the, I think, I think
8 the, the, the map starts in the 6, in the 70's and all of the nesting territories there
9 in the northern part of the state, each decade they expand farther and farther
10 south. Um, so we are at the edge um, that expanding distribution. Um I, I firmly
11 believe that we will see nesting bald eagles in the San Bernardino mountains
12 within five or ten years. Um, and, and basically what's happened as, as the
13 population recovers in northern areas, the adult birds continue to occupy their
14 historic nesting territories and the babies they produce get kicked out of the area,
15 the adults don't want the competing for food in, in prime nesting sites and so they
16 get kicked out. So, so each year those juveniles have to move farther and farther
17 south to establish their own nesting territories. It's a matter of time.

18 COUNCILMAN: Um, we actually have a long ways to go. So I don't, I don't know if
19 (unintelligible) five minute break, quick five minute break and, and come back to
20 this and um, I don't know if there's anymore questions for Robin if she can hang
21 with us a little bit longer um, regarding that. Do you have any questions for
22 Robin? Okay. Thank you. Lets take a five minute break and we'll come right back
23 and get back to this.

24 END OF RECORDING
25
26
27
28
29
30

1 **TRANSCRIBER'S CERTIFICATE**

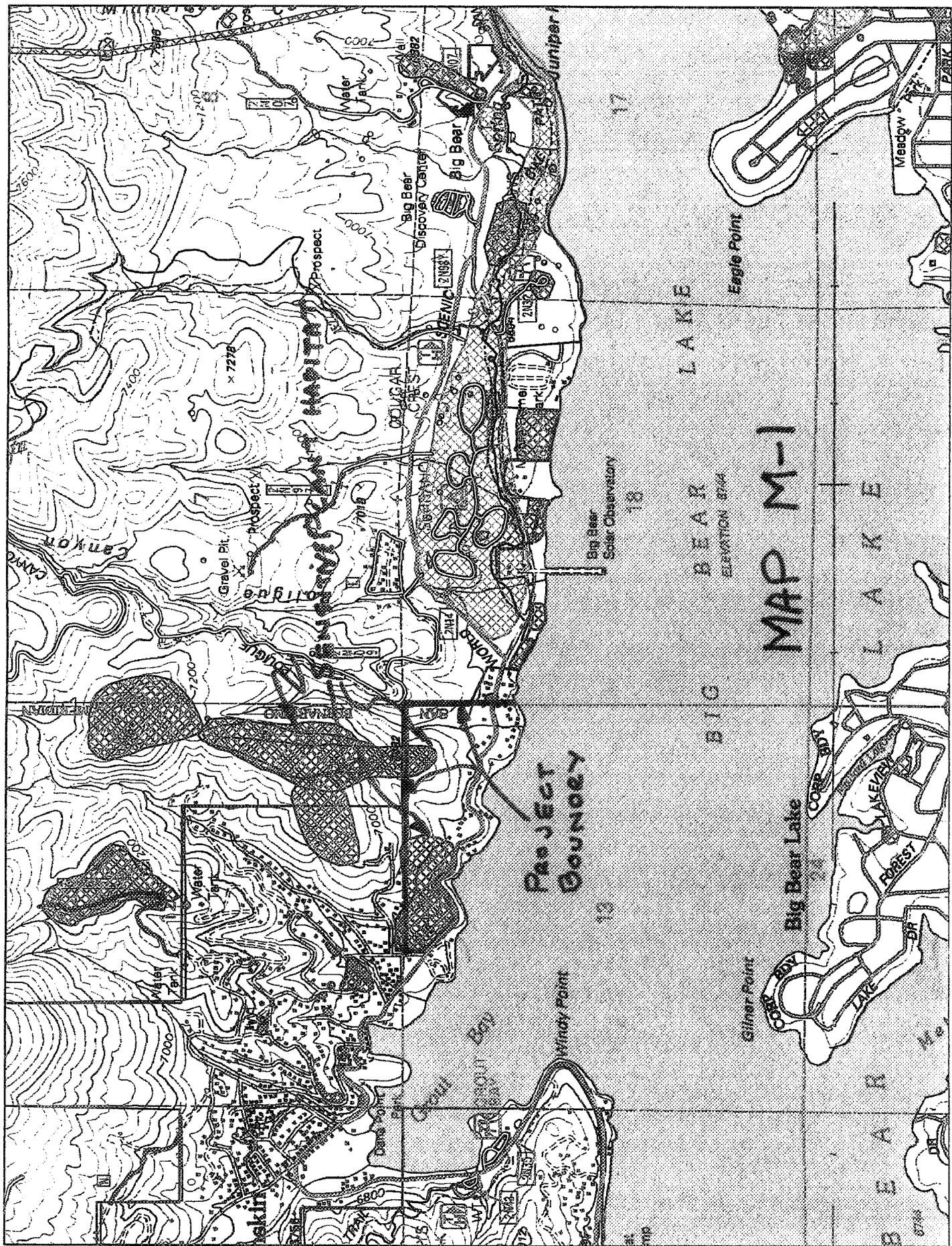
2 I, Stephanie Jefferson, hereby certify that the foregoing transcript is a true and
3 correct transcript as possible from the original taped interview.

4 I further certify that I am neither attorney, nor counsel for, nor related to or
5 employed by any of the parties to the action in which this transcription is
6 presented; and furthermore, that I am not a relative or employee of any person
7 employed by the parties hereto or financially interested in the action.

8 In witness whereof, I have hereunto subscribed my name this 3rd day of March,
9 2009.

10 ***Robin Eliason at Big Bear Lake City Council Meeting***
11 ***Unknown Case #***

12
13
14 _____
15 Stephanie Jefferson
16 Original copy signed and sent to Donald Jordan
17
18
19
20
21
22
23
24
25
26
27
28
29
30



Project
Bounoey

MAP M-1

L A K E

B I G B E A R

B I G B E A R L A K E

L A K E

B E A R

Gilmer Point

Eagle Point

Windy Point

13

18

17

14

15

16

17

18

19

20

21

22

23

24

25

26

27

28

29

30

31

32

33

34

35

36

37

38

39

40

41

42

43

44

45

46

47

48

49

50

51

52

53

54

55

56

57

58

59

60

61

62

63

64

65

66

67

68

69

70

71

72

73

74

75

76

77

78

79

80

81

82

83

84

85

86

87

88

89

90

91

92

93

94

95

96

97

98

99

100

101

102

103

104

105

106

107

108

109

110

111

112

113

114

115

116

117

118

119

120

121

122

123

124

125

126

127

128

129

130

131

132

133

134

135

136

137

138

139

140

141

142

143

144

145

146

147

148

149

150

151

152

153

154

155

156

157

158

159

160

161

162

163

164

165

166

167

168

169

170

171

172

173

174

175

176

177

178

179

180

181

182

183

184

185

186

187

188

189

190

191

192

193

194

195

196

197

198

199

200

201

202

203

204

205

206

207

208

209

210

211

212

213

214

215

216

217

218

219

220

221

222

223

224

225

226

227

228

229

230

231

232

233

234

235

236

237

238

239

240

241

242

243

244

245

246

247

248

249

250

251

252

253

254

255

256

257

258

259

260

261

262

263

264

265

266

267

268

269

270

271

272

273

274

275

276

277

278

279

280

281

282

283

284

285

286

287

288

289

290

291

292

293

294

295

296

297

298

299

300

301

302

303

304

305

306

307

308

309

310

311

312