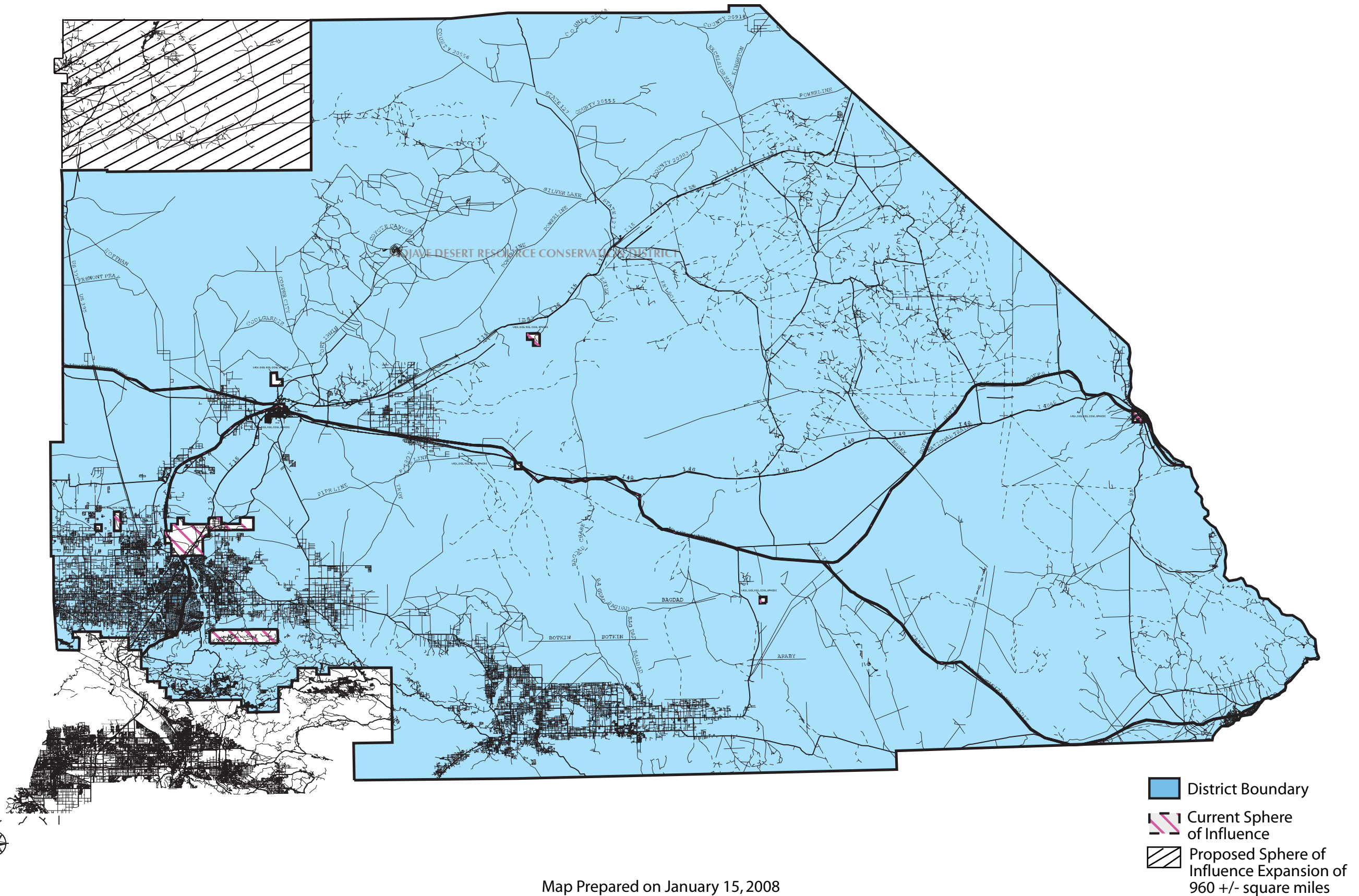
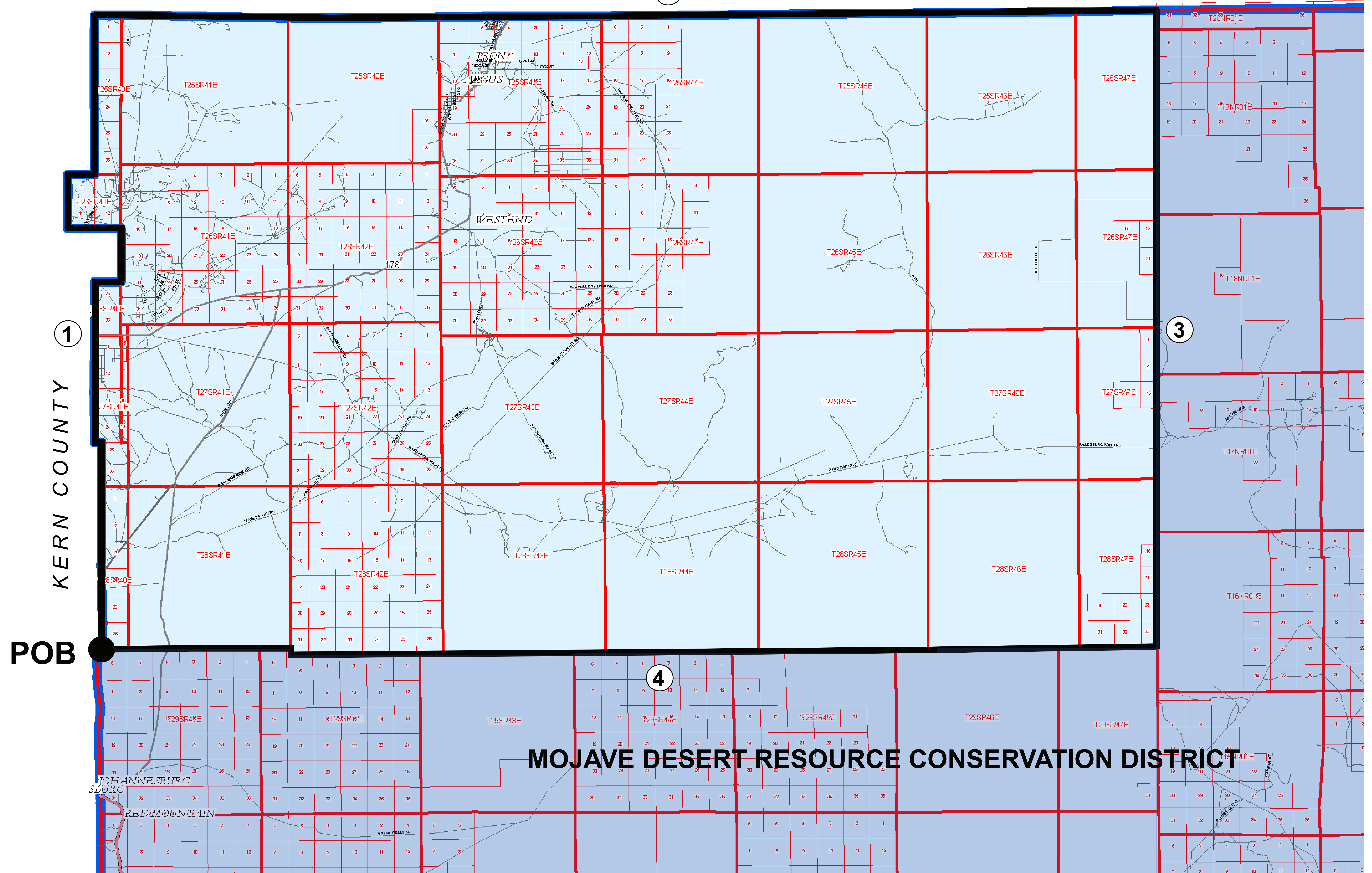


LAFCO 3002 - Service Review and Sphere of Influence Update (Expansion) for the Mojave Desert Resource Conservation District



Map Prepared on January 15, 2008



KERN COUNTY ①
POB

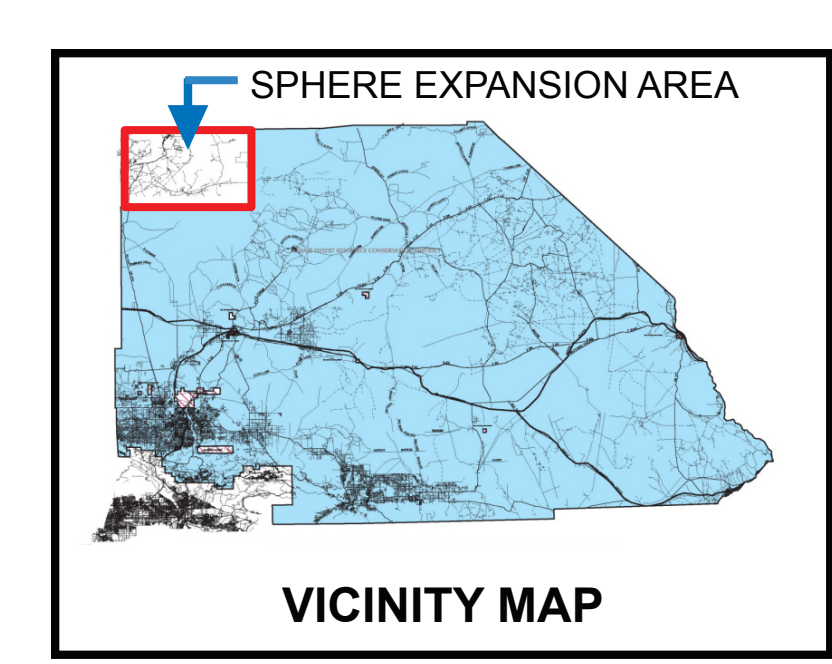
③

④

MOJAVE DESERT RESOURCE CONSERVATION DISTRICT

LAFCO 3002
SPHERE OF INFLUENCE EXPANSION
FOR MOJAVE DESERT RCD
(CHINA LAKE NAVAL WEAPONS CENTER
AND THE TRONA/SEARLES VALLEY AREA)

- Sphere Expansion Boundary
- County Boundary
- Proposed Sphere Expansion Area
- Existing MDRCD Area
- Course Numbers
- Township Boundary
- Section Boundary
- POB Point of Beginning



SAN BERNARDINO COUNTY SURVEYOR 825 E. 3RD. ST., SB, CA 92415-0850	Daniel C. Moye County Surveyor County of San Bernardino
LAFCO 3002 SPHERE REVIEW AND SPHERE OF INFLUENCE UPDATE FOR MOJAVE DESERT RESOURCE CONSERVATION DISTRICT	By _____ Deputy
GENERAL DESCRIPTION CHINA LAKE NAVAL WEAPONS CENTER AND THE TRONA/SEARLES VALLEY AREA	L.S. No. _____ Exp: _____ DATE: _____