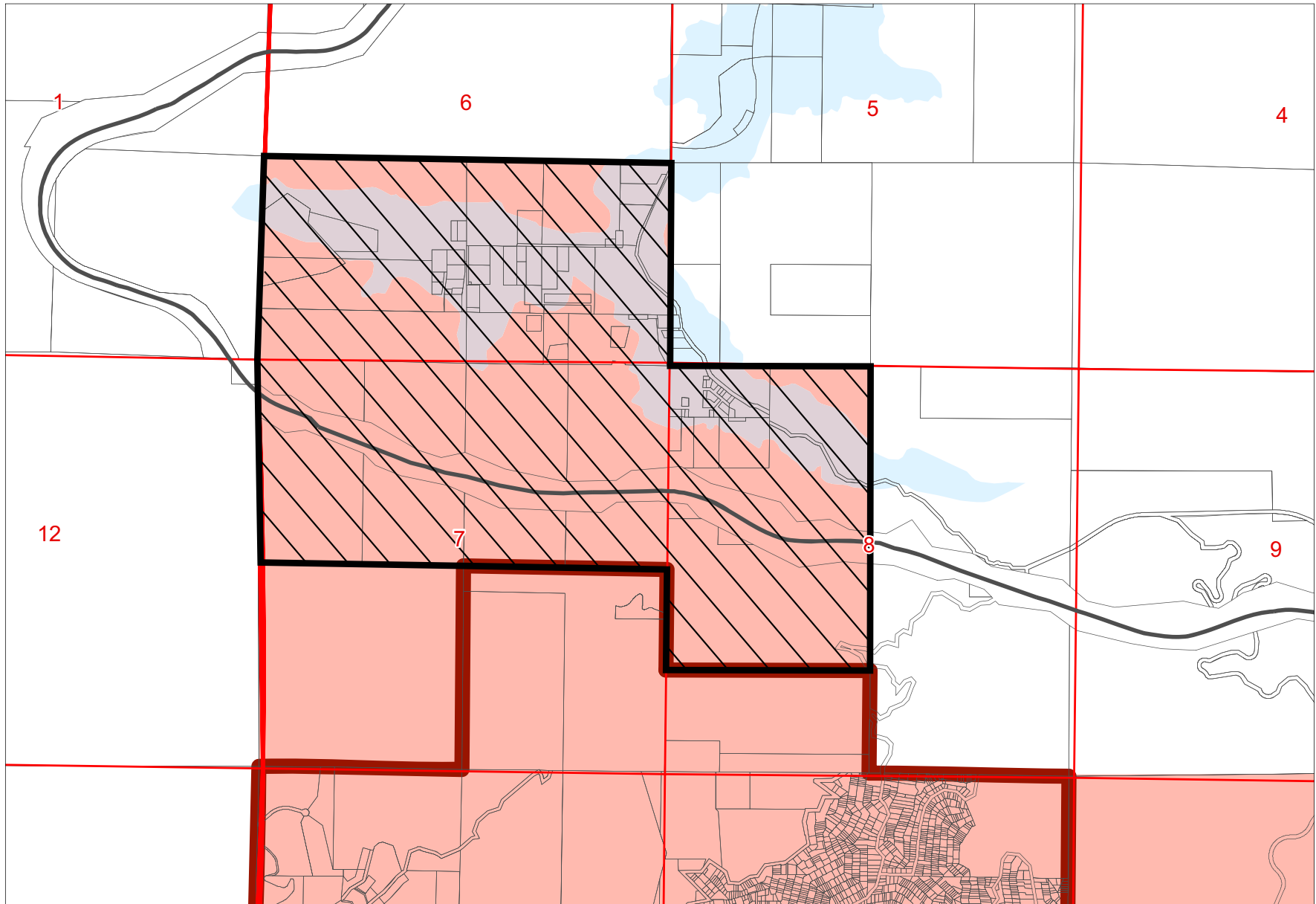


**LAFCO 3133 – SERVICE REVIEW AND SPHERE OF INFLUENCE
UPDATE FOR CRESTLINE SANITATION DISTRICT**

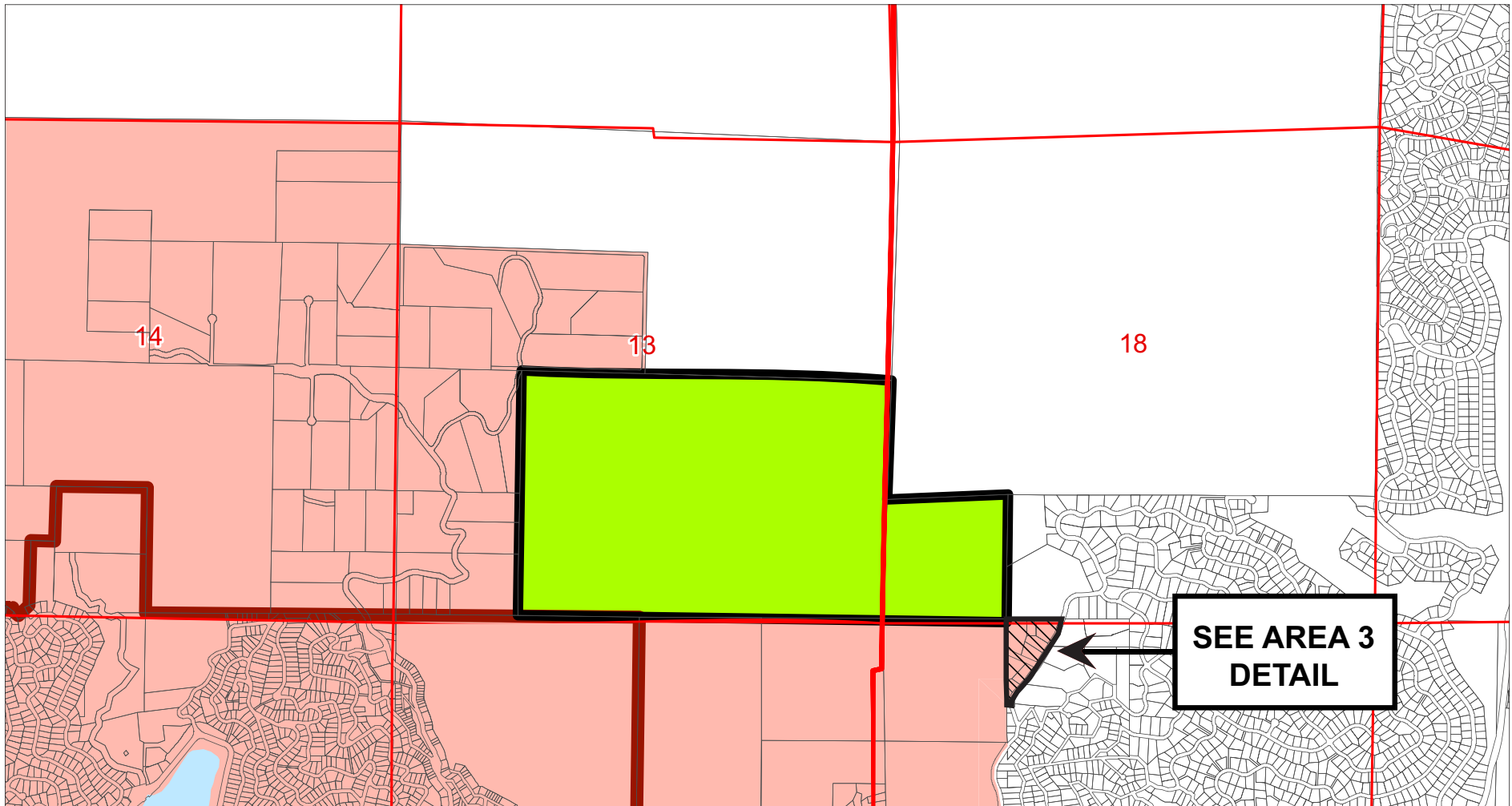


LAFCO 3133 - SPHERE OF INFLUENCE MODIFICATIONS (EXPANSIONS/REDUCTIONS) FOR CRESTLINE SANITATION DISTRICT

AREA 1 - Sphere Reduction for Crestline Sanitation District

Portions of Section 6, 7, and 8, Township 2 North, Range 4 West, San Bernardino Meridian, containing 880 acres, more or less.

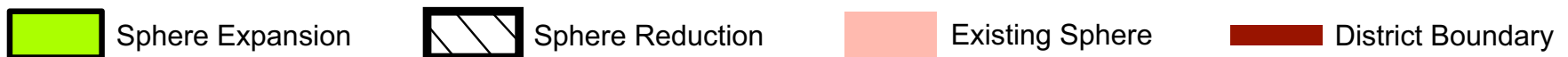


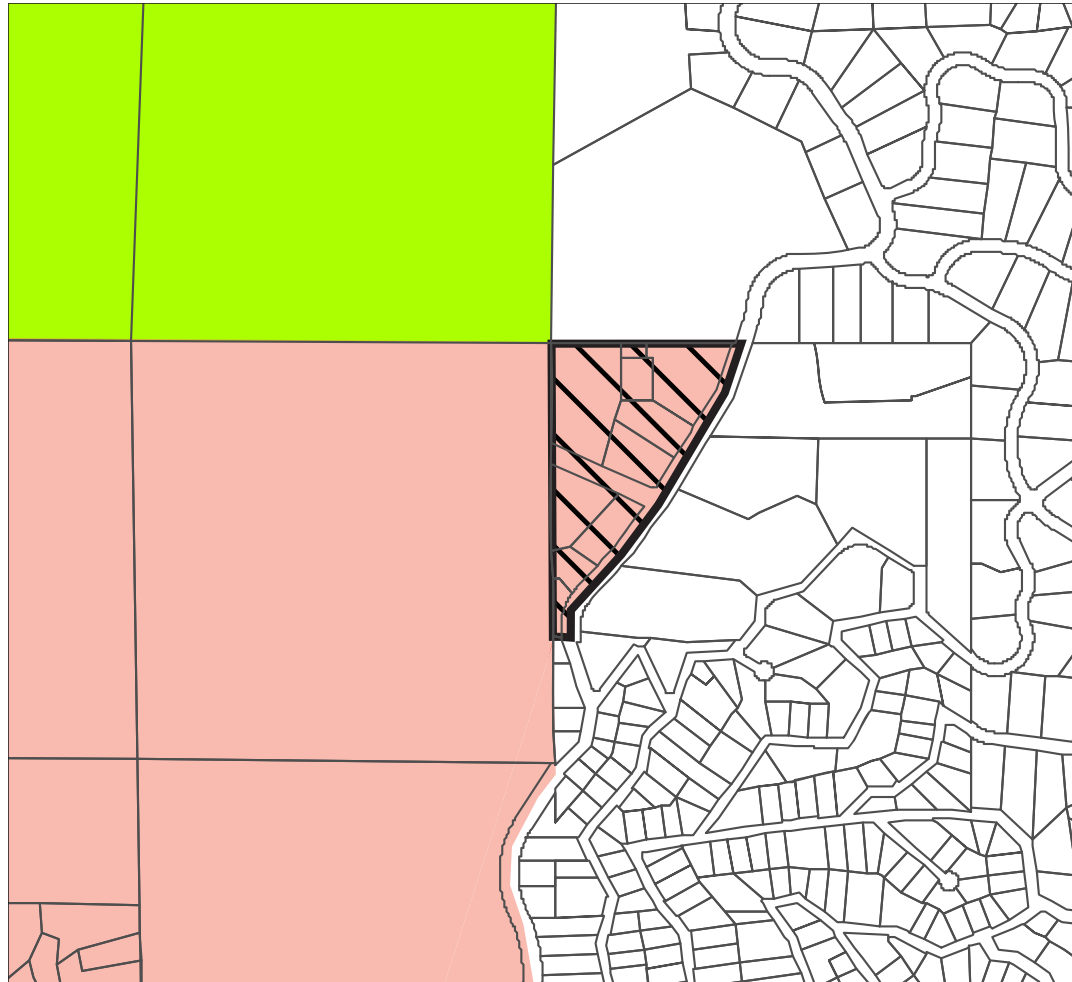


LAFCO 3133 - SPHERE OF INFLUENCE MODIFICATIONS (EXPANSIONS/REDUCTIONS) FOR CRESTLINE SANITATION DISTRICT

AREA 2 - Sphere Expansion for Crestline Sanitation District

Portion of Section 13, Township 2 North, Range 4 West, and portion of Section 18, Township 2 North, Range 3 West, San Bernardino Meridian, containing 280 acres, more or less.



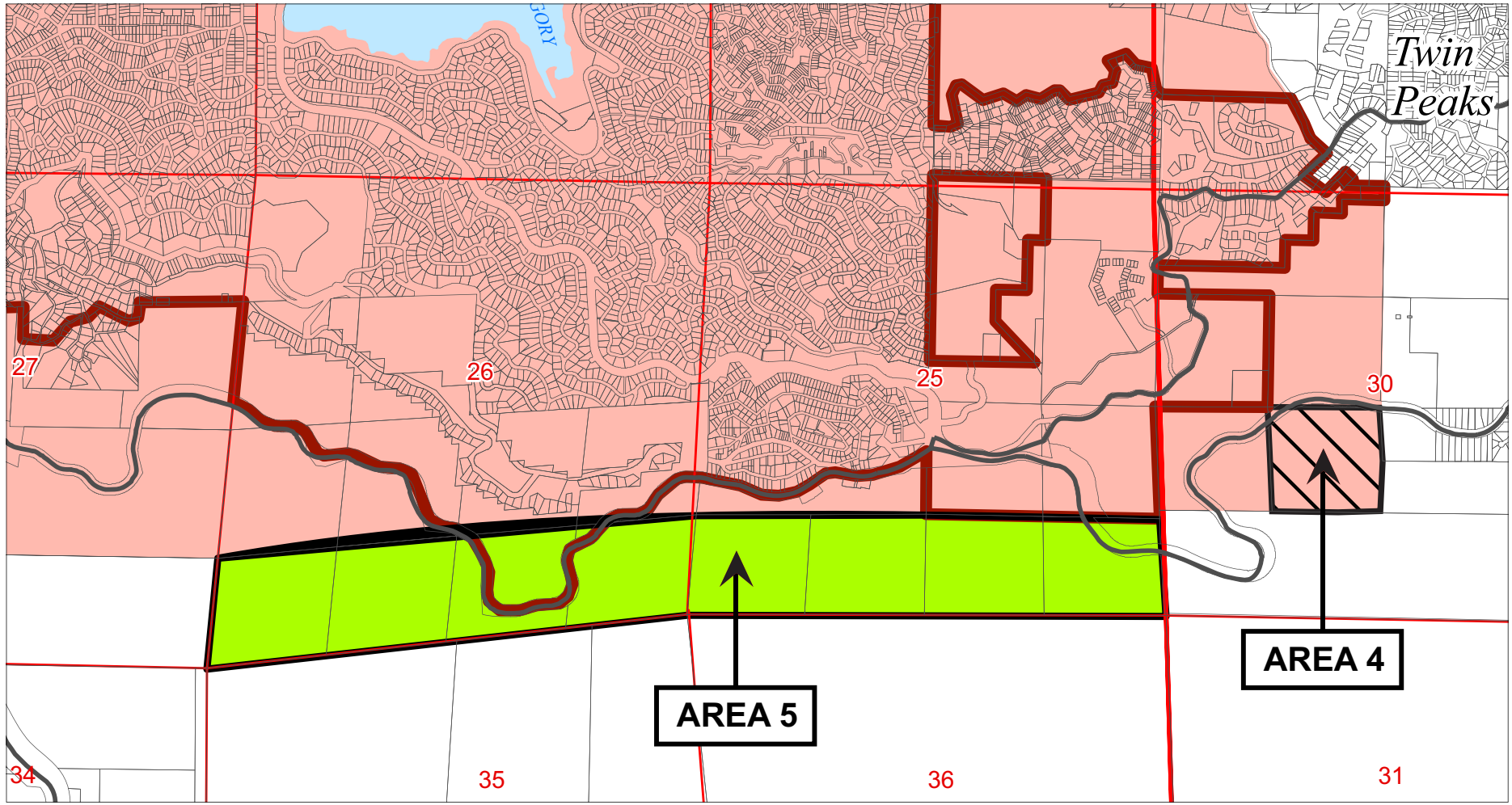


LAFCO 3133 - SPHERE OF INFLUENCE MODIFICATIONS (EXPANSIONS/REDUCTIONS) FOR
CRESTLINE SANITATION DISTRICT

AREA 3 - Sphere Reduction for Crestline Sanitation District

Portion of Section 19, Township 2 North, Range 3 West, San Bernardino Meridian, containing 8.05 acres, more or less.





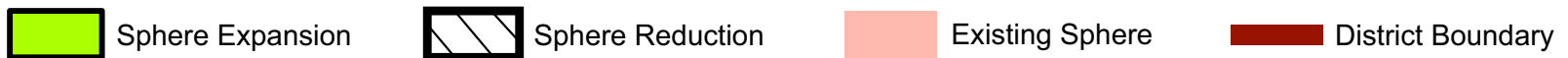
LAFCO 3133 - SPHERE OF INFLUENCE MODIFICATIONS (EXPANSIONS/REDUCTIONS) FOR CRESTLINE SANITATION DISTRICT

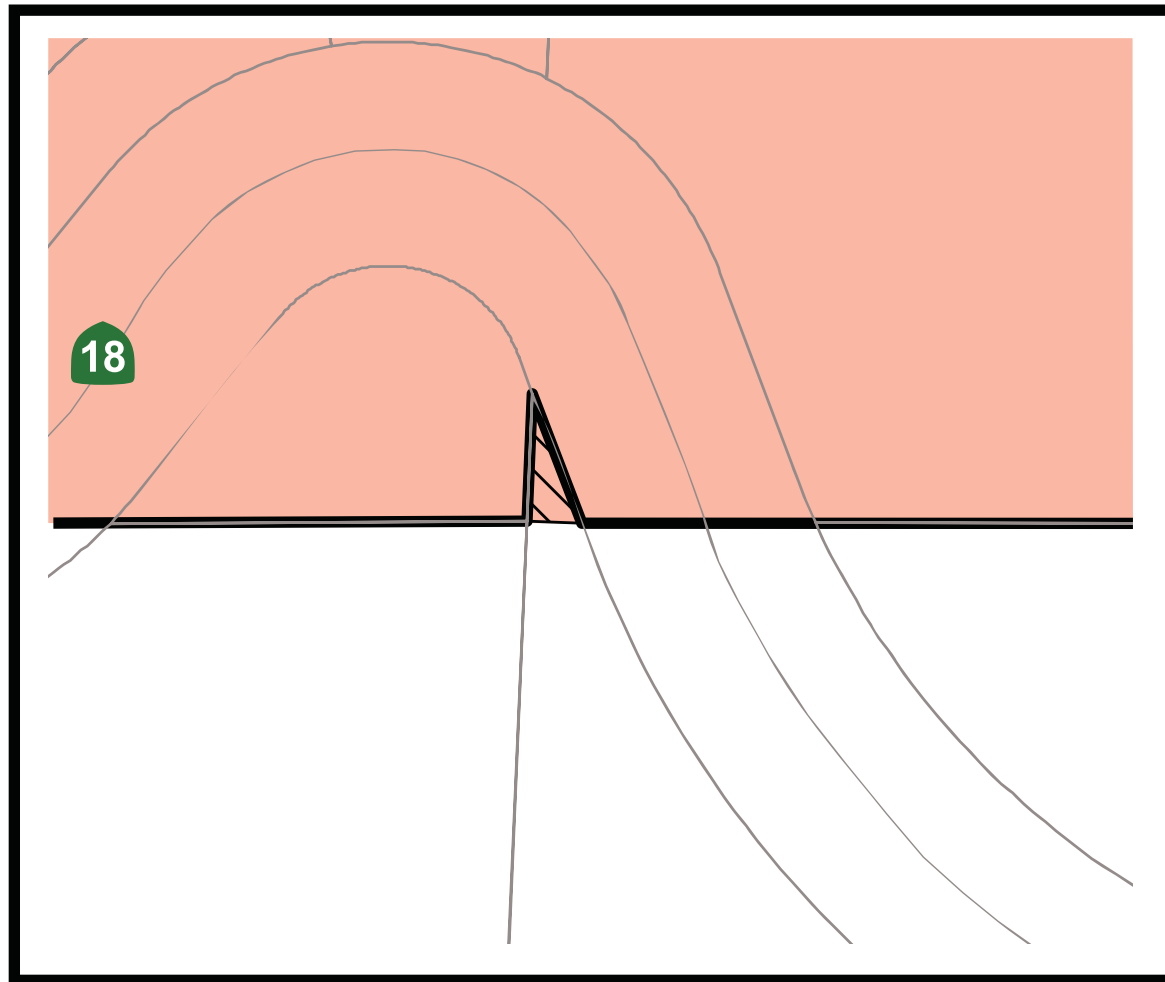
AREA 4 - Sphere Reduction for Crest Forest Fire Protection District

Portion of Section 30, Township 2 North, Range 3 West, San Bernardino Meridian, containing 40 acres, more or less.

AREA 5 - Sphere Expansion for Crest Forest Fire Protection District

Portions of Section 25 and 26, Township 2 North, Range 4 West, San Bernardino Meridian, containing 320 acres, more or less.





LAFCO 3133 - SPHERE OF INFLUENCE MODIFICATIONS (EXPANSIONS/REDUCTIONS) FOR
CRESTLINE SANITATION DISTRICT

AREA 6 - Sphere Reduction for Crestline Sanitation District

Portion of Section 27, Township 2 North, Range 4 West, San Bernardino Meridian, containing 0.25 acres, more or less.

Exhibit A



Sphere Expansion



Sphere Reduction

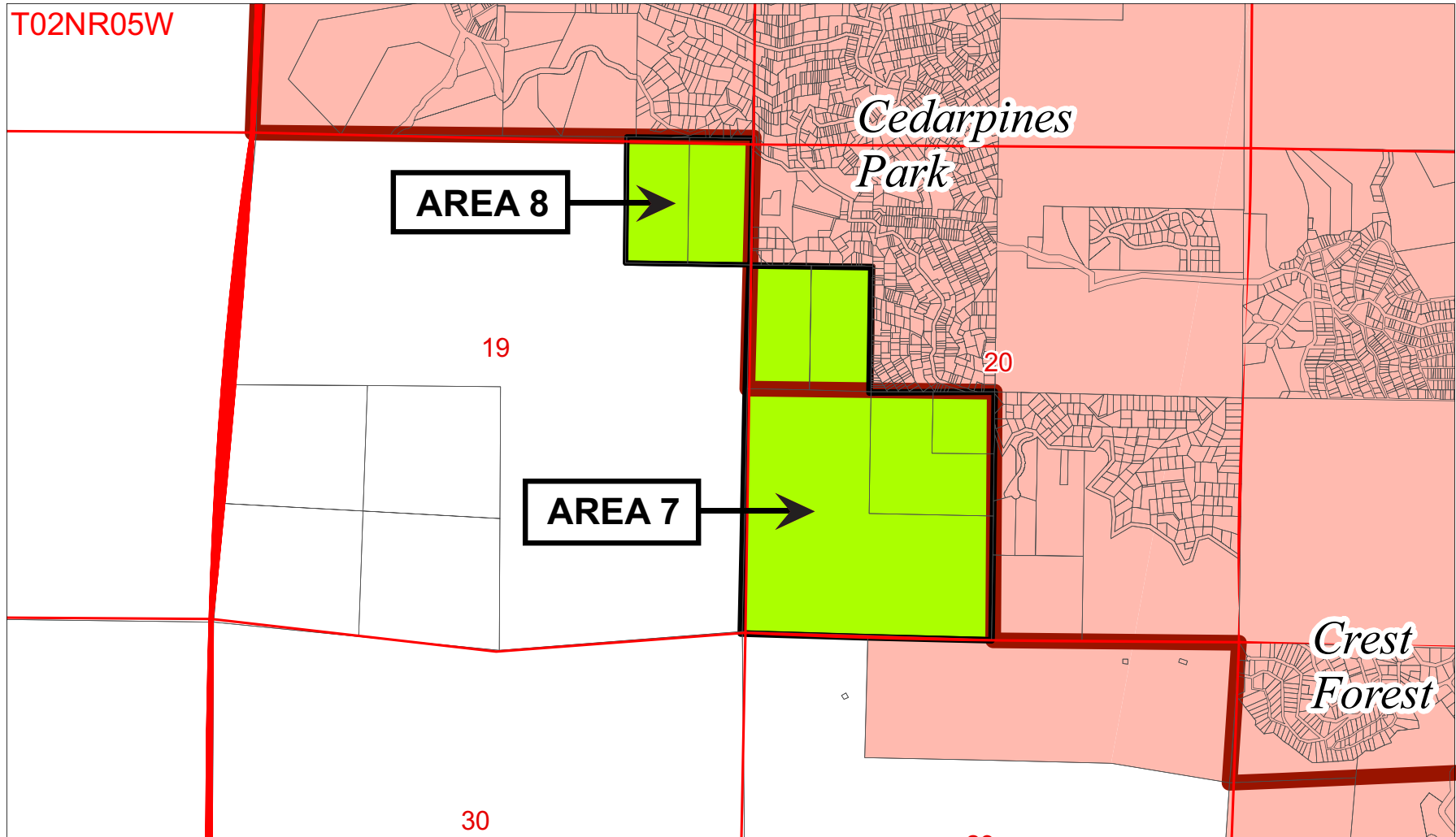


Existing Sphere



District Boundary

Exhibit A



LAFCO 3133 - SPHERE OF INFLUENCE MODIFICATIONS (EXPANSIONS/REDUCTIONS) FOR CRESTLINE SANITATION DISTRICT

AREA 7 - Sphere Expansion for Crestline Sanitation District

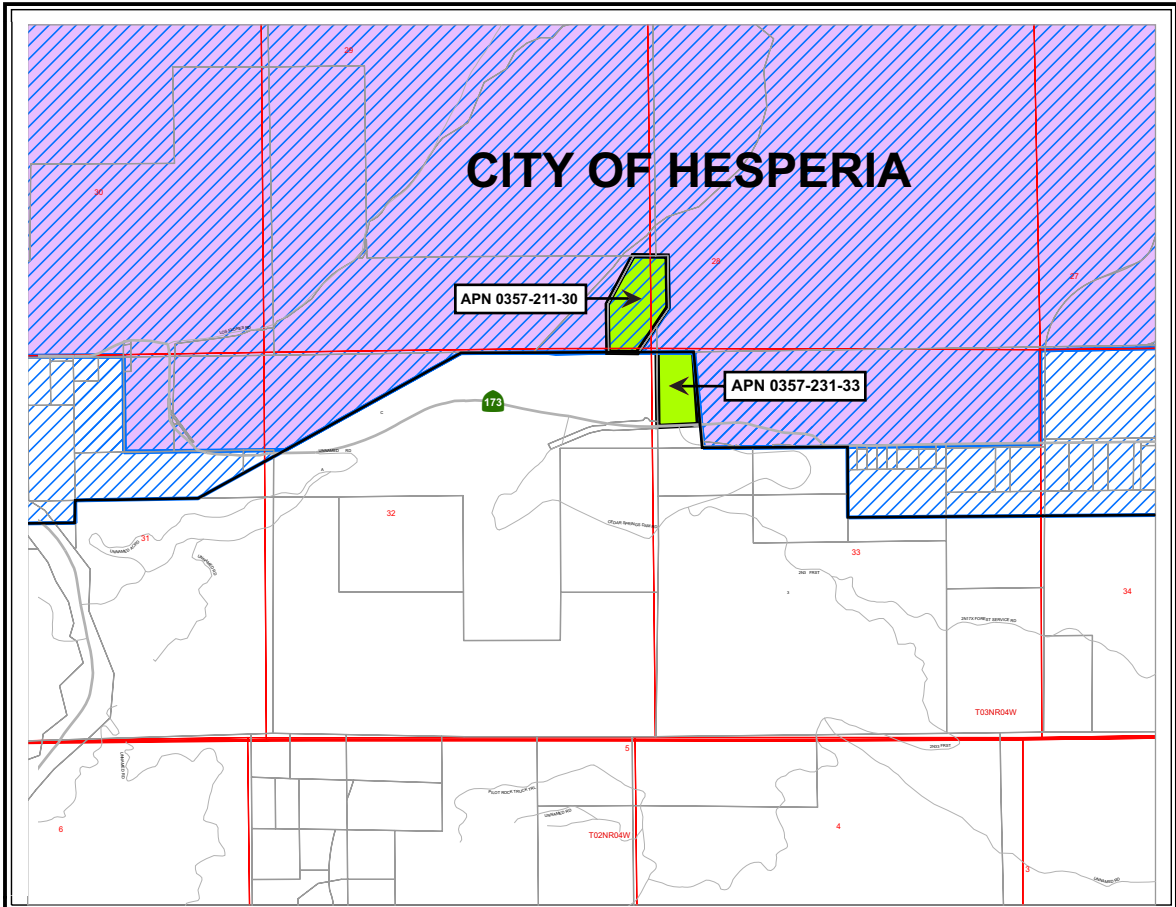
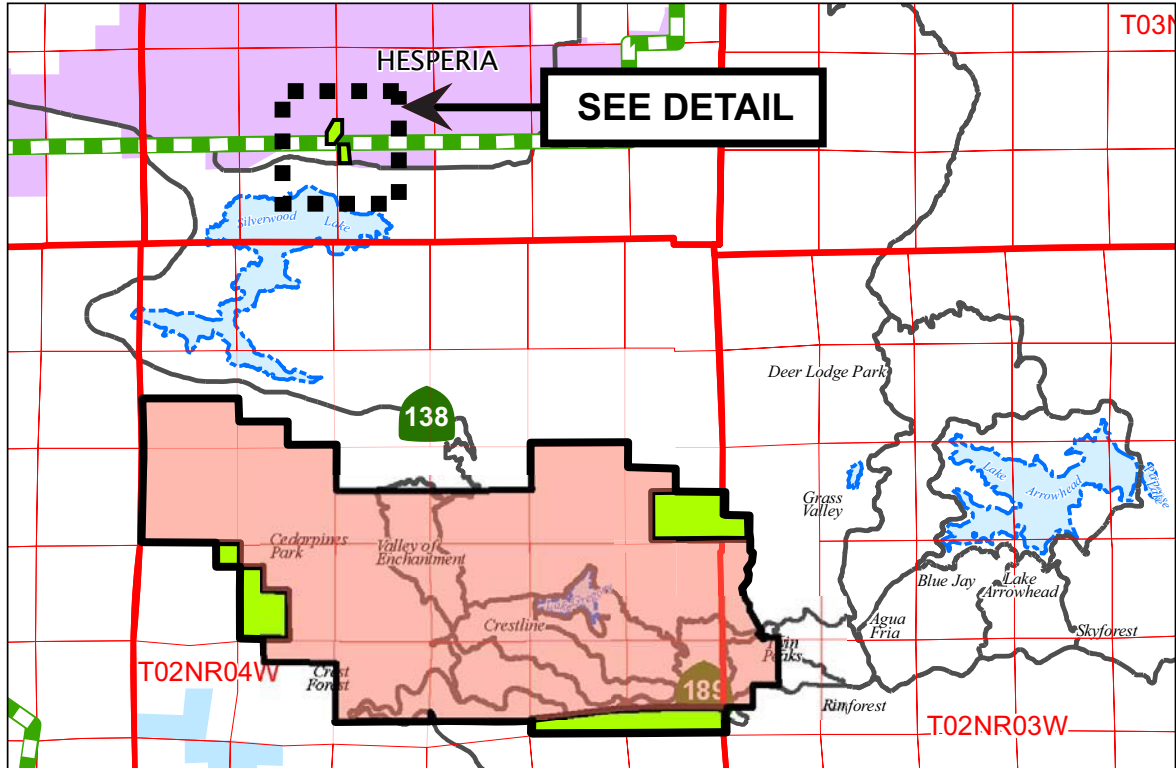
Portion of Section 20, Township 2 North, Range 4 West, San Bernardino Meridian, containing 200 acres, more or less

AREA 8 - Sphere Expansion for Crestline Sanitation District

Portion of Section 19, Township 2 North, Range 4 West, San Bernardino Meridian, containing 40 acres, more or less.



MAP 8 OF 8



LAFCO 3133 - SPHERE OF INFLUENCE MODIFICATIONS (EXPANSIONS/REDUCTIONS) FOR CRESTLINE SANITATION DISTRICT

Sphere Expansion for Crestline Sanitation District to Include Two District-Owned Properties Adjacent to the City of Hesperia (Assessor Parcel Numbers 0357-211-30 & 0357-231-33)

Portion of Sections 28, 29, and 33, Township 3 North, Range 4 West, and portion of Section 18, Township 3 North, Range 4 West, San Bernardino Meridian, containing 32.2 acres, more or less.

