

**LOCAL AGENCY FORMATION COMMISSION
COUNTY OF SAN BERNARDINO**

175 West Fifth Street, Second Floor
San Bernardino, CA 92415-0490 • (909) 387-5866 • FAX (909) 387-5871
E-MAIL: lafco@lafco.sbcounty.gov
www.sbclafco.org

PROPOSAL NO.: LAFCO 2918

HEARING DATE: FEBRUARY 18, 2004

RESOLUTION NO. 2804

A RESOLUTION OF THE LOCAL AGENCY FORMATION COMMISSION OF THE COUNTY OF SAN BERNARDINO MAKING DETERMINATIONS ON LAFCO 2918, A SERVICE REVIEW AND SPHERE OF INFLUENCE ESTABLISHMENT FOR THE RIVERSIDE-CORONA RESOURCE CONSERVATION DISTRICT (a sphere of influence establishment to include the existing area within the boundaries of the Riverside-Corona Resource Conservation District within San Bernardino County).

On motion of Commissioner Biane, duly seconded by Commissioner Pearson and carried, the Local Agency Formation Commission adopts the following resolution:

WHEREAS, a service review mandated by Government Code Section 56430, and a sphere of influence update mandated by Government Code Section 56425 have been conducted by the Local Agency Formation Commission of the County of San Bernardino (hereinafter referred to as "the Commission") in accordance with the Cortese-Knox-Hertzberg Local Government Reorganization Act of 2000 (Government Code Sections 56000 et seq.); and,

WHEREAS, at the times and in the form and manner provided by law, the Executive Officer has given notice of the public hearing by this Commission on this matter; and,

WHEREAS, the Executive Officer has reviewed available information and prepared a report including her recommendations thereon, the filings and report and related information having been presented to and considered by this Commission; and,

WHEREAS, the public hearing by this Commission was held on January 21, 2004, at the time and place specified in the notice of public hearing and in an order or orders continuing the hearing; and,

WHEREAS, at the hearing, this Commission heard and received all oral and written protests; the Commission considered all objections and evidence which were made, presented, or filed; and all persons present were given an opportunity to hear and be heard in respect to any matter relating to the review, in evidence presented at the hearing; and,

WHEREAS, a statutory exemption has been issued pursuant to the provisions of the California Environmental Quality Act (CEQA) indicating that this service review and sphere of influence establishment are statutorily exempt from CEQA and such exemption was adopted by this Commission at its January 21, 2004 hearing. The Clerk was directed to file a Notice of Exemption within five working days of adoption; and,

WHEREAS, based on presently existing evidence, facts, and circumstances filed with the Local Agency Formation Commission and considered by this Commission, it is determined that the sphere of influence for the Riverside-Corona Resource Conservation District shall be established to include its service area within San Bernardino County, as outlined on the map attached to this resolution; and,

WHEREAS, the following findings are made in conformance with Government Code Section 56430 and local Commission policy:

1. **Infrastructure Needs and Deficiencies.**

The District provides resource conservation services to the residents within its boundaries, which encompass approximately 9,000 +/- acres (approximately 14 square miles) within San Bernardino County. The District, as a whole, includes approximately 200,000 acres (312.5 square miles). The Riverside-Corona Resource Conservation District (RCD) does not currently provide for "infrastructure" as that term is commonly identified, but has indicated the need for the pursuit of its short- and long-range plans.

2. **Growth and Population.**

The District provides service to approximately 14 +/- square miles (approximately 9,000 acres) within its current boundaries in San Bernardino County which includes all of the City of Grand Terrace, portions of the Cities of Colton and San Bernardino and unincorporated areas within their sphere of influence. The establishment of the District's sphere of influence is proposed to maintain its existence within San Bernardino County but provides for no further expansion of its boundaries.

3. **Financing Opportunities and Constraints.**

The primary funding mechanisms for the District are:

- A share of the 1% general ad valorem levy (estimated at \$8,751 for FY 2003-04 from San Bernardino County)
- Grants
- Contracts for service.

The District has outlined, through adoption of its short- and long-range plans, the coordinated identification of resource projects and grant funding to pursue its plans. The establishment of the sphere of influence of the Riverside-Corona Resource Conservation District to include its current service boundaries allows for its continuing coordination of services with the National Resource Conservation Service, (NRCS), the Santa Ana Watershed Project Authority and others for its service area within San Bernardino and Riverside Counties.

4. **Cost Avoidance Opportunities.**

The District has indicated that it provides soil/water testing, erosion control and sedimentation, irrigation water management for residents, large turf and agriculture and habitat mitigation and restoration services that are not provided by any other jurisdiction. There are no known duplications of service within the District's boundaries since it maintains coordination and interaction with the agencies and entities serving within its boundaries.

5. **Rate Restructuring.**

As outlined above, the District's primary funding is derived from its share of the 1% general ad valorem tax levy, grants and contracts for service. The materials submitted to the Commission do not identify rates beyond these revenue sources.

6. **Opportunities for Shared Facilities.**

There are no other agencies that Riverside-Corona RCD could share facilities and resources with to develop a more efficient service delivery system. The District is currently operating out of a 10-acre facility in Riverside that subleases to other State agencies such as California Department of Food and Agriculture and California Department of Fish and Game.

7. **Government Structure Options.**

The State Legislature, through the California Public Resources Code Section 9000 et seq., recognizes the value of resource conservation through the creation of these entities charged with development of programs to maintain the viability of the State's natural resources in cooperation with the Federal Government, the State, counties, cities, and other districts. The District has identified hurdles to consolidation/reorganization as the loss of its multi-county status which impacts its share of the general ad valorem property tax and the possibility that too large an agency would be unable to manage the resources efficiently.

8. **Management Efficiencies.**

The District's track record has shown that public agencies and individuals benefit from its technical assistance. The District has numerous contracts to provide technical assistance since it can perform these function more cost effectively. The Western Municipal Water District and the City of Riverside contract with the District to provide irrigation water management evaluations within their jurisdictions and the City contracts to provide habitat restoration in some construction areas.

9. **Local Accountability and Governance.**

The District is governed by a five-member Board of Directors, who are either landowners or representatives of landowners within the District, appointed to a fixed

term of four years. The members of the Board of Directors of the Riverside-Corona Resource Conservation District are appointed by the Board of Supervisors for Riverside County, with one director and one associate director appointed to represent the Colton and Reche Canyon portion of San Bernardino County.

WHEREAS, the following findings are made in conformance with Government Code Section 56425 and local Commission policy:

1. The present and planned land uses in the area, including agricultural and open-space lands:

The present and planned land uses in the area comprising the existing boundaries of the Riverside-Corona Resource Conservation District represent varying levels and intensities of urban development. This area includes approximately 14 square miles (9,000 acres) within San Bernardino County, with the majority of the District within Riverside County. This portion of the San Bernardino Valley is transitioning from an agrarian economy to an urban one which has affected the types and levels of service delivered by the Resource Conservation Districts within it.

2. The present and probable need for public facilities and services in the area:

The transition of services provided by the Riverside-Corona Resource Conservation District to address the changing urban environment includes the provision of: watershed management, noxious weed eradication from waterways, sedimentation control, and the provision of educational programs within the classrooms of School Districts within its boundaries.

3. The present capacity of public facilities and adequacy of public services that the agency to be expanded provides or is authorized to provide:

Within its boundaries, the Riverside-Corona Resource Conservation District provides its services to its constituents limited by the resources available – its share of the 1% ad valorem property tax, grants, and contracts for services. An example of such services is outlined as follows: The District currently contracts with the Western Municipal Water District and the City of Riverside to provide irrigation water management evaluations and to provide habitat restoration services.

4. The existence of any social or economic communities of interest in the area.

Resource Conservation Districts are regional service providers defined by their principal act to service territory identified as: "Territory need not be contiguous but shall be under the provisions of the same general plan or system for the control of runoff, the prevention or control of soil erosion and the development and distribution of water or land improvement". Through the establishment of the sphere of influence for the Riverside-Corona Resource Conservation District, it will include the territory of the District's existing service area within San Bernardino County.

5. **OTHER FINDINGS**

- A. Notice of the January 21, 2004, hearing was published as required by law and directed by the Commission in: The Sun, the Inland Valley Daily Bulletin, and the Riverside Press Enterprise, newspapers of general circulation in the area. As required by state law, individual notification was provided to affected and interested local agencies, County departments, and those individuals wishing mailed notice.
- B. Comments from landowners and affected local agencies have been reviewed and considered by the Commission in making its determination; and,

WHEREAS, the following functions and services are provided by the District, as outlined in the Rules and Regulations affecting the functions and services of Special Districts (originally adopted on November 10, 1976); and Exhibit "A" of the Rules and Regulations lists each special district and its services and functions pursuant to the requirements of Section 6 of the Rules and Regulations; and,

WHEREAS, the Local Agency Formation Commission of the County of San Bernardino is required to review and update the Exhibit "A" of the Rules and Regulations of Special Districts to outline the services provided by the Riverside-Corona Resource Conservation District:

SERVICE	FUNCTIONS
Resource Conservation	Control of runoff, prevention of soil erosion, development and distribution of water, and improvement of land capabilities

WHEREAS, pursuant to the provisions of Government Code Section 56425(h) the range of services provided by the Riverside-Corona Resource Conservation District is limited to those identified above, and such range of services shall not be changed unless approved by this Commission; and,

WHEREAS, having reviewed and considered the findings as outlined above, the Commission determines that the sphere of influence for the Riverside-Corona Resource Conservation District should be established to include its existing service area within San Bernardino County only. In addition, the Commission directs its staff to undertake a study of the Resource Conservation Districts within San Bernardino County, as a whole, to determine their continued viability given the fiscal crisis being experienced within San Bernardino County and the State of California.

NOW, THEREFORE, BE IT RESOLVED by the Local Agency Formation Commission of the County of San Bernardino, State of California, that this Commission shall consider the sphere of influence for the Riverside-Corona Resource Conservation District to be the area as

established, it being fully understood that establishment of such a sphere of influence is a policy declaration of this Commission based on existing facts and circumstances which, although not readily changed, may be subject to review and change in the event a future significant change of circumstances so warrants.

THIS ACTION APPROVED AND ADOPTED by the Local Agency Formation Commission of the County of San Bernardino by the following vote:

AYES: COMMISSIONERS: Bagley, Biane, Colven, Curatalo, Pearson, Williams Young

NOES: COMMISSIONERS: None

ABSENT: COMMISSIONERS: Smith (Curatalo voting in his stead)

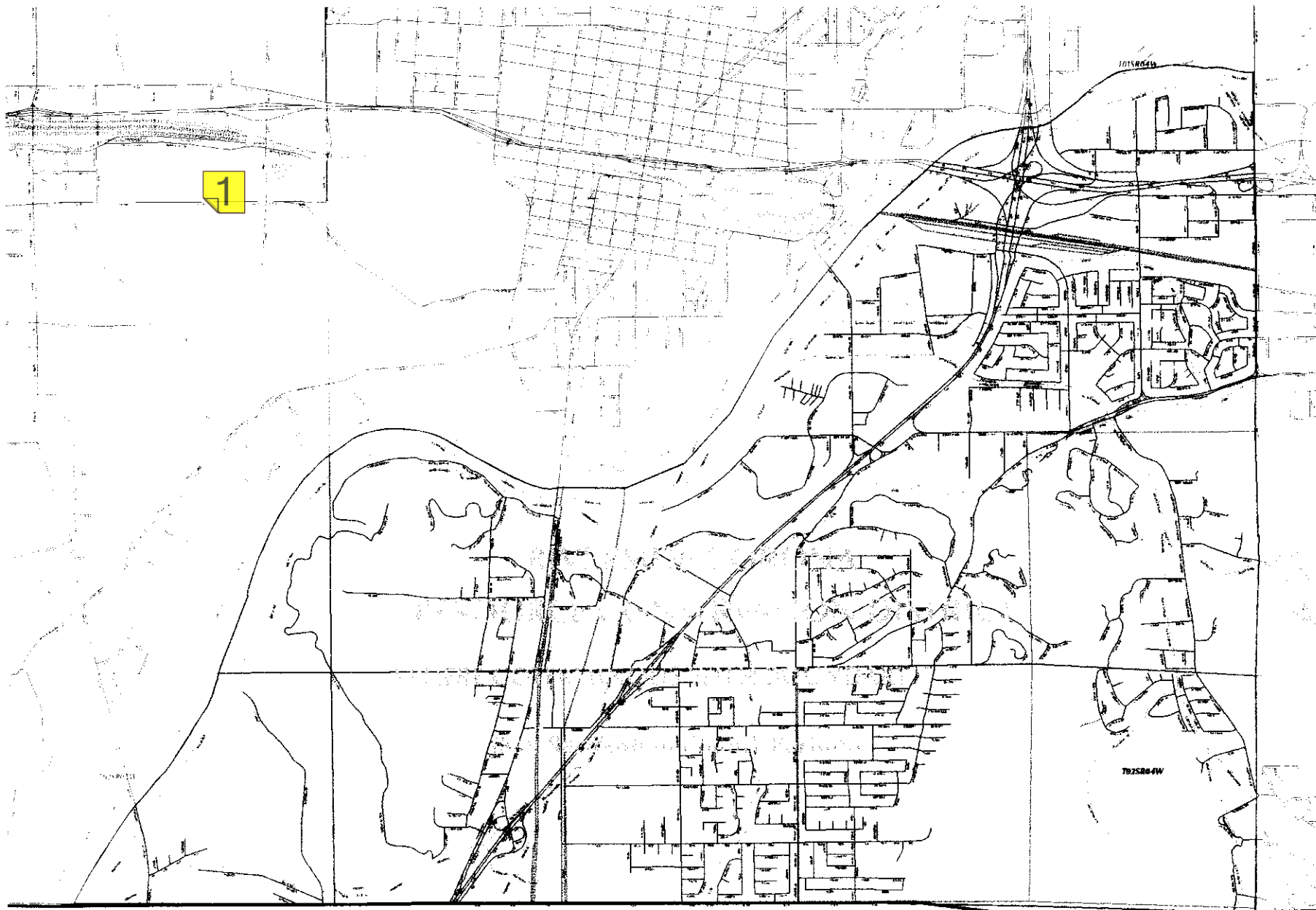
STATE OF CALIFORNIA)
) ss.
COUNTY OF SAN BERNARDINO)

I, KATHLEEN ROLLINGS-McDONALD, Executive Officer of the Local Agency Formation Commission of the County of San Bernardino, California, do hereby certify this record to be a full, true, and correct copy of the action taken by said Commission, by vote of the members present, as the same appears in the Official Minutes of said Commission at its meeting of February 18, 2004.

DATED: February 19, 2004

Kathleen Rollings McDonald
KATHLEEN ROLLINGS-McDONALD
Executive Officer





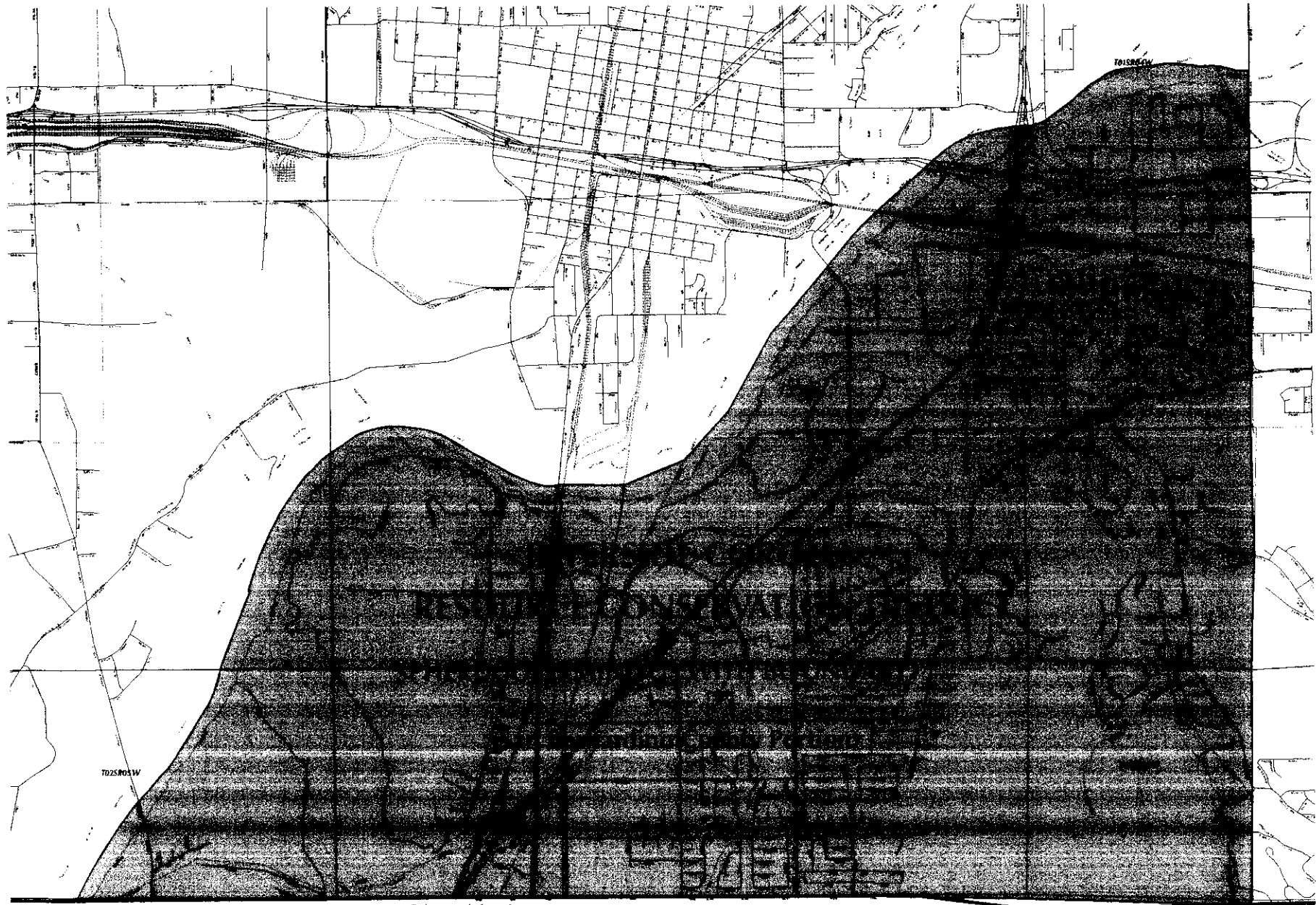
RIVERSIDE-CORONA RESOURCE CONSERVATION DISTRICT
 District & Sphere of Influence Boundaries

Map Prepared On: February 02, 2004

District and sphere of influence boundaries are current as of 1/1/04
 as they appear on a legal view of map on a digital base map. The official
 information is the local agency's database information as of 1/1/04.



North Arrow
 1:00000
 1:00000
 1:00000
 1:00000



Riverside-Corona Res. Con. Dist. Continues Into Riverside Co.

RIVERSIDE-CORONA RESOURCE CONSERVATION DISTRICT
 District & Sphere of Influence Boundaries

Map Prepared On February 02, 2004

District and sphere of influence boundaries are current as of 1/19/03

This map is not a legal representation of district boundaries. For additional information call the Local Agency Formation Commission (909) 387-3466



1. THIS AND FOLLOWING DOCUMENT ARE THE SAME BUT DIFFERENT BRIGHTNESS