

**LOCAL AGENCY FORMATION COMMISSION
COUNTY OF SAN BERNARDINO**

175 West Fifth Street, Second Floor
San Bernardino, CA 92415-0490 • (909) 387-5866 • FAX (909) 387-5871
E-MAIL: lafco@lafco.sbcounty.gov
www.sbclafco.org

DATE: NOVEMBER 7, 2003
FROM: KATHLEEN ROLLINGS-McDONALD, Executive Officer
TO: LOCAL AGENCY FORMATION COMMISSION

**SUBJECT: Agenda Item #7 — LAFCO 2916 -- Service Review and Sphere
Of Influence Update for the San Bernardino Valley Municipal
Water District**

INITIATED BY:

San Bernardino Local Agency Formation Commission

RECOMMENDATION:

1. Determine that LAFCO 2916 is statutorily exempt from environmental review, and direct the Clerk to file a Notice of Exemption within five days;
2. Make the findings related to a service review required by Government Code Section 56430; determine that the existing sphere of influence for the San Bernardino Valley Municipal Water District (SBVMWD) within San Bernardino County should be changed to accommodate the 8 +/- acres transferred to San Bernardino County through the County Boundary Exchange within the Agua Mansa area to be finalized as of December 1, 2003; and determine that the balance of the District's sphere of influence will be affirmed as presently configured;
3. Request that the Riverside Local Agency Formation Commission address the County Boundary Exchange within the Agua Mansa area as it relates to the sphere of influence of the SBVMWD within their County; and,
4. Adopt LAFCO Resolution #2791 setting forth the Commission's findings and determinations on this issue.

BACKGROUND INFORMATION:

This proposal was initiated by the Local Agency Formation Commission on January 15, 2003, in response to state mandates requiring service reviews and sphere of influence updates for all cities and special districts on a rotating five-year schedule. LAFCO 2916 is a routine, non-controversial service review and sphere of influence update for the SBVMWD. Included as Attachment #1 are maps which identify the boundaries and sphere of influence for SBVMWD and identify the relationship of the underlying water retailers and cities.

Attachment #2 to this report is a District Summary Profile Sheet and an excerpt from the response from the SBVMWD to the survey factors required by Government Code Section 56430 for a service review. A complete copy of the District's response is available for review in the LAFCO office along with the compact discs which hold the Regional Water Facilities Master Plan and its Environmental Impact Report. For the sake of brevity, the responses are not duplicated in this report, but are instead contained within the draft LAFCO Resolution #2791 which is included for Commission review as Attachment #5.

The primary function of the SBVMWD is to act as the State Water Contractor for the area to provide for long-range water supply planning for the eastern portion of the San Bernardino Valley and the water retailers within its boundaries. According to the District's website (www.sbvwmwd.com) it fulfills these responsibilities by importing water through the State Water Project for direct delivery and groundwater recharge.

In addition, the District is the court-appointed watermaster for the "Orange County" judgment which requires that SBVMWD become responsible for providing a specified Santa Ana River base flow to Orange County, as well as maintaining the "safe yield" and water levels in certain key wells. Under the terms of this adjudication, the area's water rights were established.

SBVMWD does not currently provide retail water service within its boundaries. However, in the early 60's and 70's, it did provide retail water service through its Improvement Districts "A", "B" and "C" within the Yucaipa area. When the Yucaipa Valley Water District was formed in 1971, the water retail responsibility was absorbed from Improvement District "A". The County Assessor has indicated that Improvement Districts "B" and "C" are still carried on the books as active even though they do not appear to perform a function at the present time.

The major points of consideration within the response provided by SBVMWD are the following:

1. The SBVMWD is not proposing any changes to its sphere of influence within San Bernardino County except to acknowledge the County Boundary Exchange within the Agua Mansa area recently approved by both the San Bernardino and Riverside County Boards of Supervisors (area outlined on maps included as Attachment #3). This boundary exchange proposes to place approximately 8 +/- acres into San Bernardino County from Riverside County, and transfer approximately 4 +/- acres to Riverside from San Bernardino.

The District indicates that it does not anticipate submission of any other sphere of influence amendments within the next five years. The document presented to the Commission indicates that a sphere of influence amendment would only be proposed if one of the District's underlying water retailers would request an annexation outside the boundaries of SBVMWD's sphere of influence. The County Boundary Exchange would fall under this directive.

2. When Special Districts were seated on the San Bernardino LAFCO in 1976, the listing of services and functions was prepared, as required by law, acknowledging the services actively provided by the special districts at that time. Through this process, SBVMWD is currently authorized the active services and functions as follows:

SERVICE	FUNCTIONS
Water	Wholesale, retail, agricultural, domestic, replenishment, conservation
Sewer	Collection, transportation, treatment, reclamation, disposal
Power	Generation, distribution
Electrical Production	
Electrical Transmission	
Park & Recreation	Development, operation, recreation (cannot perform the function within an existing agency with park and recreation services)

Latent powers are those authorized to a special district through its principal act, but which are not being actively provided. According to the SBVMWD's principal act, the Municipal Water District Act of 911 (Water Code Sections 71000 to 73000), the latent powers of the district are:

SERVICE	FUNCTIONS
Fire Protection	All functions of a Fire Protection District (except it cannot perform the function within an existing agency with fire protection services)
Stormwater	Capture, disposal
Refuse	Collection/disposal

It is noted that none of the adjacent or overlaying agencies have identified any concerns with the existing sphere of influence for the SBVMWD

CONCLUSION:

Based on the information outlined above and the response from the SBVMWD, staff recommends that the Commission modify the sphere of influence for the District to acknowledge the County Boundary Exchange within the Agua Mansa area, and uphold and affirm the balance of the existing sphere of influence for the District. In addition, staff recommends that the Commission adopt Resolution #2791 which sets forth written responses to the statutory factors related to service reviews and sphere of influence studies.

Staff also wishes to thank and commend the District for its responsive and thorough replies to the service review and sphere study factors of consideration.

KRM

Attachments:

1. Maps of the Existing Sphere of Influence of the San Bernardino Valley Municipal Water District
2. Summary District Profile Sheet and Excerpt from the Survey Response from the San Bernardino Valley Municipal Water District
3. Maps and Legal Descriptions of County Boundary Exchange within the Agua Mansa Area
4. Response from Tom Dodson and Associates
5. Draft Resolution #2791

**Maps of the Existing Sphere of
Influence of the San Bernardino
Valley Municipal Water District**

Attachment 1

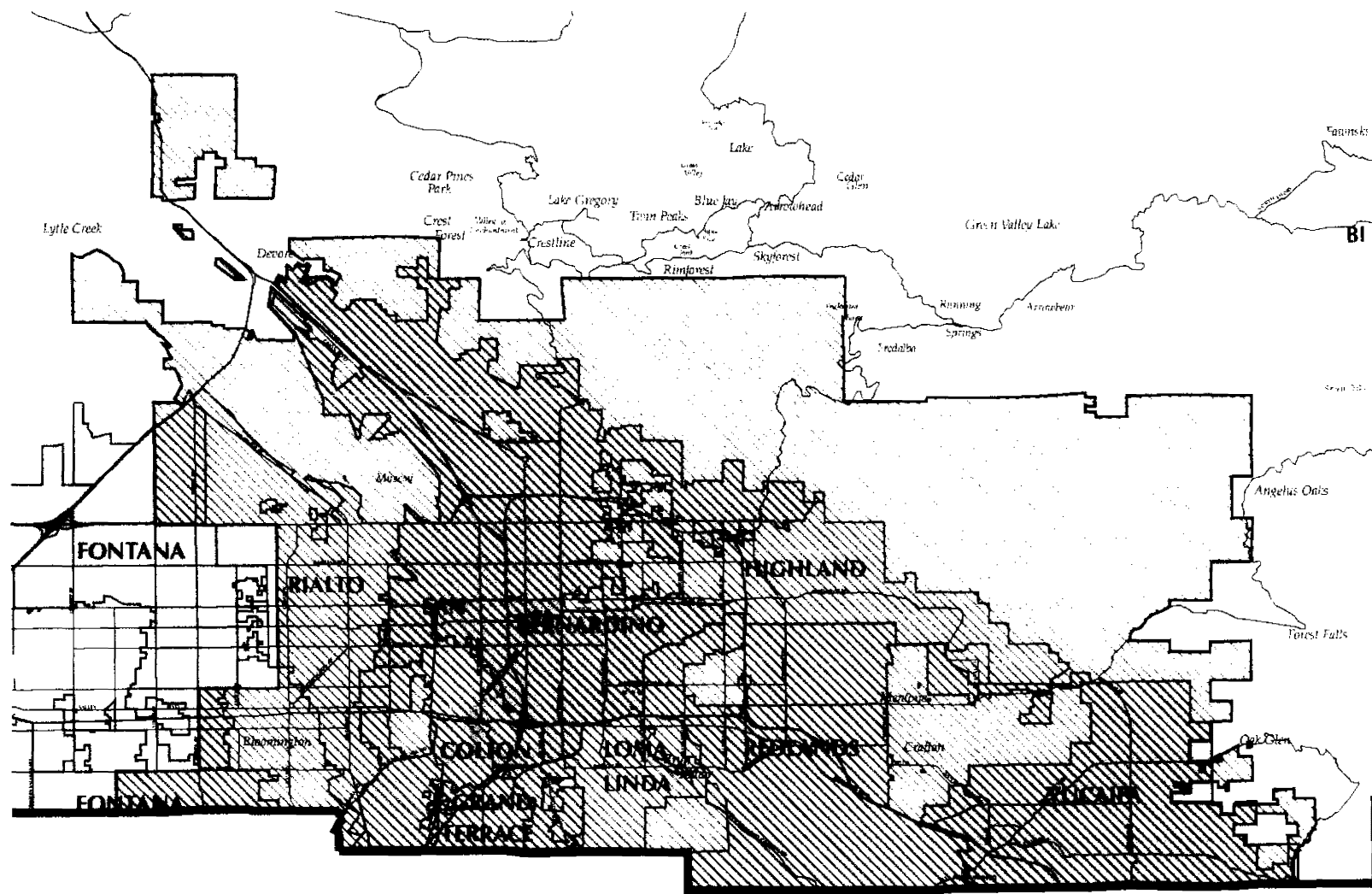


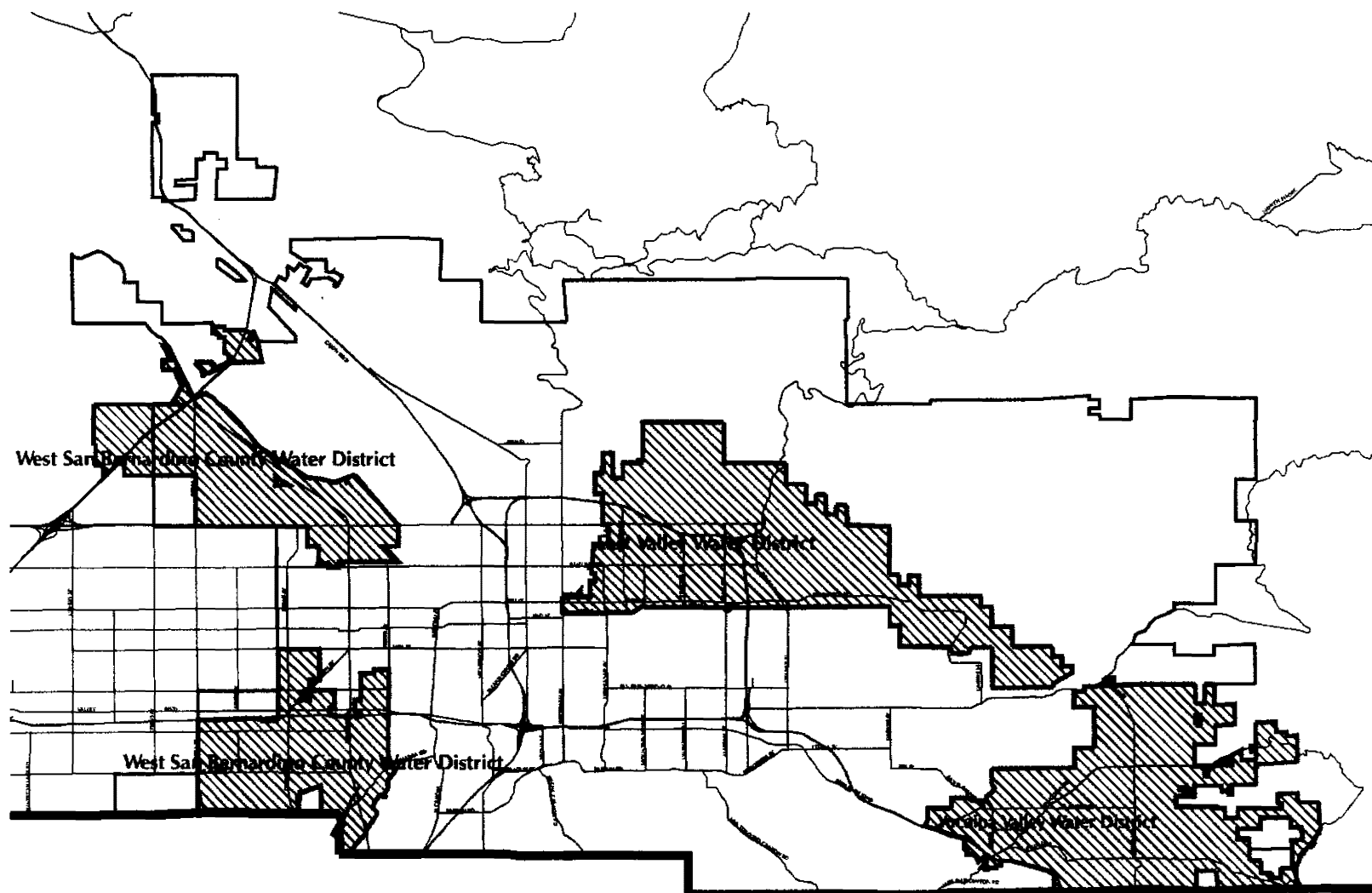
Map Prepared On November 06, 2003


 District Boundary


 District Sphere of Influence







 SBVMWD District Boundary

 Water District Boundaries



Map Prepared On November 06, 2003

**Summary District Profile Sheet
And Excerpt from the Survey
Response from the San
Bernardino Valley Municipal
Water District**

Attachment 2

SAN BERNARDINO VALLEY MUNICIPAL WATER DISTRICT

DISTRICT PROFILE SUMMARY SHEET

CONTACT PERSON: Robert Reiter, General Manager

STREET ADDRESS: 1350 South "E" Street
San Bernardino
Phone: (909) 387-9200
Fax: (909) 387-9247

MAILING ADDRESS: P.O. Box 5906
San Bernardino, CA 92412-5906

E-MAIL ADDRESS: webmaster@sbvmwd.com
WEBSITE LOCATION: www.sbvmwd.com

DATE OF FORMATION: January 26, 1954

PRINCIPAL ACT:
Municipal Water District Act of 1911, Water Code Sections 71000 through 73000

IMPROVEMENT DISTRICTS: XX YES NO

If yes, please indicate name and define area and service provided: Improvement Districts "B" and "C" within the general Yucaipa area. These improvement districts have no active services at the present time.

GOVERNING BODY/MEMBERSHIP: Five Member Board of Directors elected from divisions. Divisions adjusted following each census.

Edward B. Killgore	Division I
George Aguilar	Division II
C. Patrick Milligan	Division III
Mark Bulot	Division IV
Steve Copelan	Division V

PUBLIC MEETINGS: First and Third Mondays of every month at 2:00 p.m.
in the District's headquarters, 1350 South "E" Street

SERVICES PROVIDED:

SERVICE	FUNCTIONS
Water	Wholesale, retail, agricultural, domestic, replenishment, conservation
Sewer	Collection, transportation, treatment, reclamation, disposal
Power	Generation, distribution
Electrical Production	
Electrical Transmission	
Park & Recreation	Development, operation, recreation

LATENT POWERS (SERVICES): Those services authorized by the Agency's principal act and/or formation documents, but not activated through the LAFCO process:

SERVICE	FUNCTIONS
Fire protection	All functions of a Fire Protection District (except it can not perform the function within an existing agency with fire protection services)
Stormwater	Capture, disposal
Refuse	Collection/disposal

AREA SERVED 325 square miles/208,000 acres

POPULATION Estimated at 576,000 currently; projected population as of 2025 is 973,000

SPHERE OF INFLUENCE:

ESTABLISHED:

LAFCO NUMBER	RESOLUTION NO./ DATE ADOPTED	LOCATION
LAFCO 1301	January 17, 1973	

CHANGES:

LAFCO NUMBER	RESOLUTION NO./ DATE ADOPTED	TYPE OF CHANGE	LOCATION
None			

SPECIAL AREAS OF CONCERN:

Resolution of water transfer issues between State Contract providers. This relates to the prohibition within the State Water Project contracts for the unauthorized delivery of water from one contractor's service area into another. This type of situation was resolved through the "four-party" agreement in the North Fontana area. Additional areas of concern are in the Agua Mansa/South Fontana (Metropolitan Water District and SBVMWD) area; and the Yucaipa-Calimesa area (San Geronio Pass Water Agency, Yucaipa Valley Water District, Beaumont-Cherry Valley Water District and SBVMWD).

LOCAL AGENCY FORMATION COMMISSION COUNTY OF SAN BERNARDINO

175 West Fifth Street, Second Floor, San Bernardino, CA 92415-0490
• (909) 387-5866 • FAX (909) 387-5871
E-MAIL: lafco@lafco.sbcounty.gov
www.sbclafco.org

MUNICIPAL WATER DISTRICT (Water Code Sections 71000 through 73000)

WHAT IS A MUNICIPAL WATER DISTRICT?

Municipal Water District law was originally enacted in 1911 to provide for a means of distributing, treating, and recapturing water within the boundaries of these agencies. In San Bernardino County, some Municipal Water Districts provide for the regional distribution of state water project resources and repayment of the bonds issued for the state water project system among their other functions.

WHO GOVERNS A MUNICIPAL WATER DISTRICT?

The governing body of a Municipal Water District is a five member Board of Directors elected from within divisions of the District. At the time of formation, the District is divided into these five divisions and the Directors must be registered voters within their respective Division.

WHAT KINDS OF SERVICES CAN A MUNICIPAL WATER DISTRICT PROVIDE?

A Municipal Water District can provide one, or any combination of, the following services:

- Acquire, control, distribute, store, spread, sink, treat, purify, reclaim, recapture, and salvage any water, including sewage and storm waters, for the beneficial use or uses of the District, its inhabitants or the owners of rights to water in the district.
- Construct, maintain, improve and operate public recreational facilities appurtenant to facilities operated or contracted to be operated by the District.

- May utilize any part of its water, and any part of its works, facilities, improvements, and property used for the development, storage, and transportation of water to provide, generate, and deliver hydroelectric power; and may acquire, construct, operate and maintain any and all works, facilities, improvements, and property necessary or convenient for such utilization.
- Acquire, construct, and operate facilities for the collection, treatment, and disposal of sewage, waste, and storm water of the district and its inhabitants.
- A district may exercise any of the powers, functions and duties vested in or imposed upon a fire protection district commencing with Section 13800 of the Health and Safety Code, except that it will have no such authority for areas currently within an agency providing fire protection services unless the district has obtained the consent of the other local agency.
- Acquire, construct, and operate facilities for, or may contract with others for the collection and disposal of garbage, waste, and trash of the district and its inhabitants. A district may not engage in, or contract with others for the collection and disposal of garbage, waste, and trash in competition with any existing county franchise for the collection and disposal of garbage, waste, and trash.
- Acquire waterworks or a waterworks system, waters, water rights, lands, rights, and privileges; construct, maintain, and operate conduits, pipelines, reservoirs, works, machinery, and other property useful or necessary to store, convey, supply or otherwise make use of water for a waterworks plant or system for the benefit of the district.

In addition to the above "general" services, an existing Municipal Water District can request that the State authorize through passage of special legislation other services to meet a specific community need. For example, the Big Bear Municipal Water District has received special authorization to "construct, maintain, improve, and operate public recreational facilities which are not appurtenant to a water reservoir operated by the District when approved by the voters of the District (Section 71661).

HOW CAN YOU BE ANNEXED INTO (INCLUDED WITHIN) AN EXISTING MUNICIPAL WATER DISTRICT?

A Municipal Water District's boundaries can be expanded to include additional territory within its sphere of influence which is:

- Contiguous or non-contiguous territory;

- Unincorporated territory; or
- An undivided city

Proceedings for the annexation process are handled under the provisions of the Cortese-Knox-Hertzberg Local Government Reorganization Act of 2000 (Govt. Code Section 56000 et. seq.) which is administered by the Local Agency Formation Commission.

Sphere of Influence/Service Review

San Bernardino Valley Municipal Water District

A Multi-County Water District Serving Portions of San Bernardino and Riverside Counties



April 2003

Prepared for



Local Agency Formation Commission
County of San Bernardino

Sphere of Influence/Service Review
San Bernardino Valley Municipal Water District

Table of Contents

INTRODUCTION.....	2
CHAPTER 1. SPHERE OF INFLUENCE	3
CHAPTER 2. SERVICE REVIEW ISSUES	4
I. Infrastructure Needs and Deficiencies	4
II. Growth and Population	8
III. Financing Opportunities and Constraints.....	10
IV. Cost Avoidance Opportunities	12
V. Rate Restructuring.....	13
VI. Opportunities for Shared Facilities.....	14
VII. Government Structure Options	15
VIII. Evaluation of Management Efficiencies.....	15
IX. Local Accountability and Governance	16
APPENDIX	18

Introduction

Pursuant to Government Code Sections 56435 and 56430, San Bernardino Valley Municipal Water District (District) submits this Sphere of Influence and Service Review for use by the Local Agency Formation Commission (LAFCO).

This report responds to the specific questions provided to the District by LAFCO.

Sphere of Influence

Does your agency anticipate any sphere of influence amendments that might be proposed over the next five years?

The District does not have any plans to expand its sphere of influence within the next five years. However, any land annexed outside the District's current boundary by one of the retail water agencies within the District requires concurrent annexation by the District. Should said land be outside of the District's current sphere of influence, a sphere of influence amendment would also be necessary.

Service Review Issues

I. Infrastructure Needs and Deficiencies

***Purpose:** To evaluate the infrastructure needs and deficiencies of a jurisdiction in terms of capacity, condition of facility, service quality and levels of services and its relationship to existing and planned service users.*

Master Service Plans/Studies
Water Service Plans/Studies

The District has completed a Regional Water Facilities Master Plan (Master Plan) and an Environmental Impact Report (EIR) for the Master Plan. Complete copies of the Master Plan and EIR are included in Appendix A.

In addition, the District is currently in the process of obtaining a water right to Santa Ana River water conserved by Seven Oaks Dam. The District's application for this water is scheduled to be heard by the State Water Resources Control Board in 2004.

Age and condition of facilities

Table 1. Age and condition of District facilities.

Facility	Year Constructed	Age	Condition
Lytle Creek Pipeline (capacity only)	1972	31	GOOD
Foothill Pipeline - Phase 1	1973	30	GOOD
Foothill Pipeline - Phase 2	1977	26	GOOD
SARC Pipeline	1985	18	GOOD
Morton Canyon Connector	1985	18	GOOD
Greenspot Pipeline	1983	20	GOOD
Greenspot Pipeline - Phase 2	1985	18	GOOD
Greenspot Pipeline - Phase 3	1987	16	GOOD
Tate Pipeline	1987	16	GOOD

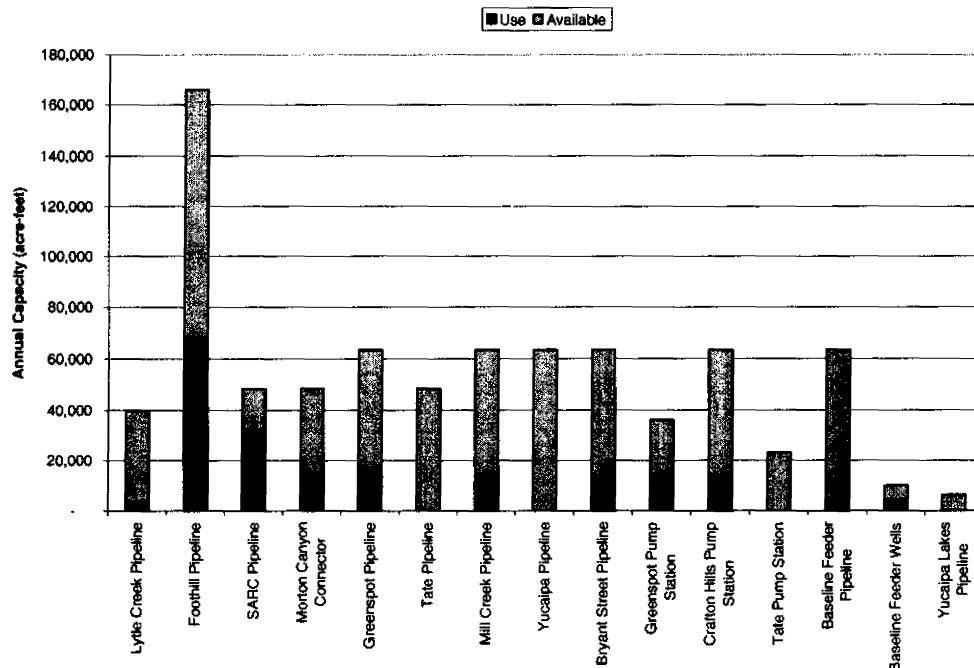
Facility	Year Constructed	Age	Condition
Mill Creek Pipeline	2003	NEW	EXCELLENT
Yucaipa Pipeline	1987	16	GOOD
Bryant Street Pipeline	2003	NEW	EXCELLENT
Greenspot Pump Station ¹	2003	NEW	EXCELLENT
Crafton Hills Pump Station ¹	2003	NEW	EXCELLENT
Crafton Hills Reservoir	2003	NEW	EXCELLENT
Tate Pump Station	1987	16	GOOD
Baseline Feeder Pipeline	1991	12	GOOD
Baseline Feeder Wells	1991	12	GOOD
Yucaipa Lakes	1981	22	GOOD
Yucaipa Lakes Pipeline	1979	24	GOOD

¹Facility owned by the California Department of Water Resources but operated and maintained by the District.

Capacity Analysis

Most of the District's existing facilities have been designed to meet the ultimate demands for the 352 square mile service area. Since the District's service area has not reached ultimate buildout, there is still available capacity in the District's facilities. The chart below provides an overview of the estimated available capacity in District facilities.

Figure 1. Estimated available capacity in District facilities.



Future Demand

The District's water budget is presented in Table 2. Based on current predictions, the District will have a shortfall of nearly 66,000 acre-feet. This shortfall will have to be offset by reducing demand through conservation or other measure(s).

Table 2. District water budget.

SBVMWD Water Budget (rev. 4-10-03)		Ultimate Average Year	
Water Supplies		acre-feet/year	
Groundwater			
San Bernardino Basin			
Safe Yield (Groundwater and Surface Water)	232,100		
Plaintiffs (WMWD)			
City of Riverside	(52,199)		
RHWC	(4,294)		
Agua Mansa/Meeks & Daley	(7,833)		
UCR	(536)		
Total Plaintiffs		(64,862)	
Total Other than Plaintiffs (SBVMWD)		167,238	
Surface Water Component		(52,200)	
Exports to Chino Basin			
FUWC	(10,170)		
WSBCWD	(1,806)		
City of Rialto	(551)		
Total Exports to Chino Basin		(12,527)	
Total Other than Plaintiffs - Groundwater		102,511	
Colton Basin Area	11,731		
Used in Riverside County	(3,381)		
Available Yield		8,350	
Riverside Basin Area	33,729		
Use in Riverside County	(21,085)		
Available Yield		12,644	
Yucaipa Basin			
Estimated Yield		8,700	
Total Groundwater			132,205
Surface Water			
Lytle Creek (Total flow = 24,000)			
Diverted flow	18,900		
FUWC Export	(6,900)		
Available Supply		12,000	
Santa Ana River (Total flow = 37,000)			
Diverted flow		25,800	
Mill Creek (Total flow = 18,000)			
Diverted flow		14,400	
Total surface water			52,200
Additional Surface Water			
New Supplies		11,000	
Increased water spreading		10,000	
Total Additional Supplies			21,000
Reclaimed Water			
Direct delivery		14,000	
Recharge		12,000	
			26,000
Total Water Supplies			231,405
Ultimate Demand			(364,566)
Demand/Supply Balance			(133,161)
Supplemental Water Requirement			(133,161)
66% of SBVMWD Entitlement to SWP Water ²			67,716
Demand/Supply Balance - SWP Water			(65,445)
Conservation (reduce demand)			65,445

² DRAFT The State Water Project Delivery Reliability Report, pg. 16, August 2002.

Meeting future demand will require sound basin management and conservation measures.

One part of basin management involves transporting the water from the high groundwater area where it is most prevalent to locations where it is needed. In order to accomplish this goal, additional facilities are required. Plate 1 from the District's Draft Environmental Impact Report for the Regional Water Facilities Master Plan (Master Plan), identifies the additional facilities required to meet ultimate demand with the District and also prioritizes the construction of the facilities (see Appendix A). However, the priorities are subject to change based upon needs and available funding.

The District is actively working on a variety of projects, most of which are from the District's Master Plan. A summary of the active projects is presented in Table 3.

TABLE 3. Summary of active District projects.

<i>Facility</i>	<i>Status</i>	<i>Funding</i>	<i>EIR</i>	<i>Construction</i>
Baseline Feeder Extension South	Preparing Construction Documents	Proposition 13	Complete	2005
Baseline Feeder West Extension	Preparing Preliminary Design	Proposition 13	Complete	Not Scheduled
Mentone Feeder Pipeline	Preparing Preliminary Design	State Water Project	In process	Not Scheduled
Mentone Reservoir and Pump Station	Preparing Preliminary Design	State Water Project	In process	Not Scheduled
Seven Oaks Dam Plunge Pool Pipeline	Preparing Preliminary Design	Unknown	In process	Not Scheduled
Seven Oaks Dam Minimum Discharge Pipeline	Preparing Preliminary Design	Unknown	In process	Not Scheduled
Devil Canyon Bypass	Preparing Preliminary Design	Unknown	In process	Not Scheduled
Central Feeder Pipeline	Conceptual Design Complete	Applied for Proposition 50	Complete	Not Scheduled

<i>Facility</i>	<i>Status</i>	<i>Funding</i>	<i>EIR</i>	<i>Construction</i>
San Bernardino Reservoir and Pump Station	Conceptual Design Complete	Applied for Proposition 50	Partially Complete	Not Scheduled
Redlands Reservoir and Pump Station	Conceptual Design Complete	Applied for Proposition 50	Partially Complete	Not Scheduled
Phase 1A Reservoir	Preliminary Design Complete	Applied for Proposition 50	In process	Not Scheduled

To help meet future demand, the District is also in the process of obtaining a water right to Santa Ana River water conserved by Seven Oaks Dam. This project has been ongoing for the last several years and will involve the construction of new facilities.

Reserve Capacity Policy

The District has no written policy to provide a fixed "reserved" amount of capacity in its facilities. However, most of the District's facilities have been conservatively designed so that they would be able to convey flow rates above the estimated, ultimate demand.

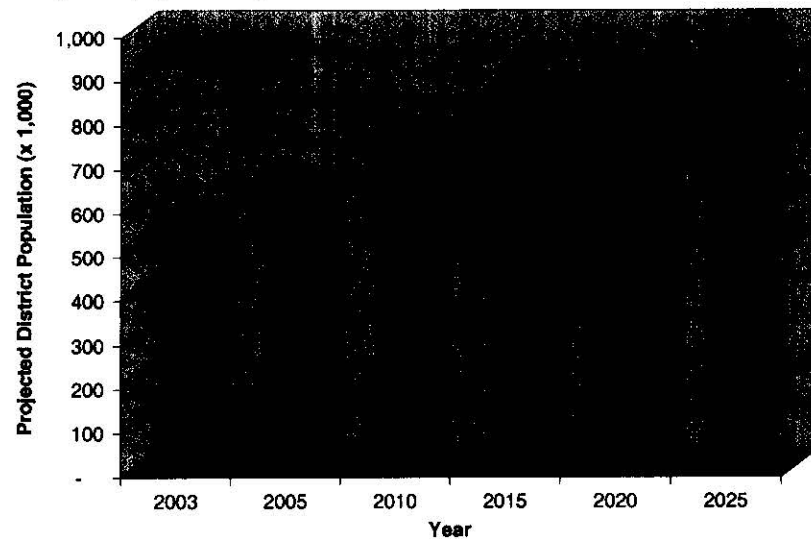
II. Growth and Population

Purpose: To evaluate service needs based upon existing and anticipated growth patterns and population projections.

Population Information

The District's population is projected to increase by nearly 70% within the next 22 years according to the San Bernardino Association of Governments (SANBAG). The District's current population is 576,000. The District's projected population for 2025 is 973,000. Figure 2 provides a graphical presentation of the projected population growth over time.

Figure 2. Projected population growth in the District.



1

Identify Significant Growth Areas

Projected growth areas within the District are shown on Figure 3.

Figure 3. Projected growth areas within the District.

Areas of Projected Significant Growth within the San Bernardino Valley Municipal Water District and Sphere of Influence within San Bernardino County

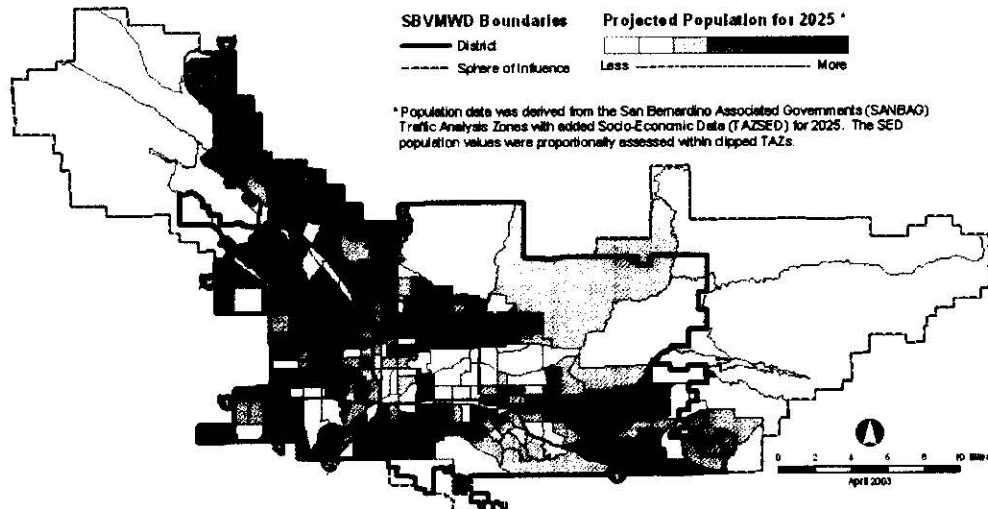
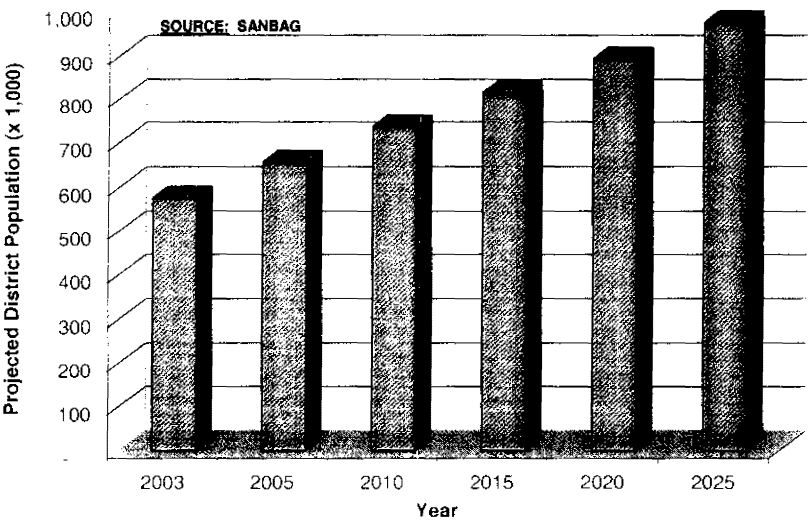


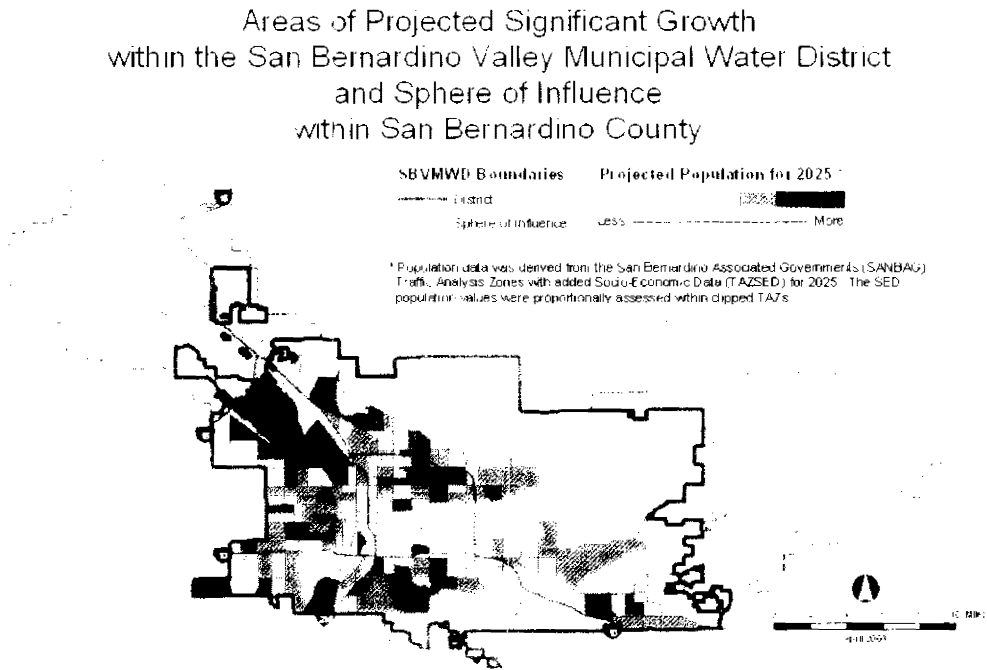
Figure 2. Projected population growth in the District.



Identify Significant Growth Areas

Projected growth areas within the District are shown on Figure 3.

Figure 3. Projected growth areas within the District.



III. Financing Opportunities and Constraints

Purpose: To evaluate factors that affect the financing of needed improvements.

Bond Rating

The last time the District was rated in 1994 its bond rating was A1.

For the recently completed East Branch Extension Phase I Facilities, the District financed \$60 million using the State Department of Water Resources Bonding capacity.

Joint Financing Projects

Nearly all of the District's facilities have been constructed through participation with other agencies. The District actively tries to design projects that could be mutually beneficial to another agency(s). Projects that involve multiple agencies reduce costs by eliminating parallel facilities. Below is a list of past projects that involved other agencies as well as current projects which the District believes will involve other agencies.

TABLE 4. Summary of joint financing/shared facilities.

<i>Facility(s)</i>	<i>Status</i>	<i>Participating Agencies</i>
Lytle Creek Pipeline	Complete	San Gabriel Valley Municipal Water District
Foothill Pipeline, SARC Pipeline, Greenspot Pipeline, Yucaipa Pipeline, East Branch Extension (Phase 1)	Complete	San Geronimo Pass Water Agency
Baseline Feeder Wells and Pipeline	Complete	West Valley Water District City of Rialto Riverside Highland Water Company
Baseline Feeder Extension South	Preparing Construction Documents	Western Municipal Water District City of San Bernardino City of Riverside
Baseline Feeder West Extension	Preparing Preliminary Design	Metropolitan Water District Inland Empire Utilities Agency Fontana Water Company

<i>Facility(s)</i>	<i>Status</i>	<i>Participating Agencies</i>
Mentone Feeder Pipeline	Preparing Preliminary Design	San Geronio Pass Water Agency California Department of Water Resources
Mentone Reservoir and Pump Station	Preparing Preliminary Design	San Geronio Pass Water Agency California Department of Water Resources
Seven Oaks Dam Plunge Pool Pipeline	Preparing Preliminary Design	Western Municipal Water District
Seven Oaks Dam Minimum Discharge Pipeline	Preparing Preliminary Design	Western Municipal Water District
Devil Canyon Bypass	Preparing Preliminary Design	San Gabriel Valley Municipal Water District
Central Feeder Pipeline San Bernardino Reservoir and Pump Station Redlands Reservoir and Pump Station	Conceptual Design Complete	Metropolitan Water District
Phase 1A Reservoir	Preliminary Design Complete	City of San Bernardino

Revenue Sources

The District's current revenue sources are as follows:

- 1) Property taxes
- 2) Bonds (for the recently completed East Branch Extension – Phase I Facilities, the District financed \$60 million using the State Department of Water Resources Bonding capacity).
- 3) State of California Propositions 13 and 50
- 4) United States Environmental Protection Agency Grants

- 5) State funding opportunities
- 6) Federal funding opportunities
- 7) Other agencies through participation in joint facilities.

IV. Cost Avoidance Opportunities

Purpose: To identify practices or opportunities that may help eliminate unnecessary costs.

Joint Agency Practices

Nearly all of the District's facilities have been constructed with participation with other agencies. Projects that involve multiple agencies reduce costs by eliminating parallel facilities. Please see Table 4 above for a list of District projects constructed with the help of other agencies.

Reliance on Other Agencies

In addition to participating with other agencies in facilities, the District is also working to reduce costs by sharing field personnel with other agencies. The Department of Water Resources East Branch Extension (EBX) of the State Water Project was recently completed through the District's service area. This project includes three pump stations, a surface reservoir, and 13 miles of 54-inch diameter pipeline. Rather than hire additional field staff to serve the eastern portion of the District's service area, DWR will be contracting with the District to have the District's field personnel operate and maintain the EBX. This should improve efficiency and reduce costs.

In addition to working with DWR, the District is also actively pursuing the possibility of using the City of San Bernardino's field staff to operate and maintain all of the District's potable water facilities. This should reduce costs by eliminating the need for the District to hire additional field personnel with potable water certifications.

Level of Service

The District's current level of service meets, or exceeds, the requirements of most retail water agencies within its service area.

Per-Unit Service Costs

The District's current "base" water rate is provided in Table 5 below. The District also provides rate reductions for planning ahead and a penalty for not planning ahead. See the "Rates" section below for a complete description of the District's current rate structure. Table 5 compares the District's base rate to the base rate of Metropolitan Water District of Southern California (MWD).

TABLE 5. Water pricing for the District and Metropolitan Water District
Water Price per Acre-foot

	District	MWD
Energy	\$108.00	
Conveyance	\$40.00	
TOTAL	\$148.00	\$349.00

V. Rate Restructuring

***Purpose:** To identify opportunities to positively impact rates without decreasing service levels.*

Rates

The District is responsible for maintaining the safe yield of the San Bernardino groundwater basin (basin) which has a capacity of approximately 5.5 million acre-feet¹ of water. The basin is plagued by groundwater contamination plumes. The largest plumes are believed to be due to the past activities of the United States Department of Defense and their Contractors. When the defense industry was thriving in the area, there were multiple military bases and multiple defense contractors. Common practice of the day was to dispose of chemicals and solvents by dumping them on the ground or using underground disposal systems (dry wells, leach fields, etc.). These contaminants eventually reached the groundwater and were dispersed and transported laterally with the flow of the groundwater.

The District is also a water wholesaler and sells water from the State Water Project (SWP) to supplement the retail water supply. Faced with the contamination plumes in the area, the primary users of the basin (retail water agencies) are forced to evaluate various options for meeting their demand. One option is to treat the groundwater and serve it to their customers while another option is to purchase SWP water from the District. Generally, the decision is based upon economics. If SWP is less expensive than treating the contaminated groundwater, then the retail agencies will depend upon the SWP

¹ An acre-foot of water is 326,000 gallons.

for their supply. As the "basin manager", the District recognizes the tremendous resource and believes that it should be used as the primary supply with SWP water being used solely as a backup supply. To encourage retail agencies to clean up the groundwater instead of relying on the SWP, the District has established a new rate structure. The new rate structure is higher than previous rates to discourage its use as a primary source and provides incentives to retail agencies for planning ahead.

As stated above, the District's base rate for water for delivery inside the District is \$148 per acre-foot. The various pricing categories for delivery inside the District are summarized below.

Table 6. District rate structure.

Pricing Category	Description	Requirements	(Reduction) or Penalty
Tier I	Plan Ahead	Order by December 31 and pay for by January 31. For delivery the following calendar year.	(15%)
Tier II	Seasonal Storage	Order by December 31 and pay for by January 31. For groundwater recharge in Jan, Feb, Mar, Apr, or May of following calendar year.	(20%)
Tier III	Spot Market	Water ordered anytime during the year for use during the same year.	+ 25%

VI. Opportunities for Shared Facilities

Purpose: To evaluate the opportunities for a jurisdiction to share facilities and resources to develop more efficient service delivery systems.

Shared Facilities

See Table 4 above for a listing of existing and proposed shared facilities.

VII. Government Structure Options

Purpose: To consider the advantages and disadvantages of various government structures to provide public services.

Agency Recommendation

The District accomplishes its Basin Recharge role in the Yucaipa, San Timoteo, Colton-Rialto, Lytle, and Bunker Hill basins primarily by using the facilities of the San Bernardino County Flood Control District. Occasionally, the District also uses the spreading grounds of the San Bernardino Valley Water Conservation District (a Water Conservation District whose lands completely lie within the boundaries of the District) to recharge the sub-area of the District which is influenced by spreading in the Conservation District Facilities.

VIII. Evaluation of Management Efficiencies

Purpose: To evaluate whether organizational changes to governmental structure can be made to improve the quality of public services in comparison to cost.

Staffing Levels

The District has a small staff. The District hires professional consultants to complement the staff and improve productivity, as needed. This management philosophy reduces the size of the staff and minimizes the possibility of laying personnel off in a financial crisis. The philosophy also allows the District to hire the right skill for the project. For example, should the District have a need to design a water pump station, the District can hire a consultant who has expertise designing pump stations to assist staff.

Technology

The District is very proactive in using technology to improve the production and efficiency of its small staff. Each staff member has a computer and a printer at their workstation which is linked together with the other computers and printers in a computer network. In addition, the District uses a computer-based "control system" to operate many of its facilities. This control system allows District field personnel to make operational changes from almost anywhere using a laptop computer.

Budget

The District adopts a budget for each fiscal year July 1 – June 30. The budget provides general guidelines for the year. However, many expenditures are taken back to the Board for approval before the funds are committed. The District's revenues, reserves and expenditures are presented in the latest financial statements included in Appendix F.

Joint Powers Agreements

The District is part of the following Joint Powers Agreements/Agencies:

- A. San Bernardino Water Resources Authority
 - 1. City of San Bernardino
 - 2. Inland Valley Development Agency
- B. Santa Ana Watershed Project Authority
 - 1. Inland Empire Utilities Agency
 - 2. Orange County Water District
 - 3. Western Municipal Water District
 - 4. Eastern Municipal Water District
- C. Baseline Feeder Agreements
 - 1. West Valley Water District
 - 2. City of Rialto
 - 3. Riverside Highland Water Company

IX. Local Accountability and Governance

Purpose: To evaluate the accountability and levels of public participation associated within the agency's decision-making and management processes.

Governing Body

The District consists of five (5) separate political "divisions". Each division is sized based upon population and adjusted following each census. One (1) person living within each division is elected to represent the division on the District's Board of Directors. The Directors serve a four (4) year term.

The District Board of Directors currently meet on the first and third Mondays of every month at 2:00PM at the District's headquarters located at 1350 South E Street in San Bernardino. The District notices all public meetings pursuant to the Ralph M. Brown Act, California Codes Government Code Section 54950-54962.

[Public] Access

The District's normal business hours are 8:00AM – 12 noon and 1:00PM to 5:00PM, Monday through Friday.

The District communicates with the general public using newsletters, letters and its website, www.sbvnmwd.com.

Regular Progress Reports

The District Board of Directors reviews its budget and approves expenditures once a month at one of its regular Board meetings.

APPENDIX

- A. San Bernardino Valley Municipal Water District Regional Water Facilities Master Plan, August 15, 1995

San Bernardino Valley Municipal Water District Regional Water Facilities Master Plan Draft Environmental Impact Report, October 13, 2000

San Bernardino Valley Municipal Water District Regional Water Facilities Master Plan Final Environmental Impact Report, February, 1 2001
- B. History of the San Bernardino Valley Municipal Water District.
- C. San Bernardino Valley Municipal Water District water deliveries for calendar year 2002.
- D. California Department of Water Resources East Branch Extension, Phase 1.
- E. Metropolitan Water District of Southern California water pricing information.
- F. San Bernardino Valley Municipal Water District Rules, Regulations and Rates for the Sale and Delivery of Water.
- G. San Bernardino Valley Municipal Water District Financial Statements, June 30, 2002 and 2001.
- H. Correspondence dated March 26, 2003 from County of San Bernardino Local Agency Formation Commission.
- I. The State Water Project Delivery Reliability Report (Draft), August 2002.

**A. San Bernardino Valley Municipal Water District Regional Water
Facilities Master Plan, August 15, 1995**

**San Bernardino Valley Municipal Water District Regional Water
Facilities Master Plan Draft Environmental Impact Report,
October 13, 2000**

**San Bernardino Valley Municipal Water District Regional Water
Facilities Master Plan Final Environmental Impact Report,
February 1, 2001**

B. History of the San Bernardino Valley Municipal Water District.

MAJOR EVENTS IN THE HISTORY OF THE SAN BERNARDINO VALLEY MUNICIPAL WATER DISTRICT

February 1954	DISTRICT Incorporation; First meeting of the Board
December 1960	DISTRICT signs 75 year contract with State of California for an imported water supply. District's entitlement established at 46,000 acre-feet in 1972, increasing to 98,000 acre feet (subsequently acquired 4,600 acre feet for a total of 102,600 acre-feet.)
August 1961	Improvement District "A" formed in Yucaipa. Improvement District "B" formed in Yucaipa.
March 1962	Improvement District "C" formed in Yucaipa.
May 1966	DISTRICT signed a lease with the City of San Bernardino for property on South "E" Street in San Bernardino on which to construct offices.
August 1966	G. Louis Fletcher appointed as Chief Engineer for the District.
September 1966	DISTRICT entered into a cooperative agreement with the State of California Department of Water Resources for a water management study for planned utilization of the groundwater basins in the San Bernardino Valley.
November 1966	DISTRICT entered into a contract with the County of San Bernardino and the Yucaipa Valley Park and Recreation District for the development and operation of the Yucaipa Regional Park.
December 1966	The contract for construction of an office building on South "E" Street in San Bernardino was awarded.
May 1968	A report was prepared by the DISTRICT proposing a cooperative water supply plan (the Exchange Plan).
April 1969	Settlement was reached in the 1963 lawsuit between plaintiff Orange County Water District and defendants Chino Basin Municipal Water District, Western Municipal Water District, and the DISTRICT. Settlement was reached in the 1963 lawsuit between plaintiff Western Municipal Water District and the DISTRICT.
April 1969	Appointment of Watermasters.

June 1969	Consultant hired by DISTRICT for planning water transmission system.
August 1969	Contract awarded for construction of shop and storage building on South "E" Street.
July 1970	DISTRICT and San Geronio Pass Water Agency enter into agreement for joint use of the Foothill Pipeline.
December 1970	Publication by the State of California Department of Water Resources Bulletin No. 104-5 titled "Meeting Water Demands in the Bunker Hill-San Timoteo Area".
December 1970	Construction contract awarded for first phase of transmission system - the pipeline from the Devil Canyon afterbay to the Waterman Avenue Turnout north of 40th Street in San Bernardino.
March 1971	Voters within DISTRICT approve measure authorizing sale of \$25 million general obligation bonds for pipeline construction.
June 1971	Awarded construction contract for Operations Center building on South "E" Street.
June 1971	Sale of Series "A" Bonds in the amount of \$4 million to finance construction of transmission system.
August 1972	DISTRICT entered into an agreement with San Gabriel Valley Municipal Water District for joint use of the Devil Canyon-Azusa Pipeline to serve the western portion of the District.
October 1972	Sale of Series "B" Bonds in the amount of \$12 million to finance construction of transmission system.
October 1972	DISTRICT began to monitor U.S. Army Corps of Engineers' proposal to construct the Mentone Dam.
December 1972	First deliveries to the DISTRICT of water from the California State Water Project.
September 1973	Construction contract awarded for second phase of the water transmission system from Waterman Canyon to the Santa Ana River.
November 1974	Sale of Series "C" Bonds in the amount of \$9 million to finance construction of the water transmission system.

November 1975	Davis-Grunsky Act Grant Contract signed between the State of California and the District providing grants for construction of reservoirs and water-related recreation facilities at Yucaipa Regional Park.
November 1975	Santa Ana Watershed Project Authority formed with Orange County Water District, Chino Basin Municipal Water District, Western Municipal Water District, and San Bernardino Valley Municipal Water District.
May 1976	The Santa Ana River - Mill Creek Cooperative Water Project Agreement was signed by all ten parties. This agreement was the culmination of several years of negotiations to put the Exchange Plan into effect.
February 1977	Construction contract awarded for grading for the dams and reservoirs at Yucaipa Regional Park.
July 1977	Contract awarded for construction of the North Fork Turnout.
September 1977	Entered into agreements with Environmental Protection Agency and State Water Resources Control Board for grant funding for a wastewater facilities planning study with the DISTRICT acting as lead agency.
November 1978	Contract awarded for the construction of the Mill Creek Pipeline to the Yucaipa Lakes.
May 1979	Receipt of \$10,000 grant from California Energy Commission for study of hydroelectric potential on the DISTRICT transmission system.
July 1979	Contract awarded for the construction of Phase I of the Greenspot Pipeline.
July 1981	Opening of the Yucaipa Regional Park and dedication of Lake Holden in memory of deceased DISTRICT Director Holden.
November 1981	Spreading ponds in the Rialto area constructed.
December 1981	Agreements approved allowing additional extractions from the San Bernardino Basin Area to help alleviate the high groundwater problem in the Southern part of the City of San Bernardino.
January 1982	DISTRICT Board of Directors adopted resolution opposing the proposed Mentone Dam.

May 1983	Contract awarded for construction of Phase II of the Greenspot Pipeline.
May 1983	Contract awarded for the construction of the Santa Ana River Crossing (SARC) Pipeline.
June 1983	Sale of Certificates of Participation for \$5,750,000 to finance the construction of the SARC and Greenspot Pipelines.
February 1984	DISTRICT marks its 30th year of serving the inhabitants of the District.
October 1985	DISTRICT signs agreement with the City of Rialto and Marygold Mutual Water Company for providing supplemental water to the Colton/Rialto Basin and the Chino Basin within the DISTRICT.
February 1986	San Gorgonio Pass Water Agency and DISTRICT enter into agreement for joint construction and use of facilities to transport water into the Yucaipa area and the San Gorgonio Pass Water Agency service area.
March 1986	Contracts awarded for construction of the Yucaipa Pipeline, Tate Pump Station, and Greenspot Phase III Pipeline.
April 1986	Yucaipa Regional Park completed and accepted by the State Department of Water Resources.
April 1986	U.S. Army Corps of Engineers agrees to relocate the proposed Mentone Dam to the Upper Santa Ana site as proposed by DISTRICT.
September 1986	DISTRICT entered amended contract with State Department of Water Resources to enlarge the capacity of the East Branch of the State Water Project.
October 1986	Approval given for an Agreement among the City of Colton, the City of San Bernardino Water Commission, the Santa Ana Watershed Project Authority, Western Municipal Water District, and DISTRICT to create a Task Force to formulate a Regional Plan for the collection, treatment, and disposal of wastewater on a region-wide basis.
October 1986	Awarded contract to Gierlich-Mitchell of El Segundo for a Radio Telemetry Control System on the Greenspot portion of the Exchange Plan water transmission facilities.

November 1986	Sponsored Water Resources Conference at National Orange Show Restaurant.
April 1987	Held dedication ceremonies for the newly completed Tate Pump Station and the Greenspot Phase III, Tate, and Yucaipa Pipelines.
May 1987	District entered into a cooperative agreement with the Santa Ana Watershed Project Authority regarding the formation of Project Committee 12, Lake Management Program for Lake Elsinore, to mitigate adverse impacts on the groundwaters and surface water of the Santa Ana Watershed.
July 1987	Formation of Advisory Commission on Water Policy to advise the DISTRICT Board of Directors on water policy issues.
August 1987	Initiated School Water Education Program.
August 1987	Proposal received for U. S. Geological Survey's "Optimum Management in a Basin with Changing Water-Supply and Water-Quality Problems".
October 1987	In conjunction with the Department of Water Resources developed an Emergency Response Manual for Water Managers.
November 1987	Approval of Groundwater Management Agreement among DISTRICT, City of San Bernardino and Board of Water Commissioners of the City of San Bernardino providing for mutual cooperation among the parties in dealing with high groundwater problems.
December 1987	Approval given for financial support for Cal State University's Inland Empire Environmental EXPO.
February 1988	Approval given for financial assistance to City of Redlands for proposed "rotor strip" treatment method of TCE contaminated groundwater.
March 1988	Entered into agreement with member agencies of SAWPA and the Santa Ana River Dischargers Association to form the Basin Plan Upgrade Task Force to study the possible need for denitrification of sewer plants located within the Santa Ana River watershed as specified by California Regional Water Quality Control Board.
March 1988	Approval given for financial support of State Water Contractors' Bay-Delta Phase II and III hearings, the outcome of which will be

used to balance the needs among all users of water from the Sacramento Delta.

- | | |
|---------------|---|
| May 1988 | Approved bid for emergency purchase of a diesel engine and pump for temporary use at Greenspot per request of Bear Valley Mutual Water Company and City of Redlands. |
| November 1988 | Authorized construction of Mill Creek-Yucaipa Pipeline Inlet Facility at Southern California Edison Company's 2-3 Afterbay site. |
| January 1989 | Fencing contract awarded for Wilson Flood Control Basins in Yucaipa. |
| May 1989 | Tour of State Water Project facilities for members of DISTRICT Advisory Commission on Water Policy. |
| August 1989 | Approved study with Boyle Engineering for "Joint San Geronio Pass Water Agency/DISTRICT Water Importation Project". |
| October 1989 | Approval given for construction contract for two Baseline Feeder Wells. |
| November 1989 | Water supply agreements signed by City of Rialto and West San Bernardino County Water District and Riverside Highland Water Company for a water supply from the DISTRICT's Baseline Feeder. |
| November 1989 | Award of Bid for Baseline Feeder Pipeline contracts. |
| December 1989 | Groundwater Management Agreement between City of San Bernardino and DISTRICT. |
| February 1990 | Received final payment on 1978 Clean Water Grant from State Water Resources Control Board and Environmental Protection Agency. |
| June 1990 | Certificates of Participation for Baseline Feeder-and Refunding of 1983 Certificates of Participation. |
| June 1990 | Approval of Agreement with Camp, Dresser & McKee to provide for the development of a Master Plan for the ultimate District water supply transmission treatment facilities to maximize/optimize the import of State Water Project water. |
| May 1991 | Completion of Baseline Feeder Pipeline. |

August 1992	DISTRICT agrees to provide construction water for the Seven Oaks Dam.
March 1993	Rialto, Colton, Yucaipa Valley Water District and City of San Bernardino contract for capacity in the Santa Ana Regional Interceptor Line (Brine Line).
November 1993	District and Western Municipal Water District provide funding for the US Army Corps of Engineers study of water conservation at Seven Oaks Dam. Subsequently Western and District fund \$3.2 million for extension of the blanket drain.
April 1995	DISTRICT purchases office site at 1350 South E Street.
May 1995	DISTRICT files petition and application with the State Water Resources Control Board to appropriate water from the Santa Ana River at the Seven Oaks Dam.
February 1996	DISTRICT and Big Bear MWD agree to settle lawsuit regarding purchase of State Water Project Water from the DISTRICT to meet the "in-lieu" needs.
April 1996	Big Bear Municipal Water District owned stock in Bear Valley Mutual Water company, a Well and two well sites on San Bernardino Avenue in Redlands transferred to DISTRICT.
June 1996	DISTRICT agrees to sell land for environmental mitigation at Seven Oaks Dam to County Flood Control District.
August 1996	DISTRICT and San Geronio Pass Water Agency agreement with DWR for the East Branch Extension of the State Water Project.
March 1996	Final Design and Construction agreement Phase 1, East Branch Extension of the State Water Project.
March 1997	District approves, after litigation, the Monterey Amendment to its long term water supply contract with DWR.
August 1997	District agrees to assist Reche Canyon Mutual Water Company to provide a supplemental water supply.
September 1997	District enters into water sales contract with Western Water Company.

October 1997	Metropolitan Water District of Southern California and Department of Water Resources challenge DISTRICT's right to sell State Water Project water to Western Water Company.
July 1998	Assignment of Capacity Rights to Department of Water Resources for the DISTRICT's East Branch Extension Facilities.
August 1998	San Bernardino Regional Water Resources Authority (JPA) formed.
December 1998	High Groundwater Pilot De-watering Program Negative Declaration and contracts approved.
April 1999	Final Design and Construction contract authorizing the California Department of Water Resources to Proceed with the East Branch Extension of the State Water Project.
July 1999	District agrees to fund \$25,000 to form the California State University, San Bernardino, Water Resources Institute.
September 1999	District becomes involved in the Federal Energy Regulatory Agency (FERC) re-licensing of hydroelectric facilities within the District.
December 1999	Vision 20/20 Plan Approved by the San Bernardino Regional Water Resources Authority.
February 2000	District supports Proposition 13 - The Safe Drinking Water, Clean Water, Watershed Protection and Flood Protection Act which includes \$42 million for projects within the District.
May 2000	Agreement with Orange County Water District to Purchase water under the Pilot De-watering program for 2000
June 2000	Coordinated Operating Agreement between Metropolitan Water District of Southern California and the District providing for MWDSC to purchase surplus water and to provide access to unused capacity in both distribution systems.
September 2000	District notified by State Water Resources Control Board of State Board's acceptance District's application to appropriate water as a result of the Seven Oaks Dam.
January 2001	District purchases 1331 South E Street, San Bernardino for Office site.

January 2001	Calendar year 2001 agreement among Western Municipal Water District, Orange County Water District and SBVMWD to allow Orange County to purchase water from SBVMWD under the Pilot De-Watering Program.
February 2001	Board certifies Master Plan EIR.
April 2001	Board approves Attachment 2-Coordinated Use Agreement for Conveyance Facilities and State Water Project Supplies between Metropolitan Water District of Southern California and the District.
May 2001	G. Louis Fletcher announces his retirement effective June 30, 2001 after having served the District for 35 years.
May 2001	Board of Directors appoints Robert L. Reiter as General Manager and Chief Engineer to succeed Mr. Fletcher

-
- C. San Bernardino Valley Municipal Water District water deliveries for calendar year 2002.**



San Bernardino Valley Municipal Water District

Delivery of Water For Calendar Year 2002 -- Acre Feet

Measurement / Delivery Point	JAN	FEB	MAR	APR	MAY	JUN	JUL	AUG	SEP	OCT	NOV	DEC	TOTAL
STATE WATER PROJECT WATER													
1. Lytle Creek Linden Ponds	0	0	0	0	0	0	0	0	0	0	0	0	0
2. Lytle Creek Gravel Pit - Fontana W.C.	0	0	0	0	12	51	87	253	262	268	67	0	998
3. W.S.B.C.W.D. Water Treatment Plant	0	0	129	201	269	399	495	460	434	361	103	0	2,851
4. Sweetwater	1,220	0	0	0	123	938	813	908	868	707	436	546	6,559
5. Badger	0	0	0	0	0	0	0	0	0	0	0	0	0
6. Waterman	0	0	0	0	0	0	0	0	620	1,092	902	914	3,528
7. Patton	0	0	0	0	0	0	0	0	0	0	0	0	0
8. East Valley Water Treatment Plant	0	0	0	0	0	0	0	0	0	0	0	0	0
9. City Creek	0	0	0	0	0	0	0	0	0	0	0	0	0
10. Santa Ana Low	0	0	0	0	0	0	0	0	2,308	2,027	1,387	17	5,737
11. Northfork	0	0	0	28	157	494	501	501	490	495	196	0	2,862
12. Edwards Canal Pump	0	0	0	8	8	45	55	54	55	40	0	0	265
13. S.A.R.C. to Redlands Aqueduct	864	810	883	634	893	1,086	1,120	1,105	1,464	1,881	1,527	148	12,415
14. Greenspot Pump Station	0	0	0	0	0	0	0	158	268	218	176	12	832
15. MWDSC	0	0	0	0	5,000	0	0	0	0	0	0	30,000	35,000
16. MWDSC Construction (Waterman)	0	0	0	0	0	0	0	0	0	2	2	1	5
16. MWDSC Construction (City Creek)	0	0	0	0	0	0	0	0	3	5	3	4	15
16. MWDSC Construction (Cone Camp)	0	0	0	0	0	0	0	0	0	0	0	0	0
17. East Valley Water District East	0	0	0	0	0	0	0	0	407	398	311	0	1,116
Total State Water Project Deliveries	2,084	810	1,012	871	6,462	3,013	3,071	3,439	7,177	7,492	5,110	31,642	72,183

Lytle Creek pit

SAN BERNARDINO BASIN PUMPING

18. 9th Street Well	244	194	186	178	185	193	242	237	222	135	0	0	2,016
19. Ferris Street Well	213	90	0	0	0	0	0	15	174	245	243	309	1,289
20. San Bernardino Ave. Well #1	0	0	0	0	16	174	239	272	274	230	0	0	1,205
Total San Bernardino Basin Pumping	457	284	186	178	201	367	481	524	670	610	243	309	4,510

San Bernardino Valley Municipal Water District — Delivery of Water for Calendar Year 2002

Measurement / Delivery Point	JAN	FEB	MAR	APR	MAY	JUN	JUL	AUG	SEP	OCT	NOV	DEC	TOTAL
SANTA ANA RIVER													
21. Lytle Creek Linden Ponds	0	0	0	0	0	0	0	0	0	0	0	0	0
22. Sweetwater	0	0	0	0	0	0	0	0	0	0	0	0	0
23. Badger	0	0	0	0	0	0	0	0	0	0	0	0	0
24. Waterman	0	0	0	0	0	0	0	0	0	0	0	0	0
25. Patton	0	0	0	0	0	0	0	0	0	0	0	0	0
26. East Valley Water Treatment Plant	0	0	0	0	0	0	0	0	0	0	0	0	0
27. City Creek	0	0	0	0	0	0	0	0	0	0	0	0	0
28. Santa Ana Low	0	0	0	0	0	0	0	0	0	0	0	0	0
29. MCC to SARC to DWR	0	0	0	0	0	0	0	0	0	0	0	0	0
30. MCC to SARC to Redlands Aqueduct	0	0	0	0	0	0	0	0	0	0	0	0	0
31. East Branch Extension Construction	0	10	0	0	1	0	0	0	0	0	0	0	11
32. Bear Valley Highline Connector	0	0	0	0	0	0	0	0	0	0	0	0	0
33. SB County Flood Control Grove	0	0	9	49	40	46	12	21	0	0	0	0	177
34. Newport Ave. - Greenspot Mutual	0	0	0	0	0	0	0	0	0	0	0	0	0
35. Newport Ave. - B.V.M.W.C.	9	10	7	7	13	14	11	9	0	0	0	0	80
36. Mill Creek Spreading	0	3	0	0	0	0	0	0	0	0	0	0	3
37. Unger Lane to Zanja - Crafton	153	187	247	232	231	157	20	2	0	0	0	0	1,229
38. Boullion Box to Zanja	0	0	0	0	0	0	0	0	0	0	0	0	0
39. Boullion Box to Highline	0	0	0	0	0	0	0	0	0	0	0	0	0
40. Zanja East Weir to Zanja	0	0	0	0	89	67	65	0	0	0	0	0	221
41. City of Redlands - Tate Treatment	0	0	0	0	0	0	0	0	0	0	0	0	0
Total Santa Ana River Water	162	210	263	288	374	284	108	32	0	0	0	0	1,721

MILL CREEK													
42. Yucaipa Regional Park	0	0	0	0	27	10	0	11	0	0	0	0	48
43. Wilson Spreading Basins	0	0	0	0	0	0	0	0	0	0	0	0	0
44. Spreading Below Yucaipa Park	0	0	0	0	64	63	35	0	0	0	0	0	162
Total Mill Creek Water	0	0	0	0	91	73	35	11	0	0	0	0	210

TOTAL Water in SBVMWD Facilities	2,703	1,304	1,461	1,337	7,128	3,737	3,695	4,006	7,847	8,102	5,353	31,951	78,624
---	--------------	--------------	--------------	--------------	--------------	--------------	--------------	--------------	--------------	--------------	--------------	---------------	---------------

East Branch Extension --- Delivery of Water for Calendar Year 2002

Measurement / Delivery Point	JAN	FEB	MAR	APR	MAY	JUN	JUL	AUG	SEP	OCT	NOV	DEC	TOTAL
Greenspot Pump Station													
32. Bear Valley Highline Connector	0	0	0	0	0	0	0	0	0	0	0	0	0
33. SB County Flood Control Grove	0	0	9	0	0	0	0	4	46	41	37	0	137
34. Newport Ave. - Greenspot Mutual	0	0	0	0	0	0	0	6	33	27	2	0	68
35. Newport Ave. - B.V.M.W.C.	0	0	0	0	0	0	0	0	10	10	9	0	29
36. Mill Creek Spreading	0	0	0	0	0	0	0	0	0	0	0	0	0
37. Unger Lane to Zanja - Crafton	0	0	0	0	0	0	0	77	4	70	0	0	151
38. Boullion Box to Zanja	0	0	0	0	0	0	0	0	0	0	0	0	0
39. Boullion Box to Highline	0	0	0	0	0	0	0	0	0	0	0	0	0
40. Zanja East Weir to Zanja	0	0	0	0	0	0	0	24	1	0	0	0	25
41. City of Redlands - Tate Treatment	0	0	0	0	0	0	0	0	0	0	0	0	0
41. Crafton Hills Forebay Tank	0	0	0	0	0	0	0	47	174	69	128	12	430
Total Greenspot Pump Water	0	0	9	0	0	0	0	158	268	217	176	12	840

Crafton Hills Reservoir													
32. Yucaipa Regional Park	0	0	0	0	0	0	0	0	7	13	7	0	27
33. Wilson Spreading Basins	0	0	0	0	0	0	0	0	61	0	0	0	61
34. Yucaipa Valley Water Dist. Irrigation	0	0	0	0	0	0	0	15	86	55	29	0	185
35. Wilson Creek	0	0	0	0	0	0	0	0	0	0	0	0	0
35. Garden Air Creek	0	3	0	0	0	0	0	0	0	0	0	0	3
36. Singleton Creek	0	0	0	0	0	0	0	0	0	0	0	0	0
37. Cherry Valley Pump Station	0	0	0	0	0	0	0	0	0	0	0	0	0
38. Little San Geronio Creek	0	0	0	0	0	0	0	0	0	0	5	0	5
40. Cherry Valley Spreading	0	0	0	0	0	0	0	0	0	0	0	0	0
41. Nobel Creek	0	0	0	0	0	0	0	0	0	0	0	0	0
41. Reach 2 & 3 Pipelines	0	0	0	0	0	0	0	19	0	0	0	19	38
Total Crafton Hills Water	0	3	0	0	0	0	0	34	154	68	41	19	319

Sphere of Influence/Service Review
San Bernardino Valley Municipal Water District
Capacity Analysis

Facility	Capacity (cfs)	Capacity (acre-feet)	Use (acre-feet)	Available Capacity (acre-feet)	% Utilization
Lytle Creek Pipeline	55	39,749	3,849	35,900	10%
Foothill Pipeline	230	166,221	68,334	97,887	41%
SARC Pipeline	67	48,421	32,415	16,006	67%
Morton Canyon Connector	67	48,421	14,454	33,967	30%
Greenspot Pipeline	88	63,598	17,015	46,583	27%
Tate Pipeline	67	48,421	221	48,200	0%
Mill Creek Pipeline	88	63,598	14,454	49,144	23%
Yucaipa Pipeline	88	63,598	210	63,388	0%
Bryant Street Pipeline	88	63,598	14,454	49,144	23%
Greenspot Pump Station	50	36,135	14,454	21,681	40%
Crafton Hills Pump Station	88	63,598	14,454	49,144	23%
Tate Pump Station	32	23,126	-	23,126	0%
Baseline Feeder Pipeline	88	63,598	4,510	59,088	7%
Baseline Feeder Wells	14	10,118	4,510	5,608	45%
Yucaipa Lakes Pipeline	9	6,504	48	6,456	1%

**D. California Department of Water Resources East Branch Extension,
Phase 1.**

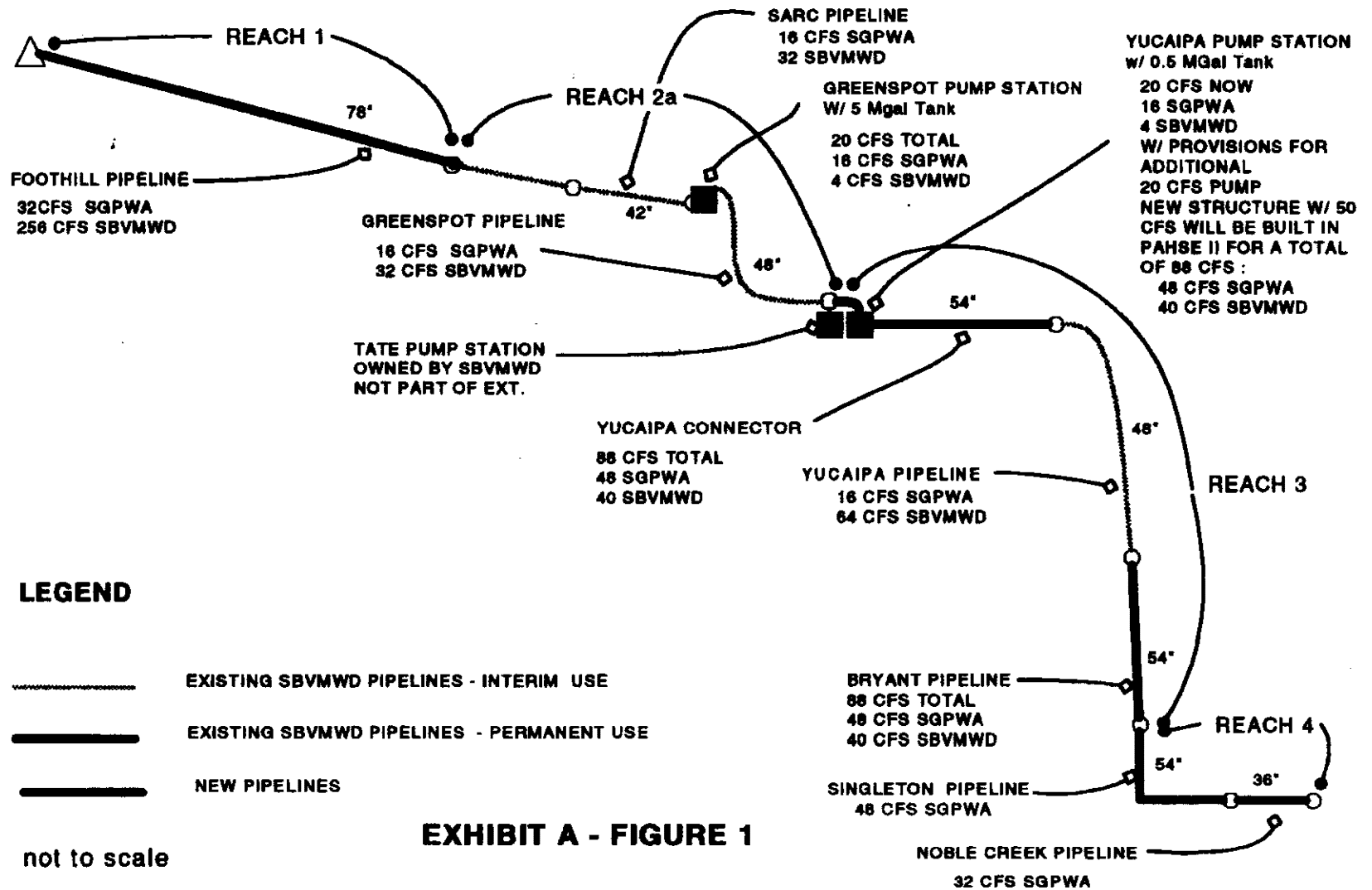
EAST BRANCH EXTENSION

NOV 15, 1995

PHASE I FACILITIES

SGPWA & SBVMWD PARTICIPATION

DEVIL CANYON POWERPLANT



A-2

EXHIBIT A - FIGURE 1

Department of Water Resources
East Branch Extension Phase I

Pump Stations

Greenspot Pump Station Constructed capacity: 50 cfs 500 feet Total Dynamic Head.

Southern California Edison 33 kV incoming power transformed on site to 4,160 volts for motors

Installed capacity: 3 variable frequency drive pumps 10 cfs capacity each 800 Horsepower motor
1 variable frequency drive pump 20 cfs capacity with 1500 Horsepower motor

1 extra suction can sized for another 20 cfs capacity pump

Site elevation 1840 Mean Sea Level

Minimum Suction side water surface elevation 1850

Discharge hydraulic grade line elevation 2270 to 2350

Crafton Hills Pump Station Constructed capacity: 40 cfs 700 feet Total Dynamic Head

Southern California Edison 115 kV power transformed on site to 4,160 volts for motors

Installed capacity: 2 fixed speed pumps 10 cfs capacity each 1,000 Horsepower motors
1 fixed speed pump 20 cfs capacity 2,000 Horsepower motor

1 extra suction can sized for another 20 cfs capacity pump

3 million gallon capacity DYK prestressed concrete forebay tank.

Concrete walls of tank are cast in place 10 inches thick 24 feet high tank is then wrapped with high tension steel rope to contain stress caused by water being stored in tank.

Site Elevation 2290 mean sea level

Minimum Suction side water surface elevation 2290

Discharge Hydraulic Grade Line elevation 2925 to 3000 feet

Cherry Valley Pump Station Constructed capacity 16 cfs 175 feet Total Dynamic Head

Southern California Edison 12 kV power transformed on site to 480 volts for motors

Installed capacity: 2 variable frequency drive pumps 8 cfs capacity each with 150 Horsepower motors

2 extra suction cans sized for 2 variable frequency drive 16 cfs capacity pumps

Pipelines

Morton Canyon Connector Pipeline to Greenspot Pipeline

Morton Canyon Pipeline was constructed by San Bernardino Valley Municipal Water District, 42 inch diameter pretensioned concrete cylinder pipe. It is buried in a cross country route 3,000 feet to Morton Canyon Valve Complex. The Morton Canyon Connector joins the Greenspot Pipeline at Morton Canyon Valve Complex. Morton Canyon Valve Complex contains an in-line valve and allows introduction of local water supplies. San Bernardino Valley Municipal Water District constructed the Greenspot Pipeline from 48 and 42 inch diameter prestressed concrete cylinder pipe. It follows a buried cross country route passing several turnouts 15,000 feet to Crafton Hills Pump Station.

Reach 1 54 inch diameter welded steel pipe with coal tar enamel coating and cement mortar lining buried in cross country route and extends from Crafton Hills Pump Station 10,800 feet to Crafton Hills Reservoir and continues 4,700 feet to Carter Street Valve Complex at the intersection of Carter Street and Bryant Street in Yucaipa. Carter Street Valve Complex includes a line valve and meter facility as well as allowing introduction of local water supplies.

Reach 2 54 inch diameter welded steel pipe with coal tar enamel coating and cement mortar lining buried in Bryant Street extends from Carter Street Valve Complex at Carter Street and Bryant Street 24,000 feet to Garden Air Creek

Reach 3 54 inch diameter welded steel pipe with coal tar enamel coating and cement mortar lining continuing 19,000 feet buried in cross country route from Garden Air Creek to Cherry Valley Pump Station at Orchard Street and Taylor Drive Cherry Valley. Continuing 36 inch diameter welded steel pipe coal tar enamel coating and cement mortar lining 9,600 feet in Orchard Street to Little San Geronio Creek and Noble Creek.

Crafton Hills Reservoir

Maximum Operating Water Surface Elevation 2925 Storage 120 Acre Feet
Minimum Operating Water Surface Elevation 2905 Storage 40 Acre Feet
Operational Storage 80 Acre Feet or 26 million gallons
Inlet Pipeline EBX Reach 1 54 inch diameter Welded Steel Pipe
Outlet Pipeline EBX Reach 1 54 inch diameter Welded Steel Pipe
Crest Elevation 2932 mean sea level
Spillway Elevation 2926 mean sea level
Freeboard 6 feet
Downstream Toe Elevation 2835 mean sea level
Height of Dam from Downstream Toe to Crest of Dam 97 feet
Upstream Slope 2.5 horizontal to 1 vertical Downstream slope 2 horizontal to 1 vertical
Volume of Embankment 130,000 Cubic Yards in 7 zones or types of fill.
Volume of pressure Grout injected below foundation 710 cubic feet

E. Metropolitan Water District of Southern California water pricing information.



[HOME](#)
[OPERATIONS DATA](#)
[WATER RATES](#)

[Site Index](#)

Water Rates

The Metropolitan Water District of Southern California Water Rates

Dollars Per Acre Foot

Year	Full Service		Interim Agricultural Program		Long-Term Seasonal Storage Service		Shift Seasonal Storage Service		Wheeling	
	Untreated	Treated	Untreated	Treated	Untreated	Treated	Untreated	Treated	Untreated	Treated
FY 94-95	335	412	222	275	222	275	222	275	N/A	N/A
7/95 - 12/96	344	426	231	289	229	286	229	286	N/A	N/A
1/97 - 12/97	349	431	236	294	233	290	233	290	262	141
1/98 - 12/98	349	431	236	294	233	290	244	301	262	141
1/99 - 12/99	349	431	236	294	233	290	255	312	*	*

1/00 - 12/00	349	431	236	294	233	290	266	323	*	*
1/01 - 12/01	349	431	236	294	233	290	277	334	*	*
1/02 - 12/02	349	431	236	294	233	290	288	345	*	*

Note: Reclaimed column deleted since each program is contractual and effective rates may vary.

*As available service only, determined on a case by case basis.

Connection Maintenance Charge: \$50.00 per cubic feet per second of capacity per month, not to exceed a maximum charge per connection of \$5,000 per month.

**F. San Bernardino Valley Municipal Water District Rules, Regulations
and Rates for the Sale and Delivery of Water.**

Effective January 1, 2003

RESOLUTION No. 888

**SAN BERNARDINO VALLEY MUNICIPAL WATER DISTRICT
RULES, REGULATIONS AND RATES FOR THE SALE AND DELIVERY
OF WATER**

Be it hereby resolved by the Board of Directors of the San Bernardino Valley Municipal Water District that effective January 1, 2003 the following rules, regulations and rates for the sale and delivery of water are hereby enacted and further that Resolution No. 876 is hereby superseded.

ARTICLE I

DEFINITIONS

Section 1.01. Definitions. As used herein the terms set forth below shall be defined as follows and shall have such meaning unless the context indicates otherwise.

- a. Applicant: Any person or entity applying to the District for water service.
- b. Board: The Board of Directors of the District.
- c. Customer: An applicant for service, an approved applicant, or any person or entity receiving water service from the District.
- d. District: The San Bernardino Valley Municipal Water District.
- e. General Manager: The General Manager of the District.

ARTICLE II

QUALIFICATIONS FOR SERVICE

Section 2.01. Application for Service. Any applicant seeking a new, or revised, water service shall make application therefor in such form as may be prescribed by the General Manager. The General Manager shall investigate each such application and may require submission of additional information. The application and such additional information as may be required, together with the General Manager's recommendation thereon, shall be submitted to the Board for action thereon.

Section 2.02. Identification of Applicant and Intended Use. Each application shall state the legal capacity of the Applicant, e.g., public agency (indicating

the type of agency and the law under which formed), corporation (indicating the state of incorporation and other pertinent information), partnership, limited liability company, or individual, and whether the Applicant is a public utility or mutual water company. The application shall also state the nature of the intended use or uses to which the water will be put, e.g., municipal, industrial, agricultural, domestic, groundwater recharge, etc., and the general geographic area of service. The application shall contain such information as may be required by the General Manager to show that the plan of use is in the public interest and in accord with good water resources management requirements as required by Section 5.03. Service may be refused if the Board determines it is not in the public interest or will not result in good water resources management.

Section 2.03. Nature of Service. Each application shall state whether untreated water or treated water meeting Department of Health Services standards for drinking water is required. Applications for untreated water shall contain such information as is necessary to assure that the District will not become subject to the obligations imposed by public health standards with respect thereto.

Section 2.04. Back-up Capacity. Each application shall contain information indicating that the Applicant is capable of sustaining its service requirements from independent sources during the period of any interruption of service from District facilities.

Section 2.05. Treatment Facilities. Each application shall contain information indicating that the Applicant has or will install such treatment facilities as may be required for the use or uses to which the Applicant intends to put the water.

Section 2.06. Power Generation Rights. Each application for service shall contain an assignment to the District of all rights to the generation of power from the use of the water supplied. Said rights shall extend to the generation of power as the water flows through District facilities and as it flows through such of the Applicant's facilities as are reasonably adapted for such purpose or can be reasonably adapted for such purpose. It shall be

Effective January 1, 2003

the responsibility of the District to pay its expenses for any exercise of its right to generation of power pursuant hereto, and no Applicant shall be subjected to extra expense in connection therewith. In appropriate cases, the District and the Applicant may install joint facilities for power recovery purposes. In the event the District determines not to exercise its rights, the Applicant may undertake to install recovery facilities for its own account.

Section 2.07. Right to Recapture Return Flows. Each application shall contain the agreement of the Applicant that the District shall have the prior right to recapture and reclaim any return flow from water supplied by the District to the Applicant or others, directly or indirectly, which reaches any groundwater basins within the District.

Section 2.08. Indemnity for Ground Water Recharge. Each application shall contain the agreement of the Applicant to provide the District with indemnity for damages to any lessee of the Applicant arising out of groundwater spreading operations of the District, or performed by others for it, in all circumstances in which the lease between the Applicant and the Applicant's lessees protects the Applicant against such damages.

Section 2.09. New Application May Be Required from Existing Customers. The District may require a new application from existing customers whenever there are changed circumstances or conditions which, in the judgment of the District, make a new application necessary or desirable.

Section 2.10. Application for Groundwater Replenishment. Except in cases in which the District undertakes to conduct groundwater replenishment operations on its own motion, an application shall be required whenever request is made that the District engage in groundwater replenishment operations, whether delivery is to be made to a customer, or such groundwater replenishment is to be conducted by or at the direction of the District without delivery to a customer.

Section 2.11. Water Conservation Program Requirements. It is the policy of the District to encourage all of its customers to implement active water

Effective January 1, 2003

conservation programs providing for installation and use of low-flow water fixtures, and for the encouragement of use of drought resistant landscape materials and efficient landscape watering methods. In accordance with such policy and the provisions of Sections 2.02 and 5.03, all applicants and customers shall establish and maintain a water conservation program designed to implement the foregoing conservation policies, and shall submit such evidence thereof as may be required by the General Manager.

ARTICLE III

INSTALLATION AND CONNECTION OF FACILITIES

Section 3.01. General Authorization. All service connections, including valves, pipe, meters and other equipment required, shall be installed at the expense of the Customer after authorization by the Board.

Section 3.02. Procedure. The District shall cause a service connection to be constructed pursuant to a written request by a Customer in accordance with plans and specifications approved by the General Manager and by an authorized representative of the Customer. Except as otherwise specifically authorized by the District, all equipment and materials required for constructing the service connection shall be acquired by the District in its customary manner, or the District may utilize therefor suitable equipment and materials on hand.

Section 3.03. Facilities Included; Ownership by the District. The service connection shall include the facilities for diversion of water from the District's system and for delivery of such water into the pipeline distribution system of the Customer or the Customer's distributor. The service connection up to and including the fitting connecting with the pipeline through which the Customer will receive water delivered through the service connection, which shall include metering instruments and a cabinet therefor, shall be the property of the District and shall be operated, maintained and controlled by the District.

Section 3.04. Back-flow. The Customer may be required to install adequate back-flow or back-siphonage equipment approved by the District or demonstrate adequate facilities exist to prevent back-flow into District

Effective January 1, 2003

facilities. The District solely shall determine when back-flow facilities are required and the type of device required. The device(s), when required, shall be installed at the service connection point and shall be maintained by the Customer by means satisfactory to the District.

Section 3.05. Pressure Surges (Water Hammer). All service connection applications shall include data showing that any operation (gravity or pumping from pipeline, if required) will not damage any District facility. Such data shall include, but is not limited to, surge analysis, structural calculation and hydraulic analysis for any pumping or delivery condition requested.

Section 3.06. Deposit of Estimated Costs. The costs of constructing the service connection shall be estimated by the General Manager, who shall inform the Customer's representative regarding the amount of such estimate. The total amount of such estimate shall be deposited by the Customer in advance of any action toward construction of the service connection, including all items peculiar only to a given service connection, or it may be deposited in stages, upon approval of the Board. Costs shall include reasonable allowance for costs of design, supervision and overhead, in addition to direct costs of labor, equipment and materials.

Section 3.07. Use of Deposit. Such deposit or deposits shall be held and used to defray the costs of constructing the service connection, and the District shall not be required to proceed with the construction of the service connection in the absence of sufficient funds deposited therefor.

Section 3.08. Settlement Upon Completion. Upon completion of construction of the service connection, the District shall render to the Customer a statement of all costs, in accordance with the customary practice of the District, incurred by the District in constructing the service connection; if such costs shall exceed the sum of money theretofore deposited by the Customer with the District the Customer promptly shall pay to the District the amount by which such costs shall exceed such deposit; and if such costs be less than the said sum of money so deposited, any unexpended balance of such deposit shall be returned by the District to the Customer.

Effective January 1, 2003

Section 3.09. Easement for Service Connection. The Customer shall cause to be granted to the District or the fee owner of the affected land, such easement as may be necessary in the opinion of the General Manager for the construction, operation, maintenance and repair of the service connection. Said easement and the grant thereof shall be approved by the District; provided, however, that fee title to the property required for such service connection may be acquired in the same manner as an easement and in lieu of an easement if the General Manager and Customer agree that it would be advantageous to do so. Customer shall provide, or the District may obtain, at Customer's sole cost and expense, a policy of title insurance insuring that clear title to the easement, or fee, is vested in the District, subject to any encumbrances that have been approved in writing by the General Manager. The amount of title insurance shall be determined by the acquisition costs, or as may be reasonably determined by the General Manager.

Section 3.10. Maintenance of Service Connection. Upon completion of the service connection, the District shall be responsible for any subsequent maintenance, alteration, reconstruction or relocation of such service connection except changes which are requested by the Customer, which changes shall be handled as a new service connection. However, prior to the release of water by the District into the pipeline distribution system of the Customer or of the Customer's affected distributor, each agency shall install its own flow control device or devices as a means of maintaining uniform flow.

Section 3.11. Environmental Requirements. Public agency customers are responsible for ensuring that the obligations of lead agencies as described in the California Environmental Quality Act and its implementing guidelines are fulfilled. The District shall fulfill all other obligations that may arise from its involvement in construction of the service connections and shall provide such information as it has available which is necessary to insure compliance with the Act and its implementing guidelines.

Section 3.12. Fair Value of Outlet. The fair value of an outlet installed during pipeline construction will be established by the General Manager at the time a service connection is constructed at the outlet, and the charge to

Effective January 1, 2003

a Customer for such an outlet will be based on this fair value; provided that any outlet larger than 24 inches or any outlet installed after a pipeline is placed in operation shall be charged for its actual cost.

ARTICLE IV

WATER SERVICE AND OPERATIONS

Section 4.01. Limitations of State Contract Service. All water service made pursuant to the District's State Contract shall be subject to all of the terms and conditions of the said State Contract and to any conditions affecting the State's source of supply or the availability of supply.

Section 4.02. Interruptible Service. All water supplied by the District shall be served upon an interruptible basis. Interruption may be occasioned either due to the terms of the District's State Contract or by reason of the District's requirements for maintenance and operation of its facilities, including the design and operating criteria established pursuant to Section 5.05. The District shall notify its customers in advance of any nonstandard interruption to the extent reasonably feasible. Due to the nature of the District's facilities and the potential modes of service required, the District cannot guarantee any specific level of pressure.

Section 4.03. Quality. Except as otherwise specifically agreed, all water served by the District is raw untreated water and shall not be supplied for domestic purposes by any customer without such treatment as may be required to comply with all applicable laws and regulations. The District makes no representation as to the quality of the water it supplies as to its suitability for any particular purpose. Reference is hereby made to Article 19 of the District's State Contract, but the District does not undertake to monitor the extent of the State's compliance or noncompliance with such standards, but only to transport said supply to its customers. With respect to any exchange water or other supply available to the District, the District shall be responsible only to exercise ordinary care in transporting and safeguarding said supply and shall not be responsible for the quality of such water as it is received by the District. The District may, however, reject any supply which is unsuitable by

Effective January 1, 2003

reason of contamination or pollution which render it impractical for the District Customers to treat and use the same.

Section 4.04. Special Classes of Service. The Board may from time to time establish special classes of service reflecting the special conditions applicable to such service. Such classes may include, but shall not be limited to the following:

- a. Service outside the District.
- b. Service to property not subject to District taxes.
- c. Service with a special rate in accordance with the terms of annexation to the District.
- d. Service pursuant to special contractual arrangements with the District.

Where service is made pursuant to the Santa Ana River - Mill Creek Cooperative Water Project Agreement, such service shall be made pursuant to the terms of that Agreement and any regulations applicable thereto, as well as these rules. Deliveries pursuant to the Cooperative Water Project Agreement will be made at the delivery points specified therein, to the members thereof in accordance with the instructions of the management committee and project manager and it shall be the responsibility of the member agency to make delivery to its Customers. Deliveries pursuant to the Cooperative Water Project Agreement will be limited strictly to the quantities and delivery points specified therein and any other deliveries (whether for quantities in excess of entitlements or for delivery at other delivery points), either directly or indirectly, will be subject to application and approval under these rules.

Water supplied for delivery to property not within the District or not subject to District taxes may be subject to a special outside rate as authorized by Water Code Section 71613. The outside rate may be applicable to any District delivery, wherever made, which makes water available for use on property not subject to District taxes, including (1) direct delivery to such property, (2) delivery to such property by exchange (e.g., delivery of District water

within the District to make other water supplies otherwise used within the District available for use on property outside the District), and (3) any delivery ordered to make water available for use outside the District.

Section 4.05. Water Rates. All water rates for water service made by the District shall be established from time to time by the Board of Directors of the District. Water Rates are established in Appendix A hereto. Appendix A may be revised from time to time independent of any other revisions to these Rules and Regulations.

Section 4.06. Pressure and Flow Conditions. All Applicants and Customers are required to accept such conditions of pressure and service as are provided by the distribution system at the location of the proposed connection, and shall agree to hold the District harmless from any damages arising out of low pressure or high pressure conditions or interruptions of service. The District will not make deliveries at flows less than one cubic foot per second or for a period less than 24 hours. Orders for water must be placed one week in advance of actual delivery.

Section 4.07. Payment of Water Charges. Water charges are due and payable at the office of the District on date of mailing bill to the Customer or his agent as designated in the application and shall be delinquent 30 days thereafter. Service may be discontinued without further notice if payment of the water charge is not made prior to the date such charge becomes delinquent.

Section 4.08. Meter Testing. When the accuracy of a water meter is questioned, the District upon request will cause an official test to be made at its own expense. The Customer shall be duly notified of the time and place of such test and may be present when any such test is made by the District. The meter will be tested on variable rates of delivery and if the average registration is more than two percent in excess of the actual quantity of water passing through the meter, the District shall refund to the Customer the overcharge based upon the test, for the prior twelve months, unless it can be shown that the error was due to some cause for which the date can be fixed. In the latter case, the overcharge shall be computed back to and not beyond such time. Any undercharge determined upon the basis of the test may be billed to the Customer on a

Effective January 1, 2003

similar basis. Requests for a test within 12 months of a prior test will be at the Customer's expense unless the meter is determined to be over-registering deliveries as determined in this section.

Section 4.09. Deleted.

Section 4.10. Contents of Estimates. Each estimate furnished by a Customer shall contain, as a minimum, for each service connection for each month of the year beginning with the succeeding July 1, and for the entire Customer for each month of the succeeding four years, the following information:

1. The quantity of water to be delivered by District to the Customer.
2. The quantity of water to be used for:
 - a. Domestic, industrial, and municipal purposes, exclusive of groundwater replenishment by spreading or injecting.
 - b. Groundwater replenishment by spreading or injecting; and
 - c. Agricultural purposes.

The estimate shall constitute the member public agency's request for deliveries for the first of the five years covered therein.

Section 4.11. Revision of Estimates. The Customer may make revisions to any of its estimates upon reasonable notice to the District.

Section 4.12. Order for Water. Any Customer requesting delivery of water from the District shall place such order in writing. The General Manager may prescribe a suitable form for use in placement of water orders and may revise the same from time to time. Any customer water order shall be accompanied by a copy of the ordinance, resolution, minute order, or other action of the board or other governing body of the Customer which authorizes the placement of the order.

Section 4.13. Outside Sales. Water may be sold for use outside the District only when the Board finds there is

Effective January 1, 2003

a surplus above that required by consumers within the District, as authorized by Water Code Section 71612. All such sales shall be limited to the period of surplus and shall terminate when the water available is required for use within the District. Any sales for delivery within or without the District which makes water available for use on property outside the District shall be treated as an outside sale for such purposes, including (1) direct delivery to property outside the District, (2) delivery to property outside the District by exchange (e.g., delivery of District water within the District to make other water supplies otherwise used within the District available to use on property outside the District), and (3) any delivery ordered to make water available for use outside the District.

ARTICLE V

GENERAL

Section 5.01. Liability and Indemnification. Neither the District nor any of its officers, agents, or employees shall be liable for the control, carriage, handling, use, disposal, or distribution of water supplied by the District to a Customer after such water has been delivered to such Customer; nor for claim of damage of any nature whatsoever, including but not limited to property damage, personal injury or death, arising out of or connected with the control, carriage, handling, use, disposal, or distribution of such water beyond the point of such delivery; and the Customer shall indemnify and hold harmless the District and its officers, agents, and employees from any such damages or claims of damages. Neither the Customer nor any of its officers, agents, or employees shall be liable for the control, carriage, handling, use, disposal, or distribution of water prior to such water being delivered to the Customer; nor for claim of damage of any nature whatsoever, including but not limited to property damage, personal injury or death, arising out of or connected with the control, carriage, handling, use, disposal, or distribution of such water prior to its delivery to such Customer; and the District shall indemnify and hold harmless the Customer and its officers, agents, and employees from any such damages or claims of damages.

Section 5.02. Return Flows. All water sold and delivered by the District is subject to the right of the

Effective January 1, 2003

District to recapture and reclaim any return flow reaching any groundwater basin within the District.

Section 5.03. Water Resources Management Requirements. In order to promote good water resources management and prevent waste of water, undesirable groundwater conditions, and unnecessary expense to the inhabitants and taxpayers of the District, the District may encourage or require the use of alternate supplies where such is required to prevent waste or undesirable groundwater conditions and/or to prevent unnecessary expense to the District's inhabitants and taxpayers. The District may also encourage the use of special conservation facilities or devices where appropriate.

Section 5.04. Power Generation Rights. It is the policy of the District to retain the power generation rights from the use of the water which it supplies, without thereby imposing extra expense upon its Customers, and to cooperate with its Customers in installing power recovery facilities where appropriate.

Section 5.05. Design and Operating Criteria. The District's facilities have been designed and planned within the limits of available funding to meet water service and other needs within the District to the maximum extent feasible and to allow for maximum flexibility for use of facilities for different purposes and in different modes of operation. Such a system necessarily makes it impossible to always respond automatically to service demands when facilities are needed for conflicting demands or modes of service. It is the applicant's responsibility to consult with District staff to obtain information as to the District's requirements for connection and the capabilities of the District system before designing facilities for connection to the District system.

Section 5.06. Indemnification for Water Spreading. The District shall require execution of an agreement indemnifying the District and its officers, agents, and employees against liability for damages of any nature whatsoever, including but not limited to property damage, personal injury, or death, arising out of or resulting from, or connected with, groundwater replenishment by spreading or injecting which is conducted by or at the direction of the District pursuant to the application or request of a customer or water purveyor or in which water

Effective January 1, 2003

is to be delivered by the District to a customer or water purveyor for such use.

ENACTED: October 7, 1985 by Resolution No. 711

AMENDED: August 1, 1988 by Resolution No. 732

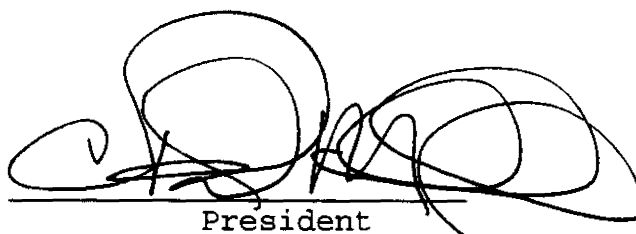
AMENDED: March 20, 1989 by Resolution No. 739

AMENDED: April 15, 1991 by Resolution No. 778

AMENDED: April 20, 1993 by Resolution No. 803

AMENDED: November 18, 2002

Enacted: November 18, 2002



President

ATTEST:



Secretary

(SEAL)

Effective January 1, 2003

Appendix A: Water Rates

Unless otherwise provided by contract, the following rates shall apply.

- a. **Tier I** water (Plan ahead): Water ordered, and agreed to be purchased, by a customer prior to December 31 of a year, for delivery in the following calendar year. Payment, at the Base Price, for 1/12 of the water ordered due at the end of each Tier I month. The order shall specify the amount ordered for each month of the year.
- b. **Tier II** water (Seasonal Storage): Water ordered, and agreed to be purchased, by a customer for groundwater recharge prior to December 31 of a year for delivery in January, February, March, April, or May of the following year. Payment, at the Base Price, for 1/5 of water ordered is due at the end of each Tier II month. The order shall specify the amount ordered for each month of the year.
- c. **Tier III** water (Spot Market purchase): Water ordered by a customer at any time during the calendar year for delivery within the same calendar year.
- d. **Base Energy Charge**: Unless otherwise established by the Board, the unadjusted cost of energy, in dollars per acre foot, to recoup the energy costs for delivering State Water Project water for use throughout the District. Said charge shall include the cost of pumping water from the Sacramento Delta to the Devil Canyon Afterbay as well as the energy cost of using the Crafton Hills Pump Station and the Greenspot Pump Station. The Board hereby establishes the Base Energy Charge at \$108 per acre foot.
- e. **Base Conveyance Charge**: A charge per acre foot of water delivered to a customer set to recoup a portion of the internal operations and maintenance costs of the District as set by the Board from time to time. The Board hereby establishes the Conveyance Charge at \$40 per acre foot.
- f. **Base Price**: The sum of the Base Energy Charge and the Base Conveyance Charge. The Base Price shall be charged to Customers for water delivered for use within the District which is not subject to the Tier I or II discount nor the Tier III surcharge.

Effective January 1, 2003

- g. **Tier I discount:** For water ordered pursuant to Tier I and paid for by January 31 of the calendar year a discount of 15% off of the Base Price.
- h. **Tier II discount:** For water ordered pursuant to Tier II and paid for the calendar year by January 31 of the calendar year a discount of 20% off of the Base Price.
- i. **Tier III surcharge:** For water ordered pursuant to Tier III a surcharge of 25% will be added to the Base Price.
- j. **Outside Rate:** A charge per acre foot of water purchased from the District for use outside the boundary of the District. The rate to be set according to the then current DWR Bulletin 132 Appendix B, Table B-24, "Total Equivalent Unit Charge". Bulletin 132-02 rate is \$378.89/acre foot. At the sole discretion, the District Board may approve or not approve any request for deliveries outside the District.

**Maps and Legal Descriptions
Of County Boundary Exchange
Within the Agua Mansa Area**

Attachment 3



San Bernardino Valley Municipal Water District

1350 SOUTH "E" STREET - P. O. BOX 5906 - SAN BERNARDINO, CALIFORNIA 92412-5906 -(909) 387-9200
FAX (909) 387-9247

August 29, 2003

RECEIVED
SEP 02 2003

Kathleen Rollins-McDonald
Acting Executive Officer
Local Agency Formation Commission
175 West Fifth Street, 2nd Floor
San Bernardino CA 92415-0490

Re: Proposed Agua Mansa County Line Boundary Line Change

Dear Kathy -

This letter is to confirm the San Bernardino Valley Municipal Water District's ("District") understanding of the remaining portion of the process which needs to occur related to the exchange of territory between Riverside and San Bernardino Counties in the Agua Mansa Industrial Park area. Yesterday's meeting in Riverside at the County Civic Center was most helpful in gaining an understanding of how this process has proceeded to date and what needs to be done to finish the process with regard to the public entities other than the two counties. For the purpose of clarity I have attached a copy of the map passed out at the meeting.

As you are aware this District's concern is related to our State Water Project ("SWP") contract which bars unauthorized deliveries from one SWP Contractor's service area into another's, in this case from this District into the service area of The Metropolitan Water District of Southern California ("MWDSC") whose member agency for the area is Western Municipal Water District of Riverside County ("Western"). The retail agency for both areas is West Valley Water District ("West Valley"), whose primary service area and sources of water lie within this District.

With regard to the northern area being transferred from San Bernardino County to Riverside County, no action needs to be taken with regard to this District's boundary. The area is to be served by West Valley and is already within this District. It will merely become an additional area of this District that is in Riverside County.

Directors and Officers

EDWARD B. KILLGORE
Division I

GEORGE A. AGUILAR
Division II

PAT MILLIGAN
Division III

MARK BULOT
Division IV

STEVE COPELAN
Division V

ROBERT L. REITER
General Manager
and Chief Engineer

With regard to the southern area being transferred from Riverside County to San Bernardino County, the actions to be taken would be the same as those taken during the previous extensions of West Valley's service area into Riverside County in order to provide service to the Crestmore Heights area slightly to the west of this current activity. Those actions are:

1. Detachment of the area from Western.
2. Detachment of the area from MWDSC.
3. Annexation of the area to this District.

While doing the detachments and annexation of just the southern area will resolve this District's concerns for the present situation, I did note on the map you had yesterday that West Valley has additional service area adjacent to the area in question which will need similar attention in the future as West Valley water service is extended to the additional service area. To avoid additional future processing efforts with respect to this additional service area, it would appear appropriate to consider larger detachments and annexation as part of the current process to resolve the boundary disparities in this area once and for all.

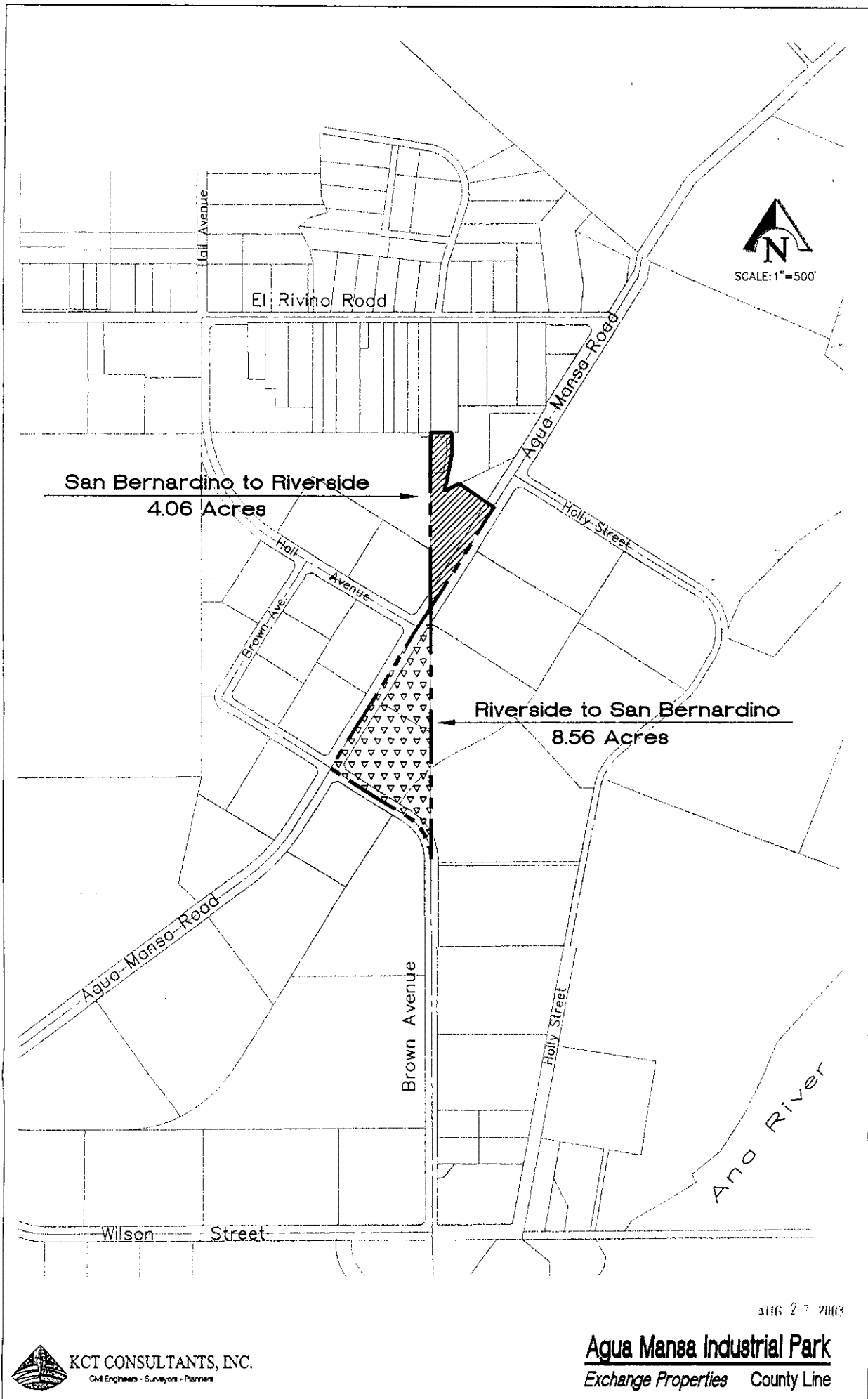
Please let me know of any actions this District needs to take in order to complete this process.

Very truly yours,



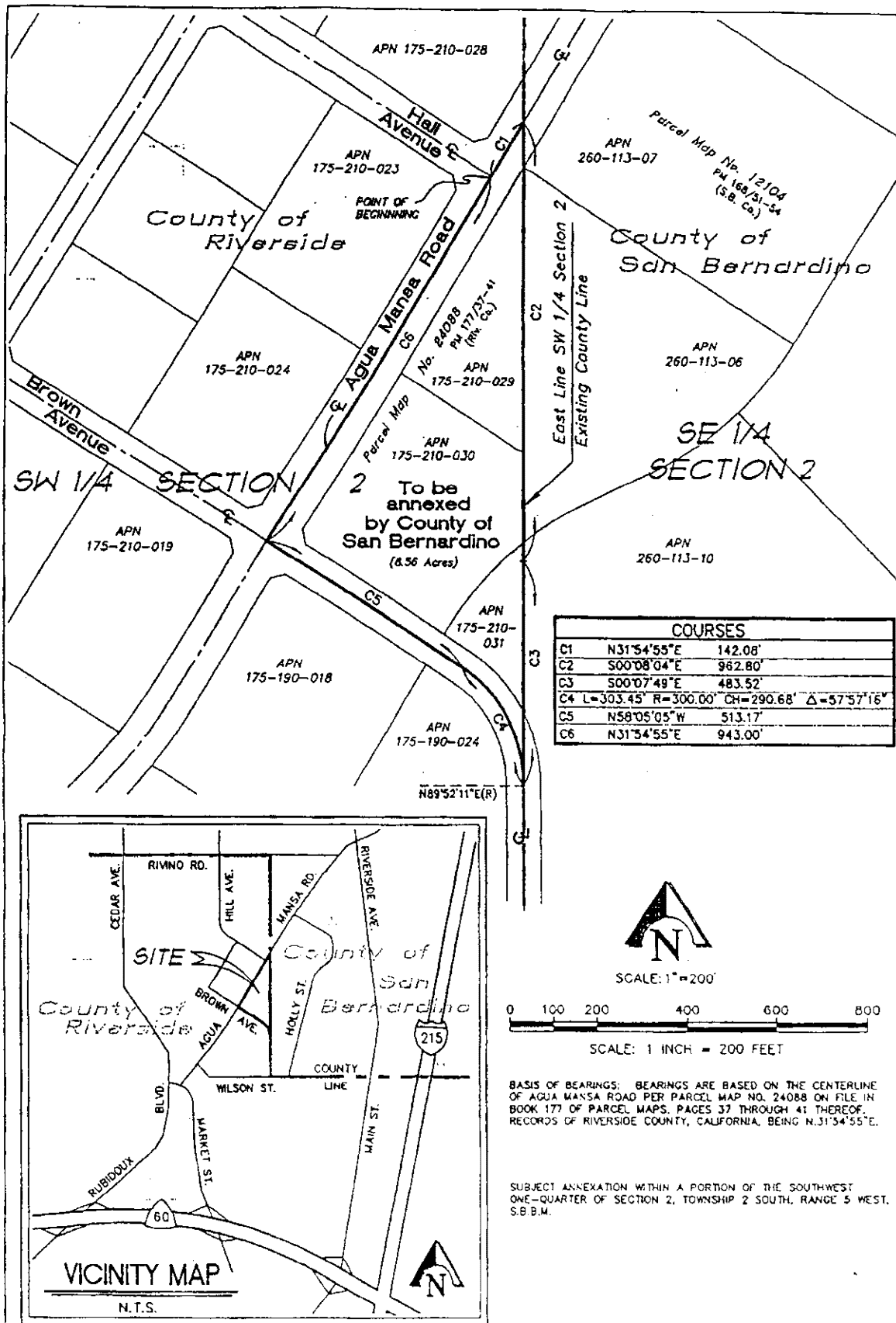
Robert L. Reiter
General Manager
and Chief Engineer

cc: Butch Araiza - WVWD
Don Harriger - WMWD
Ron Gastelum - MWDSC

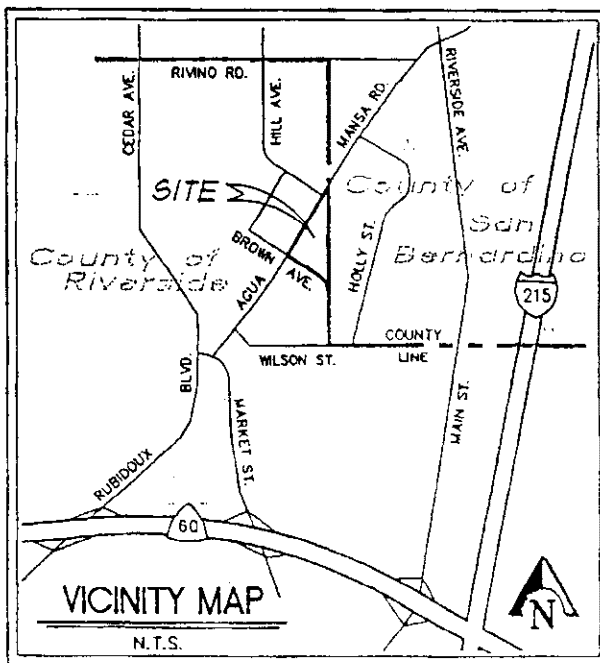


KCT CONSULTANTS, INC.
Civil Engineers - Surveyors - Planners

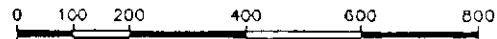
Agua Mansa Industrial Park
Exchange Properties County Line



COURSES		
C1	N31°54'55"E	142.08'
C2	S00°08'04"E	962.80'
C3	S00°07'49"E	483.52'
C4	L=303.45' R=300.00' CH=290.68' Δ=57°57'16"	
C5	N58°05'05"W	513.17'
C6	N31°54'55"E	943.00'



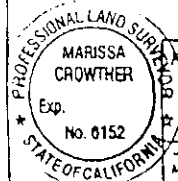
SCALE: 1"=200'



SCALE: 1 INCH = 200 FEET

BASIS OF BEARINGS: BEARINGS ARE BASED ON THE CENTERLINE OF AGUA MANSA ROAD PER PARCEL MAP NO. 24088 ON FILE IN BOOK 177 OF PARCEL MAPS, PAGES 37 THROUGH 41 THEREOF, RECORDS OF RIVERSIDE COUNTY, CALIFORNIA, BEING N.31°54'55"E.

SUBJECT ANNEXATION WITHIN A PORTION OF THE SOUTHWEST ONE-QUARTER OF SECTION 2, TOWNSHIP 2 SOUTH, RANGE 5 WEST, S.B.M.



Prepared under the supervision of:

MARISSA CROWTHER

PLS 6152 DATE

COUNTY LINE ADJUSTMENT
BETWEEN
RIVERSIDE AND SAN BERNARDINO COUNTIES



KCT CONSULTANTS, INC.
Civil Engineers - Surveyors - Planners

Sheet 1 of 1

Scale: 1"=200'

March 6, 2003

NO 1251-02

March 6, 2003

ANNEXATION TO SAN BERNARDINO COUNTY

COUNTY LINE ADJUSTMENT BETWEEN RIVERSIDE AND SAN BERNARDINO COUNTIES

That portion of the Southwest one-quarter of Section 2, Township 2 South, Range 5 West, San Bernardino Meridian, State of California, located in the County of Riverside, and being more particularly described as follows:

BEGINNING at the centerline intersection of Agua Mansa Road and Hall Avenue, as shown by Parcel Map No. 24088, on file in Book 177 of Parcel Maps, Pages 37 through 41 thereof, Records of said Riverside County;

Course 1: Thence N.31°54'55"E. along centerline of said Agua Mansa Road, a distance of 142.08 feet, to the East line of said Southwest one-quarter of Section 2, being the existing County Line between Riverside County and San Bernardino County;

Course 2: Thence S.0°08'04"E. along said East line, a distance of 962.80 feet, to an angle point therein as shown on said Parcel Map No. 24088;

Course 3: Thence S.0°07'49"E., continuing along said East line and the southerly prolongation thereof, a distance of 483.52 feet, to the beginning of curve on the centerline of Brown Avenue as shown on Parcel Map No. 24088-1, on file in Book 177 of Parcel Maps, Pages 37 through 41 thereof, Records of Riverside County, California;


Course 4: Thence northwesterly along said centerline, along a non-tangent curve, concave southwesterly, having a radius of 300.00 feet, through an angle of 57°57'16" and an arc length of 303.45 feet (the initial radial line bears N.89°52'11"E.);

Course 5: Thence N.58°05'05"W. along said centerline of Brown Avenue, a distance of 513.17 feet, to the intersection of the centerline of said Agua Mansa Road;

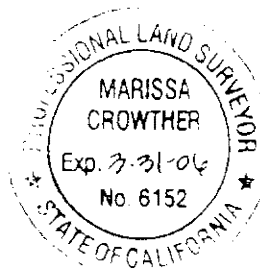
Course 6: Thence N.31°54'55"E., along the centerline of said Agua Mansa Road, a distance of 943.00 feet, to the Point of Beginning.

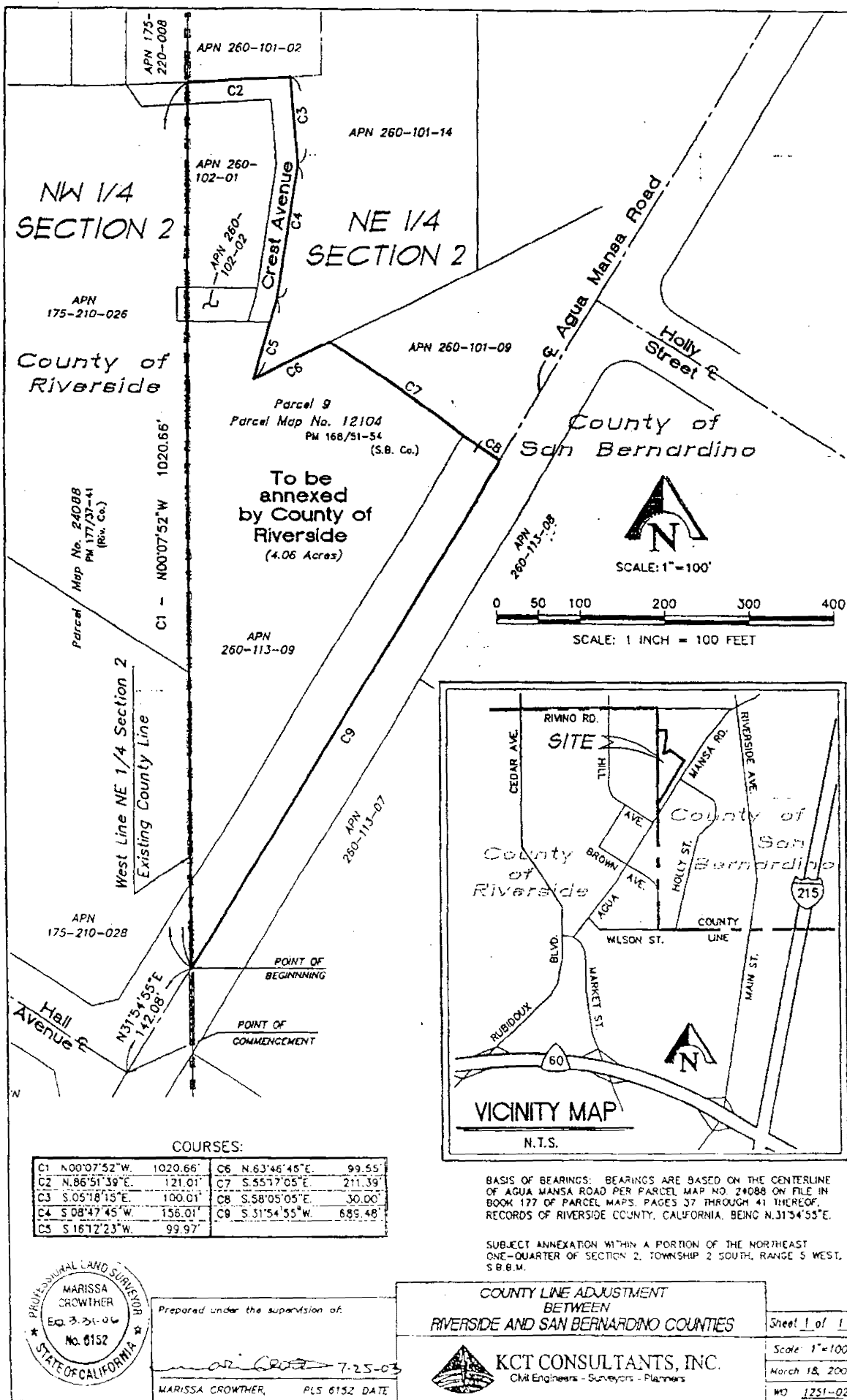
The above described parcel of land contains 8.56 acres, more or less.

Prepared under the supervision of:
KCT CONSULTANTS, INC.


Marissa Crowther, PLS 6152

Date: 7-25-03





March 6, 2003
Revised July 22, 2003

**ANNEXATION TO RIVERSIDE COUNTY
COUNTY LINE ADJUSTMENT
BETWEEN
RIVERSIDE AND SAN BERNARDINO COUNTIES**

That portion of Northeast one-quarter of Section 2, Township 2 South, Range 5 West, San Bernardino Meridian, State of California, located in the County of San Bernardino, and being more particularly described as follows:

COMMENCING at the centerline intersection of Agua Mansa Road and Hall Avenue, as shown by Parcel Map No. 24088, on file in Book 177 of Parcel Maps, Pages 37 through 41 thereof, Records of Riverside County, California;

Thence N.31°54'55"E. along the centerline of said Agua Mansa Road, a distance of 142.08 feet, to the West line of said Northeast one-quarter of Section 2, being the existing County Line between Riverside County and San Bernardino County, and being the **POINT OF BEGINNING**;

Course 1: Thence N.0°07'52"W. along said East line, a distance of 1020.96 feet, to the northerly line of Crest Avenue as shown by map of Record of Survey on file in Book 84 of Record of Surveys, Pages 30 through 34 thereof, Records of Riverside County, California;

Course 2: Thence N.86°51'39"E. along said northerly line, a distance of 121.01 feet, to the northwest corner of said Crest Avenue

Course 3: Thence S.05°18'15"E. along the easterly line of said Crest Avenue, a distance of 100.01 feet, to an angle point therein;

Course 4: Thence S.08°47'45"W. continuing along said easterly line, a distance of 156.01 feet, to an angle point therein;

Course 5: Thence S.16°12'23"W. continuing along said easterly line, also being along the northeasterly line of Parcel 9 of Parcel Map No. 12104, on file in Book 168 of Parcel Maps, Pages 51 through 54 thereof, Records of San Bernardino County, California, a distance of 99.97, to an angle point in said northeasterly line;

Course 6: Thence N.63°46'46"E. continuing along said northeasterly line, a distance of 99.55 feet, to the northeasterly corner thereof;



Annexation to Riverside County
County Line Adjustment
Riverside and San Bernardino Counties

Course 5: Thence S.55°17'05"E. continuing along the northeasterly line of said Parcel 9,
a distance of 211.39 feet;

Course 6: Thence S.58°05'05"E., a distance of 30.00 feet, to the centerline of said Agua
Mansa Road, as shown by said Parcel Map No. 12104;

Course 7: Thence S.31°54'55"W. along said centerline, a distance of 689.48 feet, to the
Point of Beginning.

The above described parcel of land 4.06 acres, more or less.

Prepared under the supervision of:
KCT CONSULTANTS, INC.

Marissa Crowther
Marissa Crowther, PLS 6152

Date: 7-25-03



**Response from Tom Dodson
and Associates**

Attachment 4

TOM DODSON & ASSOCIATES
2150 N. ARROWHEAD AVENUE
SAN BERNARDINO, CA 92405
TEL (909) 882-3612 • FAX (909) 882-7015
E-MAIL tda@tstonramp.com



November 7, 2003

Ms. Kathleen Rollings-McDonald
Local Agency Formation Commission
175 West Fifth Street, Second Floor
San Bernardino, CA 92415-0490

Dear Jim:

LAFCO 2916 consists of a service review for the San Bernardino Valley Municipal Water District (District) pursuant to Government Code Section 56430 and Sphere of Influence Study Pursuant to Government Code 56425. If approved by the Commission, the service and Sphere review would not result in any change to the services or the Sphere of Influence for the District. Based on the above proposal, it appears that LAFCO 2916 can be implemented without causing any physical changes to the environment or any adverse environmental impacts. The service and Sphere review does not appear to have any potential to alter the existing physical environment in any manner. Since no projects are pending or will occur as a result of approving this review, no physical changes in the environment are forecast to result from approving the action before the Commission.

Without a potential for causing physical changes in the environment, I recommend that the Commission find that a Statutory Exemption applies to LAFCO 2916 under the Section 15061 (b) (3) which states: "A project is exempt from CEQA if the activity is covered by the general rule that CEQA applies only to projects which have the potential for causing significant effect on the environment. Where it can be seen with certainty that there is no possibility that the activity in question may have a significant effect on the environment, the activity is not subject to CEQA." It is my opinion, and recommendation to the Commission, that this circumstance applies to LAFCO 2916.

Based on a review of LAFCO 2916 and the pertinent sections of CEQA and the State CEQA Guidelines, I conclude that LAFCO 2916 does not constitute a project under CEQA and adoption of the Statutory Exemption and filing of a Notice of Exemption is the most appropriate determination to comply with the CEQA process for this action. The Commission can approve the review and findings for this action and I recommend that you notice LAFCO 2916 as statutorily exempt from CEQA for the reasons outlined in the State CEQA Guideline sections cited above. The Commission needs to file a Notice of Exemption with the County Clerk to the Board for this action once the hearing is completed.

A copy of this exemption should be retained in LAFCO's project file to serve as verification of this evaluation and as the CEQA environmental determination record. If you have any questions, please feel free to give me a call.

Sincerely,

A handwritten signature in black ink, appearing to read "Tom Dodson". The signature is written in a cursive, flowing style.

Tom Dodson

Draft Resolution No. 2791

Attachment 5

DRAFT

PROPOSAL NO.: LAFCO 2916

HEARING DATE: NOVEMBER 19, 2003

RESOLUTION NO. 2791

A RESOLUTION OF THE LOCAL AGENCY FORMATION COMMISSION OF THE COUNTY OF SAN BERNARDINO MAKING DETERMINATIONS ON LAFCO 2916, A SERVICE REVIEW AND SPHERE OF INFLUENCE UPDATE FOR THE SAN BERNARDINO VALLEY MUNICIPAL WATER DISTRICT.

On motion of Commissioner _____, duly seconded by Commissioner _____, and carried, the Local Agency Formation Commission adopts the following resolution:

WHEREAS, a service review mandated by Government Code Section 56430 and a sphere of influence update mandated by Government Code Section 56425 have been conducted by the Local Agency Formation Commission of the County of San Bernardino (hereinafter referred to as "the Commission") in accordance with the Cortese-Knox-Hertzberg Local Government Reorganization Act of 2000 (Government Code Sections 56000 et seq.); and,

WHEREAS, at the times and in the form and manner provided by law, the Executive Officer has given notice of the public hearing by this Commission on this matter; and,

WHEREAS, the Executive Officer has reviewed available information and prepared a report including her recommendations thereon, the filings and report and related information having been presented to and considered by this Commission; and,

WHEREAS, the public hearing by this Commission was held upon the date and at the time and place specified in the notice of public hearing and in an order or orders continuing the hearing; and,

WHEREAS, at the hearing, this Commission heard and received all oral and written protests; the Commission considered all objections and evidence which were made, presented, or filed; and all persons present were given an opportunity to hear and be heard in respect to any matter relating to the review, in evidence presented at the hearing; and,

WHEREAS, a statutory exemption has been issued pursuant to the provisions of the California Environmental Quality Act (CEQA) indicating that this service review and sphere of influence update are statutorily exempt from CEQA and such exemption has been adopted by this Commission. The Clerk has been directed to file a Notice of Exemption within five working days of adoption of this resolution; and,

WHEREAS, based on presently existing evidence, facts, and circumstances filed with the Local Agency Formation Commission and considered by this Commission, it is determined that the sphere of influence for the San Bernardino Valley Municipal Water District should be expanded to include the area of the County Boundary Exchange within the Agua Mansa area and should be affirmed as it currently exists for the balance of the area, as more specifically described on the maps attached to this resolution; and,

WHEREAS, the following findings are made in conformance with Government Code Section 56430 and local Commission policy:

1. Infrastructure Needs and Deficiencies.

The District has adopted a Regional Water Master Plan that addresses this issue; a copy is on file in the LAFCO and District office for public review. No specific issues relevant to this factor were identified by the District.

2. Growth and Population.

The District provides service to approximately 325 square miles (approximately 208,000 acres) within all or portions of the incorporated and unincorporated areas of the Cities of Fontana, Rialto, Colton, San Bernardino, Grand Terrace, Loma Linda, Highland, Redlands, and Yucaipa. The current population of the District is estimated at 576,000. The District estimates a population of 973,000 in the Year 2025.

3. Financing Opportunities and Constraints.

The District is funded through its share of the general property tax levy, Bonds, State of California Proposition 13 and 50, United States Environmental Protection Agency Grants, State funding opportunities, Federal funding opportunities, and other agencies through participation in joint facilities. No specific financing opportunities or constraints were identified by the District.

4. Cost Avoidance Opportunities.

The District's facilities have been constructed with the participation of other agencies, thereby reducing costs and eliminating parallel facilities. The District works to reduce costs by sharing field personnel with other agencies. Examples include the recent Department of Water Resources East Branch Extension Project. Rather than hire additional field staff, DWR will be contracting with SBVMWD to provide the field personnel to operate and maintain the East Branch Extension. In reference to the District's current level of service, it meets or exceeds the requirements of most retail water agencies within its service area.

5. Rate Restructuring.

The District is responsible for maintaining the safe yield of the San Bernardino groundwater basin. The basin is plagued by groundwater contamination plumes. The District is a water wholesaler and sells water from the State Water Project to supplement the retail water supply. Faced with the contamination plumes in the area, the primary users of the basin are forced to evaluate other options to meet their water demand. One option is to purchase State Water Project water from SBVMWD. The District has established a new rate structure, outlined in the response document on page 14, noting that the base rate for water for delivery is \$148 per acre foot.

6. Opportunities for Shared Facilities.

Nearly all of the District's facilities have been constructed through participation with other agencies. The following is a summary of joint financed/shared facilities:

FACILITY(S)	STATUS	PARTICIPATING AGENCIES
Lytle Creek Pipeline	Complete	San Gabriel Valley MWD
Foothill Pipeline, SARC Pipeline, Greenspot Pipeline, Yucaipa Pipeline, East Branch Extension	Complete	San Gorgonio Pass Water Agency
Baseline Feeder, Wells and Pipeline	Complete	West Valley Water District (formerly West San Bernardino CWD), City of Rialto, Riverside Highland Water Company
Central Feeder Pipeline, San Bernardino Reservoir and Pump Station, Redlands Reservoir and Pump Station	Conceptual Design Complete	Metropolitan Water District
Phase 1A Reservoir	Preliminary Design Complete	City of San Bernardino
Baseline Feeder Extension South	Preparing Construction Documents	Western Municipal Water District, City of San Bernardino, City of Riverside
Baseline Feeder West Extension	Preparing Preliminary Design	Metropolitan Water District, Inland Empire Utilities Agency, Fontana Water Company
Mentone Feeder Pipeline	Preparing Preliminary Design	San Gorgonio Pass Water Agency, California Department of Water Resources
Mentone Reservoir and Pump Station	Preparing Preliminary Design	San Gorgonio Pass Water Agency, California Department of Water Resources
Seven Oaks Dam Plunge Pool Pipeline	Preparing Preliminary Design	Western Municipal Water District
Devil Canyon Bypass	Preparing Preliminary Design	Western Municipal Water District

7. Government Structure Options.

The District accomplishes its Basin Recharge role in the Yucaipa, San Timoteo, Colton-Rialto, Lytle, and Bunker Hill basins primarily by using the facilities of the San Bernardino County Flood Control District. Occasionally, the District also uses the spreading grounds of the San Bernardino Valley Water Conservation District (whose lands completely lie within the boundaries of SBVMWD) to recharge the sub-area of the District.

8. Management Efficiencies.

The District has a small staff which it supplements with professional consultants to complement District staff and improve productivity. This management philosophy minimizes the possibility of laying off personnel in time of financial crisis. The District is proactive in using technology to improve the production and efficiency of its small staff. The District participates in a number of Joint Powers Agreements/Agencies to increase efficiency.

9. Local Accountability and Governance.

The District is governed by a five-member Board elected from separate political divisions. Each division is sized based upon population and adjusted following each census. The District maintains a web site, and conforms to provisions of the Brown Act requiring open meetings. No other relevant issues concerning this factor have been identified; and,

WHEREAS, the following findings are made in conformance with Government Code Section 56425 and local Commission policy:

1. PRESENT AND PLANNED LAND USES

The full range of urban, suburban, and rural land uses are included within the boundaries and current sphere of influence of the San Bernardino Valley Municipal Water District. The sphere of influence update and service review have no potential to change present or planned land uses within the sphere, since the only change proposed would be to accommodate the County Boundary Exchange, approved by the Boards of Supervisors for Riverside and San Bernardino Counties on October 28, 2003. The SBVMWD endorses this approach by indicating that no sphere of influence changes are contemplated within the next five years except for the request that the County Boundary Exchange be acknowledged.

2. PRESENT AND PROBABLE NEED FOR PUBLIC FACILITIES AND SERVICES IN THE AREA

The only change to the District sphere of influence proposed through this review relates to the County Boundary Exchange approved by the Boards of Supervisors for Riverside and San Bernardino Counties. The District has adopted a master plan for service which addresses this issue, and is on file in the District office.

3. PRESENT CAPACITY OF PUBLIC FACILITIES AND ADEQUACY OF PUBLIC SERVICES PROVIDED

The change to the District sphere of influence proposed through this review relates to the County Boundary Exchange previously described. The District has adopted a master plan for service which addresses this issue through discussion of the overlay of the West Valley Water District and the Rubidoux Community Services District. This document is on file in the District office.

4. COMMUNITIES OF INTEREST IN THE AREA

RESOLUTION NO. 2791

The change proposed to the District's sphere of influence does not affect the community of interest. The Commission, therefore, determines that this factor of determination is not relevant to this review, as permitted by Government Code Section 56425.

5. OTHER FINDINGS

- A. It is requested that the Local Agency Formation Commission for Riverside County address the County Boundary Exchange within the Agua Mansa area as it relates to the sphere of influence of the San Bernardino Valley Municipal Water District within their County.
- B. Notice of this hearing has been published as required by law in The Sun, a newspaper of general circulation in the area. As required by state law, individual notification was provided to affected and interested local agencies, County departments, and those individuals wishing mailed notice.
- C. Comments from landowners and any affected local agency have been reviewed and considered by the Commission in making its determination; and,

WHEREAS, the following functions and services are provided by the District and are as outlined in the Rules and Regulations affecting the functions and services of Special Districts (originally adopted on November 10, 1976); and Exhibit "A" of the Rules and Regulations lists each special district and its services and functions pursuant to the requirements of Section 6 of the Rules and Regulations; and,

WHEREAS, the Local Agency Formation Commission of the County of San Bernardino is required to review and update the Exhibit "A" of the Rules and Regulations of Special Districts to outline the services provided:

SERVICE	FUNCTIONS
Water	Wholesale, retail, agricultural, domestic, replenishment, conservation
Sewer	Collection, transportation, treatment, reclamation, disposal
Power	Generation, distribution
Electrical Production	
Electrical Transmission	
Park & Recreation	Development, operation, recreation (cannot perform the function within an existing agency with park and recreation services)

WHEREAS, pursuant to the provisions of Government Code Section 56425(h) the range of services provided by the San Bernardino Valley Municipal Water District are limited those identified above, and such range of services shall not be changed unless approved by this Commission; and,

WHEREAS, having reviewed and considered the findings as outlined above, the Commission modifies the sphere of influence to include the area of the County Boundary Exchange effective December 1, 2003 and affirms and upholds the balance of the sphere of influence for the San Bernardino Valley Municipal Water District as it currently exists, and is depicted on the maps attached to this report.

NOW, THEREFORE, BE IT RESOLVED by the Local Agency Formation Commission of the County of San Bernardino, State of California, that this Commission shall consider the territory described on the attached map as being within the sphere of influence of the San Bernardino Valley Municipal Water District, it being fully understood that establishment of such a sphere of influence is a policy declaration of

6

1. THIS AND THE FOLLOWING PAGE ARE THE SAME BUT DIFFERENT BRIGHTNESS