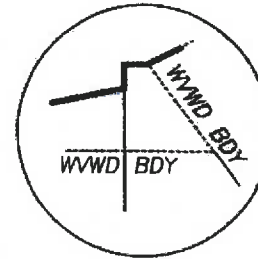
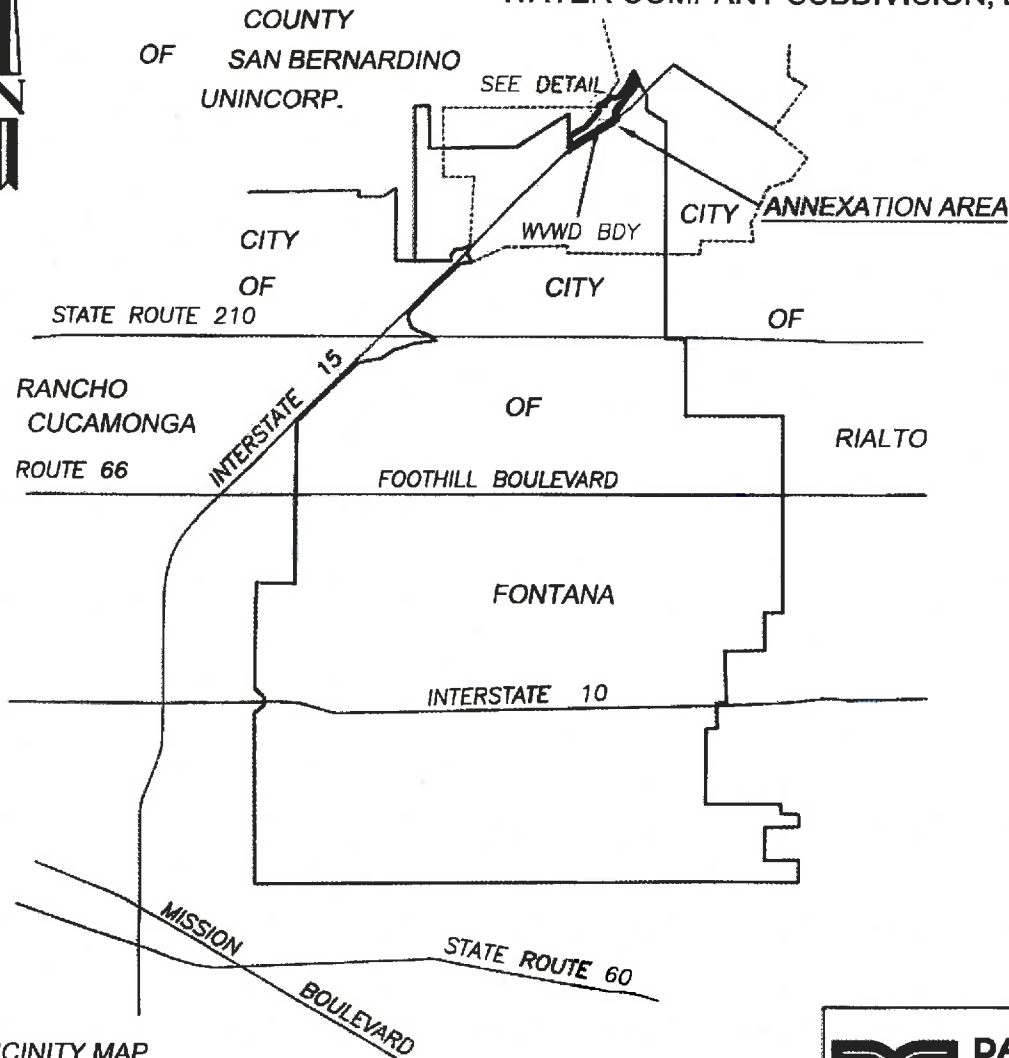





EXHIBIT A
S1/2 SEC. 7 AND N1/2 SEC. 18, T. 1 N., R. 5 W., S.B.M.
PORTIONS OF LOT 11 AND LOT 19 OF SEMI-TROPIC LAND AND
WATER COMPANY SUBDIVISION, BK. 6, PG. 12



DETAIL
NOT TO SCALE

LEGEND

-  ANNEXATION AREA
-  WVWD BDY WEST VALLEY WATER DISTRICT BOUNDARY
-  CITY OF FONTANA MUNICIPAL BOUNDARY

VICINITY MAP
NOT TO SCALE

ANNEXATION ACREAGE = 146.234 ACRES, MORE OR LESS.



DAVID EVANS AND ASSOCIATES INC.
4141 Inland Empire Blvd.
Suite 250
Ontario California 91764
Phone: 909.481.5750

LAFCO
ANNEXATION
FONTANA FIRE PROTECTION DISTRICT
DETACHMENT
SAN BERNARDINO COUNTY FIRE PROTECTION DISTRICT
SHEET 1 OF 6

EXHIBIT A

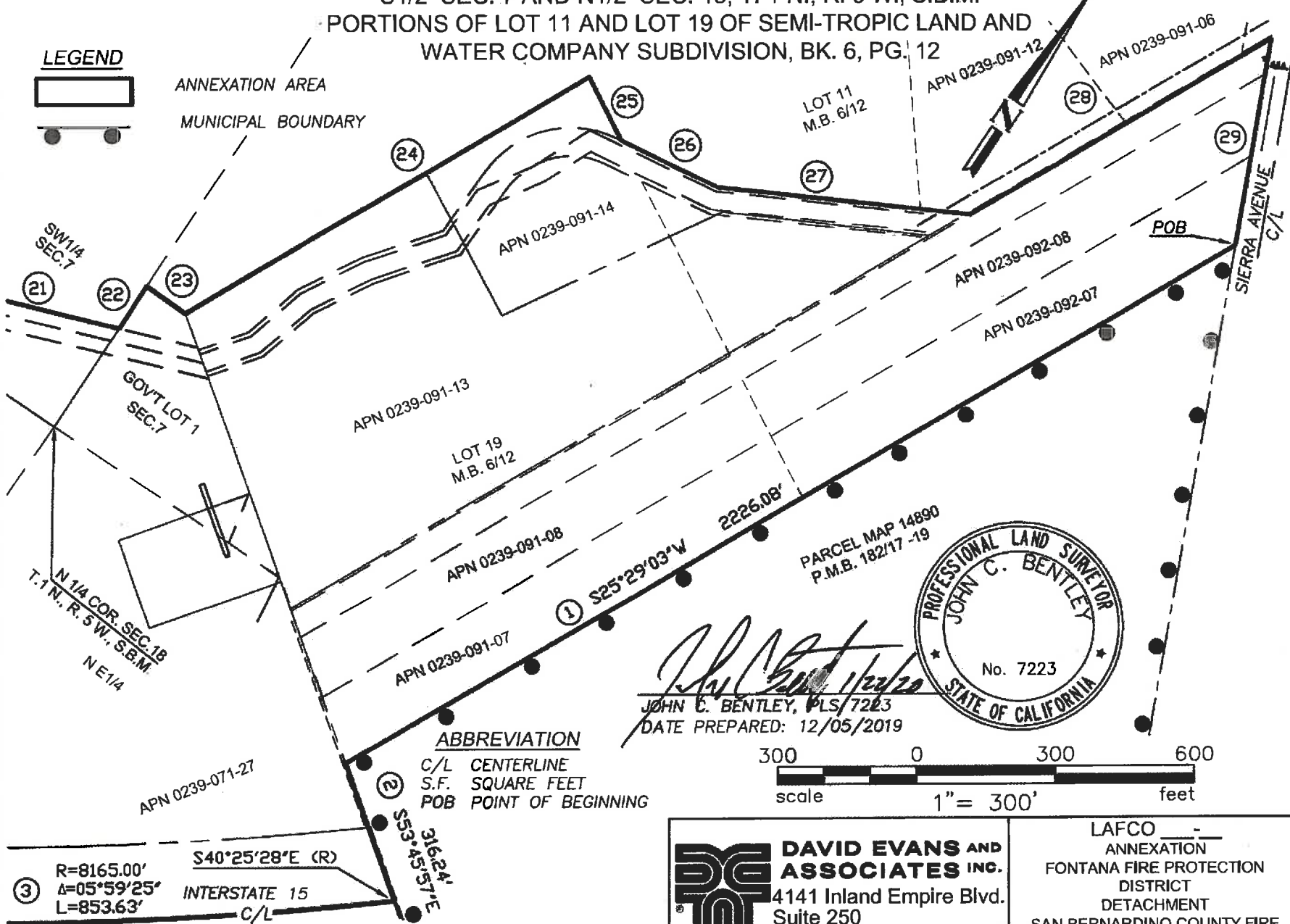
SHEET 2 OF 6

S1/2 SEC. 7 AND N1/2 SEC. 18, T. 1 N., R. 5 W., S.B.M.
 PORTIONS OF LOT 11 AND LOT 19 OF SEMI-TROPIC LAND AND
 WATER COMPANY SUBDIVISION, BK. 6, PG. 12

LEGEND



ANNEXATION AREA
 MUNICIPAL BOUNDARY



N 1/4 COR. SEC. 18
 T. 1 N., R. 5 W., S.B.M.
 NE 1/4

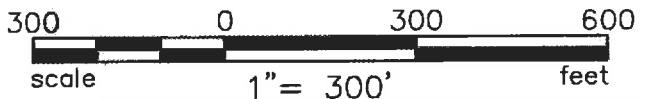
GOV'T LOT 1
 SEC. 7

PARCEL MAP 14890
 P.M.B. 182/17 -19



John C. Bentley
 JOHN C. BENTLEY, PLS/7223
 DATE PREPARED: 12/05/2019

ABBREVIATION
 C/L CENTERLINE
 S.F. SQUARE FEET
 POB POINT OF BEGINNING



③ R=8165.00' S40°25'28"E (R)
 Δ=05°59'25" INTERSTATE 15
 L=853.63' C/L

ANNEXATION ACREAGE = 146.234 ACRES, MORE OR LESS.

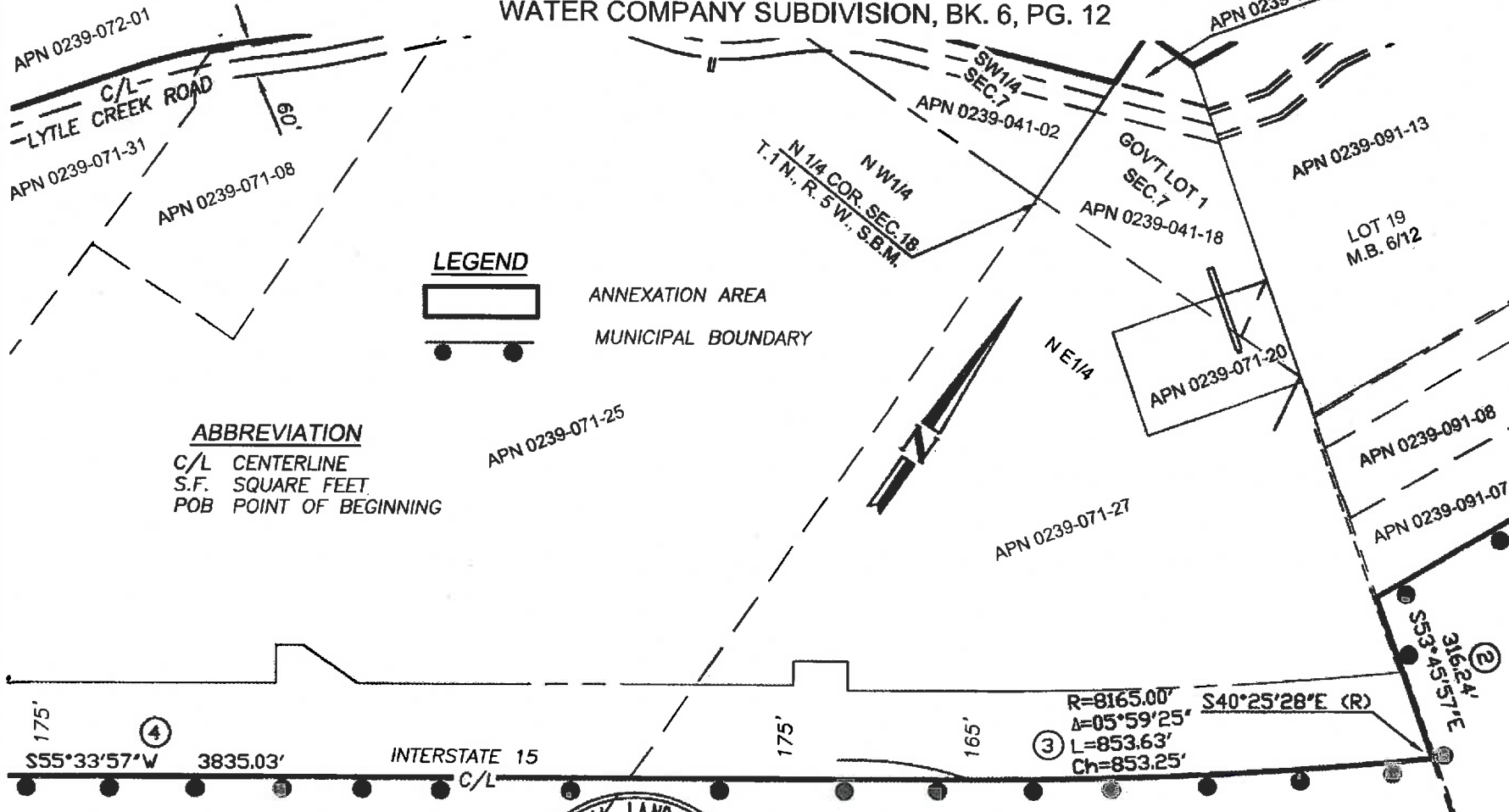
DAVID EVANS AND ASSOCIATES INC.
 4141 Inland Empire Blvd.
 Suite 250
 Ontario California 91764
 Phone: 909.481.5750

LAFCO
 ANNEXATION
 FONTANA FIRE PROTECTION DISTRICT
 DETACHMENT
 SAN BERNARDINO COUNTY FIRE PROTECTION DISTRICT
 SHEET 2 OF 6

EXHIBIT A

SHEET 3 OF 6

S1/2 SEC. 7 AND N1/2 SEC. 18, T. 1 N., R. 5 W., S.B.M.
 PORTIONS OF LOT 11 AND LOT 19 OF SEMI-TROPIC LAND AND
 WATER COMPANY SUBDIVISION, BK. 6, PG. 12



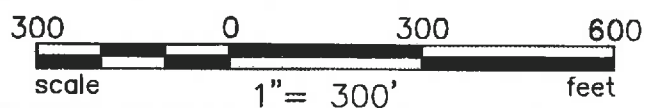
LEGEND

-  ANNEXATION AREA
-  MUNICIPAL BOUNDARY

ABBREVIATION

- C/L CENTERLINE
- S.F. SQUARE FEET
- POB POINT OF BEGINNING

175' ④ S55°33'57"W 3835.03' INTERSTATE 15 C/L 175' 165' ③ R=8165.00' Δ=05°59'25" S40°25'28"E (R) L=853.63' Ch=853.25' 316.24' ② S53°45'57"E



John C. Bentley
 JOHN C. BENTLEY, PLS 7223
 DATE PREPARED: 12/05/2019



ANNEXATION ACREAGE = 146.234 ACRES, MORE OR LESS.

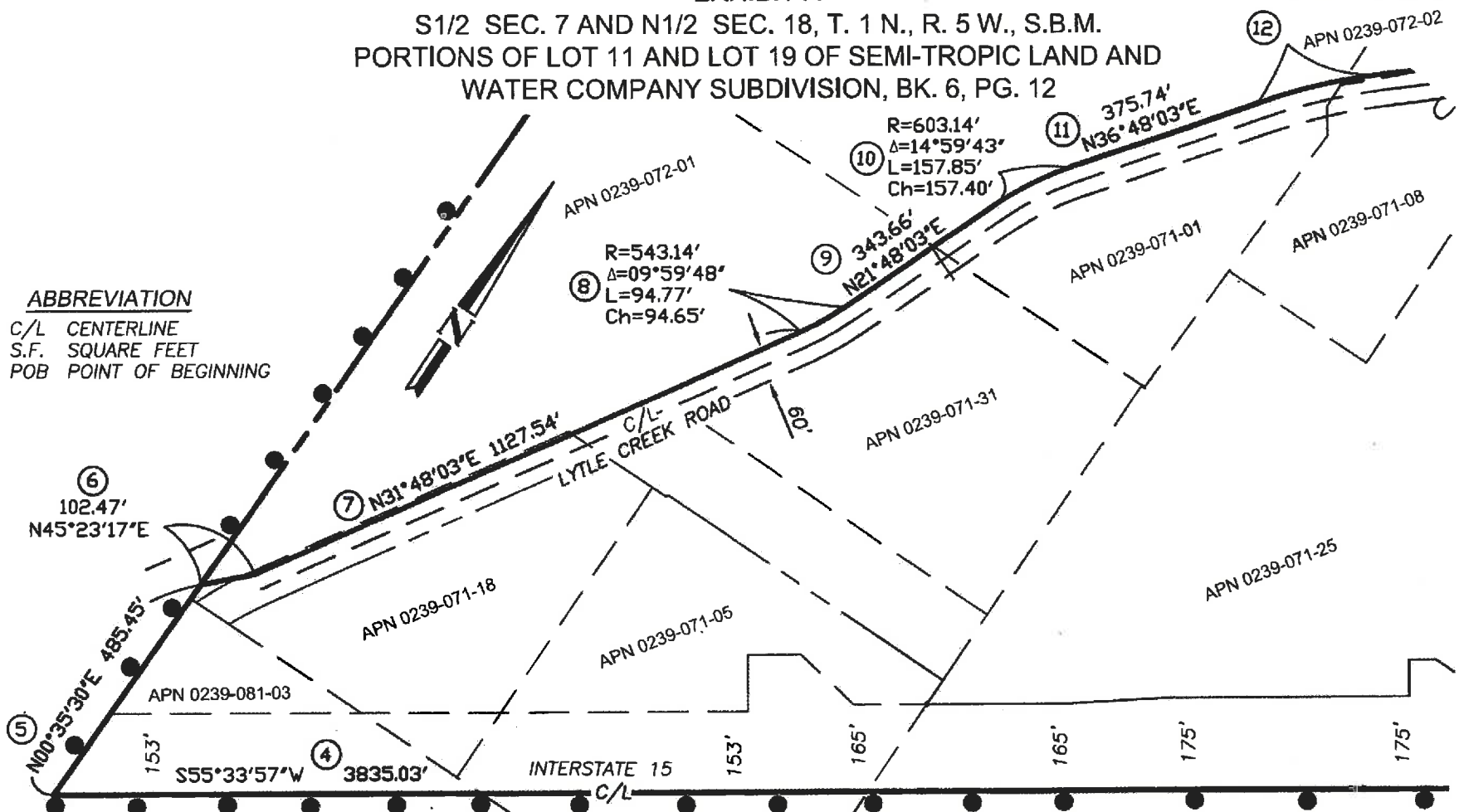
DAVID EVANS AND ASSOCIATES INC.
 4141 Inland Empire Blvd.
 Suite 250
 Ontario California 91764
 Phone: 909.481.5750

LAFCO
 ANNEXATION
 FONTANA FIRE PROTECTION DISTRICT
 DISTRICT
 DETACHMENT
 SAN BERNARDINO COUNTY FIRE PROTECTION DISTRICT
 SHEET 3 OF 6

EXHIBIT A
S1/2 SEC. 7 AND N1/2 SEC. 18, T. 1 N., R. 5 W., S.B.M.
PORTIONS OF LOT 11 AND LOT 19 OF SEMI-TROPIC LAND AND
WATER COMPANY SUBDIVISION, BK. 6, PG. 12

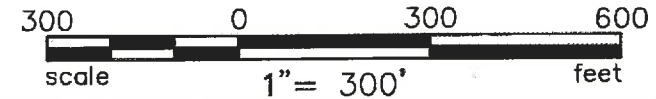
SHEET 4 OF 6

ABBREVIATION
 C/L CENTERLINE
 S.F. SQUARE FEET
 POB POINT OF BEGINNING



LEGEND

-  ANNEXATION AREA
-  MUNICIPAL BOUNDARY



John C. Bentley
 JOHN C. BENTLEY, PLS 7223
 DATE PREPARED: 12/05/2019



ANNEXATION ACREAGE = 146.234 ACRES, MORE OR LESS.

DAVID EVANS AND ASSOCIATES INC.
 4141 Inland Empire Blvd.
 Suite 250
 Ontario California 91764
 Phone: 909.481.5750

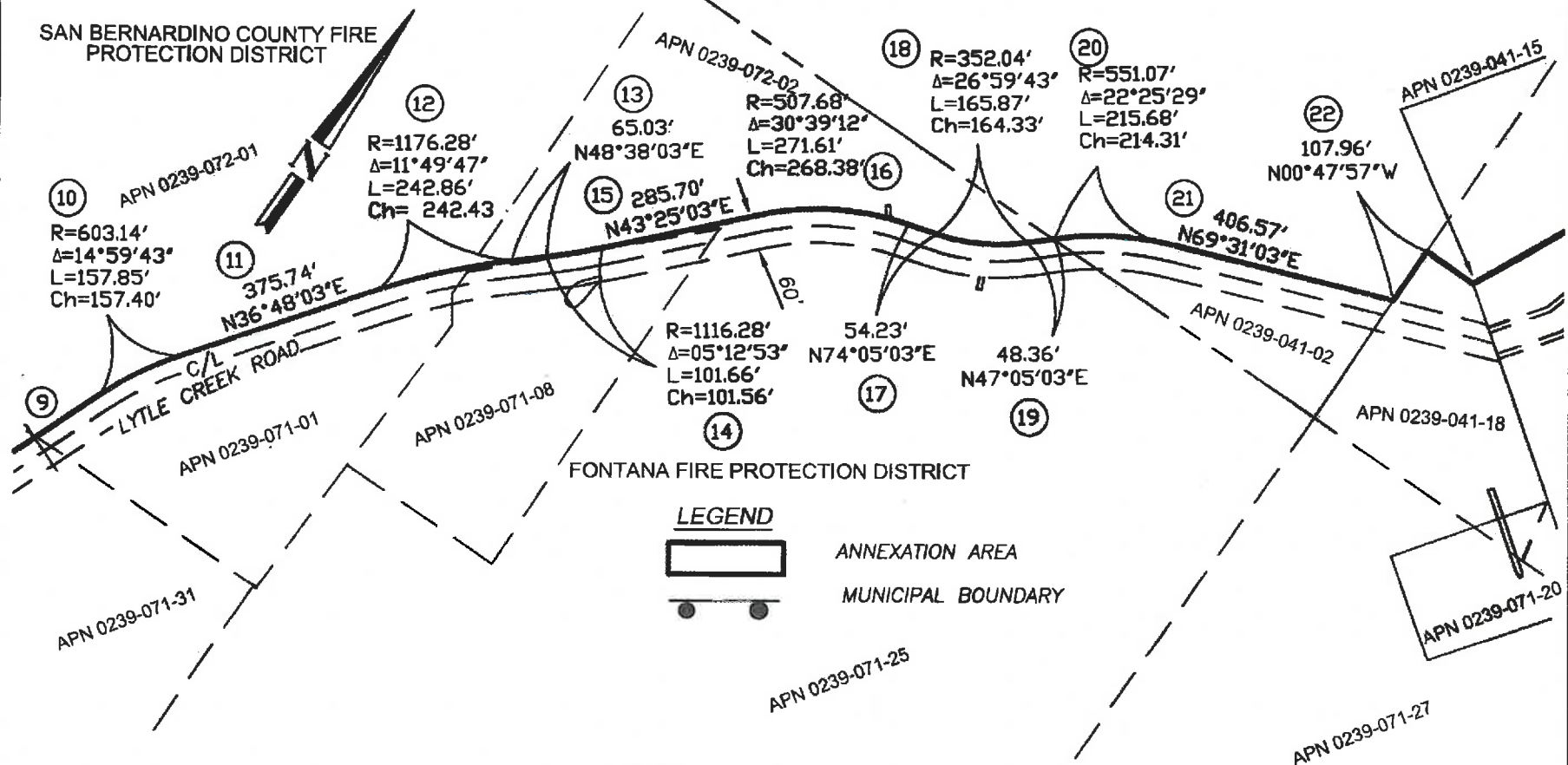
LAFCO
 ANNEXATION
 FONTANA FIRE PROTECTION DISTRICT
 DETACHMENT
 SAN BERNARDINO COUNTY FIRE PROTECTION DISTRICT
 SHEET 4 OF 6

Drawing Name: P:\C:\PRK15L0001\0400CAD\SV\EXHIBITS\SCE Easement Vicinity exhibit.dwg Tab Name: ANNEXATION EXHIBIT 3
 Last Opened: Jan 22, 2020 - 11:59am by: jcbe

EXHIBIT A

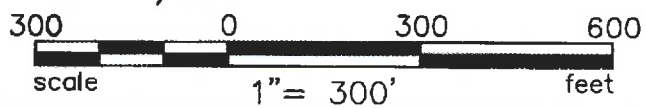
SHEET 5 OF 6

S1/2 SEC. 7 AND N1/2 SEC. 18, T. 1 N., R. 5 W., S.B.M.
 PORTIONS OF LOT 11 AND LOT 19 OF SEMI-TROPIC LAND AND
 WATER COMPANY SUBDIVISION, BK. 6, PG. 12



ABBREVIATION
 C/L CENTERLINE
 S.F. SQUARE FEET
 POB POINT OF BEGINNING

John C. Bentley
 JOHN C. BENTLEY, PLS 7223
 DATE PREPARED: 12/05/2019



ANNEXATION ACREAGE = 146.234 ACRES, MORE OR LESS.

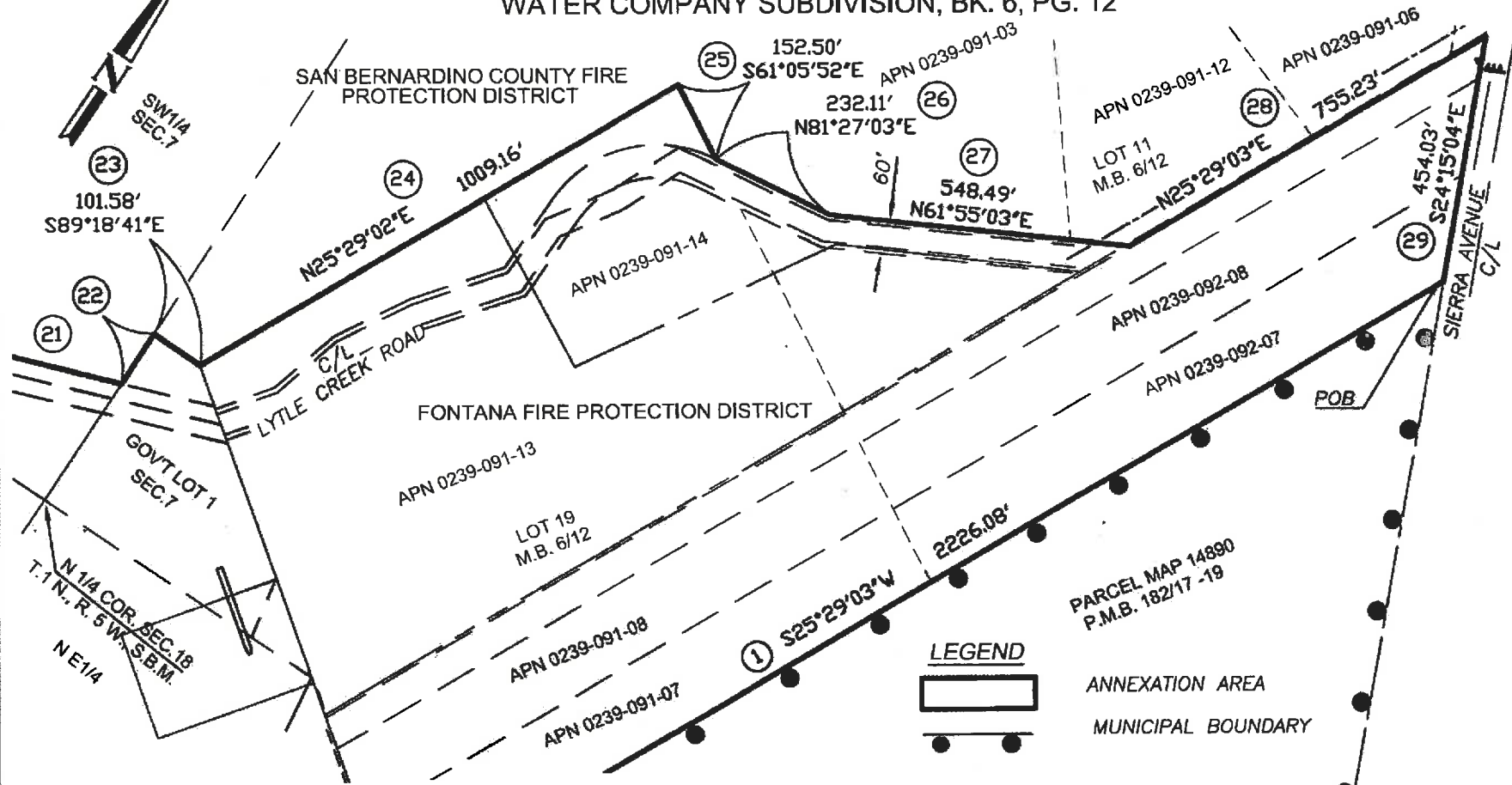
DAVID EVANS AND ASSOCIATES INC.
 4141 Inland Empire Blvd.
 Suite 250
 Ontario California 91764
 Phone: 909.481.5750

LAFCO
 ANNEXATION
 FONTANA FIRE PROTECTION DISTRICT
 DETACHMENT
 SAN BERNARDINO COUNTY FIRE PROTECTION DISTRICT
 SHEET 5 OF 6

Drawing Name: P:\C:\PRK\15\0001\0400CAD\SV\EXHIBITS\SCE Easement Vicinity exhibit.dwg Tab Name: ANNEXATION EXHIBIT 4
 Last Opened: Jan 22, 2020 - 1:53pm by: jcb

EXHIBIT A

S1/2 SEC. 7 AND N1/2 SEC. 18, T. 1 N., R. 5 W., S.B.M.
 PORTIONS OF LOT 11 AND LOT 19 OF SEMI-TROPIC LAND AND
 WATER COMPANY SUBDIVISION, BK. 6, PG. 12



ABBREVIATION

C/L CENTERLINE
 S.F. SQUARE FEET
 POB POINT OF BEGINNING

John C. Bentley
 JOHN C. BENTLEY, WLS 7223
 DATE PREPARED: 12/05/2019

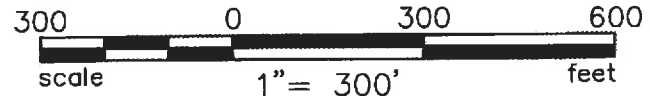


ANNEXATION ACREAGE = 146.234 ACRES, MORE OR LESS.

LEGEND



ANNEXATION AREA
 MUNICIPAL BOUNDARY



DAVID EVANS AND ASSOCIATES INC.
 4141 Inland Empire Blvd.
 Suite 250
 Ontario California 91764
 Phone: 909.481.5750

LAFCO
 ANNEXATION
 FONTANA FIRE PROTECTION DISTRICT
 DETACHMENT
 SAN BERNARDINO COUNTY FIRE PROTECTION DISTRICT
 SHEET 6 OF 6