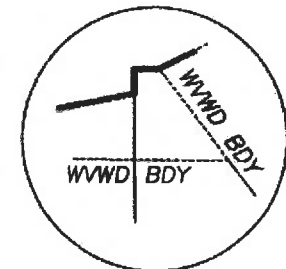
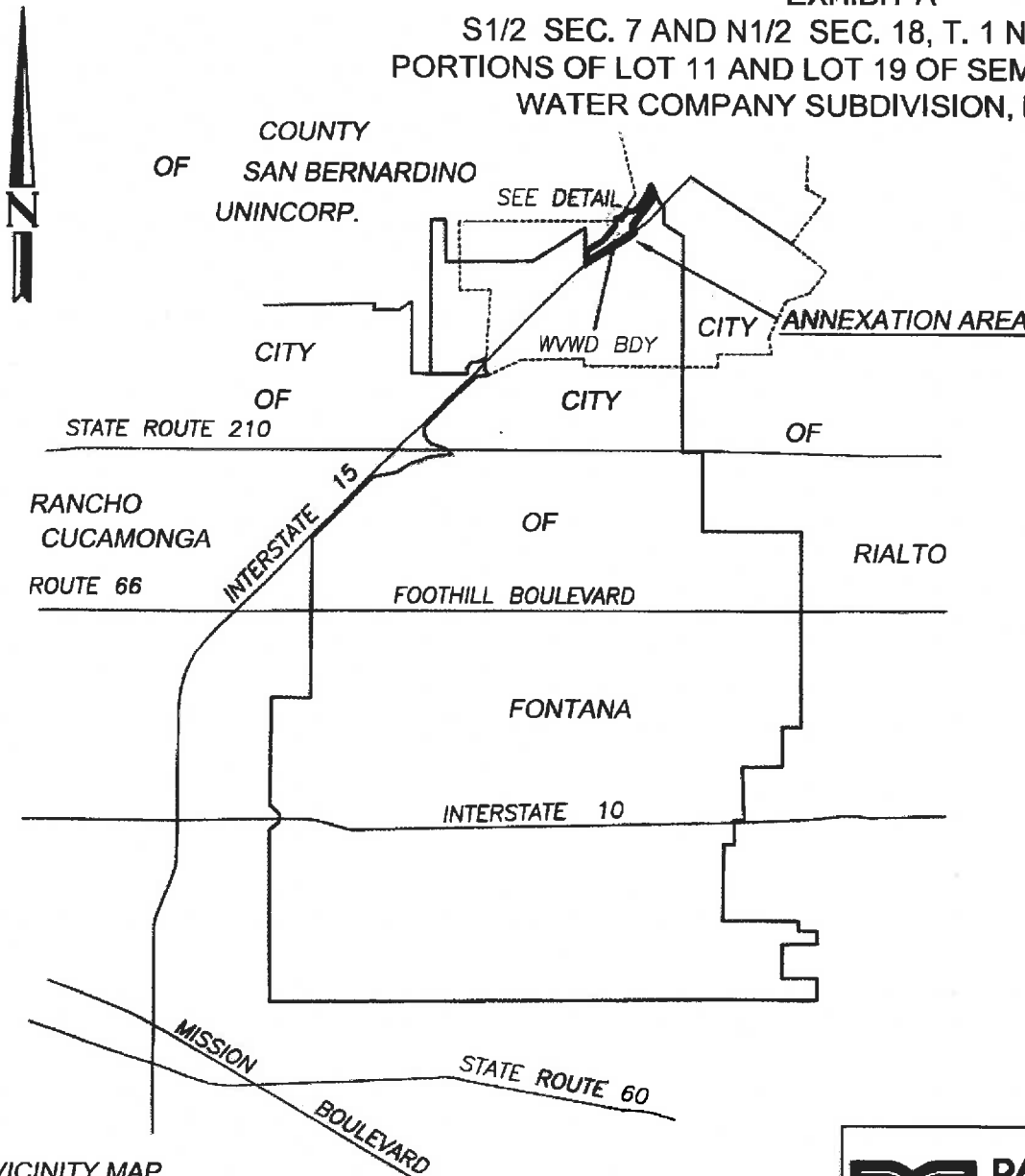





EXHIBIT A

SHEET 1 OF 6

S1/2 SEC. 7 AND N1/2 SEC. 18, T. 1 N., R. 5 W., S.B.M.
PORTIONS OF LOT 11 AND LOT 19 OF SEMI-TROPIC LAND AND
WATER COMPANY SUBDIVISION, BK. 6, PG. 12



LEGEND

-  ANNEXATION AREA
-  WVWD BDY WEST VALLEY WATER DISTRICT BOUNDARY
-  CITY OF FONTANA MUNICIPAL BOUNDARY

VICINITY MAP
NOT TO SCALE

ANNEXATION ACREAGE = 146.234 ACRES, MORE OR LESS.

DAVID EVANS AND ASSOCIATES INC.
4141 Inland Empire Blvd.
Suite 250
Ontario California 91764
Phone: 909.481.5750

LAFCO _____
SPHERE OF INFLUENCE
ANNEXATION TO THE
CITY OF FONTANA
FONTANA FIRE PROTECTION DIST.

SHEET 1 OF 6

Drawing Name: P:\C:\PRK\15L0001\0400CAD\SV\EXHIBITS\SCE Easement Vicinity exhibit.dwg Tab Name: ANNEXATION EXHIBIT VICINITY 1
Last Opened: Jan 22, 2020 - 12:24pm by: jcb

EXHIBIT A

SHEET 2 OF 6

SAN BERNARDINO COUNTY FIRE PROTECTION DISTRICT

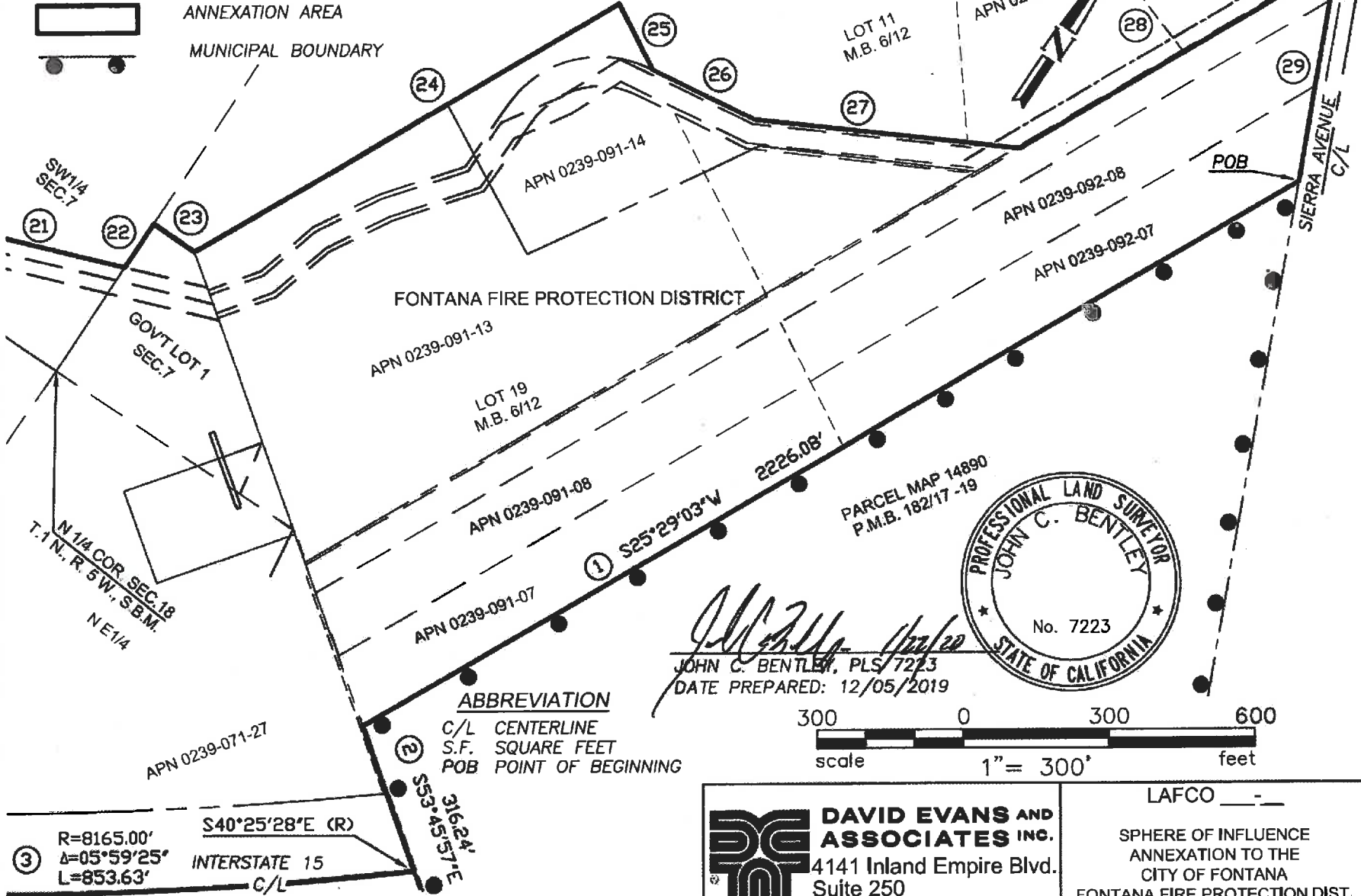
S1/2 SEC. 7 AND N1/2 SEC. 18, T. 1 N., R. 5 W., S.B.M. PORTIONS OF LOT 11 AND LOT 19 OF SEMI-TROPIC LAND AND WATER COMPANY SUBDIVISION, BK. 6, PG. 12

LEGEND



ANNEXATION AREA

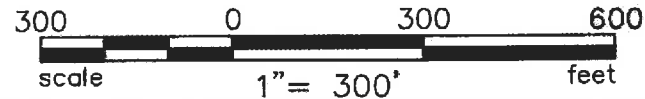
MUNICIPAL BOUNDARY



FONTANA FIRE PROTECTION DISTRICT



JOHN C. BENTLEY, PLS 7223
DATE PREPARED: 12/05/2019



ABBREVIATION
C/L CENTERLINE
S.F. SQUARE FEET
POB POINT OF BEGINNING

③ R=8165.00' S40°25'28"E (R)
Δ=05°59'25" INTERSTATE 15
L=853.63' C/L

ANNEXATION ACREAGE = 146.234 ACRES, MORE OR LESS.

DAVID EVANS AND ASSOCIATES INC.
 4141 Inland Empire Blvd.
 Suite 250
 Ontario California 91764
 Phone: 909.481.5750

LAFCO _____
 SPHERE OF INFLUENCE
 ANNEXATION TO THE
 CITY OF FONTANA
 FONTANA FIRE PROTECTION DIST.
 SHEET 2 OF 6

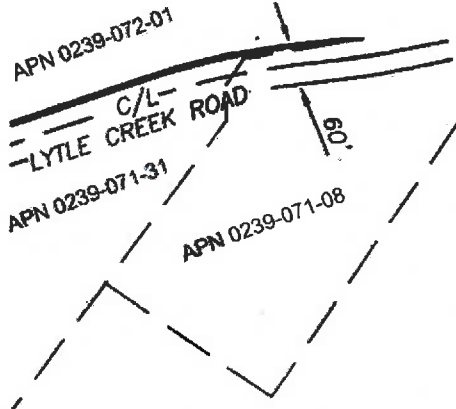
Drawing Name: P:\C\PRK115L0001\0400CAD\SV\EXHIBITS\SCE Easement Vicinity exhibit.dwg Tab Name: ANNEXATION EXHIBIT 1
Last Opened: Jan 22, 2020 - 1:17pm by: jcb

SAN BERNARDINO COUNTY FIRE PROTECTION DISTRICT

EXHIBIT A

SHEET 3 OF 6

S1/2 SEC. 7 AND N1/2 SEC. 18, T. 1 N., R. 5 W., S.B.M.
PORTIONS OF LOT 11 AND LOT 19 OF SEMI-TROPIC LAND AND
WATER COMPANY SUBDIVISION, BK. 6, PG. 12



LEGEND

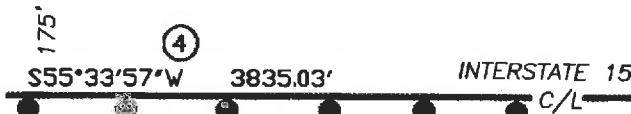


ANNEXATION AREA
MUNICIPAL BOUNDARY

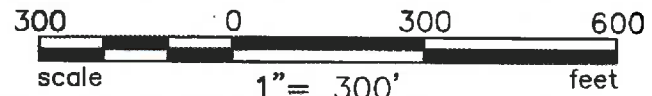
ABBREVIATION

C/L CENTERLINE
S.F. SQUARE FEET
POB POINT OF BEGINNING

FONTANA FIRE PROTECTION DISTRICT



John C. Bentley
JOHN C. BENTLEY, PLS 7223
DATE PREPARED: 12/05/2019



R=8165.00'
A=05°59'25"
L=853.63'
Ch=853.25'
S40°25'28"E (R)



DAVID EVANS AND ASSOCIATES INC.
4141 Inland Empire Blvd.
Suite 250
Ontario California 91764
Phone: 909.481.5750

LAFCO
SPHERE OF INFLUENCE
ANNEXATION TO THE
CITY OF FONTANA
FONTANA FIRE PROTECTION DIST.

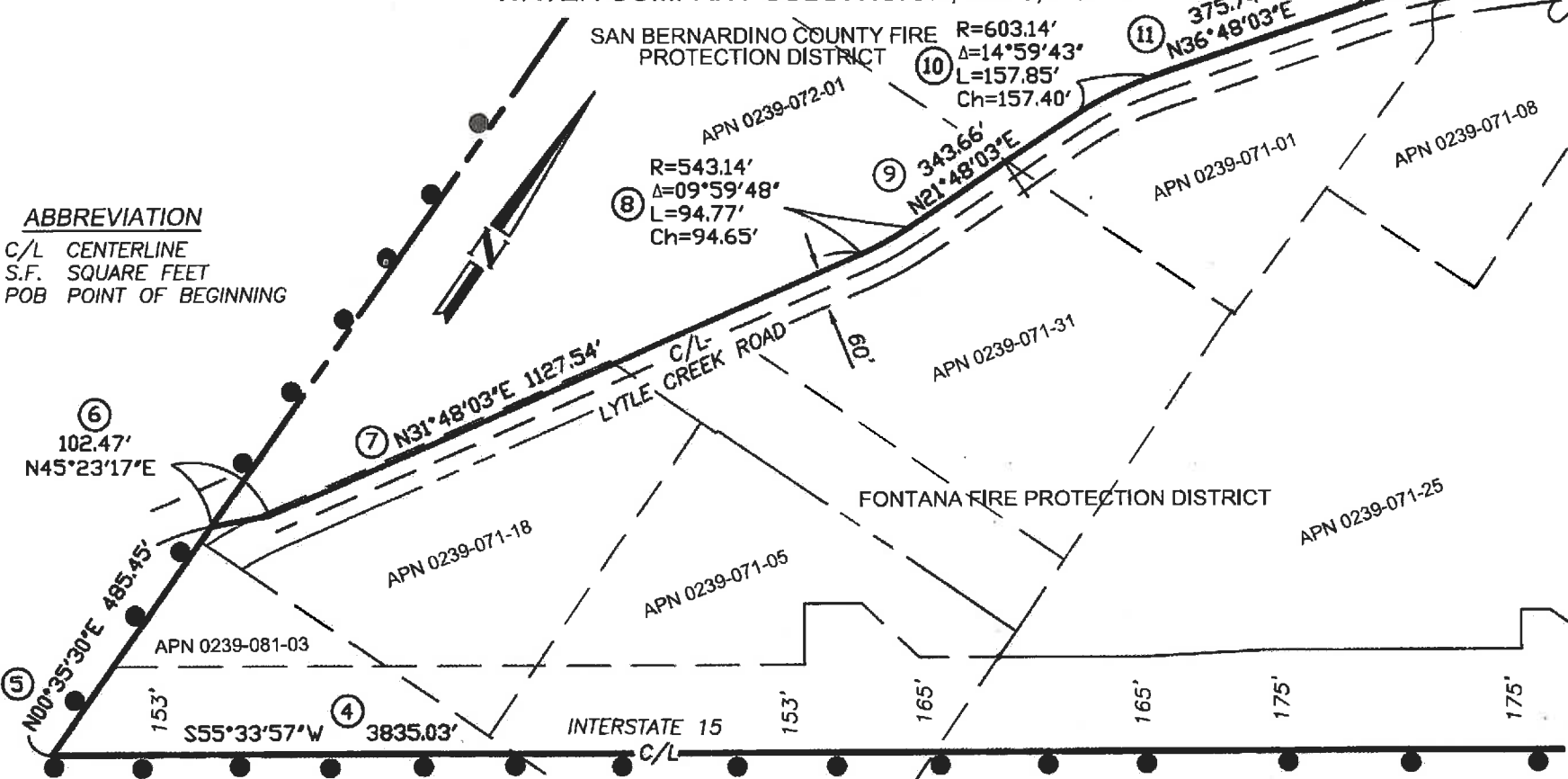
ANNEXATION ACREAGE = 146.234 ACRES, MORE OR LESS.

SHEET 3 OF 6

EXHIBIT A
S1/2 SEC. 7 AND N1/2 SEC. 18, T. 1 N., R. 5 W., S.B.M.
PORTIONS OF LOT 11 AND LOT 19 OF SEMI-TROPIC LAND AND
WATER COMPANY SUBDIVISION, BK. 6, PG. 12

SHEET 4 OF 6

ABBREVIATION
 C/L CENTERLINE
 S.F. SQUARE FEET
 POB POINT OF BEGINNING



SAN BERNARDINO COUNTY FIRE PROTECTION DISTRICT
 R=603.14'
 $\Delta=14^{\circ}59'43''$
 L=157.85'
 Ch=157.40'

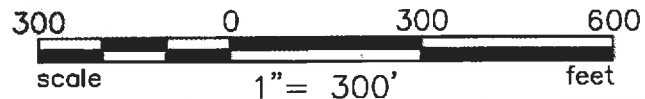
⑩
 R=543.14'
 $\Delta=09^{\circ}59'48''$
 L=94.77'
 Ch=94.65'

LEGEND

 ANNEXATION AREA
 MUNICIPAL BOUNDARY



John C. Bentley
 JOHN C. BENTLEY, PLS 7223
 DATE PREPARED: 12/05/2019



ANNEXATION ACREAGE = 146.234 ACRES, MORE OR LESS.

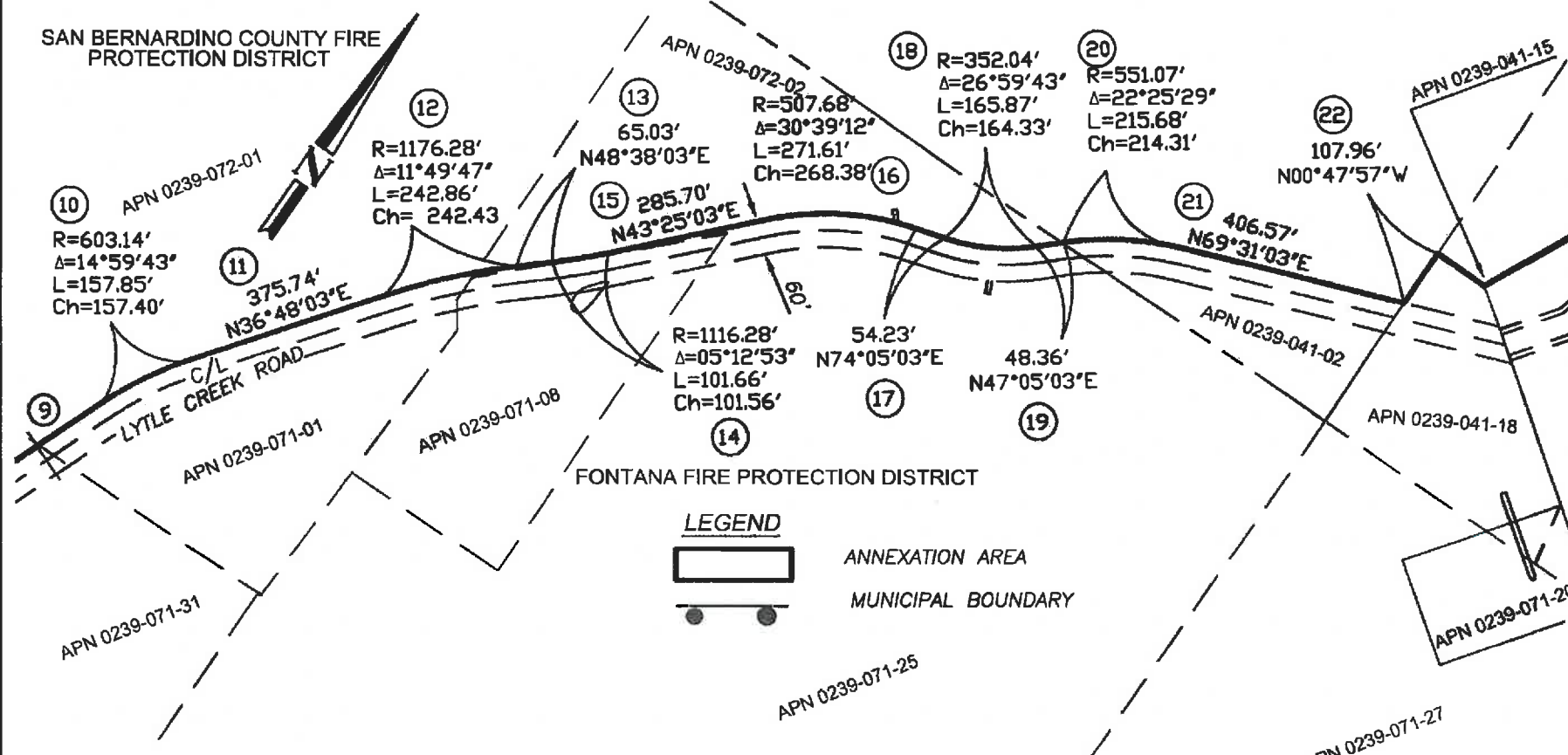
DAVID EVANS AND ASSOCIATES INC.
 4141 Inland Empire Blvd.
 Suite 250
 Ontario California 91764
 Phone: 909.481.5750

LAFCO
 SPHERE OF INFLUENCE
 ANNEXATION TO THE
 CITY OF FONTANA
 FONTANA FIRE PROTECTION DIST.
 SHEET 4 OF 6

Drawing Name: P:\C\CPK115L0001\0400CAD\SV\EXHIBITS\SCE Easement Vicinity exhibit.dwg Tab Name: ANNEXATION EXHIBIT 3
 Last Opened: Jan 22, 2020 - 12:20pm by: jcb

EXHIBIT A

S1/2 SEC. 7 AND N1/2 SEC. 18, T. 1 N., R. 5 W., S.B.M.
 PORTIONS OF LOT 11 AND LOT 19 OF SEMI-TROPIC LAND AND
 WATER COMPANY SUBDIVISION, BK. 6, PG. 12



ABBREVIATION
 C/L CENTERLINE
 S.F. SQUARE FEET
 POB POINT OF BEGINNING

John C. Bentley 1/27/20
 JOHN C. BENTLEY, PLS 7223
 DATE PREPARED: 12/05/2019



ANNEXATION ACREAGE = 146.234 ACRES, MORE OR LESS.

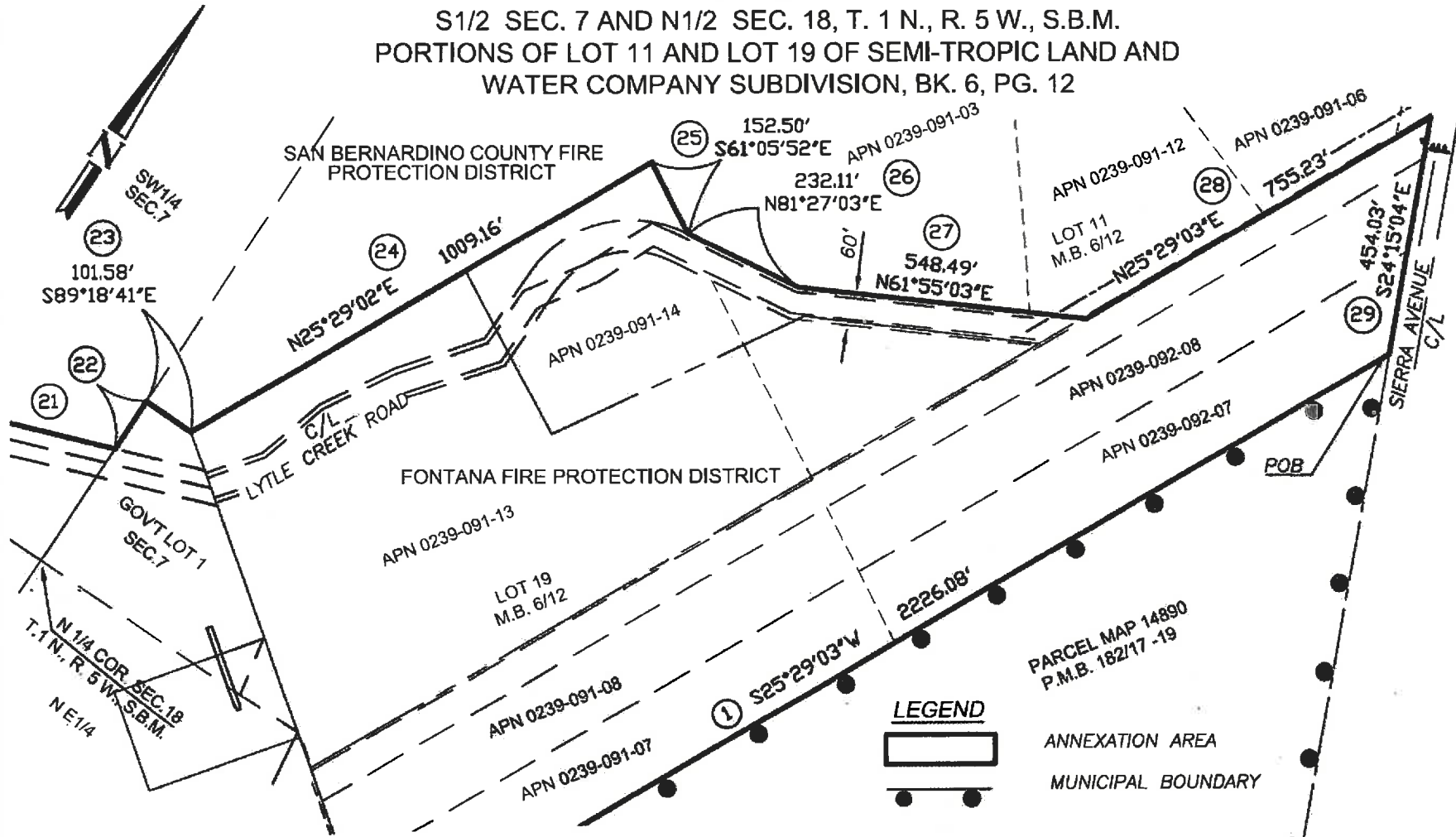
DAVID EVANS AND ASSOCIATES INC.
 4141 Inland Empire Blvd.
 Suite 250
 Ontario California 91764
 Phone: 909.481.5750

LAFCO _____
 SPHERE OF INFLUENCE
 ANNEXATION TO THE
 CITY OF FONTANA
 FONTANA FIRE PROTECTION DIST.
 SHEET 5 OF 6

EXHIBIT A

SHEET 6 OF 6

S 1/2 SEC. 7 AND N 1/2 SEC. 18, T. 1 N., R. 5 W., S.B.M.
 PORTIONS OF LOT 11 AND LOT 19 OF SEMI-TROPIC LAND AND
 WATER COMPANY SUBDIVISION, BK. 6, PG. 12



ABBREVIATION

- C/L CENTERLINE
- S.F. SQUARE FEET
- POB POINT OF BEGINNING

John C. Bentley
 JOHN C. BENTLEY, #LS 7223
 DATE PREPARED: 12/05/2019

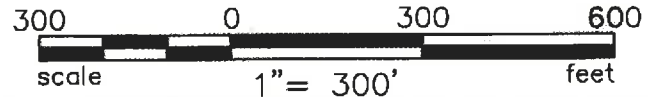


ANNEXATION ACREAGE = 146.234 ACRES, MORE OR LESS.

LEGEND



ANNEXATION AREA
 MUNICIPAL BOUNDARY



DAVID EVANS AND ASSOCIATES INC.
 4141 Inland Empire Blvd.
 Suite 250
 Ontario California 91764
 Phone: 909.481.5750

LAFCO _____
 SPHERE OF INFLUENCE
 ANNEXATION TO THE
 CITY OF FONTANA
 FONTANA FIRE PROTECTION DIST.

SHEET 6 OF 6

Drawing Name: P:\C:\CPRK115L0001\0400CAD\SV\EXHIBITS\SCE Easement Vicinity exhibit.dwg Tab Name: ANNEXATION EXHIBIT 5
 Last Opened: Jan 22, 2020 - 1:59pm by: jcbe