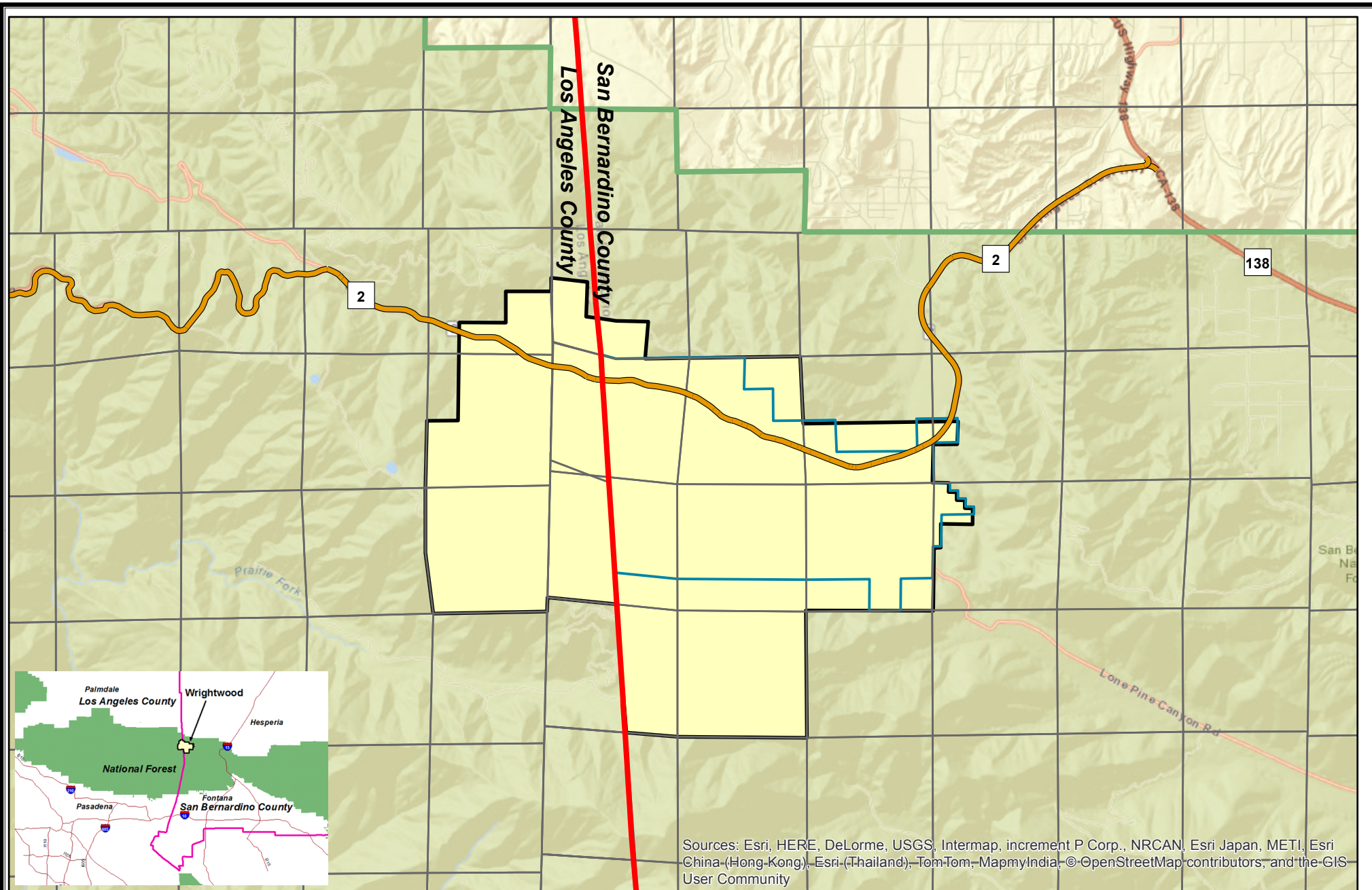


**LAFCO 3202**

**Notice of Filing Attachments:**

**Overall Vicinity Map**



## LAFCO 3202 – Reorganization to include Formation of the Wrightwood Community Services District and Dissolution of County Service Area 56



LAFCO  
for San Bernardino County



0 0.5 1 2 Miles

- Wrightwood CSD - proposed
- County Service Area 56
- National Forest Boundary
- Countyline