

Glossary of Terms

Transmission Line

A line or wire that carries electricity over large distances to a substation where it is reduced to a level suitable for supplying customers.

Distribution Line

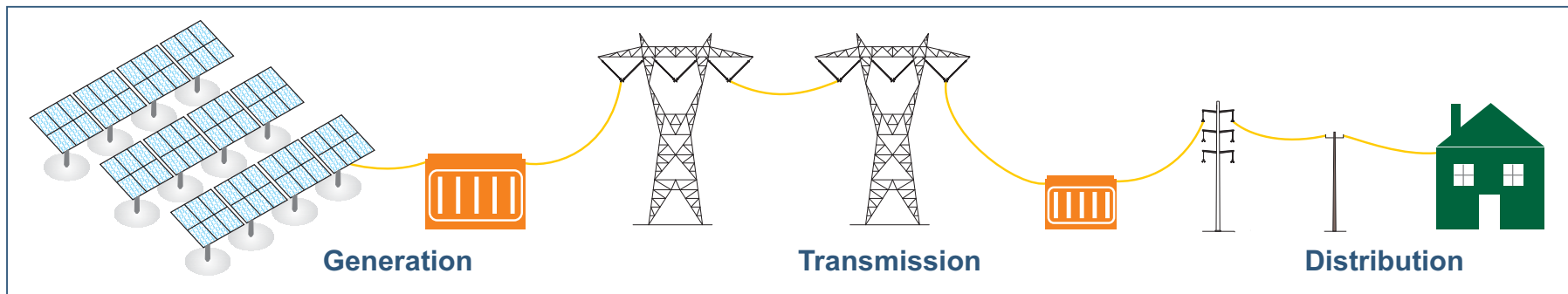
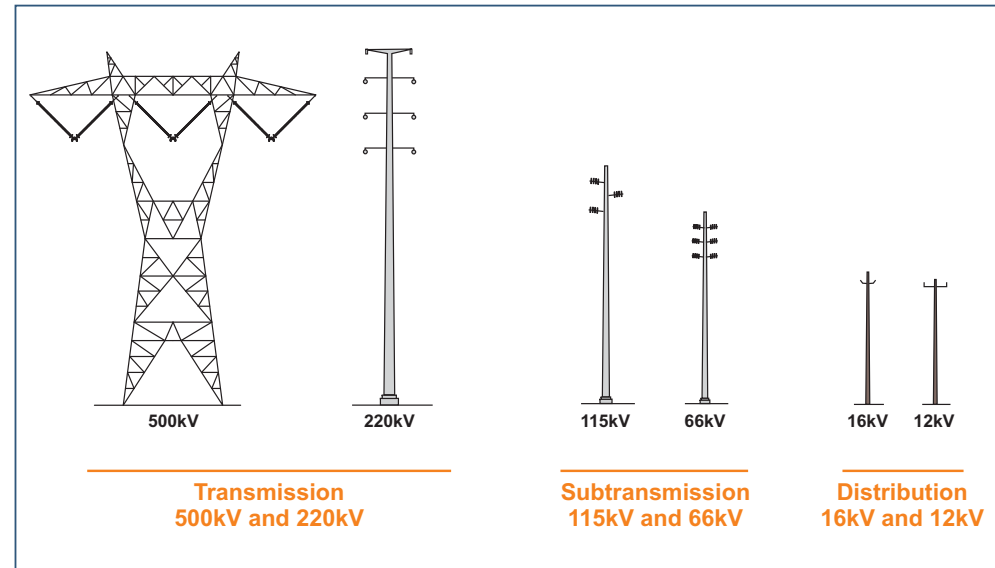
A line that delivers electricity to the retail customer's home or business. This is a low-voltage electrical line in the final stage of delivery for electricity.

Utility-Scale Energy Production

Production designed to feed a large or regional-scale energy grid. The California Energy Commission defines this as a size of 10 MW or more.

Community-Oriented Energy Production

Community-oriented renewable energy refers to systems of production and distribution that primarily serve and benefit local energy users. Roof-top/on-site/accessory and local community solar are types of community-oriented production.



Typical Energy Transmission and Distribution System