

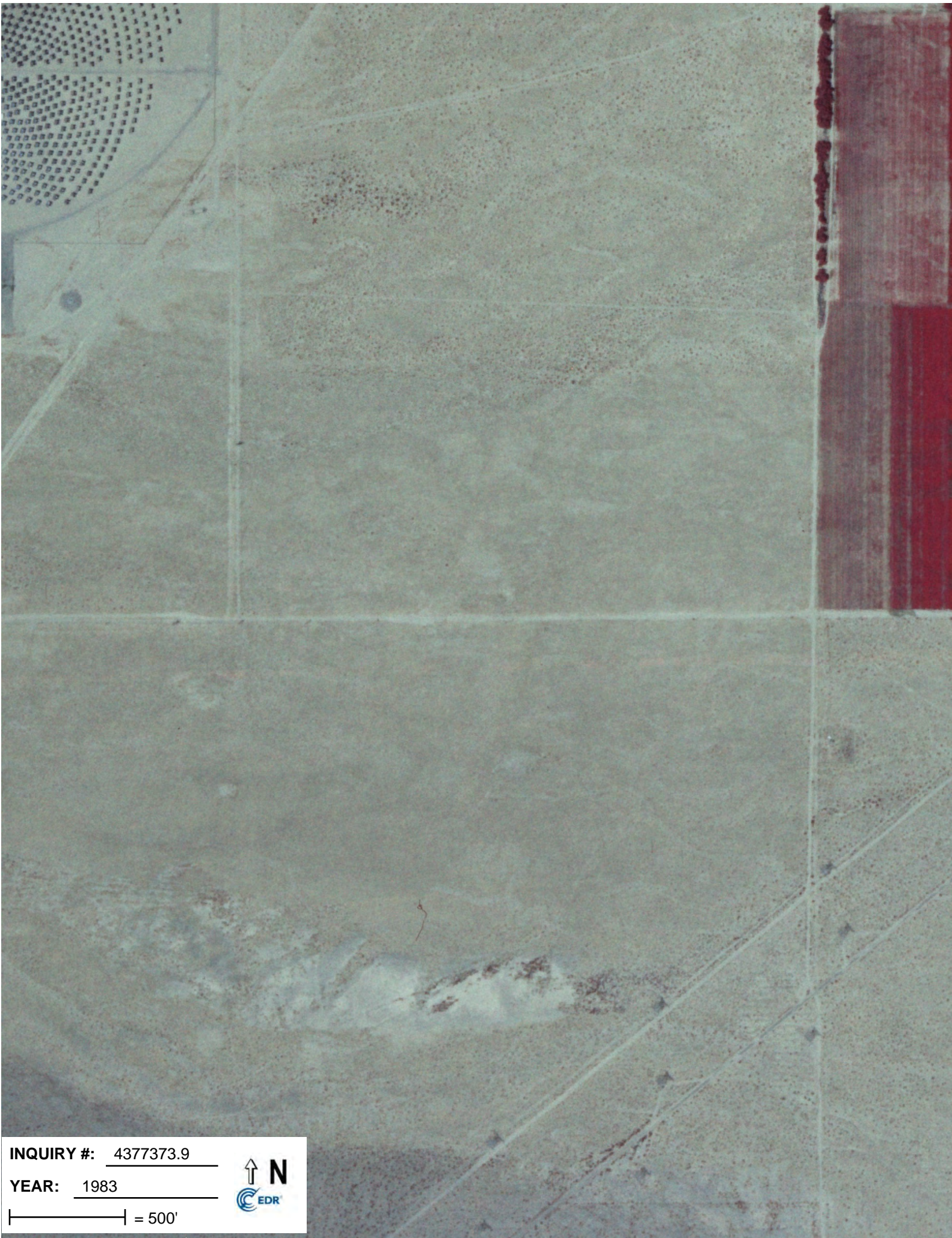


INQUIRY #: 4377373.9

YEAR: 1953

| = 1000'



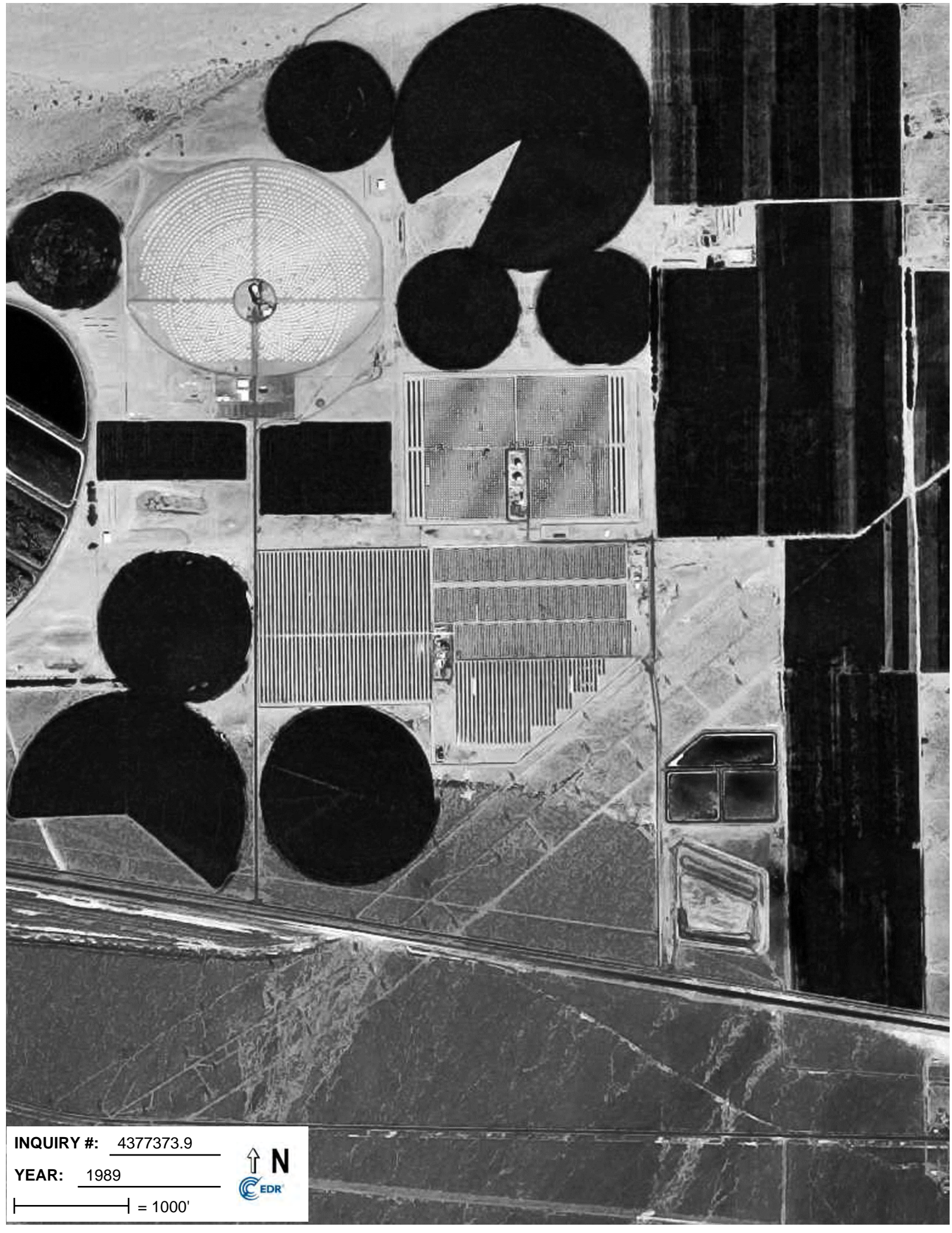


INQUIRY #: 4377373.9

YEAR: 1983

| = 500'



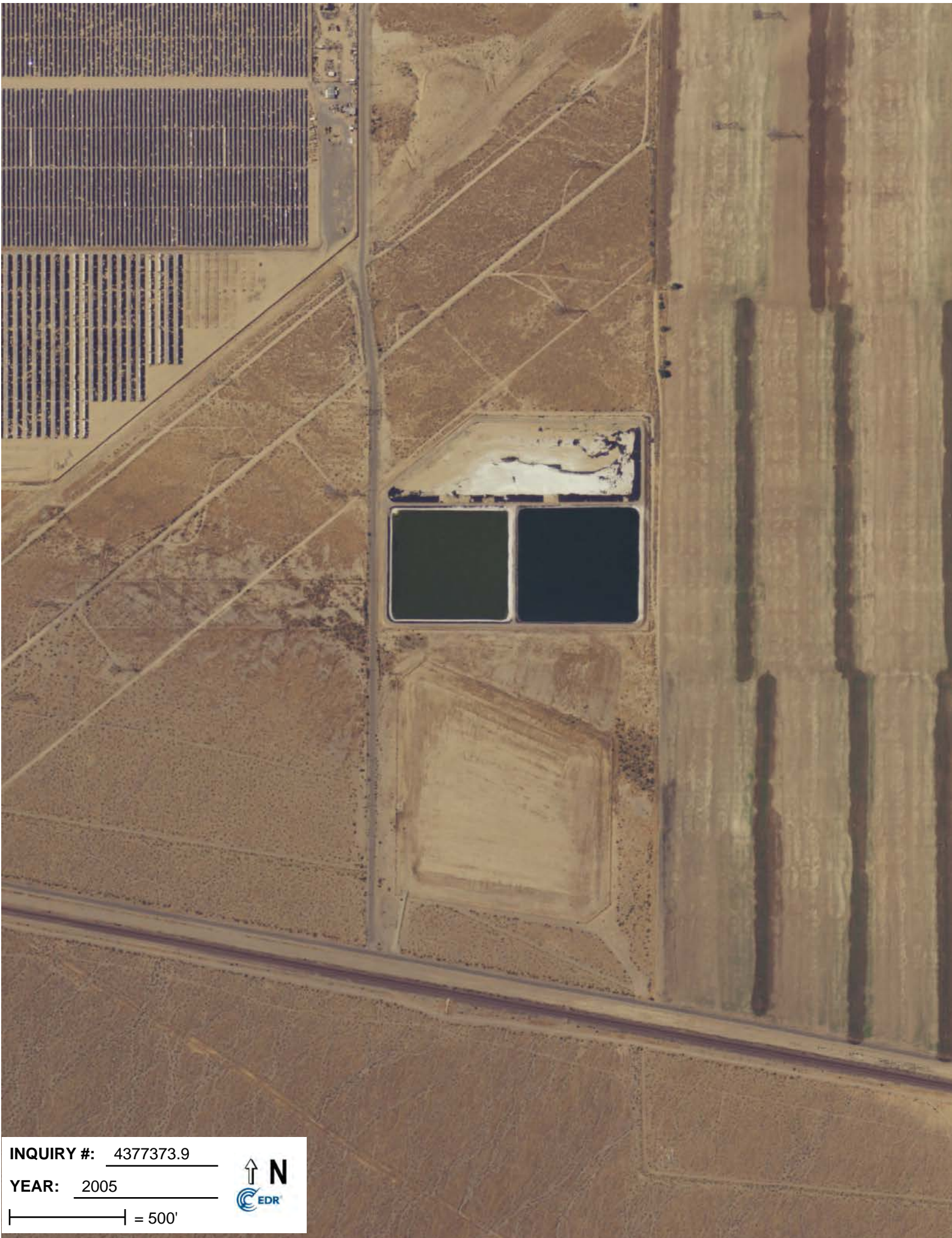


INQUIRY #: 4377373.9

YEAR: 1989

| = 1000'





INQUIRY #: 4377373.9

YEAR: 2005

| = 500'





INQUIRY #: 4377373.9

YEAR: 2005

| = 500'



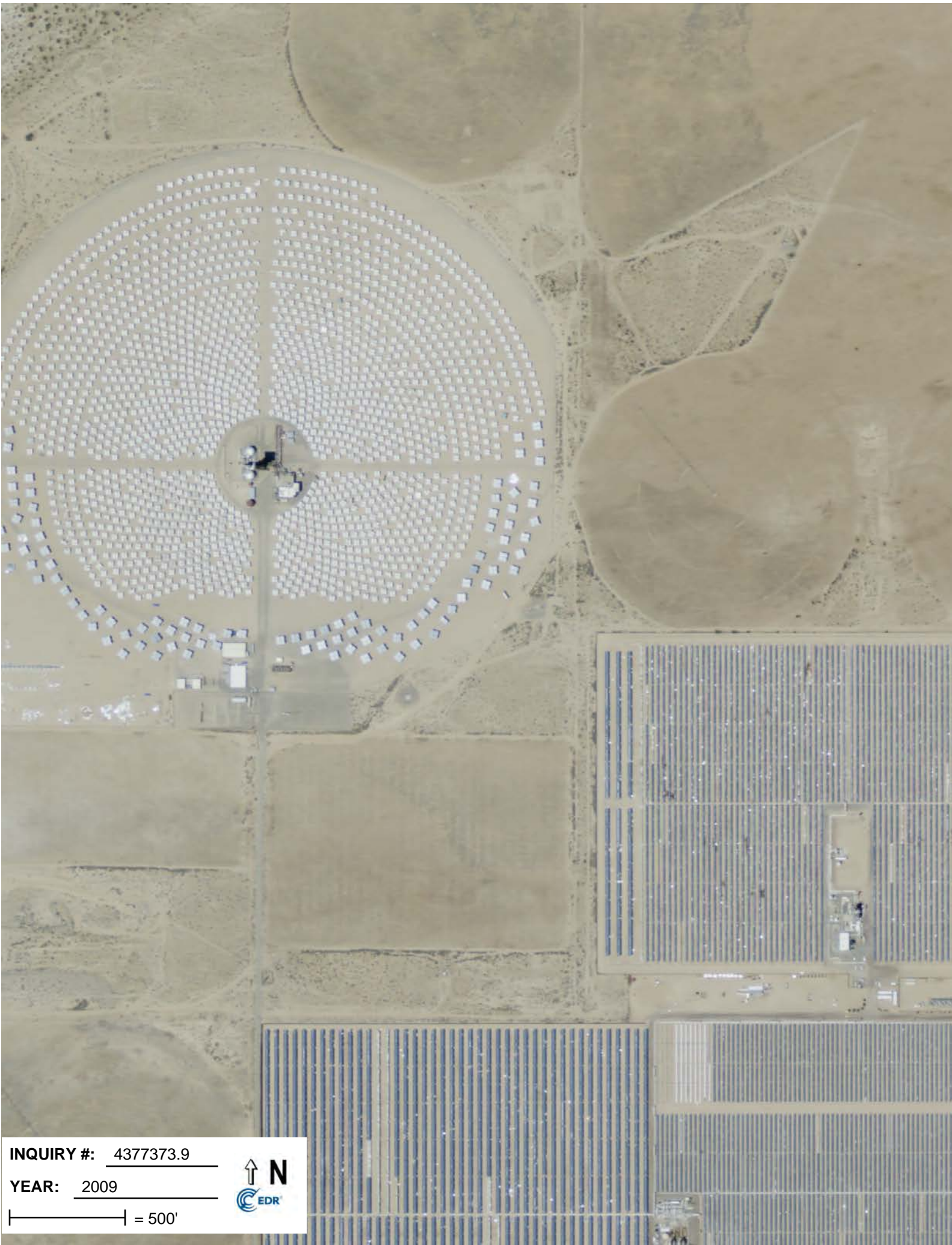


INQUIRY #: 4377373.9

YEAR: 2009

| = 500'





INQUIRY #: 4377373.9

YEAR: 2009

| = 500'





INQUIRY #: 4377373.9

YEAR: 2009

| = 500'





INQUIRY #: 4377373.9

YEAR: 2009

| = 500'





INQUIRY #: 4377373.9

YEAR: 2010

| = 500'





INQUIRY #: 4377373.9

YEAR: 2010

| = 500'





INQUIRY #: 4377373.9

YEAR: 2010

| = 500'



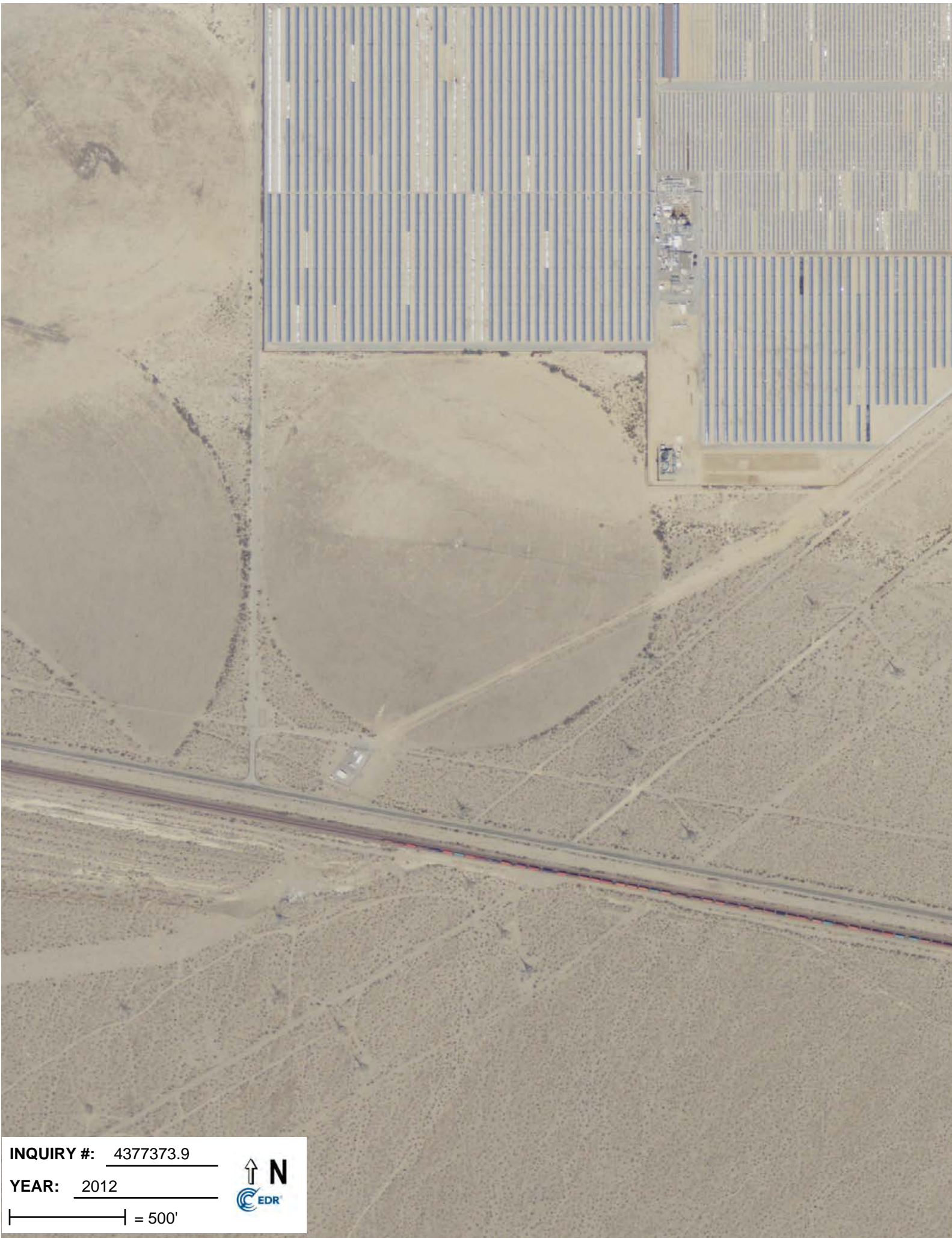


INQUIRY #: 4377373.9

YEAR: 2010

| = 500'





INQUIRY #: 4377373.9

YEAR: 2012

| = 500'





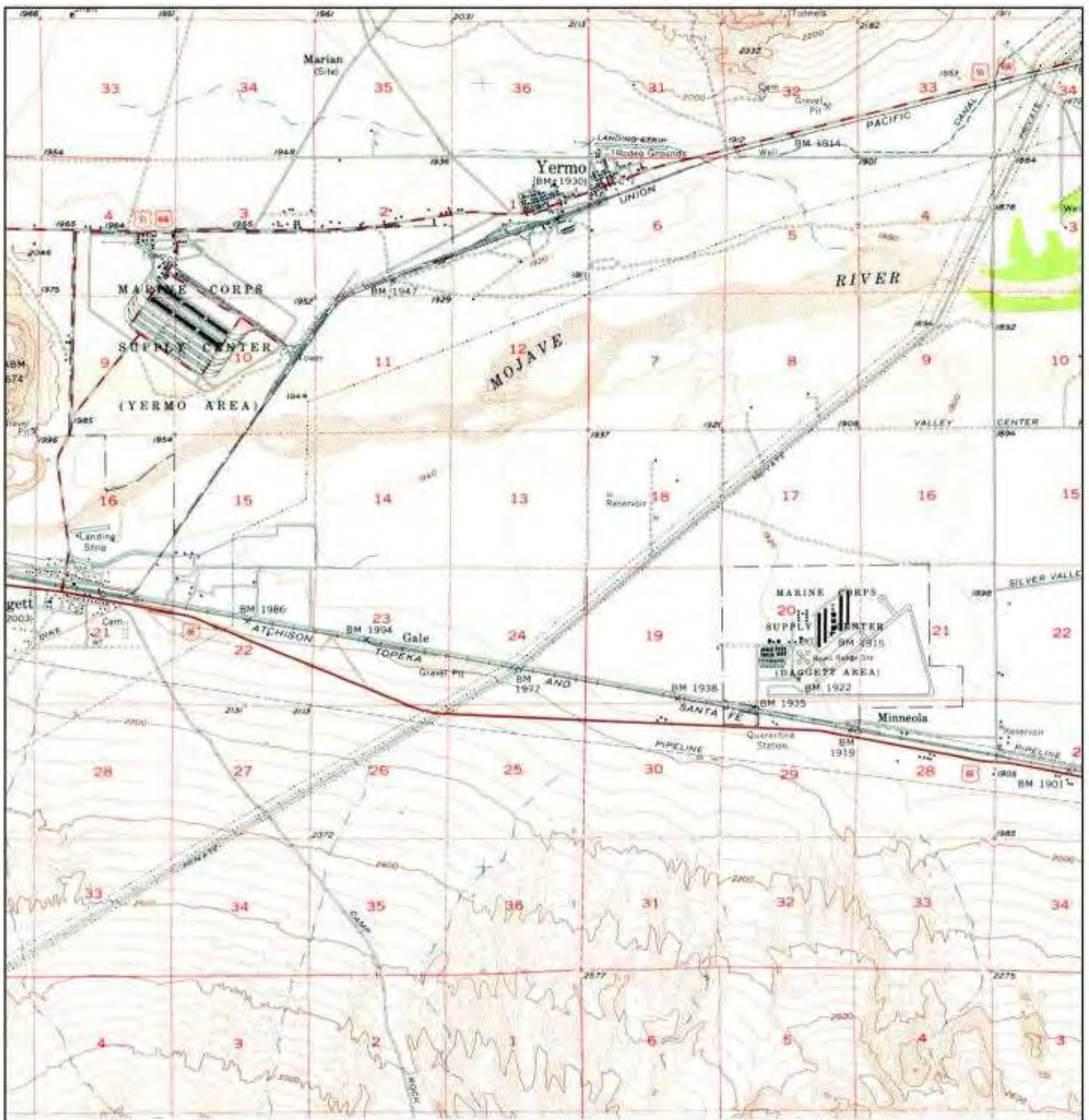
INQUIRY #: 4377373.9

YEAR: 2012

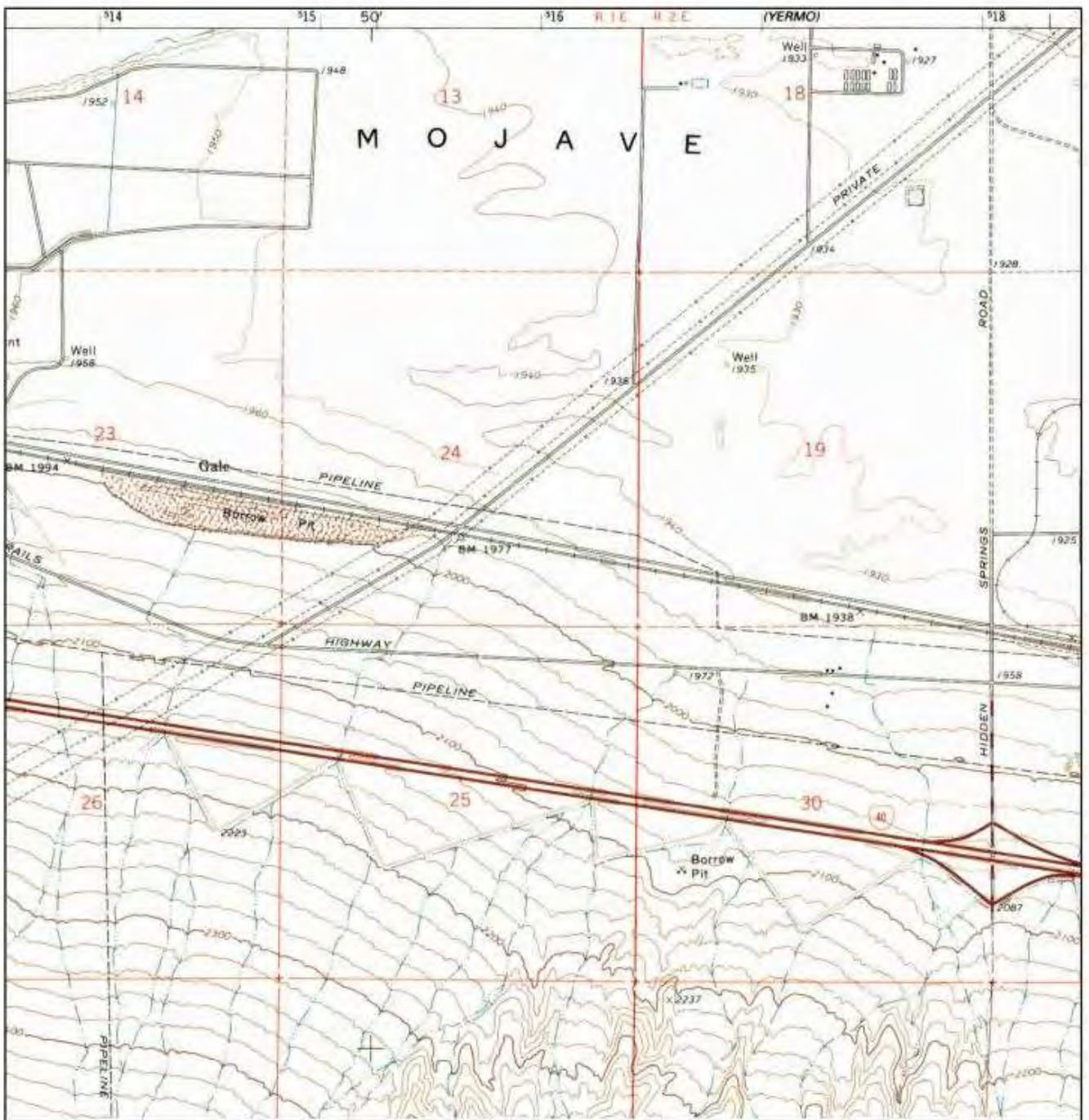
| = 500'



HISTORICAL TOPOGRAPHIC MAPS



USGS Quad: Daggett
Year: 1956



USGS Quad: Minneola
Year: 1971



USGS Quad: Daggett
Year: 1983

APPENDIX D
Subject Property Photographs

Sunray Solar Site

Photo ID: 1



Attributes	
Comments	Main office at SEGs 1 powerblock
Photo ID	1



Attributes	
Comments	Location of boring S-4
Photo ID	2



Attributes	
Comments	SEGS 1powerblock
Photo ID	3



Attributes	
Comments	Caloria tanks in SEGs 1. Also, location of fire pit.
Photo ID	4



Attributes	
Comments	Firefighting foam AST
Photo ID	5



Attributes	
Comments	Caloria ASTs in fire pit area at SEGs
Photo ID	6

Photo ID: 7



Attributes	
Comments	Boring location S-1 HTF line at SEGs 1 powerblock
Photo ID	7



Attributes	
Comments	ASTs containing caustics for water treatment were removed in 2010 at SEGs 1 powerblock area.
Photo ID	8



Attributes	
Comments	Hazardous waste storage containers.
Photo ID	9



Attributes	
Comments	Drip pans, oil residues drums, in hazardous waste storage container
Photo ID	10

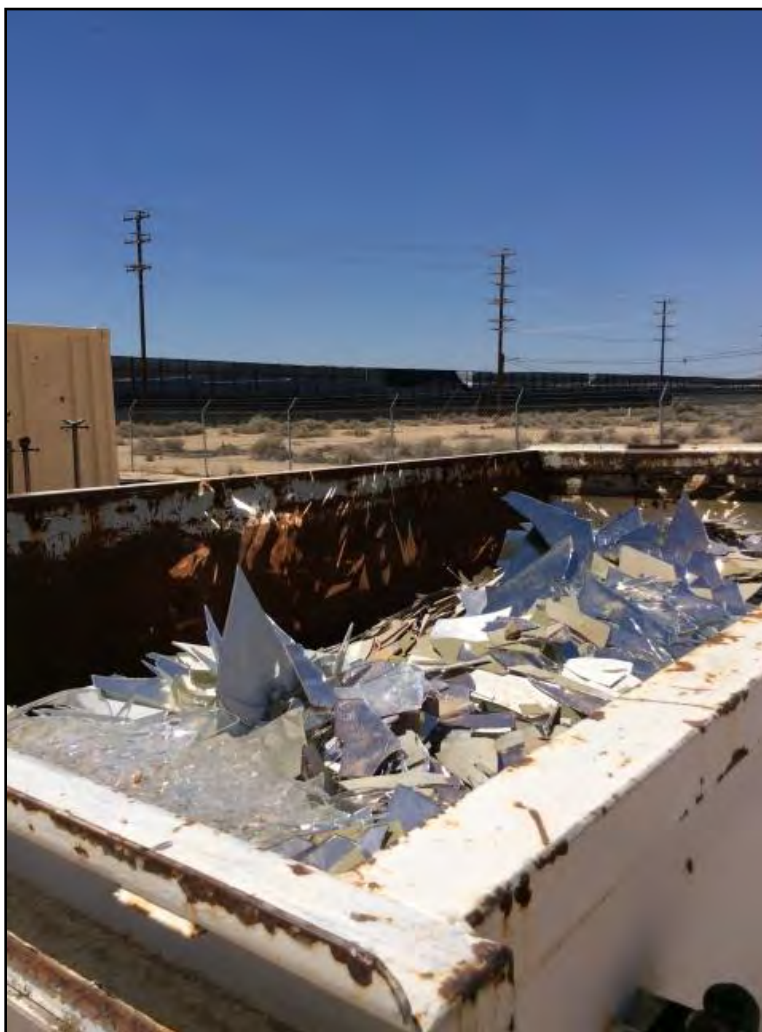


Attributes	
Comments	Drums in hazarous waste storage area
Photo ID	11



Attributes	
Comments	Hazardous waste area. Note battery storage in yellow container. No leaks or spills observed on drip/spill pads. Cracks have been recently sealed.
Photo ID	12

Photo ID: 13



Attributes	
Comments	Storage of mirror glass. The mirror glass has a coating that contains lead. The glass is considered hazadous waste because of TCLP testing above the 5 mg/L limit.
Photo ID	13



Attributes	
Comments	The olive green and faded olive green mirror glass contains the lead that tests above the limits. The white coating does not contain lead.
Photo ID	14

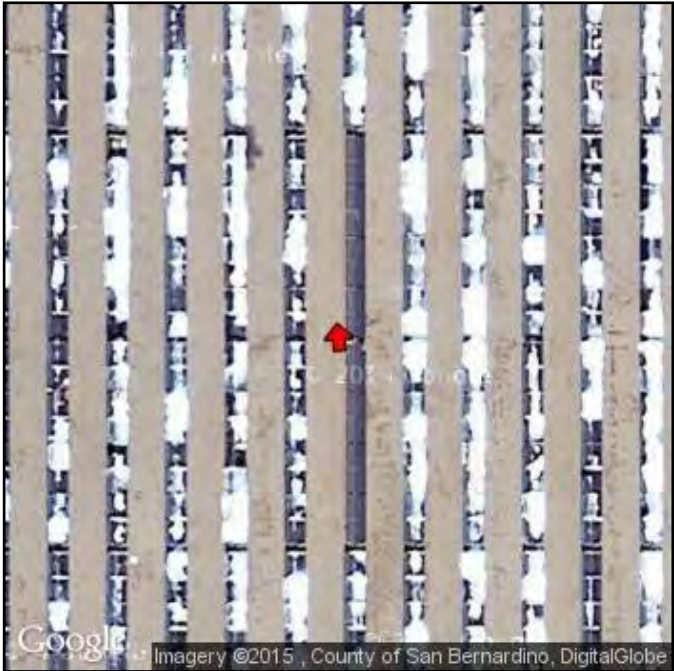


Attributes	
Comments	Header lines at SEGs 1 array field that contains or contained caloria. The SEGs 1 field is no longer in operation. They are currently purging the oil out of the lines with a evacuation pump and storing the oil for recycling in the ASTs located in the fire pit area.
Photo ID	15

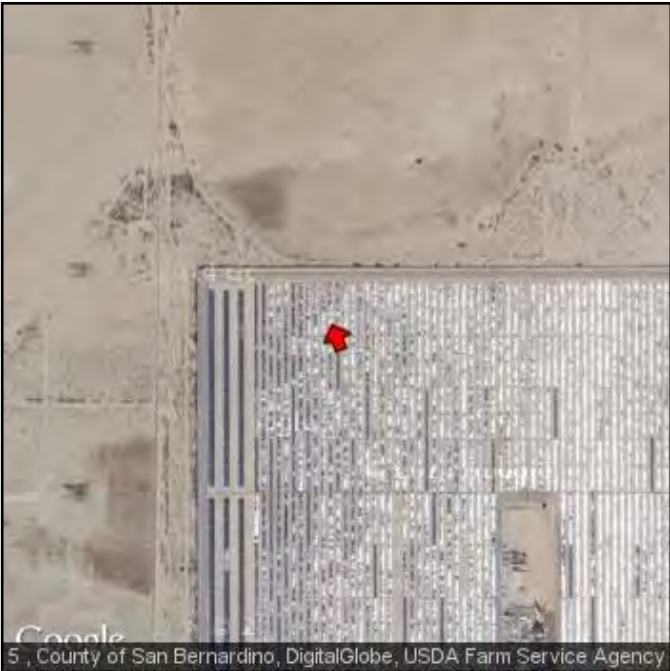


Attributes	
Comments	Note different mirror panels in SEGs 1 array field. White panels do not have lead-based coatings.
Photo ID	16

Photo ID: 17



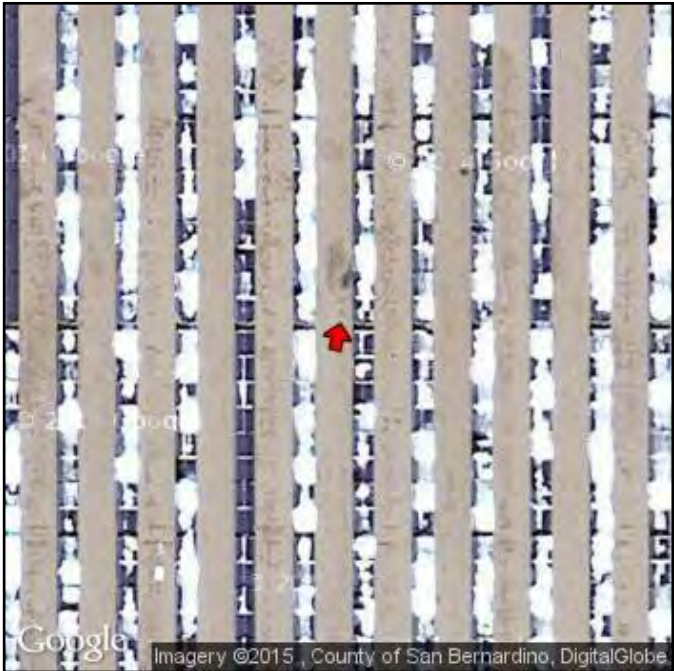
Attributes	
Comments	Active remediation near boring location P-1
Photo ID	17



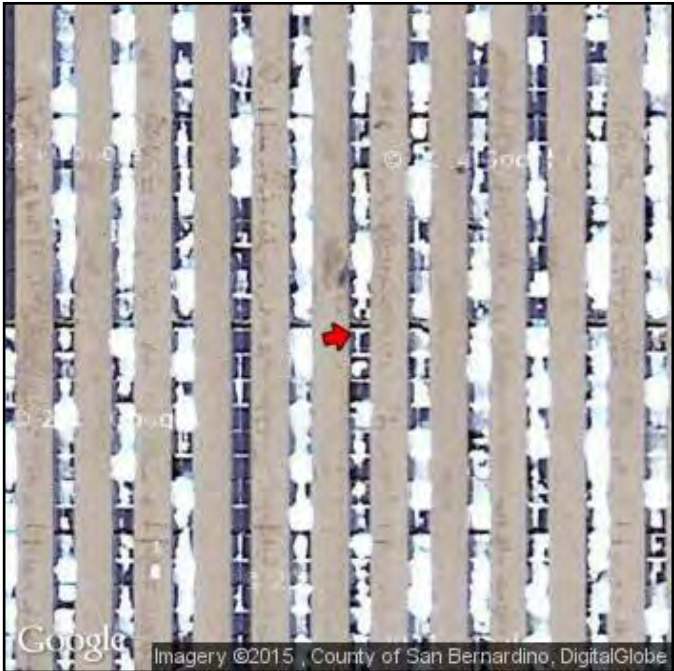
Attributes	
Comments	Active remediation near row 16A at double flex hose near boring P-1
Photo ID	18



Attributes	
Comments	Double flex hose is were leaks commonly occur
Photo ID	19



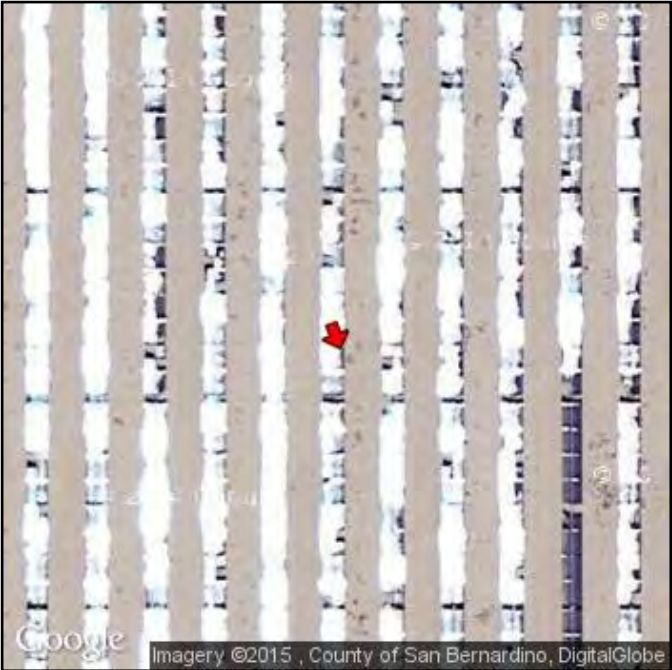
Attributes	
Comments	Spill cleanup at 22C in progress
Photo ID	20



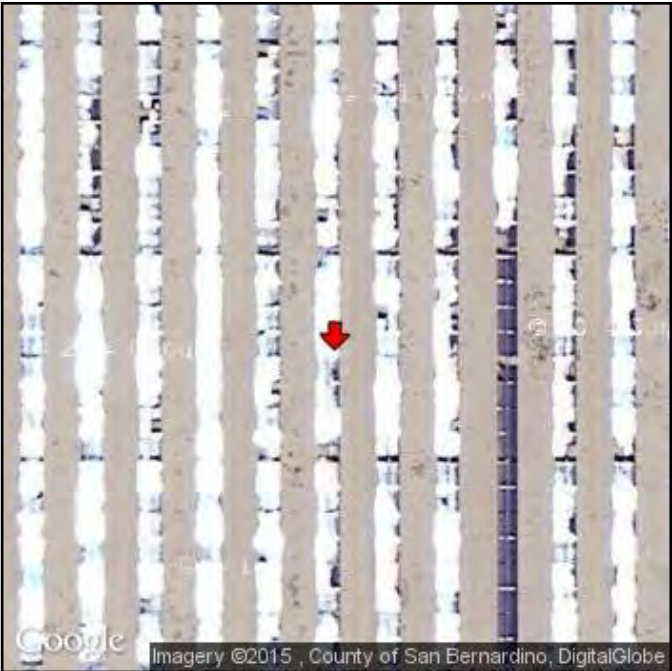
Attributes	
Comments	Spill cleanup at 23B/C completed.
Photo ID	21



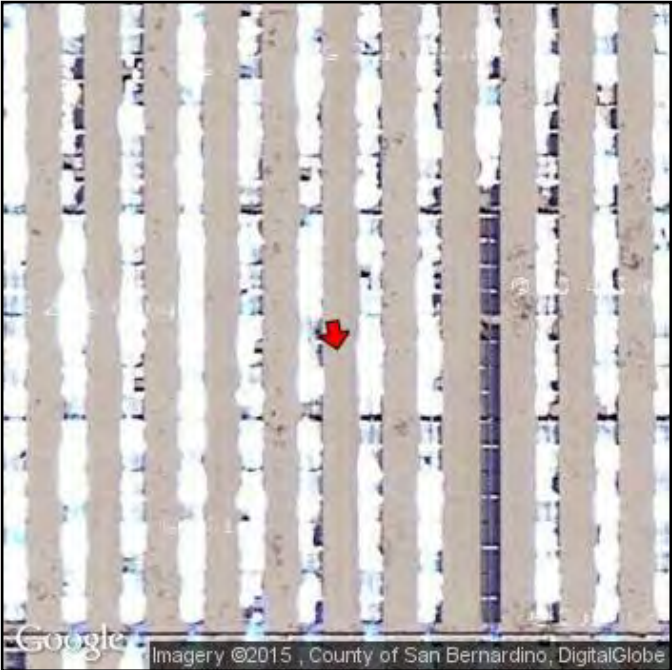
Attributes	
Comments	Boring P-18 location and view of north side of Powerblock 1 in SEGS 1 array field
Photo ID	22



Attributes	
Comments	Excavation remediation at leak from double flex hose - rows 55 and 56C/D
Photo ID	23



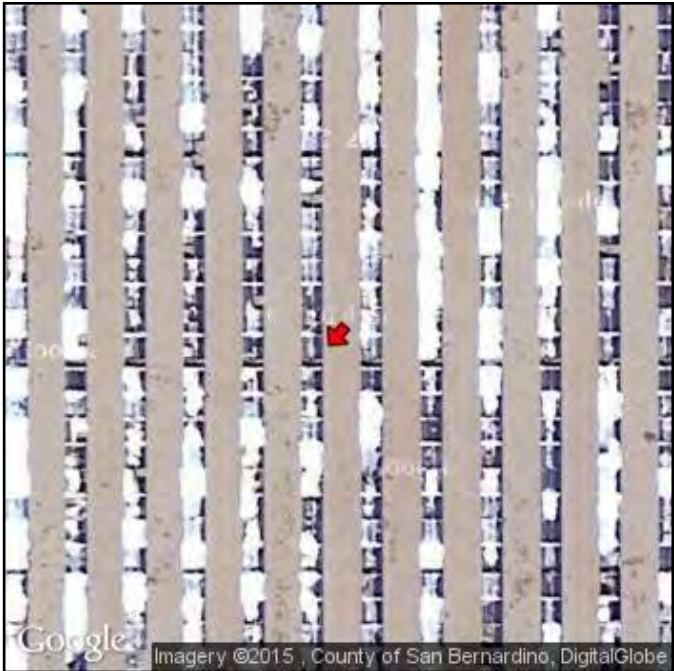
Attributes	
Comments	Concrete piling for array structure. Note contaminated soil around concrete.
Photo ID	24



Attributes	
Comments	Caloria contaminated soils on concrete piling.
Photo ID	25



Attributes	
Comments	Note deminimus spills in row 70/71 array C.
Photo ID	26



Attributes	
Comments	Note at row 70/71 c remediated 1cy excavation
Photo ID	27



Attributes	
Comments	Row 71/70 C
Photo ID	28



Attributes	
Comments	71/72D in progress. Note darker layer of sand is where caloria is present
Photo ID	29



Attributes	
Comments	Deminimus spill at row 75 D south from single flex. A hand excavation completed.
Photo ID	30



Attributes	
Comments	Boring P-5 at east side of stockpile for LTU 1
Photo ID	31



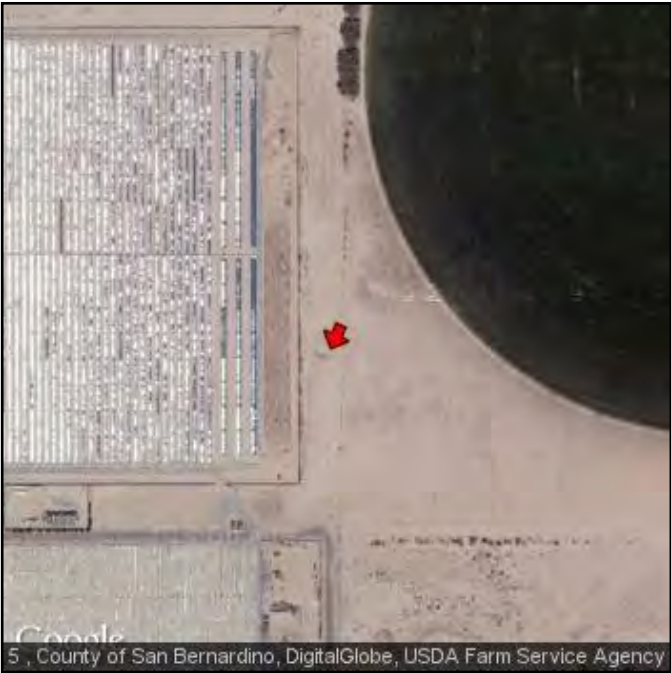
Attributes	
Comments	Screen machine to screen glass out
Photo ID	32



Attributes	
Comments	South end of LTU 1.
Photo ID	33



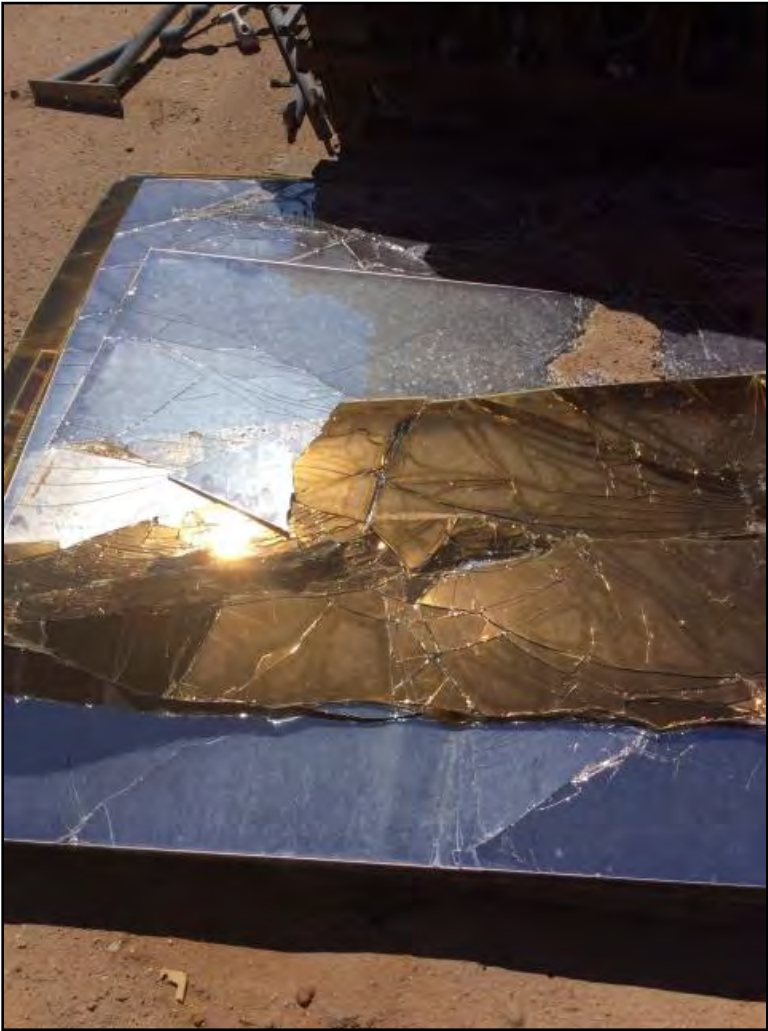
Attributes	
Comments	Remediated soil pile from SEGS 1 array field.
Photo ID	34



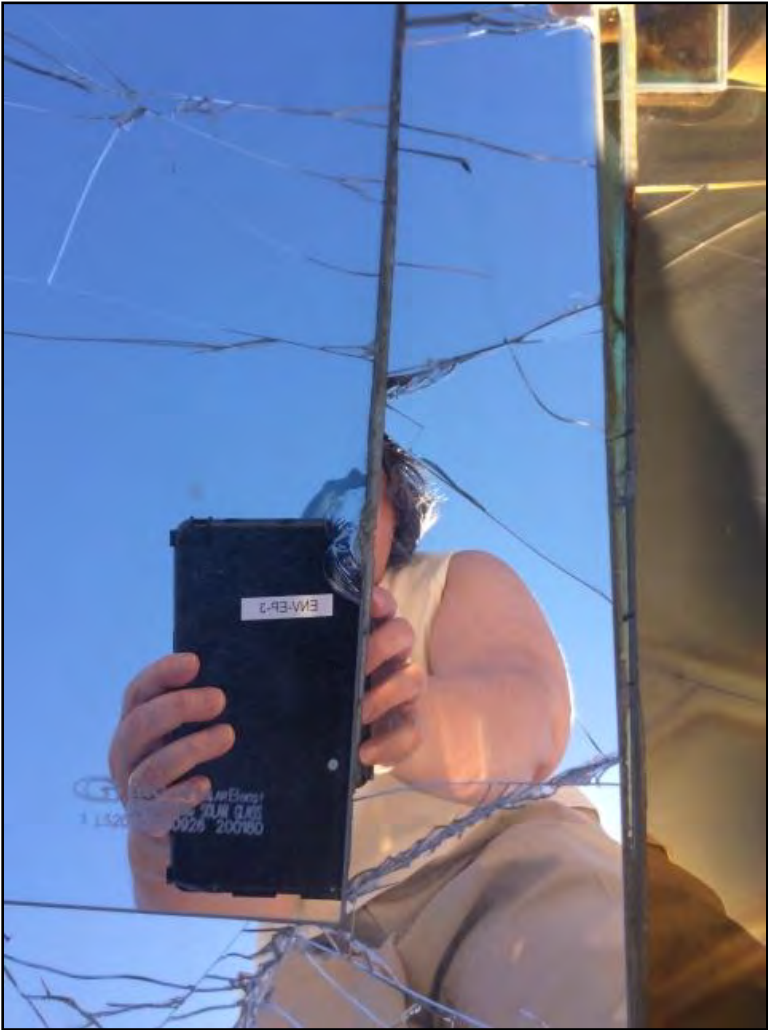
Attributes	
Comments	Thermally treated soil that once contained oil from the equipment yard area
Photo ID	35



Attributes	
Comments	Treated soil from LTU 1
Photo ID	36



Attributes	
Comments	Guardian mirror glass does not have lead coating on the back of the mirror like the others.
Photo ID	37



Attributes	
Comments	Guardian mirror glass.
Photo ID	38



Attributes	
Comments	Oil lube and motor oil drums
Photo ID	39



Attributes	
Comments	Charcoal for air treatment in drums and phosphorous for water treatment in blue cube tote.
Photo ID	40



Attributes	
Comments	Maintenance garage for vehicles
Photo ID	41



Attributes	
Comments	Parts cleaner recycled in maintainence garage
Photo ID	42



Attributes	
Comments	Diesel and gasoline ASTs for on-site vehicles. Boring M-5 is located off the pad.
Photo ID	43



Attributes	
Comments	One cubic yard sump drains on fuel tanks pad
Photo ID	44



Attributes	
Comments	Water and inoculation tanks for LTUs
Photo ID	45



Attributes	
Comments	Remediated area where numerous deminimus leaks from vehicles in the maintenance and storage yard.
Photo ID	46



Attributes	
Comments	Soil boring M-6 located in the remediated oil area.
Photo ID	47



Attributes	
Comments	42m5 by gas tanks
Photo ID	48