


LOCAL AGENCY FORMATION COMMISSION FOR SAN BERNARDINO COUNTY

1170 West Third Street, Unit 150, San Bernardino, CA 92415-0490
(909) 388-0480 • Fax (909) 388-0481
lafco@lafco.sbcounty.gov
www.sbclafco.org

DATE: APRIL 4, 2018

FROM:  KATHLEEN ROLLINGS-McDONALD, Executive Officer
SAMUEL MARTINEZ, Assistant Executive Officer

TO: LOCAL AGENCY FORMATION COMMISSION

SUBJECT: Agenda Item 9 – Discussion of Deferral of Mandatory Service Review for Wrightwood Community Services District for one year and Initiation of Coterminous Sphere of Influence Establishment for Wrightwood Community Services District within San Bernardino County

RECOMMENDATION:

The staff recommends that the Commission take the following actions:

1. Defer the required service review for the Wrightwood Community Services District pursuant to Government Code Section 56430(e) for a period of one (1) year and direct staff to return to the Commission for its consideration of the service review for the Wrightwood Community Services District in June 2019; and,
2. Initiate the establishment of a sphere of influence for the Wrightwood Community Services District within San Bernardino County to be conterminous with its boundary within San Bernardino County.

BACKGROUND:

The Wrightwood Community Services District (hereafter the “Wrightwood CSD” or the “District”) was officially formed on July 1, 2017. In the past, the Commission has taken the route of establishing a coterminous sphere of influence for a newly formed agency within one year of its formation pursuant to the statutory direction identified in Government Code Section 56426.5(b). However, Government Code Section 56430(e) requires that the Commission, in conjunction with establishing a sphere of influence, also conduct a service review.

Since its formation, the Wrightwood CSD has been dealing with questions related to its finances. In order to have a better understanding of Wrightwood CSD's finances, it would be best to defer the service review in order to have—at the very least—the Wrightwood CSD's first year's audit. Therefore, staff is recommending that the Commission defer the required service review for the Wrightwood CSD for a period of one year and direct staff to return to the Commission in June 2019 for said service review.

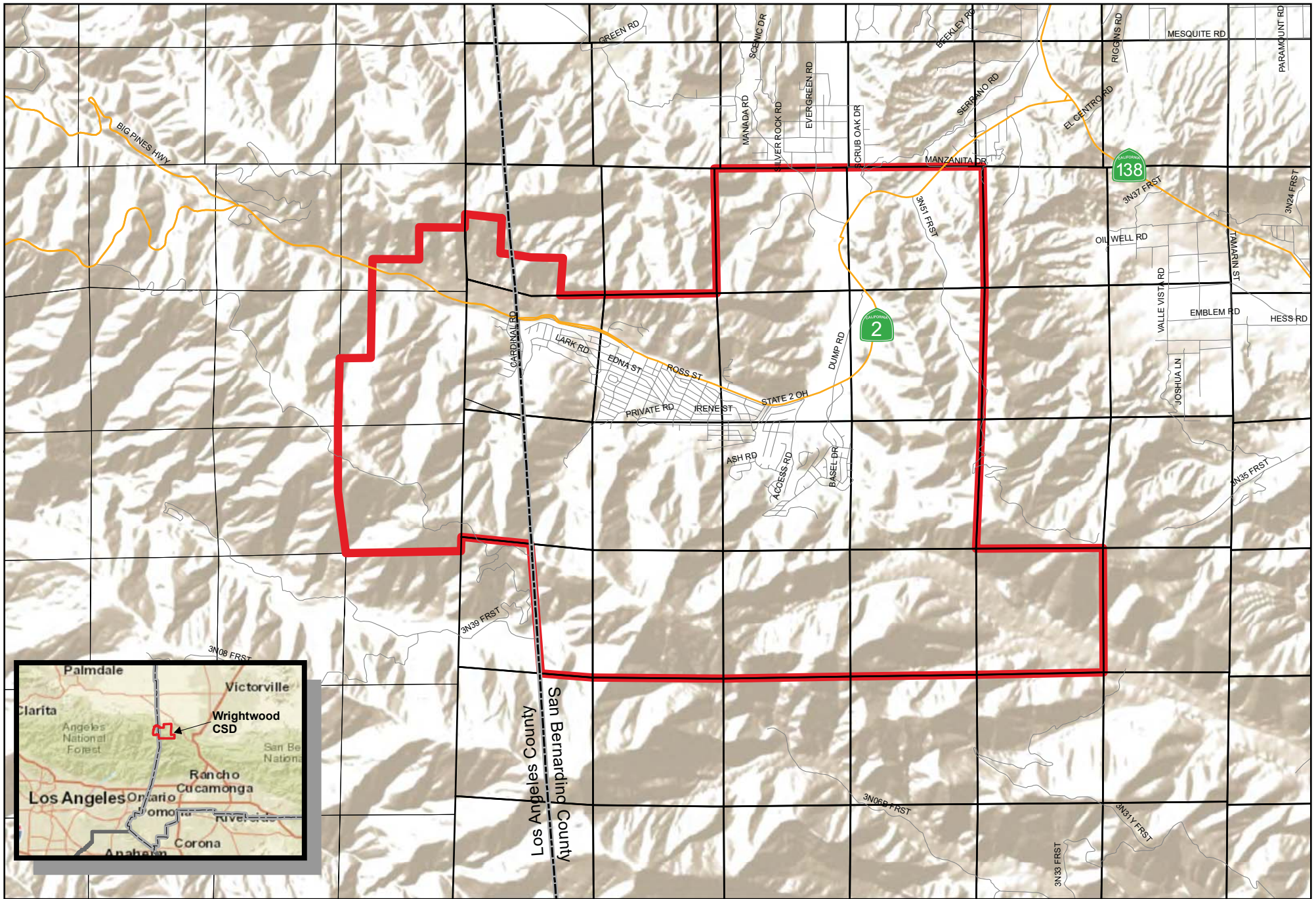
With regard to establishing a sphere of influence for the Wrightwood CSD, it has been the practice of the Commission that the sphere of influence establishment be coterminous with the agency's boundaries. This fulfills its requirement of establishing a sphere of influence for the newly formed agency within one year of its formation without obligating the agency to plan the extension of its range of services beyond its existing boundaries. In keeping with this practice, staff is recommending that the Commission initiate the sphere of influence establishment for the Wrightwood CSD to be conterminous with its existing boundaries within San Bernardino County.

Los Angeles LAFCO will also be taking an action to defer its service review for the Wrightwood CSD requesting that a single service review be conducted for the District as a whole by San Bernardino LAFCO as well as establishing a coterminous sphere of influence for the Wrightwood CSD for the District's boundaries within Los Angeles County.



As a sphere of influence proposal being initiated by the Commission, no filing fees will be assessed. However, if the Wrightwood CSD wishes to expand its sphere of influence establishment area beyond its existing boundaries and/or requests the activation/divestiture of function and/or service, that would then be an application subject to payment of all processing fees and deposits as well as submission of all required application materials.

KRM/sm

Attachment: Vicinity Map



Wrightwood Community Services District

 Wrightwood CSD
 Countyline

Date Created: 12/21/2017

