

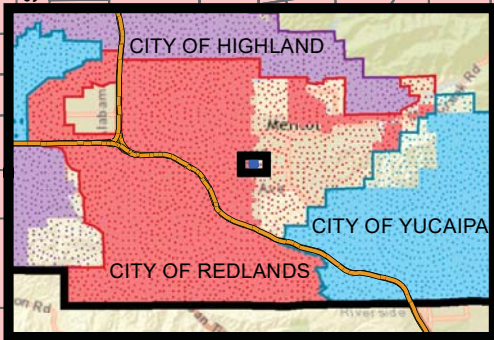
Vicinity Map and Reorganization Area Map

Attachment 1

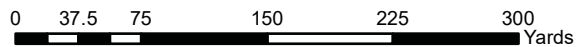
CITY OF REDLANDS

**LAFCO
3207**

*City of Redlands
Unincorporated
Sphere of Influence*



LAFCO 3207 – Reorganization to Include City of Redlands Annexation No. 94 and Detachment from the San Bernardino County Fire Protection District and its Valley Service Zone, and County Service Area 70 and its Zone P-7

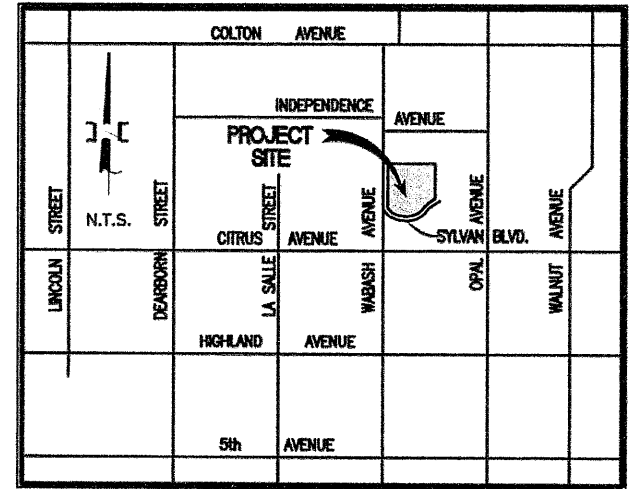


Date Created: 11/6/2017

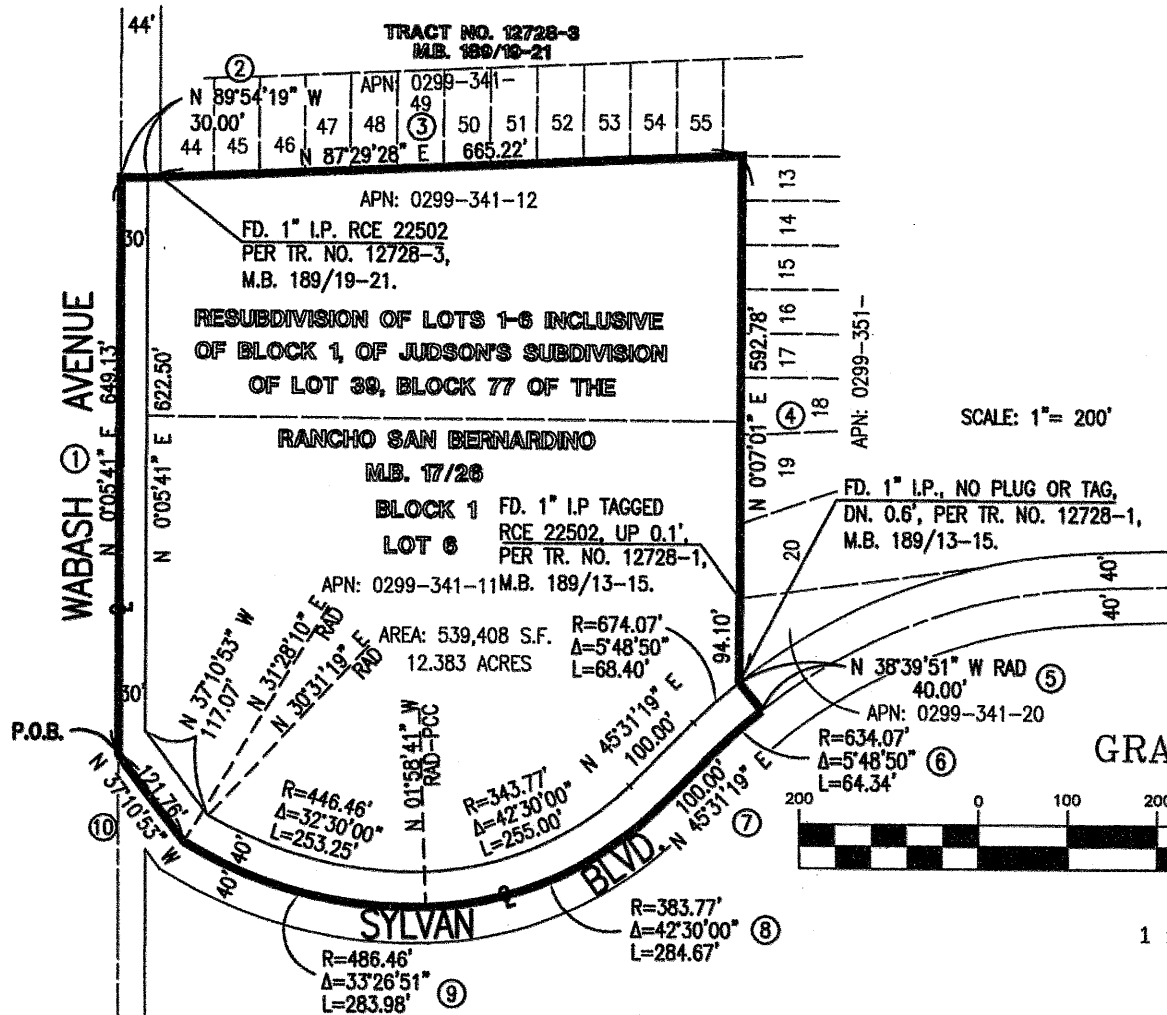


	Proposed Annexation Area
	City of Redlands

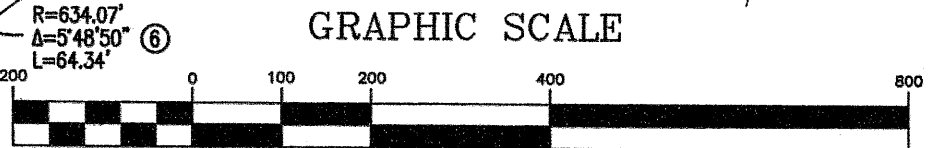
CITY OF REDLANDS ANNEXATION
 LOCATED AT THE NORTHEAST CORNER OF THE
 INTERSECTION OF WABASH AVENUE AND SYLVAN BOULEVARD.



VICINITY MAP
 N.T.S.



SCALE: 1" = 200'



GRAPHIC SCALE

(IN FEET)
 1 inch = 200 ft.