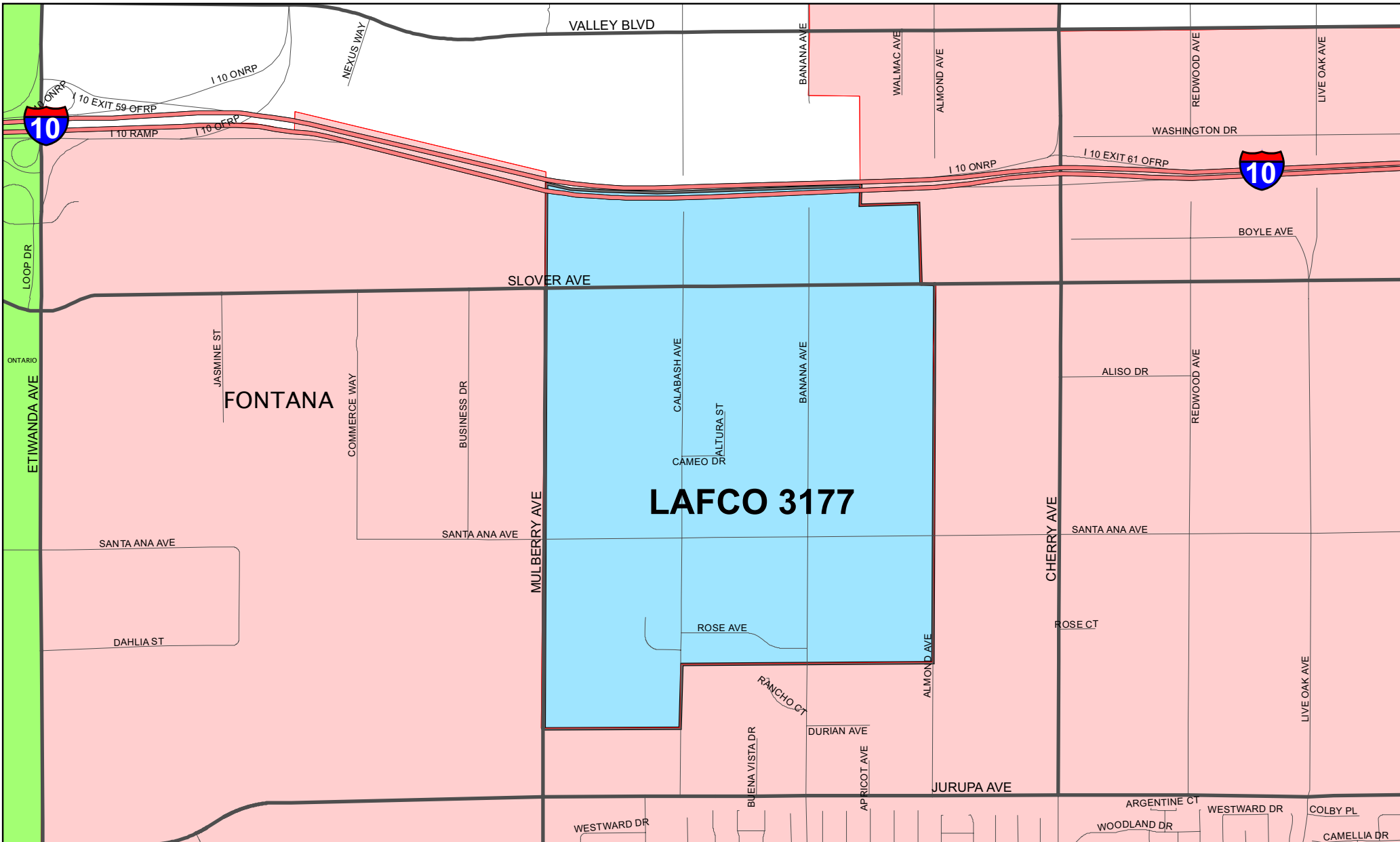


# **Vicinity and Location Maps of the Reorganization Area**

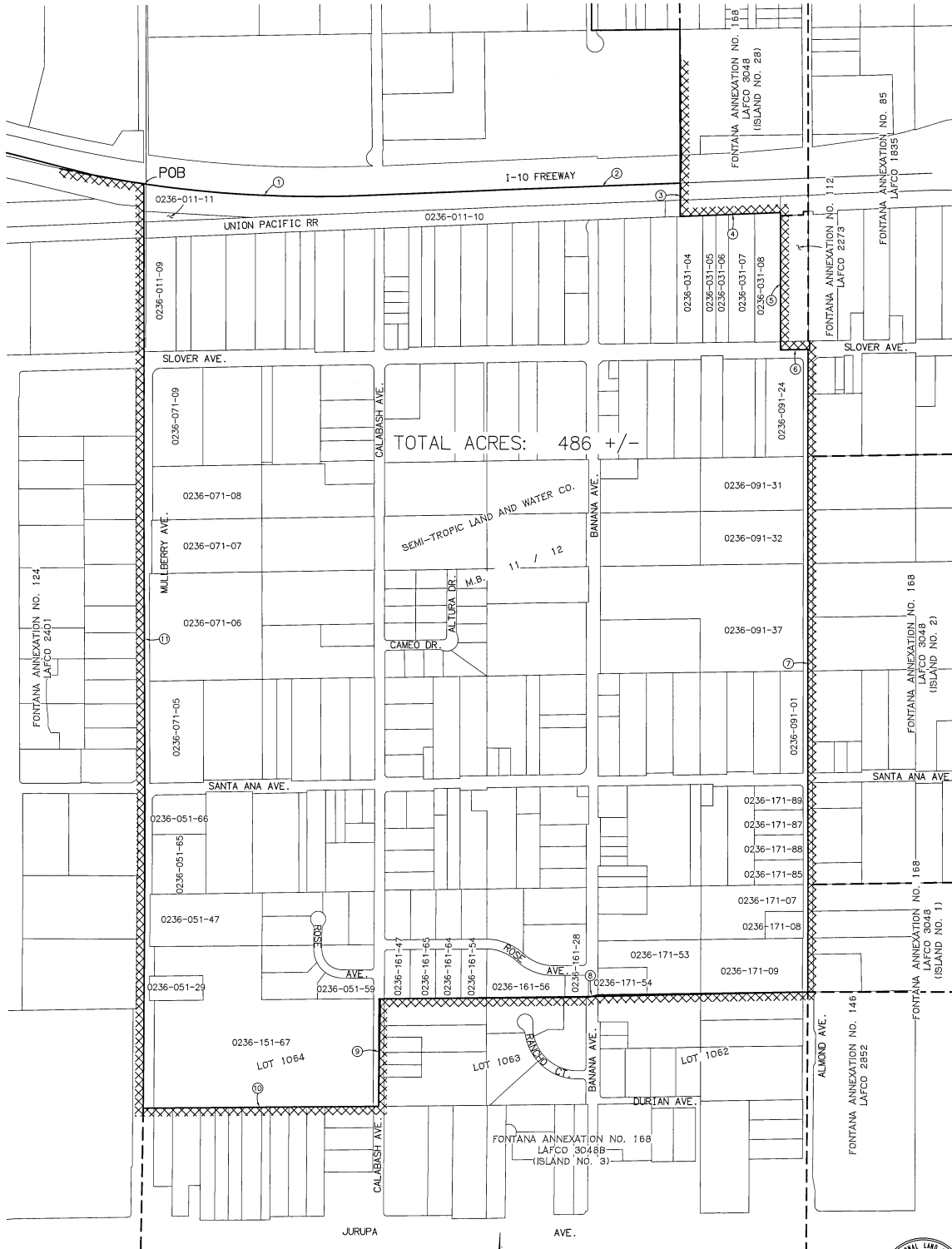
**Attachment 1**



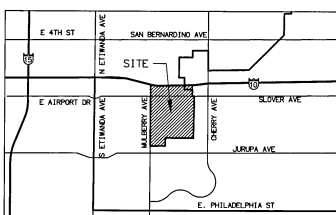
LAFCO 3177 – REORGANIZATION TO INCLUDE CITY OF FONTANA ANNEXATION NO. 173 AND DETACHMENT FROM COUNTY SERVICE AREAS 70 AND SL-1

- LAFCO 3177
- CITY OF FONTANA

- CITY OF ONTARIO

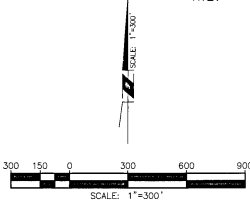


TOTAL ACRES: 486 +/-



VICINITY MAP

**RBF** CONSULTING  
 PLANNING ■ DESIGN ■ CONSTRUCTION  
 4080 COUNTY CENTER DRIVE, SUITE 100  
 TEMECULA, CALIFORNIA 92591-6022  
 9516768042 • FAX 9516767240 • WWW.RBF.COM



REVISED MAP: #2 3/4/14

LEGEND: SECS 22, 27 T1S, R6W, SBM

- PROPOSED ANNEXATION
- ▨ EXISTING CITY OF FONTANA LIMITS
- - - PREVIOUS ANNEXATION

*John Duquette*  
 JOHN DUQUETTE, LS 7566  
 EXPIRES: 12/31/15

3/1/14  
 DATE



LAFCO NO. 3177  
 REORGANIZATION TO INCLUDE CITY OF FONTANA ANNEXATION NO. 173 AND DETACHMENT FROM COUNTY SERVICE AREAS 70 AND SL-1  
 GENERAL LOCATION: ALMOND AVE / INT. 10, JURUPA AVE., MULBERRY AVE.  
 AFFECTED AGENCIES:  
 CITY OF FONTANA, CSA 70, CSA SL-1

**CITY OF FONTANA**  
 8353 SIERRA AVENUE  
 FONTANA, CA 92335

SHEET