


# LOCAL AGENCY FORMATION COMMISSION FOR SAN BERNARDINO COUNTY

215 North D Street, Suite 204, San Bernardino, CA 92415-0490  
(909) 383-9900 • Fax (909) 383-9901  
E-MAIL: [lafco@lafco.sbcounty.gov](mailto:lafco@lafco.sbcounty.gov)  
[www.sbclafco.org](http://www.sbclafco.org)

---

**DATE:** JULY 8, 2014   
**FROM:** KATHLEEN ROLLINGS-McDONALD, Executive Officer  
**TO:** LOCAL AGENCY FORMATION COMMISSION

---

**SUBJECT:** Agenda Item #10: Consideration of: LAFCO 3180 – Reorganization to Include Annexations to County Service Area 54, Detachment from County Service Area SL-1 and Dissolution of County Service Area 73 and Zone A of County Service Area 53 (Streetlight Reorganization for the Mountain Region)

---

## **RECOMMENDATION:**

Staff recommends that the Commission continue consideration of LAFCO 3180 to the August 20, 2014 hearing.

## **BACKGROUND:**

LAFCO 3180 is the companion proposal to LAFCO 3179, which proposes a reorganization that includes annexations to CSA 54, a detachment from CSA SL-1, and dissolutions of CSAs 73 and 53 Zone A.

LAFCO 3180 has been initiated by the County in order to consolidate streetlighting services within the mountain region into a single county service area to reduce administrative and other overhead charges while maintaining the current level of service.

LAFCO staff is working diligently with both Southern California Edison and Bear Valley Electric staff on verifying the streetlighting information for the affected entities, i.e., number of lights to be transferred, etc. In order to provide a thorough review of the information, staff is recommending that the matter be continued to the August 20, 2014 hearing to allow staff more time to evaluate and verify the information received from both parties.

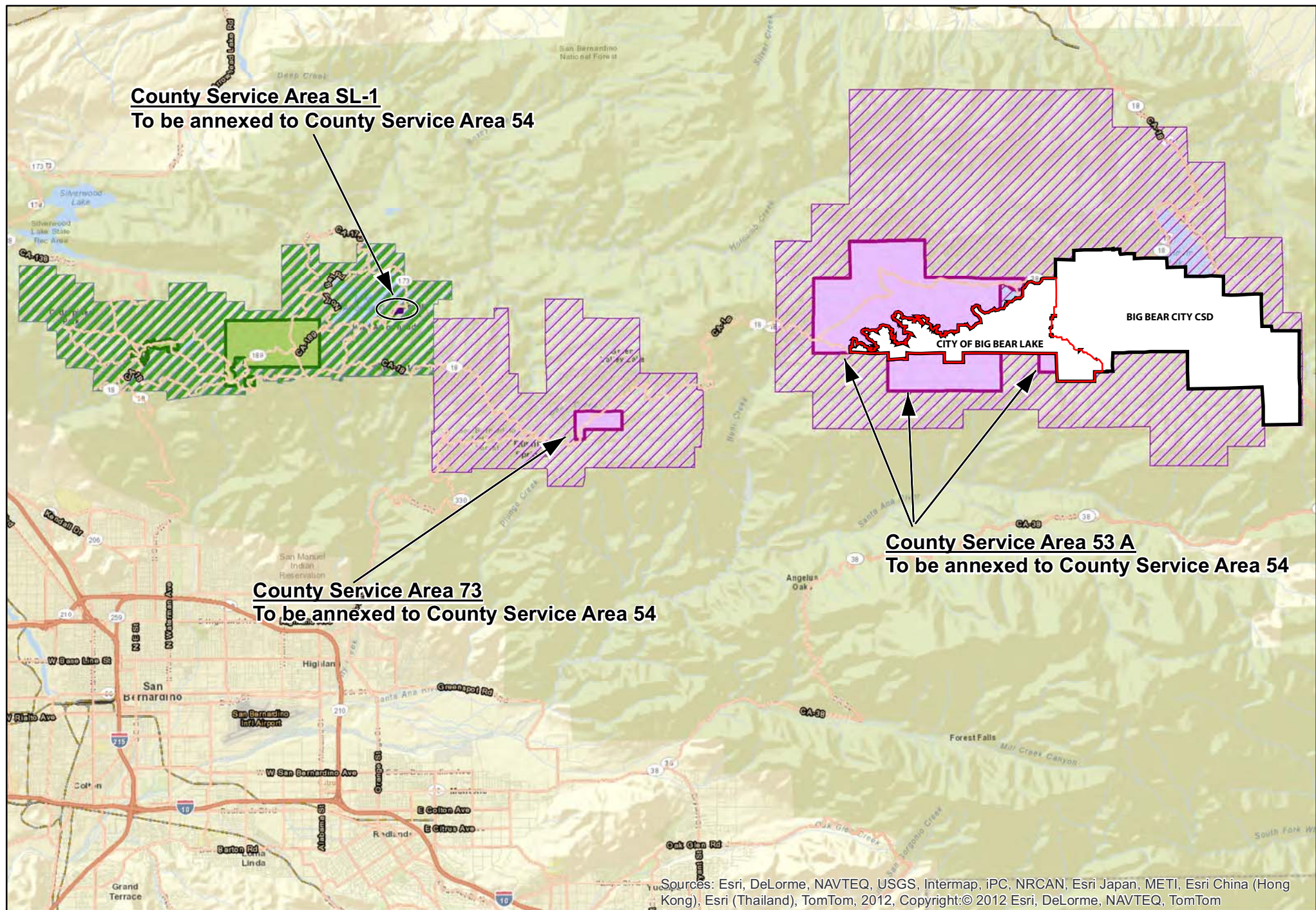
SM/krm

Attachment:  
Vicinity Map for LAFCO 3180

**County Service Area SL-1**  
**To be annexed to County Service Area 54**

**County Service Area 73**  
**To be annexed to County Service Area 54**

**County Service Area 53 A**  
**To be annexed to County Service Area 54**



Sources: Esri, DeLorme, NAVTEQ, USGS, Intermap, iPC, NRCAN, Esri Japan, METI, Esri China (Hong Kong), Esri (Thailand), TomTom, 2012, Copyright:© 2012 Esri, DeLorme, NAVTEQ, TomTom

**LAFCO 3180 – Reorganization to Include Annexations to County Service Area 54, Detachment from County Service Area SL-1 and Dissolution of County Service Area 73 and Zone A of County Service Area 53 (Streetlight Reorganization for the Mountain Region)**

CSA 54
  CSA 54 ExistingSphere
  CSA 54 Sphere Expansion Areas
  Areas to be annexed to County Service Area 54