

**APPENDIX C**  
*Arroyo Toad Survey Memo*





# Interoffice Memo

DATE: August 2, 2017

PHONE: 387-8109

FROM: **BRANDY WOOD**, Ecological Resource Specialist  
Environmental Management Division

MAIL CODE: 0835

TO: **MICHELE DERRY**, Senior Planner  
Environmental Management Division

File: 4-101

---

**SUBJECT: 2015 ARROYO TOAD PROTOCOL SURVEYS**

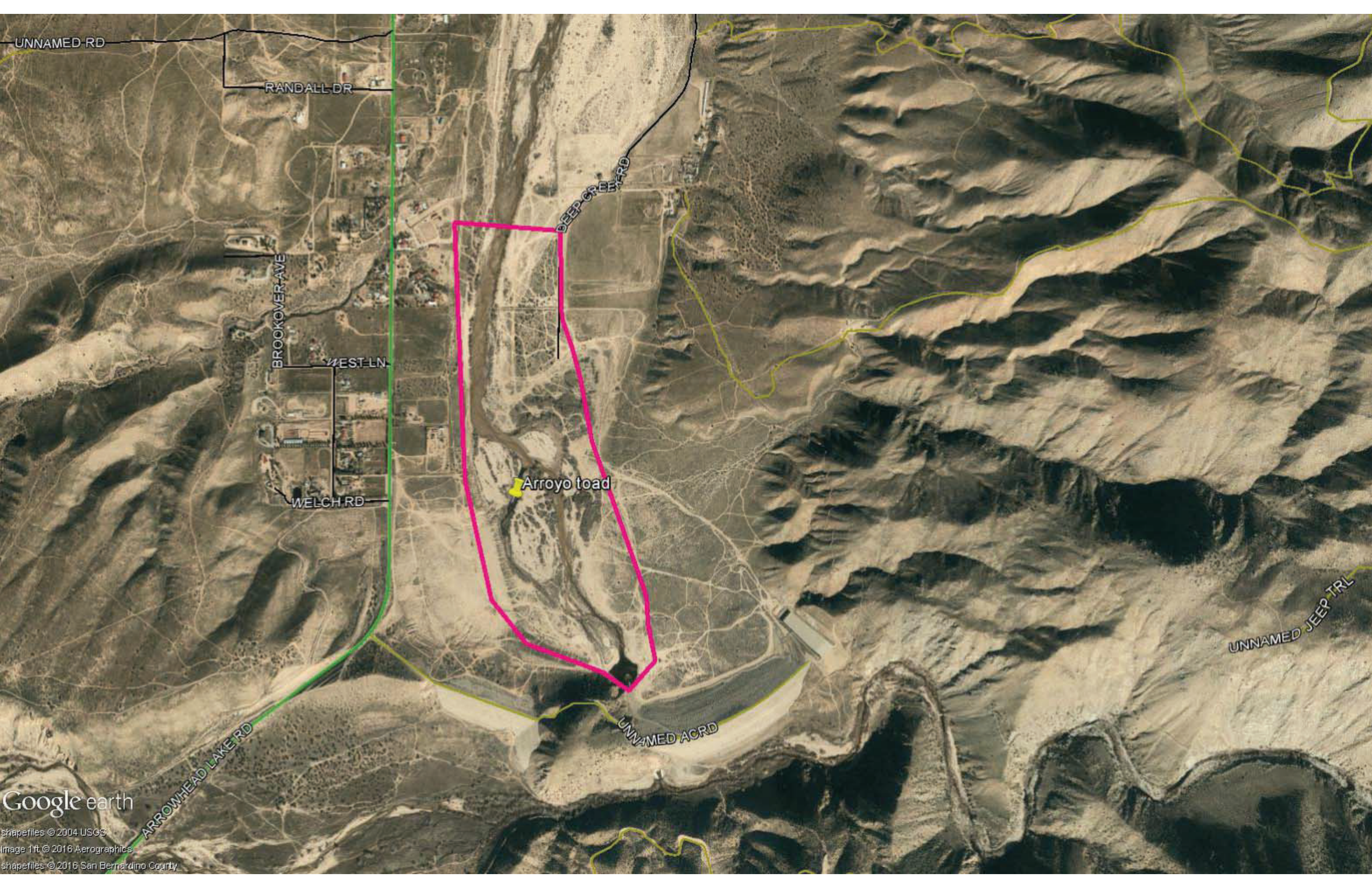
---

Protocol Arroyo Toad surveys were completed in the spring of 2015 by District Ecological Resource Specialists (ERS) in accordance with the U.S. Fish and Wildlife Service protocol (<https://www.fws.gov/pacific/ecoservices/endangered/recovery/documents/ArroyoToad.1999.protocol.pdf>).

Date	Biologists	Weather and site Conditions
4/31/2015	T. Sims and B. Wood	ERS arrived an hour before sunset. ERS noted a large presence of off-road vehicles driving in and around the water. No tadpoles or egg masses were observed. Arroyo toad began calling immediately after sunset. Observed pair in amplexus. Survey was completed immediately.
5/21/2015	T. Sims and K. Romich	ERS arrived just before sunset. Very windy conditions. No ARTO found. No tadpoles or egg masses were observed.
5/28/2015	K. Romich and B. Wood	ERS arrived just before sunset. Large crowd of off-roaders present. No tadpoles or egg masses were observed. Arroyo toad heard within wetland area an hour after sunset.

According to the protocol, areas within one kilometer (1 km) of arroyo toad sites (documented by the presence of eggs, larvae, juveniles or adults) that have suitable habitat shall be presumed to have arroyo toads. Attached is a Google Earth map demonstrating this area based on our 2015 results. The southern extent of the polygon was cut off by the dam.





UNNAMED RD

RANDALL DR

BROOKOVER AVE

WEST LN

WELCH RD

DEEP CREEK RD

Arroyo toad

UNNAMED ACRD

UNNAMED JEEP TRL

Google earth

shapefiles © 2004 USGS  
Image 1ft © 2016 Aerographics  
shapefiles © 2016 San Bernardino County

