



# NEWS



## News Headlines 7/6/2016

- Major Injury Accident on Highway 18 (PHOTO UPDATE)
- Fatal Accident on SR-38

## Major Injury Accident on Highway 18 (PHOTO UPDATE)

Michael P. Neufeld, Rim of the World News

Posted: July 5, 2016, 12:50 AM



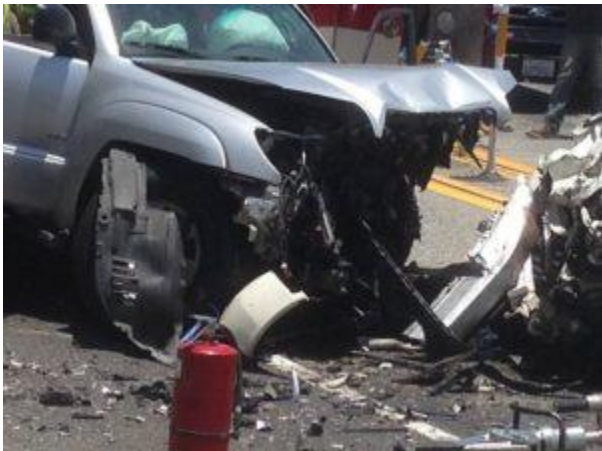
Emergency personnel attend to injured parties involved in the multi-vehicle accident on Highway 18 near Panorama Point in the Crestline area. (Photo by Charlie Farrell)

PHOTO UPDATE – Wednesday, July 6 – 3:54 a.m.

Crestline, CA – A multi-vehicle accident on Highway 18 a short distance from the Crestline Bridge closed the roadway for an extended period while emergency personnel attended to injured, airlifted two patients to Arrowhead Regional Medical Center and cleared the roadway.

The California Highway Patrol is scheduled to issue a press release Wednesday morning.

ROTWNEWS.com will provide that information when it becomes available.



San Bernardino County Fire personnel had to extricate at least one person from a vehicle following the crash that badly damaged several vehicles. (Photo by Charlie Farrell)



A patient is transferred from an ambulance to Air Rescue 06. (Photo by San Bernardino County Fire)



The landing zone for Air Rescue 06 was Panorama Point on Highway 18. (Photo by San Bernardino County Fire)



Traffic on Highway 18 near Crestline was backed up for miles as emergency personnel attended to injured parties and the roadway was cleared, (Photo by Heather Holland/RimTraffic)



The major injury accident occurred just before 1 p.m. on Highway 18 at about the 4,000-foot level. (Photo by Charlie Farrell)

UPDATE 7: Tuesday, July 5 – 3:37 p.m

Crestline, CA – All lanes on Highway 18 near Panorama Point on Highway 18 are now open, according to the California Highway Patrol.

UPDATE 6: Tuesday, July 5 – 2:37 p.m

Crestline, CA – The CHP is now reporting it is alternating traffic while the southbound lanes are being cleared.

UPDATE 5: Tuesday, July 5 – 2:21 p.m

Crestline, CA – The traffic accident that closed Highway 18 for a time happened in the area of the traffic delineators...just a short distance from the Three-Beam Median Project that is being constructed from Highway 138 in Crestline and Sierra Way in San Bernardino.



As many as five cars were involved in the major traffic incident on Highway 18. (Photo by Charlie Farrell)

UPDATE 4: Tuesday, July 5 – 2:15 p.m.

Crestline, CA – The CHP is now reporting traffic is being diverted around the accident.

UPDATE 3: Tuesday, July 5 – 1:52 p.m.

Crestline, CA – Air Rescue 06 is transporting two patients to an area trauma center and the second medical ambulance (Marcy Air 22) has been cancelled.

UPDATE 2: Tuesday, July 5 – 1:46 p.m.

Crestline, CA – The extrication of one of the patients is now complete, according to **San Bernardino County Fire**.

Emergency responders report two immediate patients and 6 delayed patients.

The roadway remains closed as tow companies and CHP work to clear the roadway.

UPDATE: Tuesday, July 5 – 1:42 p.m.

Crestline, CA – The accident that was reported at 12:51 p.m. involves three vehicles according to the CHP –a white Toyota Camry, White Acura sedan and a grey Toyota 4 Runner.

At least one person had to be extricated from their vehicle.

The vehicles were blocking all lanes of traffic.

#### ORIGINAL STORY

Crestline, CA – A major injury accident on Highway 18 near the Crestline Bridge has the roadway blocked, according to the California Highway Patrol.

Two medical air ambulances and three ground ambulances have been requested.

Additional details shortly.

<http://rotwnews.com/2016/07/05/breaking-news-major-injury-accident-on-highway-18-near-crestline-bridge/>

## Fatal Accident on SR-38

Cathy Herrick, KBHR

Posted: 07/05/2016

Big Bear Lake, CA, July 5, 2016 – On the morning of Sunday, July 3rd, Arrowhead Area CHP officers responded to the scene of a traffic collision on SR-38, also known as North Shore Drive, west of Minnesula Road by Juniper Point. Eric Rhydale Caston, a 35 year old resident of Big Bear City, California, was driving west on the 38 in a White, Ford, F-250. For an unknown reason, Caston allowed his vehicle to travel off the road and down an embankment. Caston was not wearing his seatbelt and was ejected from his vehicle. As a result, he sustained fatal injuries and was pronounced deceased at the scene by **San Bernardino County Fire** personnel. The accident is under investigation.

<http://kbhr933.com/current-news/fatal-accident-sr38/>

[Find the archived News Clips Here](#)