

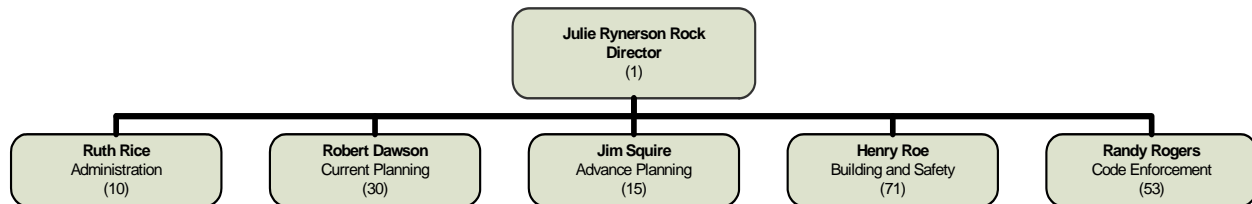
# LAND USE SERVICES

## Julie Rynerson Rock

### MISSION STATEMENT

The Land Use Services Department is dedicated to ensuring a balance in the areas of housing, business, and recreational needs for the diverse cultures and communities of San Bernardino County. This is accomplished through comprehensive regional planning and enforcement of building standards, land uses, and environmental impacts.

### ORGANIZATIONAL CHART



### STRATEGIC GOALS

1. Advance Planning: Decrease processing times for initial Environmental Review for applications submitted to the Current Planning Division.
2. Current Planning: Decrease the processing time for "applications accepted" as complete or return to applicant in a timely fashion.
3. Building and Safety: Decrease the processing time for plan review services to the adopted service standards of residential - 10 working days; subdivisions and multi-residential - 20 working days; and grading and non residential - 30 working days.
4. Code Enforcement: Increase the number of initial inspections performed from the date of receiving complaint.
5. Fire Hazard Abatement: Decrease the processing time for abatements requiring a warrant.

PERFORMANCE MEASURES				
Description of Performance Measure	2007-08 Actual	2008-09 Target	2008-09 Estimate	2009-10 Target
Percentage of applications processed for initial environmental review within five working days. (2007-08 - 249 Applications required an ER)	N/A	New	90%	95%
Percentage of applications accepted as complete or returned to applicant within proposed time frame. (2007-08 - 873 Applications were filed)	98%	99%	99%	99%
Percentage of plan reviews completed within proposed time frames. (2007-08 - 4,719 Plan Reviews completed)	95%	98%	98%	99%
Percent of initial inspections completed within one week of receiving complaint. Base is 5,000 estimated complaints per fiscal year.	N/A	New	70%	72%
Percent of abatements performed within four weeks of posting a warrant.	N/A	New	80%	90%



**SUMMARY OF BUDGET UNITS**

	<b>2009-10</b>			
	<b>Appropriation</b>	<b>Revenue</b>	<b>Local Cost</b>	<b>Staffing</b>
<b><u>General Fund</u></b>				
Land Use Services - Administration	-	-	-	11
Land Use Services - Current Planning	3,165,256	3,165,256	-	30
Land Use Services - Advance Planning	3,929,714	2,437,633	1,492,081	15
Land Use Services - Building and Safety	8,390,773	8,390,773	-	71
Land Use Services - Code Enforcement	4,418,196	859,800	3,558,396	31
Land Use Services - Fire Hazard Abatement	2,888,411	2,888,411	-	22
Total General Fund	22,792,350	17,741,873	5,050,477	180

Detailed information for each departmental budget unit follows, along with a description of the services provided, budget unit history and analysis of the budget unit.

