

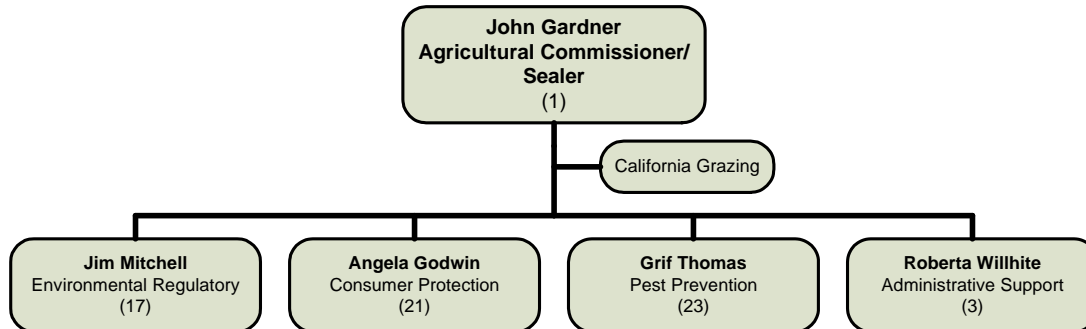
AGRICULTURE/WEIGHTS & MEASURES

John Gardner

MISSION STATEMENT

The Department of Agriculture/Weights and Measures protects the environment, agricultural industry, businesses and consumers of this state and county through regulation and satisfies its customers by providing services that promote the health, safety, well being, and quality of life of its residents according to the County Charter, general laws, and the will of the customers it serves.

ORGANIZATIONAL CHART



STRATEGIC GOALS

1. Protect the public's health and the environment by preventing foreign pest infestations and the misuse of pesticides in light of increases in county population.
2. Protect county residents from being overcharged for purchased goods by ensuring accuracy in the weight and measurement of commodities sold, and prices charged by retail businesses that utilize barcode scanning equipment.

PERFORMANCE MEASURES				
Description of Performance Measure	2007-08 Actual	2008-09 Target	2008-09 Estimate	2009-10 Target
Percentage of terminals inspected on a daily basis (# of terminals).	N/A	100% (10)	100% (10)	100% (10)
Average number of trap placements per month.	6300	6100	6200	6200
Percentage increase of inspections for pesticide applications that are performed by agricultural companies (actual number of inspections).	N/A (baseline of 362)	New	3% (373)	3% (384)
Percentage of all registered businesses inspected that require a weights and measures inspection (# of businesses inspected).	100% (3,600)	100% (3,650)	95% (3,467)	95% (3,467)

The Consumer Protection Division has realized a growth during 2008-09 in new registered businesses requiring a weights and measures inspection (the 4th performance measure listed above). Due to this growth and position reductions, the 2008-09 estimate of inspected businesses is set at 95%.



SUMMARY OF BUDGET UNITS

	2009-10				
	Appropriation	Revenue	Local Cost	Fund Balance	Staffing
<u>General Fund</u>					
Agriculture/Weights & Measures	6,334,081	4,378,133	1,955,948		65
Total General Fund	6,334,081	4,378,133	1,955,948		65
<u>Special Revenue Fund</u>					
California Grazing	137,405	800		136,605	-
Total Special Revenue Fund	137,405	800		136,605	-
Total - All Funds	6,471,486	4,378,933	1,955,948	136,605	65

Detailed information for each departmental budget unit follows, along with a description of the services provided, budget unit history and analysis of the budget unit.

