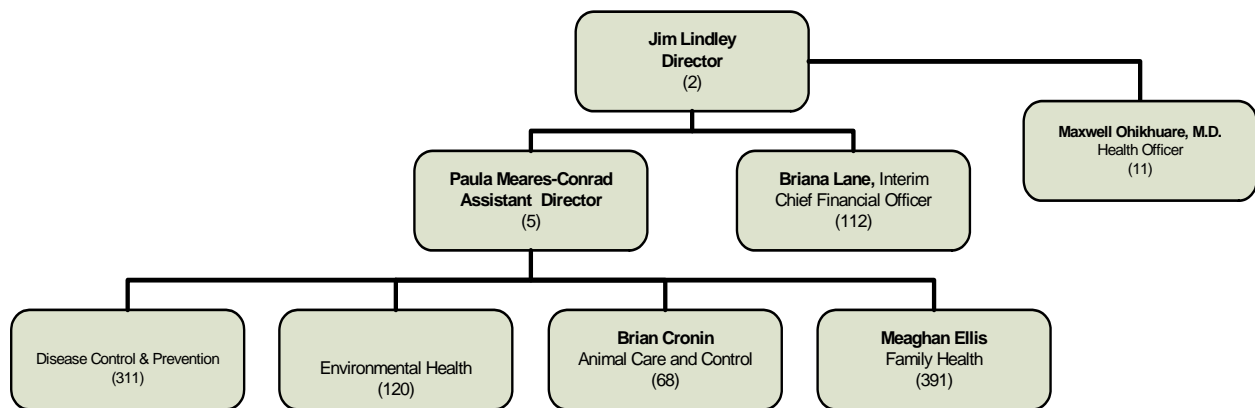


## PUBLIC HEALTH Jim Lindley

### MISSION STATEMENT

The Public Health Department promotes and improves the health, safety and quality of life of San Bernardino residents and visitors.

### ORGANIZATIONAL CHART



### STRATEGIC GOALS

1. Prevent disease and disability and promote healthy lifestyles.
2. Promote and ensure a healthful environment.
3. Develop integrated Countywide community clinical services.

PERFORMANCE MEASURES				
Description of Performance Measure	2007-08 Actual	2008-09 Target	2008-09 Estimate	2009-10 Target
Percentage increase of pregnant women screened for drug use.	6% (10,273)	10%	11% (11,400)	5%
Number of visits to immunization providers with less than 90% of children up-to-date for age per the Advisory Committee on Immunization Practice's recommended immunization schedule.	N/A	New	151	200
Percentage increase of restaurant food handlers receiving training and certification.	9% (39,065)	10%	10% (42,972)	5%
Increase the number of municipalities that participate in the New Animal Care and Control Joint Powers Authority.	N/A	4	1	2
Produce individual plans detailing patient demographics, site locations, systems integration, fiscal requirements and program design for two of the proposed integrated service models in the eleven identified catchment areas throughout the county.	N/A	New	75% Complete July 2009	Complete January 2010

**SUMMARY OF BUDGET UNITS**

	2009-10				Staffing
	Appropriation	Revenue	Local Cost	Fund Balance	
<b><u>General Fund</u></b>					
Public Health	83,092,275	79,820,646	3,271,629		863
California Children's Services	18,031,236	13,421,503	4,609,733		157
Indigent Ambulance	472,501		472,501		-
<b>Total General Fund</b>	<b>101,596,012</b>	<b>93,242,149</b>	<b>8,353,863</b>		<b>1,020</b>
<b><u>Special Revenue Funds</u></b>					
Bio-Terrorism Preparedness	2,981,710	2,576,813		404,897	-
Tobacco Use Reduction Now	481,194	403,760		77,434	-
Vital Statistics State Fees	720,307	150,752		569,555	-
Vector Control Assessments	3,512,166	1,634,436		1,877,730	-
<b>Total Special Revenue Funds</b>	<b>7,695,377</b>	<b>4,765,761</b>		<b>2,929,616</b>	<b>-</b>
<b>Total - All Funds</b>	<b>109,291,389</b>	<b>98,007,910</b>	<b>8,353,863</b>	<b>2,929,616</b>	<b>1,020</b>

Detailed information for each departmental budget unit follows, along with a description of the services provided, budget unit history and analysis of the budget unit.

