

ASSESSOR

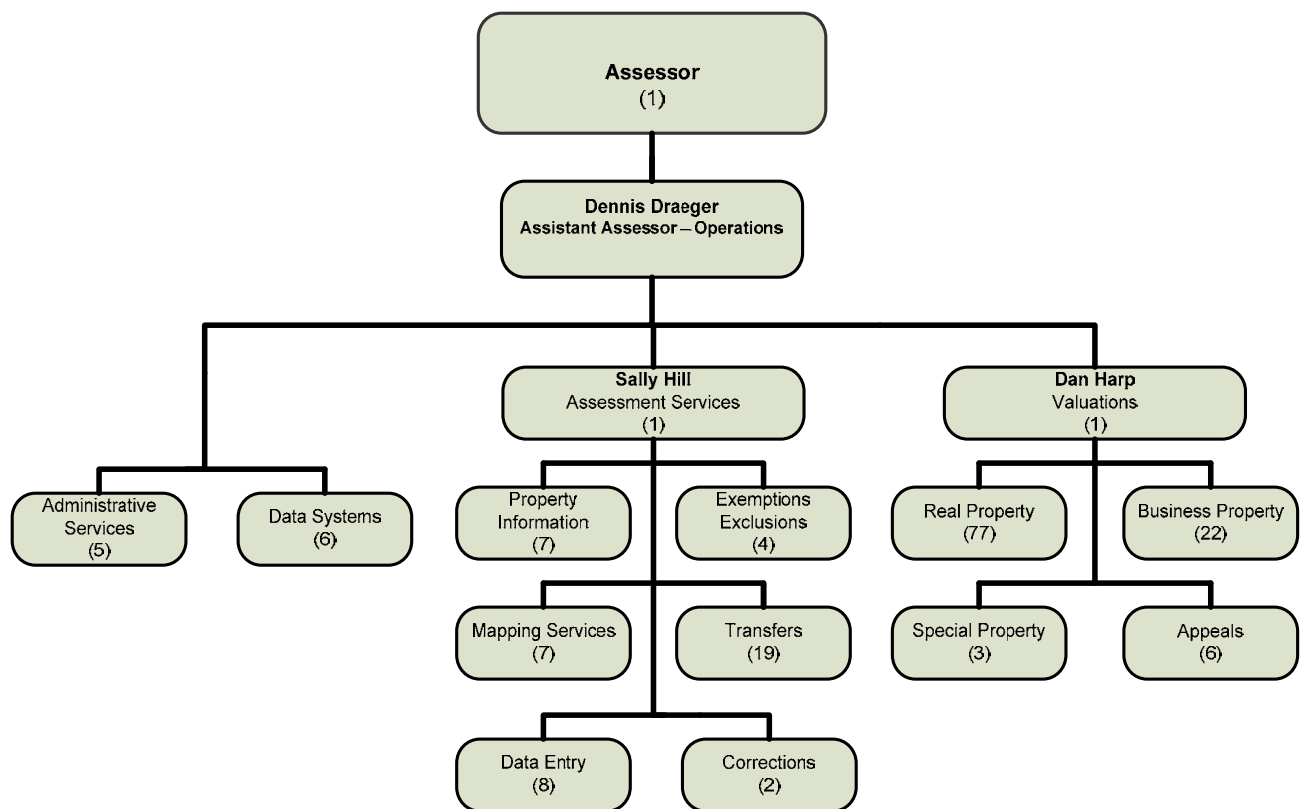
MISSION STATEMENT

The Office of the Assessor performs the state mandated functions to:

- a. Locate, describe, and identify ownership of all property within the county.
- b. Establish a taxable value for all property subject to taxation.
- c. List all taxable value on the assessment roll.
- d. Apply all legal exemptions.

Assessor business is performed for the public benefit in a manner that is fair, informative and with uniform treatment. It is necessary as a means of revenue generation in order to fund essential public services and efficiently operate county and state government for the people.

ORGANIZATIONAL CHART



STRATEGIC GOALS

- 1. Publish the annual assessment roll timely and accurately.
- 2. Make property valuation information more accessible and easier to understand.
- 3. Enhance operational efficiency and productivity by implementing new technology, policies and procedures.



PERFORMANCE MEASURES				
Description of Performance Measure	2007-08 Actual	2008-09 Target	2008-09 Estimate	2009-10 Target
Percentage complete of change of ownership documents received for each assessment year.	99.5%	99.5%	99.5%	95.5%
Percentage complete of appraisable events received for each assessment year (e.g. changes of ownership, new construction, etc.).	98%	93%	93%	90%
Percentage complete of timely filed claims for exemption (e.g. homeowner's, welfare, church, etc.) received for each assessment year.	99.5%	99.5%	99.5%	95.5%
Percentage increase in staff training hours (e.g. Continuing Education Units training required to maintain appraisal certifications; training to update staff on continually changing property tax administration laws; refresher training in public service skills, etc.).	N/A	N/A	N/A	2%

