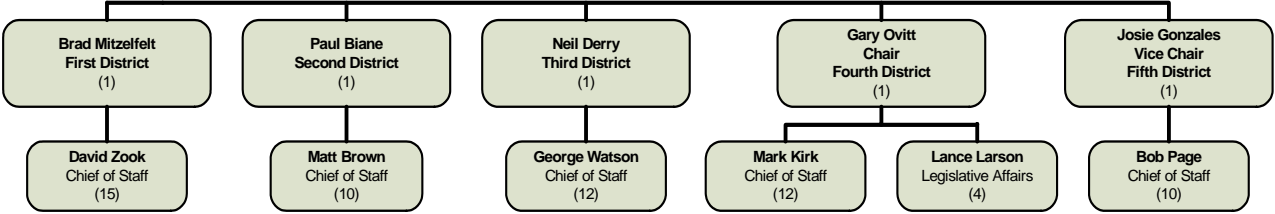


BOARD OF SUPERVISORS

Gary C. Ovitt, Chairman

ORGANIZATIONAL CHART



SUMMARY OF BUDGET UNITS

	2009-10			
	Appropriation	Revenue	Local Cost	Staffing
General Fund				
Board of Supervisors	7,519,518	-	7,519,518	68
Priority Policy Needs	3,750,000	-	3,750,000	-
Board Elective Funding		-	-	-
Total General Fund	11,269,518	-	11,269,518	68

Detailed information for each departmental budget unit follows, along with a description of the services provided, budget unit history and analysis of the budget unit.

