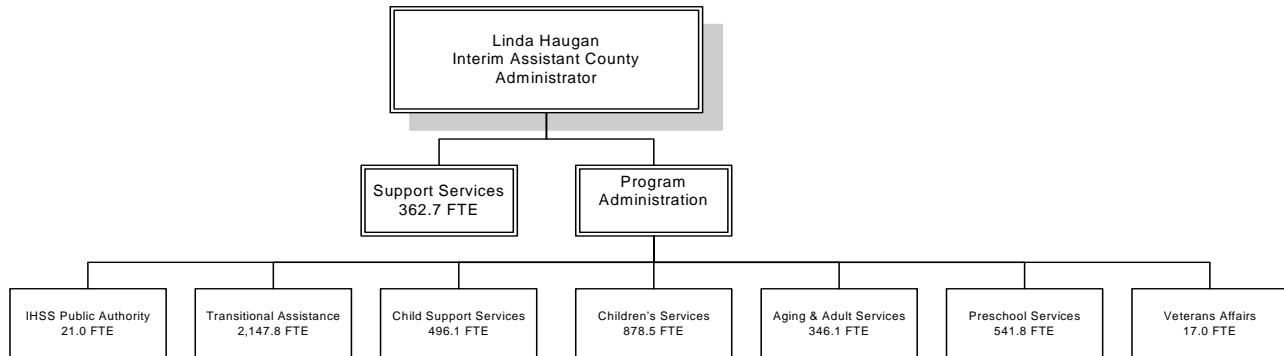


## HUMAN SERVICES SYSTEM Linda Haugan

### ORGANIZATIONAL CHART



### SUMMARY OF BUDGET UNITS

	2005-06				
	Appropriation	Revenue	Local Cost	Fund Balance	Staffing
<b>General Fund</b>					
Child Support Services	39,527,043	39,527,043	-		496.0
Dept of Aging & Adult Services-Aging Programs	8,836,239	8,836,239	-		101.9
Public Guardian	844,100	765,255	78,845		27.0
HSS Administrative Claim	333,606,141	317,118,021	16,488,120		3,607.3
HSS Subsistence Payments	469,007,259	445,632,582	23,374,677		-
HSS Aid to Indigents (General Relief)	1,446,420	370,256	1,076,164		-
Veterans Affairs	1,195,333	331,117	864,216		17.0
Total General Fund	854,462,535	812,580,513	41,882,022		4,249.2
<b>Special Revenue Funds</b>					
Preschool Services	38,639,224	38,639,224		-	541.8
AB 212-Teacher Stipends	653,453	636,230		17,223	-
Total Special Revenue Fund	39,292,677	39,275,454		17,223	541.8
<b>Other Agency Fund</b>					
IHSS Public Authority	6,054,185	4,701,639		1,352,546	21.0
Totals	899,809,397	856,557,606	41,882,022	1,369,769	4,811.9

The Human Services System (HSS) is composed of six county departments: Transitional Assistance, Children's Services, Aging and Adult Services, Preschool Services, Child Support Services, and Veterans Affairs. Additionally, several support divisions under HSS Management Services (including HSS Information Technology and Support (ITSD), and the Performance, Education and Resource Center (PERC)) provide administrative and training support to the HSS departments.

Transitional Assistance, Children's Services, Adult Services, and all HSS support divisions are included in the HSS Administrative Claim process. The purpose of the claim process is to provide the county with the means for determining the costs applicable to each of the numerous welfare programs. This cost determination is necessary to satisfy federal and state reporting and funding requirements, and to determine appropriate federal and state financial reimbursement to the county for each of the welfare programs.

Subsistence Payments and Aid to Indigents (general relief) are either direct payments to welfare recipients or payments to organizations that provide service to the welfare recipients. The HSS Assistant County Administrator is responsible for all of the above budget units.

