

## Regional Parks Snack Bars

### DESCRIPTION OF MAJOR SERVICES

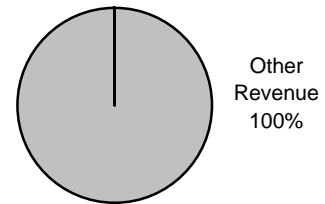
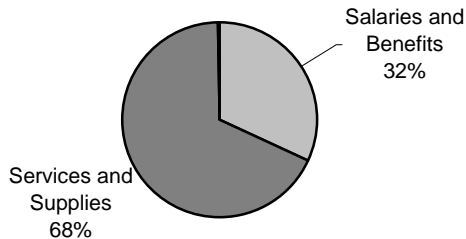
The Regional Parks Division provides staff to operate three snack bars located at the following parks: Glen Helen (island site), Lake Gregory, and Mojave Narrows. Enterprise funds were established for each snack bar to provide management with sound accountability and timely reports. Excess revenue resulting from operations is used to enhance the snack bars or other park operations. Snack bars at other regional parks (Cucamonga-Guasti, Yucaipa, Prado and Glen Helen swimming complex) are operated by a Board-approved private contractor.

### BUDGET AND WORKLOAD HISTORY

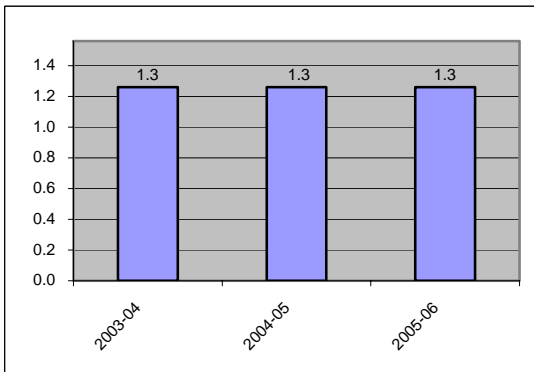
	Actual 2003-04	Budget 2004-05	Estimate 2004-05	Proposed 2005-06
Appropriation	78,182	67,603	76,247	73,245
Departmental Revenue	54,097	76,000	82,105	82,000
Revenue Over/(Under) Expense	(24,085)	8,397	5,858	8,755
Budgeted Staffing		1.3		1.3
Fixed Assets	-	-	-	-
Unrestricted Net Assets Available at Year End	44,607		50,465	

### 2005-06 BREAKDOWN BY EXPENDITURE AUTHORITY

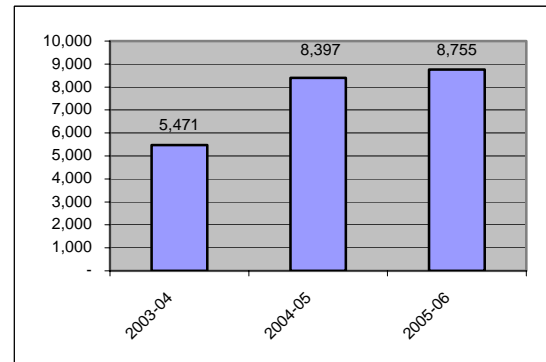
### 2005-06 BREAKDOWN BY FINANCING SOURCE



### 2005-06 STAFFING TREND CHART



### 2005-06 REVENUE OVER/(UNDER) TREND CHART



GROUP: Econ Dev/Public Svc  
 DEPARTMENT: Public Works - Regional Parks  
 FUND: Park Snack Bars

BUDGET UNIT: EMO, EMP, EMT  
 FUNCTION: Recreation and Cultural Services  
 ACTIVITY: Recreational Facilities

## ANALYSIS OF 2005-06 BUDGET

	A	B	C	D	B+C+D E	F Department Recommended Funded Adjustments (Schedule A)	E+F G 2005-06 Proposed Budget
	2004-05 Year-End Estimates	2004-05 Final Budget	Cost to Maintain Current Program Services	Board Approved Adjustments	Board Approved Base Budget		
<b>Appropriation</b>							
Salaries and Benefits	21,300	21,413	-	-	21,413	2,069	23,482
Services and Supplies	54,700	46,000	-	-	46,000	3,500	49,500
Transfers	247	190	-	-	190	73	263
Total Appropriation	76,247	67,603	-	-	67,603	5,642	73,245
<b>Departmental Revenue</b>							
Other Revenue	82,105	76,000	-	-	76,000	6,000	82,000
Total Revenue	82,105	76,000	-	-	76,000	6,000	82,000
Rev Over/(Under) Exp	5,858	8,397	-	-	8,397	358	8,755
Budgeted Staffing		1.3	-	-	1.3	-	1.3

DEPARTMENT: Public Works - Regional Parks  
 FUND: Park Snack Bars  
 BUDGET UNIT: EMO, EMP, EMT

SCHEDULE A

## DEPARTMENT RECOMMENDED FUNDED ADJUSTMENTS

Brief Description of Program Adjustment	Budgeted Staffing	Appropriation	Departmental Revenue	Revenue Over/ (Under) Exp
1. Salaries and Benefits Slight increase in salary expense due to cost of living adjustment.		2,069	-	(2,069)
2. Services and Supplies An increase in supplies are needed due to increased business at the snack bars.	-	3,500	-	(3,500)
3. Transfer Increase for EHAP charges per budget instructions.	-	73	-	(73)
4. Sales Revenue An increase in estimated revenues based on current sales and projections.	-	-	6,000	6,000
<b>Total</b>	<b>-</b>	<b>5,642</b>	<b>6,000</b>	<b>358</b>

