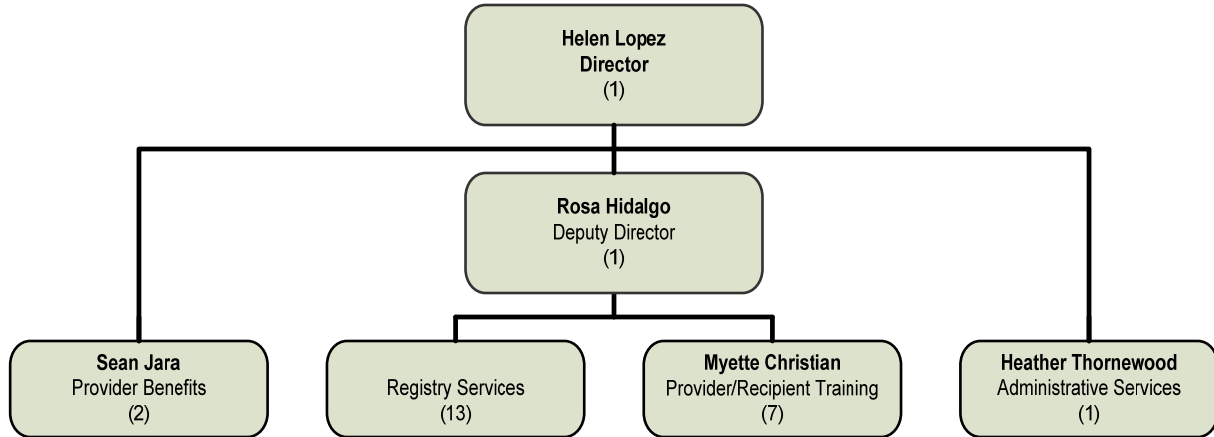


IN-HOME SUPPORTIVE SERVICES PUBLIC AUTHORITY Helen Lopez

MISSION STATEMENT

The San Bernardino County In-Home Supportive Services (IHSS) Public Authority improves the availability and quality of IHSS and eliminates barriers to providing assistance and choice for the aged and persons with disabilities who need support services to live independently and with dignity in the community.

ORGANIZATIONAL CHART



IHSS Public Authority

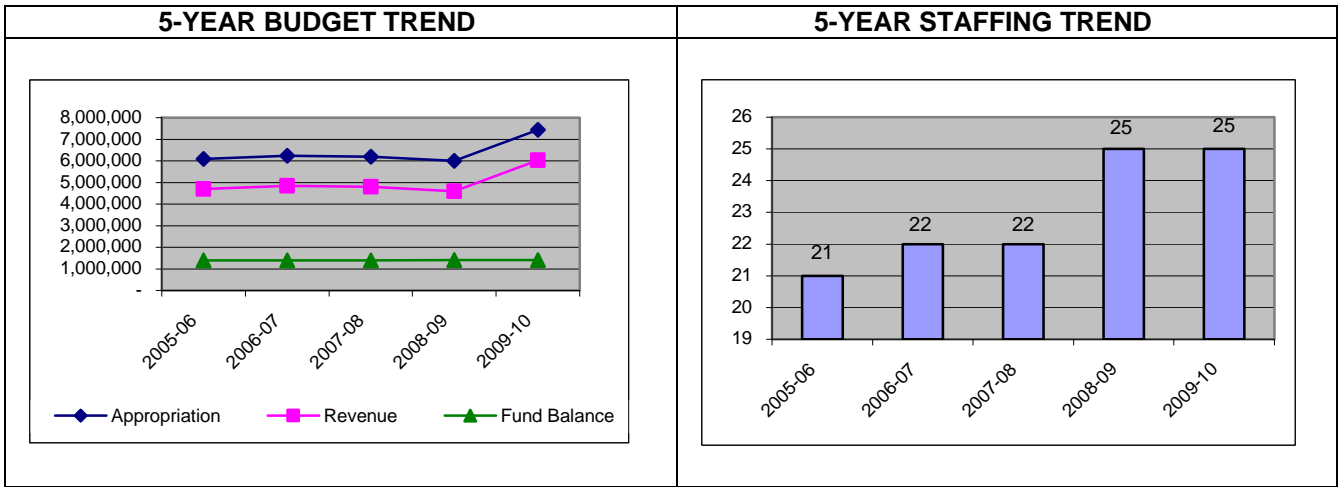
DESCRIPTION OF MAJOR SERVICES

The In-Home Supportive Services (IHSS) program was created in 1973 to serve elderly, blind, and/or disabled individuals who are not able to remain safely in their home without assistance. Section 12302.25 of the Welfare and Institutions Code (WIC) mandates that each county, on or before January 1, 2003, must act as, or establish, an employer of record for collective bargaining purposes for IHSS care providers. The IHSS Public Authority (PA) was established to comply with this mandate.

In addition to its role in collective bargaining, the IHSS PA is required by WIC to provide the following mandated services:

- Establish a registry of potential care providers.
- Investigate the background and qualifications of potential care providers.
- Refer potential care providers from the registry to IHSS consumers upon request.
- Provide training for both IHSS care providers and consumers.
- Perform other functions related to the delivery of IHSS as designated by the governing board.

BUDGET HISTORY



PERFORMANCE HISTORY

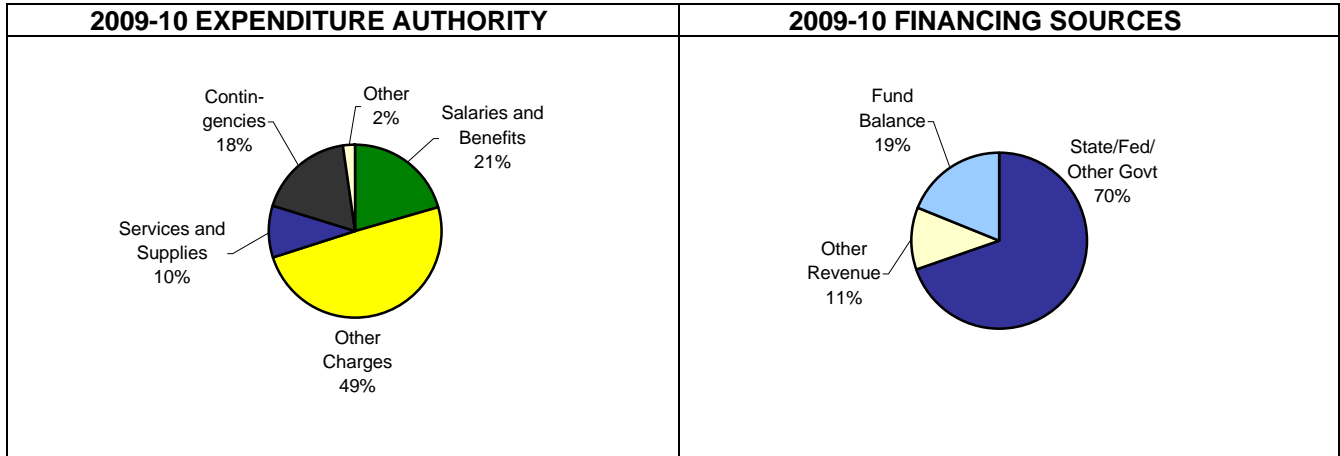
	2005-06 Actual	2006-07 Actual	2007-08 Actual	2008-09 Modified Budget	2008-09 Actual
Appropriation	5,186,464	4,846,079	3,777,663	6,000,138	3,902,644
Departmental Revenue	5,190,270	4,847,830	3,785,697	4,594,266	3,904,095
Fund Balance				1,405,872	
Budgeted Staffing				25	

Actual appropriation for 2008-09 is 774,948 less than modified budget due to the following:

- Salaries and benefits by \$127,393 due to the average vacancy rate of 14%.
- Services and supplies by \$130,251 primarily from savings in postage, printing, provider background and fingerprinting costs. Costs were budgeted for open enrollment materials, however Memorandum of Understanding (MOU) negotiations are still ongoing and open enrollment is not expected to take place until 2009-10.
- Other charges by \$455,749 due to savings in health provider benefits. The MOU for benefits and wages terminated November 30, 2009 and negotiations for a successor agreement are still ongoing. No new enrollments into health benefits can occur until a successor agreement is in place.
- Transfers by \$31,555 primarily due to reduced time spent by administrative support positions in the Department of Aging and Adult Services (DAAS) and Human Services (HS) Administration.



ANALYSIS OF FINAL BUDGET



GROUP: Other Agencies
DEPARTMENT: IHSS - Public Authority
FUND: Special Revenue

BUDGET UNIT: RHH 498
FUNCTION: Public Assistance
ACTIVITY: Other Assistance

	2005-06 Actual	2006-07 Actual	2007-08 Actual	2008-09 Actual	2008-09 Final Budget	2009-10 Final Budget	Change From 2008-09 Final Budget
Appropriation							
Salaries and Benefits	1,035,412	1,042,062	1,205,894	1,353,973	1,481,366	1,544,621	63,255
Services and Supplies	375,598	379,939	485,316	563,353	678,011	659,143	(18,868)
Central Computer	14,844	17,149	15,653	20,468	18,497	22,385	3,888
Travel	-	-	-	26,436	44,000	41,000	(3,000)
Other Charges	3,648,263	3,325,496	2,017,608	1,850,251	2,306,000	3,703,703	1,397,703
Transfers	125,674	81,433	53,192	88,163	119,718	113,516	(6,202)
Contingencies	-	-	-	-	1,352,546	1,352,546	-
Total Exp Authority	5,199,791	4,846,079	3,777,663	3,902,644	6,000,138	7,436,914	1,436,776
Reimbursements	(13,327)	-	-	-	-	-	-
Total Appropriation	5,186,464	4,846,079	3,777,663	3,902,644	6,000,138	7,436,914	1,436,776
Departmental Revenue							
Use of Money and Prop	25,910	32,615	41,835	28,303	38,000	30,000	(8,000)
State, Fed or Gov't Aid	4,165,999	3,972,285	3,260,265	3,214,610	3,758,260	5,189,214	1,430,954
Other Revenue	492	325	218	180	800	500	(300)
Total Revenue	4,192,401	4,005,225	3,302,318	3,243,093	3,797,060	5,219,714	1,422,654
Operating Transfers In	997,869	842,605	483,379	661,002	797,206	809,877	12,671
Total Financing Sources	5,190,270	4,847,830	3,785,697	3,904,095	4,594,266	6,029,591	1,435,325
				Fund Balance	1,405,872	1,407,323	1,451
				Budgeted Staffing	25	25	-

Salaries and benefits of \$1,544,621 fund 25 budgeted positions and are increasing by \$63,255 primarily from contractual cost of living adjustments in salary and benefits.

Services and supplies of \$659,143 include annual registry and provider health benefits database licensing and maintenance, provider and staff training, provider background investigations and finger printing and county overhead charges (COWCAP). The decrease of \$18,868 is primarily due to reduced printing, postage, equipment costs, provider background investigations and fingerprinting costs. IHSS Public Authority is moving to a new location in May 2009, which will result in rent savings.

Other charges of \$3,703,703 represent payments for provider health benefits. The increase of \$1,397,303 is due partially to an increase in health benefit premiums, and partially due to a temporary change in Federal Medicaid Assistance Percentage (FMAP). The effect of the FMAP change is an increase in the amount of federal dollars that are leveraged by the negotiated fixed local match of \$500,000. This increase has no impact on the cost to Social Services realignment. The MOU is currently under negotiations and open enrollment will occur once negotiations have been reached. It is expected that the number of enrollees will increase during open enrollment.



Transfers of \$113,516 represent charges for administrative support. The decrease of \$6,202 is primarily due to reduced time spent by administrative support positions in DAAS and HS Administration.

Use of money and property revenue of \$30,000 represents interest earnings on the IHSS Public Authority's cash balance throughout the year. The decrease of \$8,000 is due to a decrease in interest rates.

Federal and state revenue of \$5,189,214 represents the federal and state mandated share of IHSS Public Authority expenditures.

Operating transfers in of \$809,877 represents the county's mandated local share of IHSS Public Authority expenditures.

A final budget adjustment to reflect actual fund balance was approved by the Board of Supervisors on June 23, 2009. Based on this action, appropriation was increased by \$54,777.