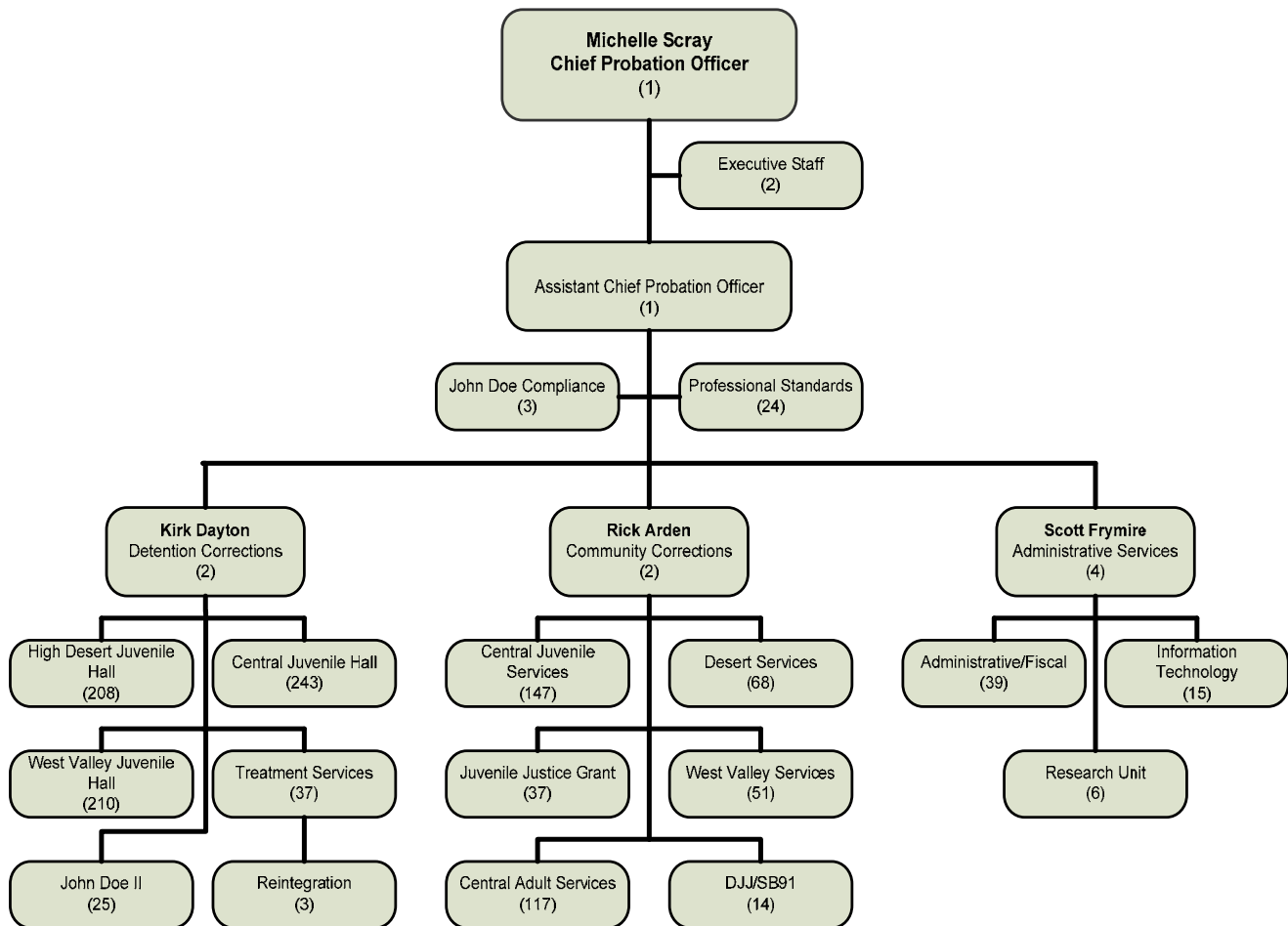


PROBATION Michelle Scray

MISSION STATEMENT

The Probation Department protects the community through assessment, treatment and control of adult and juvenile offenders by providing a range of effective services based on legal requirements and recognized professional standards.

ORGANIZATIONAL CHART



STRATEGIC GOALS

1. Ensure public safety.
2. Ensure treatment and supervision levels are based on criminogenic risk factors.



PERFORMANCE MEASURES				
Description of Performance Measure	2007-08 Actual	2008-09 Target	2008-09 Actual	2009-10 Target
Percentage of adult probationers recidivating (27,259 total adult probationers in 2008-09).	4%	5%	3%	4%
Percentage of juvenile probationers recidivating (8,263 total juvenile probationers in 2008-09).	10%	10%	9%	9%
Percentage of new adult probationers assessed with risk instrument within 60 days.	78%	80%	76%	81%
Percentage of new juvenile probationers assessed with risk instrument within 60 days.	92%	93%	96%	96%

SUMMARY OF BUDGET UNITS

	2009-10				
	Appropriation	Revenue	Local Cost	Fund Balance	Staffing
General Fund					
Admin, Corrections and Detention	115,552,672	48,038,596	67,514,076		1,222
Court-Ordered Placements	2,528,834	-	2,528,834		-
Juvenile Justice Grant Program	-	-	-		37
Total General Fund	118,081,506	48,038,596	70,042,910		1,259
Special Revenue Funds					
Juvenile Justice Grant Program Special Revenue Fund	6,561,401	5,586,338		975,063	-
Asset Forfeiture 15%	14,887	353		14,534	-
State Seized Assets	59,070	1,467		57,603	-
Total Special Revenue Funds	6,635,358	5,588,158		1,047,200	-
Total - All Funds	124,716,864	53,626,754	70,042,910	1,047,200	1,259

Detailed information for each departmental budget unit follows, along with a description of the services provided, budget unit history and analysis of the budget unit.

