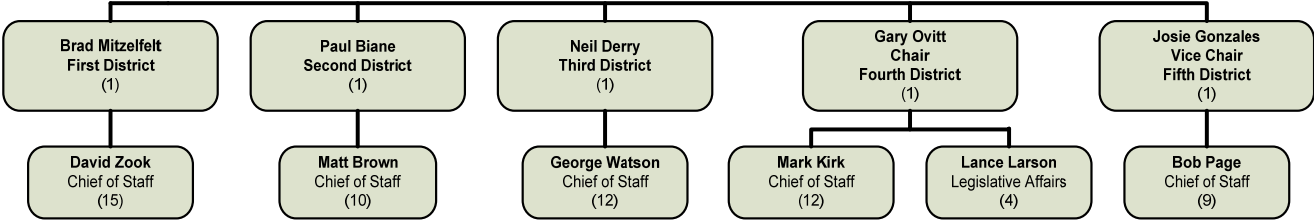


# BOARD OF SUPERVISORS

## Gary C. Ovitt, Chairman

**ORGANIZATIONAL CHART**



**SUMMARY OF BUDGET UNITS**

	<b>2009-10</b>			
	<b>Appropriation</b>	<b>Revenue</b>	<b>Local Cost</b>	<b>Staffing</b>
<b><u>General Fund</u></b>				
Board of Supervisors	7,570,572	-	7,570,572	67
Priority Policy Needs	6,519,645	-	6,519,645	-
Board Elective Funding	9,605,250	-	9,605,250	-
Total General Fund	23,695,467	-	23,695,467	67

Detailed information for each departmental budget unit follows, along with a description of the services provided, budget unit history and analysis of the budget unit.

