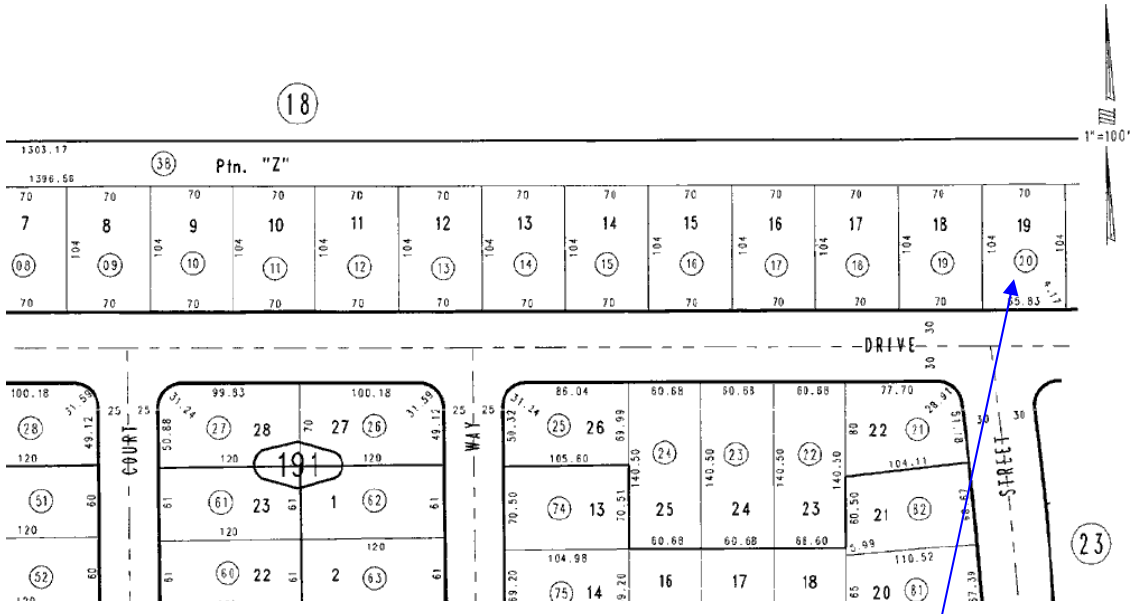


Building an APN from Parcel Map

tract'l. Sec. 3, T.1S.,R.3W. S.B.M.

City of Highland
Tax Rate Area
18001

1201 - 19



An Assessor's Parcel Number is 13 characters long (i.e., 1201-191-20-0000) and is broken down as follows:

- First 4 characters = Map Book Number
- Next 2 characters = Page Number
- Next 1 character = Block Number
- Next 2 characters = Parcel Number
- Next 4 characters = Par type & Sequence Number (When reading maps use zero's for the last 4 characters)

Building a 13 character Parcel Number from reading an Assessor's Parcel Map:

- The first two components of an Assessor's Parcel Number (APN) are the Map Book and Page Number. These are located in the top right corner of the Assessor's Parcel Map. Our example above shows 1201 as the Book and 19 as the Page Number which accounts for the first 6 digits of the APN.
- The next component added to the APN is the Block number located inside the oblong shapes of the map. It is the third digit of a three digit number. In our example **191** the number **1** is the block number. The APN is now 1201-191.
- The next component added to the APN is the two digit Parcel number located in the small circled shapes of the Assessor's Parcel Map. In our sample it is **20**. The APN number is now 1201-191-20.
- The last four characters (Par type and Sequence numbers) type in zeros. The APN is 1201-191-20-0000 a total of 13 characters.