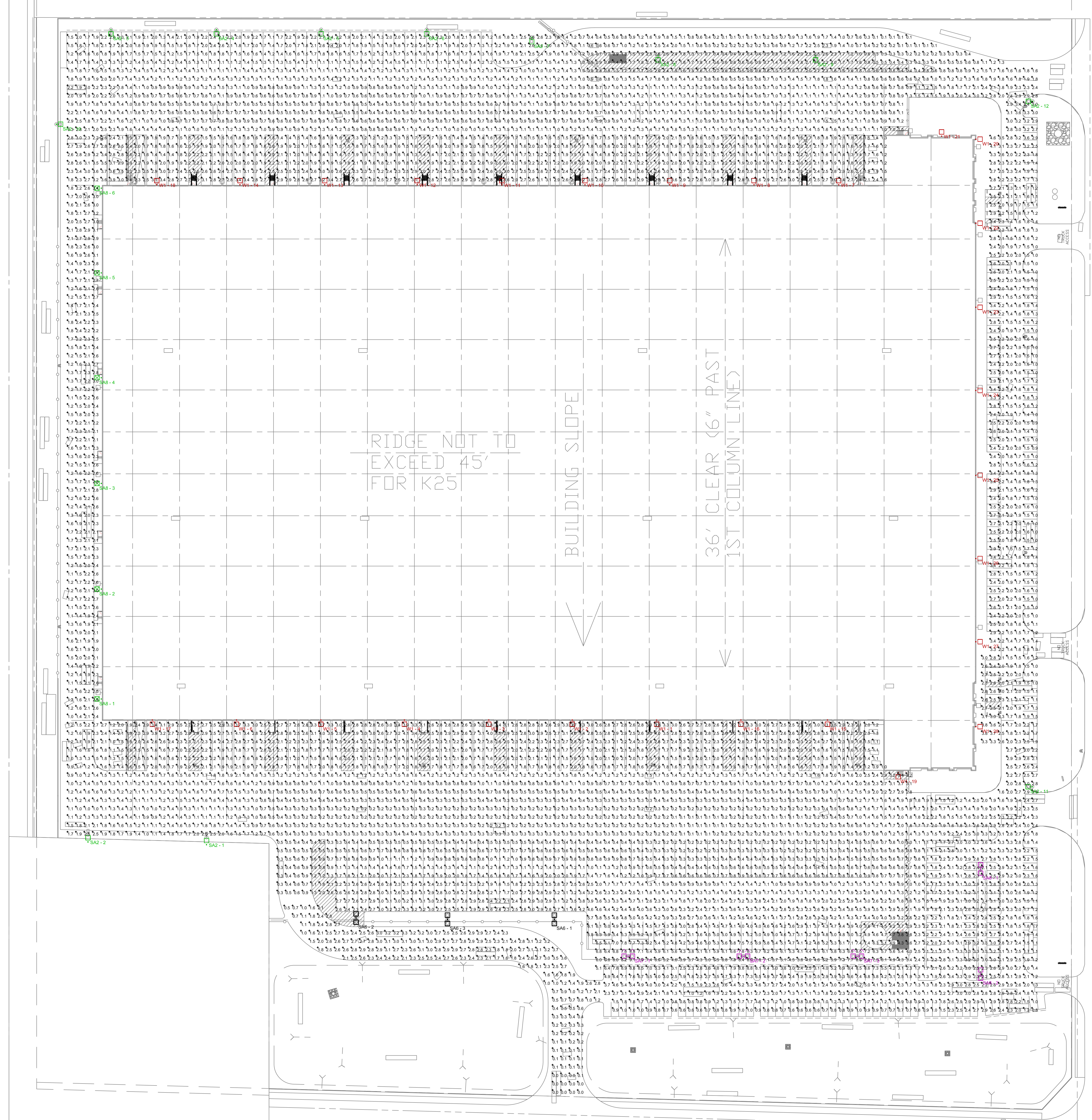


Appendix J

Lighting Plan

BLOOMINGTON INDUSTRIAL FACILITY
Draft
ENVIRONMENTAL IMPACT REPORT



Symbol	Label	Quantity	Manufacturer	Model	Description	Lamp	Number	Beam	Lumens Per Lamp	Light Loss Factor	Watts
[Symbol]	W1	28	US ARCHITECTURAL LIGHTING	SLV224-40P	4000W Pole Mt. 40 FT. 4 FT. POLE AT 30 FT. BASE	PAR 40W (Pole Mt. 40 FT.)	1	SLV224-40P-20.0	4000	0.72	440
[Symbol]	SA6	3	US ARCHITECTURAL LIGHTING	SLV224-40P	4000W Pole Mt. 40 FT. 4 FT. POLE AT 30 FT. BASE	PAR 40W (Pole Mt. 40 FT.)	1	SLV224-40P-20.0	4000	0.72	880
[Symbol]	SA2	12	US ARCHITECTURAL LIGHTING	SLV224-40P	4000W Pole Mt. 40 FT. 4 FT. POLE AT 30 FT. BASE	PAR 40W (Pole Mt. 40 FT.)	1	SLV224-40P-20.0	4000	0.72	440
[Symbol]	SA7	3	US ARCHITECTURAL LIGHTING	M-4044G	4000W Pole Mt. 40 FT. 4 FT. POLE AT 30 FT. BASE	PAR 40W (Pole Mt. 40 FT.)	1	SLV224-40P-20.0	8000	0.72	1600
[Symbol]	SA8	2	US ARCHITECTURAL LIGHTING	SLV224-40P	4000W Pole Mt. 40 FT. 4 FT. POLE AT 30 FT. BASE	PAR 40W (Pole Mt. 40 FT.)	1	SLV224-40P-20.0	4000	0.72	880
[Symbol]	SA8	6	US ARCHITECTURAL LIGHTING	SLV224-40P	4000W Pole Mt. 40 FT. 4 FT. POLE AT 30 FT. BASE	PAR 40W (Pole Mt. 40 FT.)	1	SLV224-40P-20.0	4000	0.72	440

Quantity	Symbol	Avg	Max	Min	Max/W	Agg/W	Agg/W
Calc. Zone #2	+	1.8%	0.1%	0.1%	91.0%	18.0%	0.2%
Calc. Zone #2	+	1.8%	0.1%	0.1%	91.0%	18.0%	0.2%

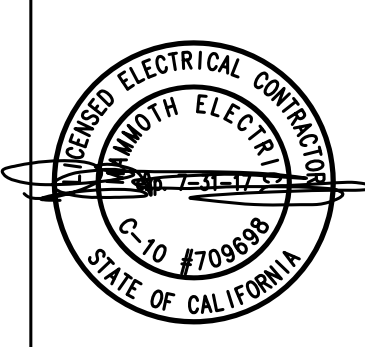
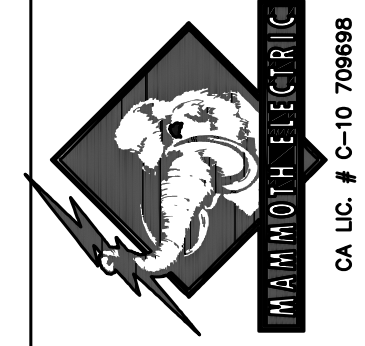
SITE PHOTOMETRIC PLAN
SCALE: 1" = 50'-0"

DESIGN/BUILD NOTES:

- THESE DRAWINGS AND SPECIFICATIONS ARE PART OF A PRESENTATION FOR A PROPOSED CONTRACT AND ARE THE PROPERTY OF AND COPYRIGHT BY MAMMOTH ELECTRIC. THESE PLANS SHALL NOT BE USED, IN WHOLE OR IN PART, BY ANY OTHER THAN MAMMOTH ELECTRIC. THESE PLANS REPRESENT A SCHEMATIC DESIGN/BUILD LAYOUT OF THE ELECTRICAL SYSTEM(S). THESE PLANS MAY NOT INDICATE ALL MATERIALS THAT WILL BE REQUIRED TO PROVIDE A COMPLETE AND OPERATING ELECTRICAL SYSTEM(S).
- THESE PLANS WERE PREPARED UNDER THE EMPLOYMENT TO DIVISION 3 OF THE CALIFORNIA BUSINESS AND PROFESSIONS CODE BY SECTION 55372. AS THE LICENSED CONTRACTOR RESPONSIBLE FOR THE PREPARATION OF THESE DRAWINGS, ONLY MAMMOTH ELECTRIC MAY UTILIZE THEM.

BASTIEN AND ASSOCIATES, INC.
ARCHITECTURE AND PLANNING
15661 RED HILL AVENUE, SUITE 150
TUSTIN, CALIFORNIA 92780
(714) 617-8600 FAX: (714) 617-8671

CONSULTANT:
MAMMOTH ELECTRIC, INC.
170 E LIBERTY AVENUE
ANAHEIM, CALIFORNIA 92801
T 714.446.8880
F 714.446.8811
WWW.MAMMOTHELECTRIC.COM



WESTERN REALCO
CEDAR AVENUE
BLOOMINGTON, CALIFORNIA

SITE PHOTOMETRIC

JOB NO:
DATE: 08/10/16
DRAWN: F.R.
FILENAME:
PLOTSCALE:
E-1