

# San Bernardino County Essential Facilities Risk Assessment (SBEFRA) Project

## Second Community Executive Committee (CEC) Meeting

July 23, 2008



FEMA MAP IX-Mainland



ABS Consulting

## Introductions

- Community Executive Committee
- FEMA Region IX
- Project Team
- Guests



FEMA

2

## Meeting Agenda & Objectives

- Data Collection Status Update
- Earthquake Hazards
- Earthquake Scenario Selection
- Flood Hazards
- Next Steps
- Open Discussion



FEMA

3

## Project Overview

- Effort guided by a Community Executive Committee led by San Bernardino County
- Essential Facilities Data Collection and HAZUS Incorporation
- Incorporation of County Assessor's data
- Earthquake Hazard Scenario Selection (2) and Risk Assessment
- Incorporation of DFIRM data into HAZUS
- Flood Risk Assessment (Two 100 yr events, w/ & w/out levees & one 500 yr event)
- Risk Assessment Report
- One year schedule



FEMA

4

## Project Phases

- 4 Phases:
  - 1 – Initial Coordination, Establishment of Community Exec. Committee, Identify points of contact
  - 2 - Data Collection & Review (\*CEC meeting upon completion)
  - 3 - HAZUS Analyses - EQ & Flood (\*CEC meeting upon completion)
  - 4 - Risk Assessment Report (\*Community Roll-Out upon completion)



FEMA

5

## SBEFRA Data Collection Status



FEMA

6

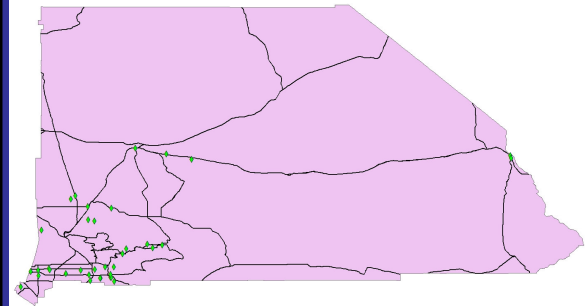
## Inventory Data

- Essential Facilities inventory data is stored two ways:
  - Data common to all hazards
    - Address
    - Geographic Location
    - Contact Info, etc.
  - Hazard-specific data
    - EQ – model building type, quality, design level, site-specific EQ hazard data
    - Flood – Pre-FIRM/Post-FIRM, foundation type, first floor elevation, flood protection



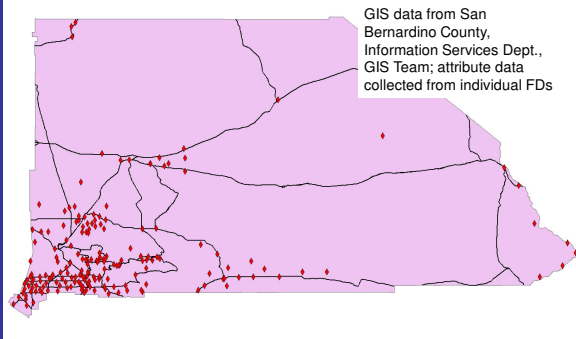
7

## HAZUS Default data for Fire Facilities



8

## SBEFRA Fire Facilities



9

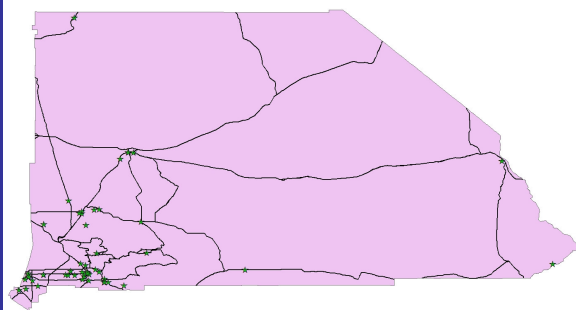
## Fire Departments That Provided Data

- San Bernardino County Fire
- Apple Valley FD
- Barstow Fire Protection District
- Big Bear City CSD
- Big Bear Lake FD
- Chino Valley Independent Fire District
- Colton FD
- Highland FD
- Montclair FD
- Ontario FD
- Rancho Cucamonga FD
- Redlands FD
- Rialto FD
- Running Springs FD
- San Bernardino FD
- Upland FD
- Victorville FD
- Crest Forest Fire
- *In process: Loma Linda, Morongo Valley, Twentynine Palms*



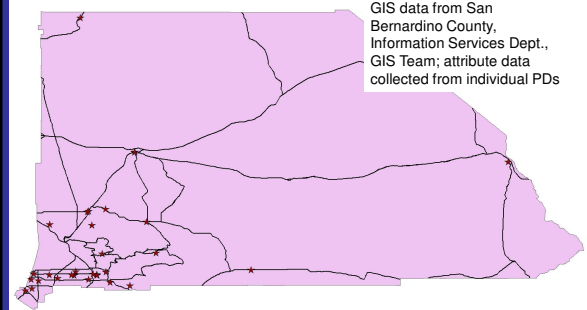
10

## HAZUS Default Data for Police Facilities



11

## SBEFRA Police Facilities



12

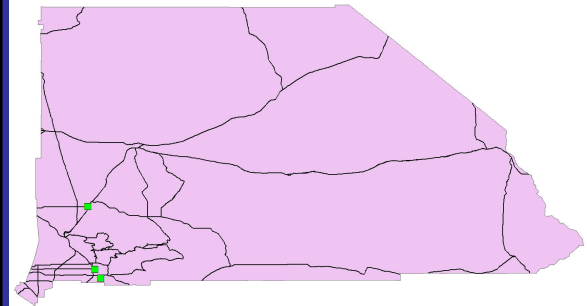
## Jurisdictions That Provided Police Facility Data

- Barstow PD
- Chino PD
- Colton PD
- Fontana PD
- Montclair PD
- Ontario PD
- Redlands PD
- San Bernardino PD
- Upland PD
- *In Process: San Bernardino County Sheriff, Rialto PD*



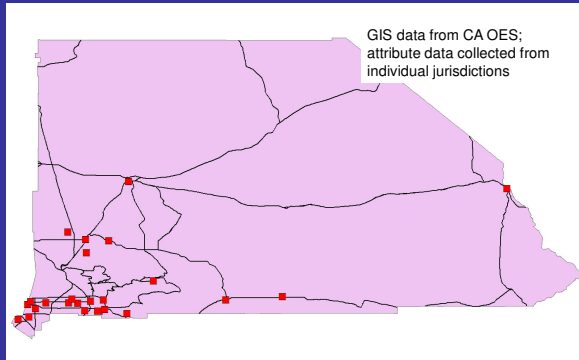
13

## HAZUS Default Data for EOCs



14

## SBEFRA EOCs



15

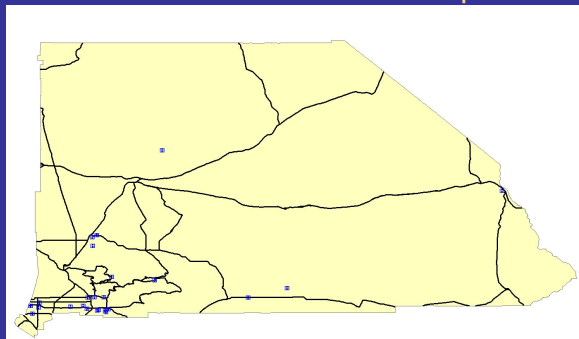
## Jurisdictions That Provided EOC Data

- Adelanto
- Apple Valley
- Barstow
- Big Bear City
- Big Bear Lake
- Chino
- Chino Hills
- Colton
- Fontana
- Grand Terrace
- Montclair
- Needles
- Rancho Cucamonga
- Redlands
- Rialto
- San Bernardino City
- San Bernardino County
- Twentynine Palms
- Upland
- Yucaipa
- Yucca Valley
- *In process: Hesperia, Loma Linda, Victorville*
- *Requested: Highland, Ontario*



16

## HAZUS Default data for Hospitals



17

## Requested Hospital Data

Hospital Site Data	Hospital Building Data
Hospital Name	Building Name
OSHPD Facility number	SPC rating as reported to/by OSHPD
Street Address	Year Built
Number of Buildings	Number of Stories
Number of licensed (acute care) beds	Structural System/Construction Type
	Building Area (square footage)
	Replacement cost
	Back-up Power
	Foundation Type
	First Floor Elevation
	Flood protection



18

## Hospitals That Have Provided Detailed Building Data

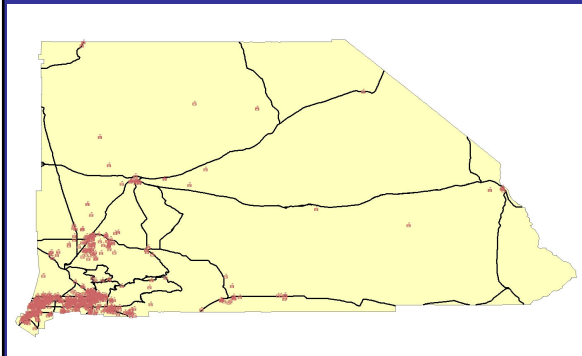
- Arrowhead Regional Medical Center
- Canyon Ridge Hospital
- Desert Valley Hospital
- Kaiser Permanente-Fontana (partial)
- Kindred Hospital-Ontario
- Mountains Community Hospital
- San Antonio Community Hospital
- Jerry L. Pettis Veterans Affairs Medical Center
- Chino Valley Medical Center

→ Total # licensed beds = 1,500 (28.5% of County)  
 FEMA



19

## HAZUS Default data for Schools



20

## School Data Collection

- Data required for HAZUS generally available within school insurance appraisal reports, including:
  - School district, School name, School location
  - Building name
  - Basic construction class (including portables)
  - Year Built
  - Number of stories
  - Building square footage/floor area
  - Presence of basement
  - Building & content replacement value



FEMA

21

## San Bernardino Co. School Districts

Property Insurance Provider	School Districts	Data collection status
Alliance of Schools for Cooperative Insurance Programs (ASCIP) – 3	Chaffey, Colton, Upland	Data provided by ASCIP
Southern California Schools Risk Management Joint Powers Authority (SCSRM JPA) – 30	Adelanto, Alta Loma, Apple Valley, Baker Valley, Baldy View ROP, Barstow, Barstow CC, Bear Valley, Central, Chaffey CC, Chino Valley, Colton-Redlands-Yucaipa ROP, Copper Mountain CC, Cucamonga, Etiwanda, Helendale, Hesperia, Lucerne Valley, Morongo, Mountain View, Mt. Baldy, Needles, Ontario-Montclair, Oro Grande, Rim of the World, San Bernardino City, San Bernardino Co. SoS, Silver Valley, Victor, Yucaipa-Calimesa	Data provided by SCSRM JPA (>6,000 buildings)
Others – 4	Fontana, Redlands, Rialto, Victor Valley	Data requested
Others – 1	Trona	Contact pending



22

## Seismic Hazards Impacting San Bernardino County

Dr. Sally McGill  
 California State University, San Bernardino  
 Dept. of Geological Sciences



FEMA

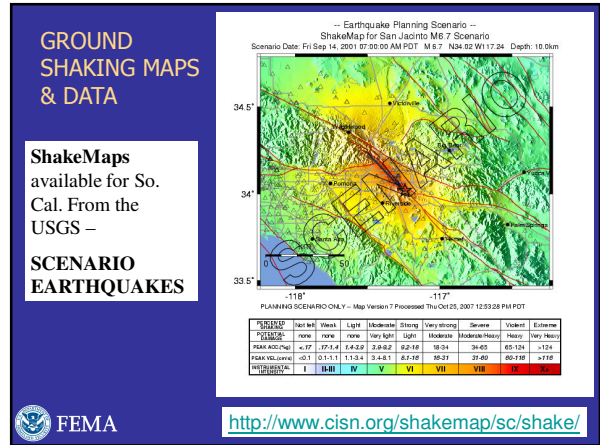
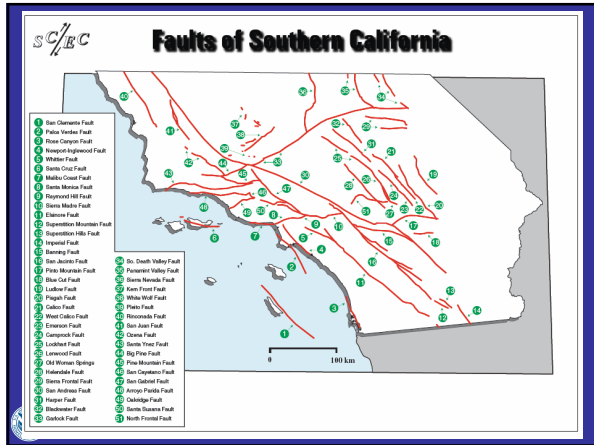
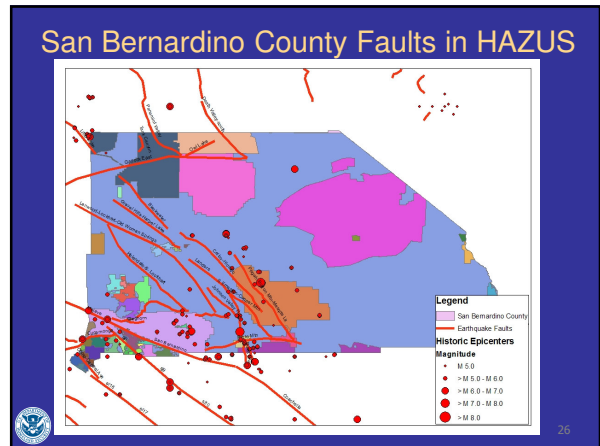
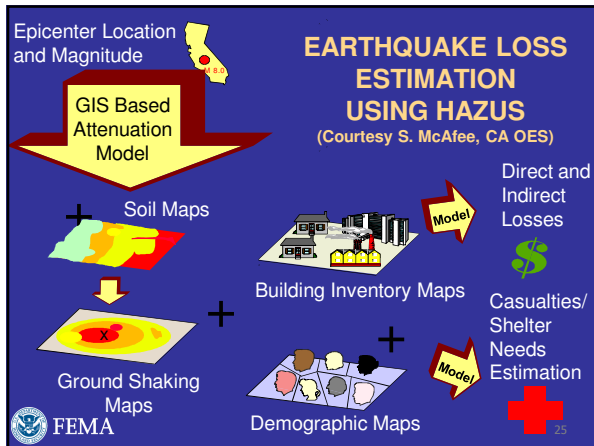
23

## Earthquake Scenario Selection



FEMA

24

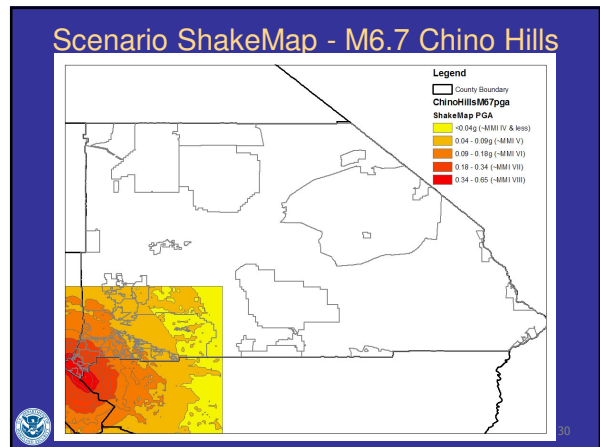


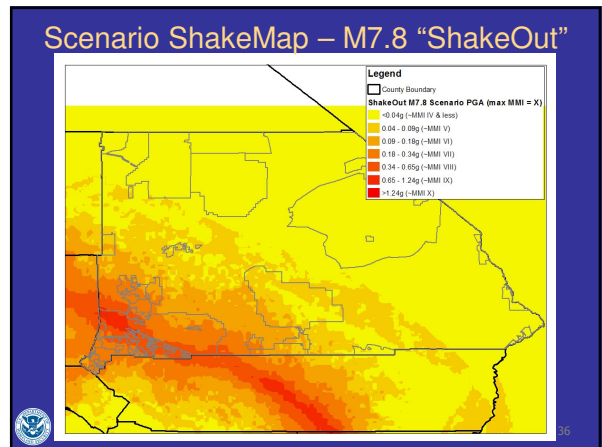
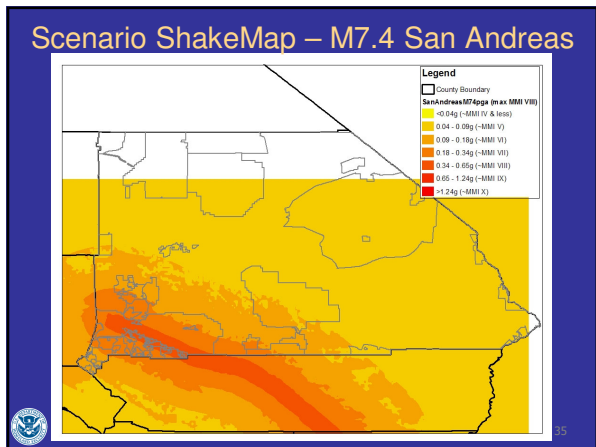
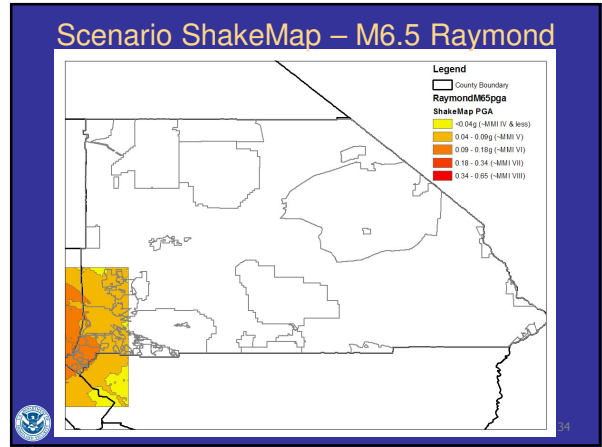
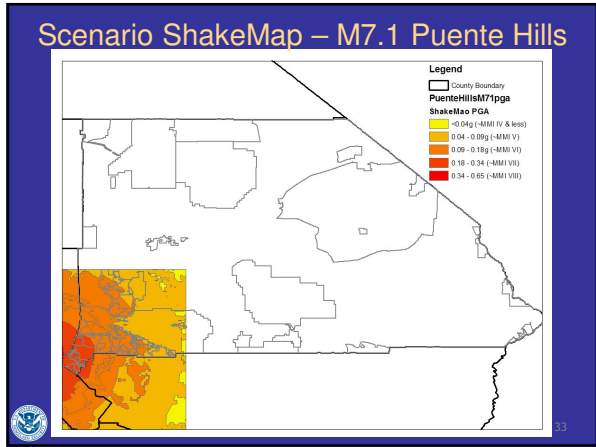
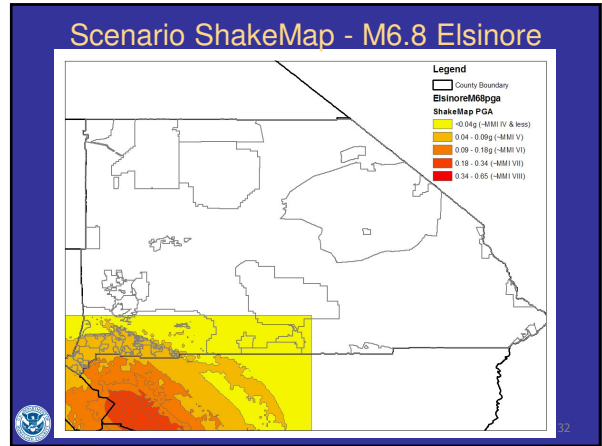
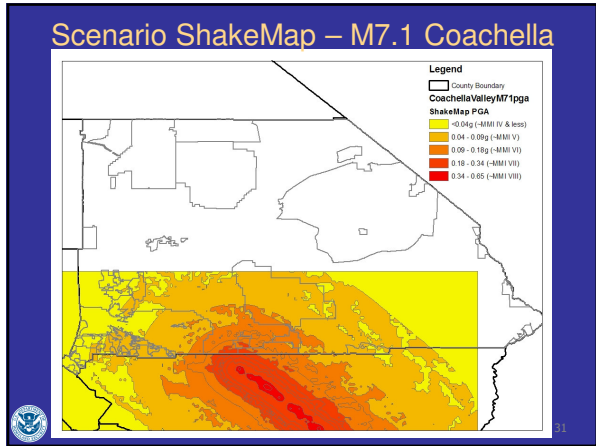
### Shaking & Potential Damage

Intensity	Acceleration (%g)	Perceived Shaking	Potential Damage
I	< 0.2	Not Felt	None
II-III	0.2 - 1.5	Weak	None
IV	1.5 - 4	Light	None
V	4 - 9	Moderate	Very Light
VI	9 - 18	Strong	Light
VII	18 - 34	Very Strong	Moderate
VIII	34 - 65	Severe	Mod. to Heavy
IX	65 - 124	Violent	Heavy
X+	> 124	Extreme	Very Heavy

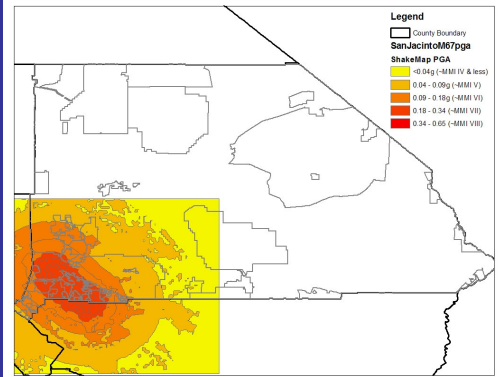
Adapted from <http://pasadena.wr.usgs.gov/shake/pubs/shake/shake.html>

FEMA



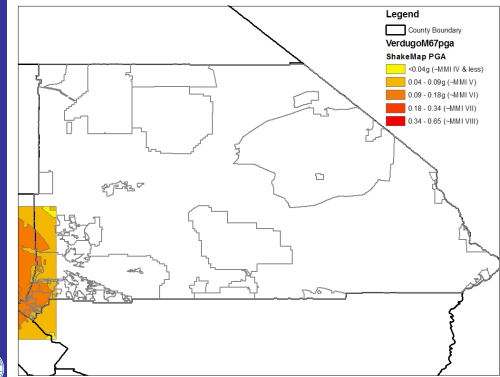


### Scenario ShakeMap – M6.7 San Jacinto



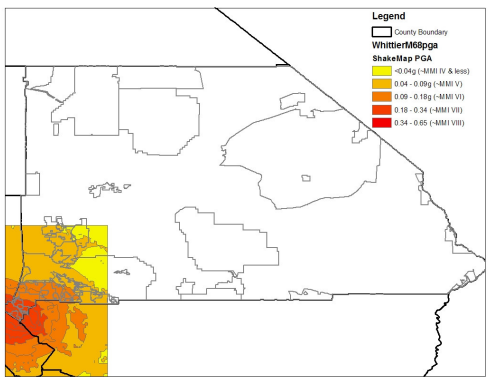
37

### Scenario ShakeMap - M6.7 Verdugo



38

### Scenario ShakeMap – M6.8 Whittier



39

### Scenario Selection Discussion

- Need to select 2 earthquake scenarios for inclusion in the risk assessment...



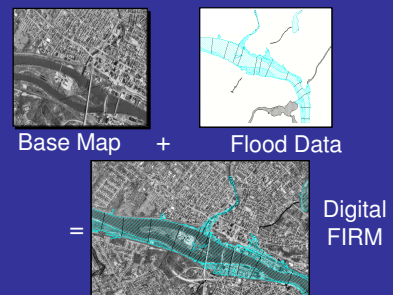
40

### Flood Hazards



41

### Digital FIRM



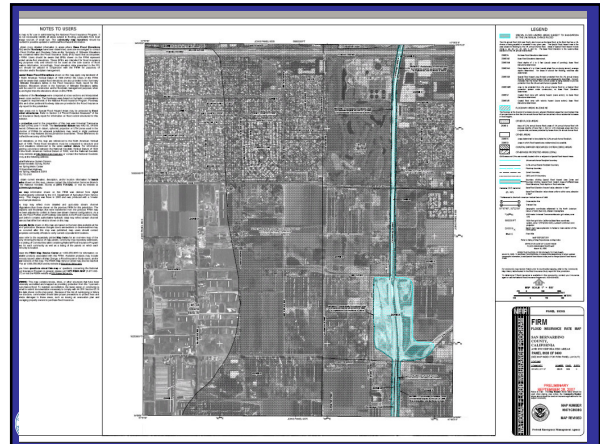
42

## Flood Hazard Data

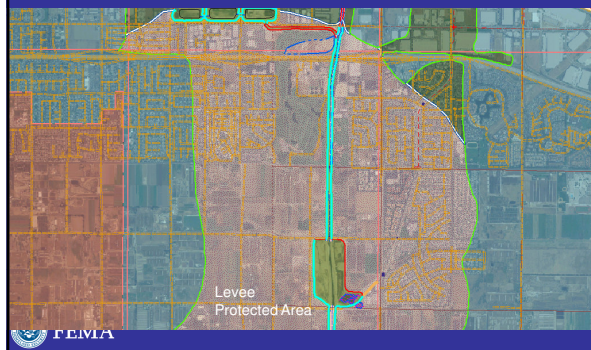
- DFIRM effective 08/28/2008
- 26 streams with levee systems in the county that are in the process of accreditation. Some of these are:
  - Santa Ana River
  - Mojave River
  - Mill Creek
  - Lytle Creek
  - Etiwanda and San Sevaine Channel
  - East Twin Creek
  - Cucamonga Creek
  - City Creek
  - Twenty-nine Palms Creek
  - Cajon Wash
  - Cable Creek Channel



43



## Part of the levee system for Cucamonga Creek



## HAZUS Flood Scenarios

- Scenarios
  - 1 % Annual Chance Event – With Levees
  - 1 % Annual Chance Event – Without Levees
  - 0.2 % Annual Chance Event
- Requires DFIRM & FIS data to generate a Surface Water Elevation Depth of Flooding Grid for each scenario type
- Requires Terrain Surface



46

## HAZUS Depth Grid Methodology

- Challenges
  - BFEs below ground with USGS topo
  - Shaded X 500 year is really 198 year event and not split on map from X < 1 ft and X protected by levee
  - 500 year really not shown on map but in profiles
  - Zone D areas need to be estimated



47

## HAZUS Depth Grids

- With Levee Scenario Depth Grid
  - Zones AE, AH, VE DFIRM data and FIS profiles for areas with BFE need correct topo
  - Zone AO - Use depth
  - Zone A & V – Coordinate with community for standard depth or LDS of available with BFEs
  - Exclude Zone D, X, Shaded X



48



## HAZUS Depth Grids

- Without Levee Scenario Depth Grid
  - Cannot assume a single depth for Levee Fail areas (e.g. treat like a Zone A)
  - Use results from PM 34 /43 analysis to get boundary for WSEL elevation
  - Create WSEL elevation by running back to Profile baseline & interpolate in Zone D areas
  - Subtract from terrain corrected in With Levee Scenario
  - Confirm with previous FIRM that showed Levee Fail areas



49

## HAZUS Depth Grids

- 0.2% Scenario Depth Grid
  - Cannot use shaded X from DFIRM data
  - USACE and Community may have performed some limited area restudy for 500 year
  - Majority of Profiles show 500 year depth
  - Going to run this depth out to terrain to get extent of boundary at that WSEL
  - Subtract surface from terrain to get Depth Grid



50

## HAZUS Depth Grids

- Validation
  - FEMA, USACE, and Community review of all three Depth Grids
  - Spot check against depths shown in profiles from FIS
  - Compare against existing 500 year studies
  - CEC buy-in



51

## Next Steps ...

- Data processing for all essential facilities
- Data processing of Assessor's data
- Earthquake risk assessment
- DFIRM development → Flood hazard data processing
- Flood risk assessment
- Next meeting – to discuss preliminary EQ & Flood risk assessment results...



52

## Current & Future Use of HAZUS & SBEFRA Data

- CEC to determine central SBEFRA Project HAZUS data storage repository
- CEC to agree on data distribution policy & associated limitations
- Who is using/will use HAZUS?
- How will HAZUS be used?



53

## Questions & Discussion

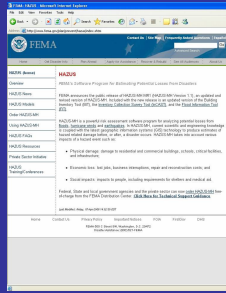
- FEMA is excited to work with San Bernardino County on this important project, to blaze a new trail in emergency preparedness and risk assessment!
- This project has unlimited potential for future applications...this project is for you...
- Questions?



54

## FEMA Resources

- HAZUS-MH Overview
- Resources
- Conference Information
- FAQs



<http://www.fema.gov/plan/prevent/haus/index.shtm>



55

## Contact Information

### FEMA Region IX

**Raymond T. Lenaburg**  
**Chief, Risk Analysis Branch**  
**(510) 627-7181**  
**Raymond.Lenaburg@dhs.gov**

**MAP-IX Mainland-Dewberry**  
**Stephanie Routh, CFM**  
**Project Manager**  
**(602) 943-1585 x110**  
**srouth@dewberry.com**

**MMI Engineering Inc.**  
**Hope Selligson, Associate**  
**(714) 465-1390**  
**HSelligson@mengineering.com**

**ABS Consulting**  
**David Montague, Exec. VP**  
**(714) 734-4242**  
**DMontague@absconsulting.com**

### San Bernardino County

**Denise Benson, Division Manager**  
**San Bernardino County Fire**  
**Department**  
**Office of Emergency Services**  
**(909) 356-3998**  
**dbenson@sbcfire.org**

For project documents, etc.  
[www.sbcfire.org/oes/index.asp](http://www.sbcfire.org/oes/index.asp)



56