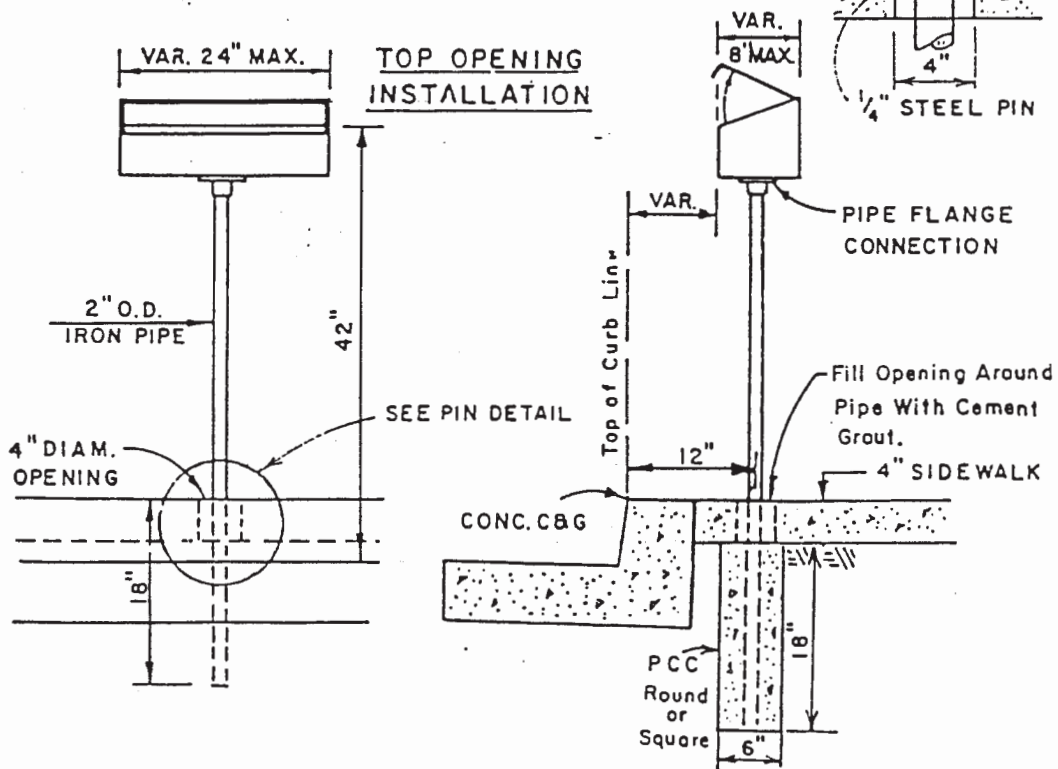


NOTE: END OPENING MAILBOX NOT PERMITTED.
FACE OF MAILBOX SHALL NOT EXTEND
PAST TOP OF CURB LINE.



SAN BERNARDINO COUNTY ROAD DEPARTMENT

DATE:
12.08.89

Ken A. Miller
DIRECTOR OF TRANSPORTATION

SINGLE MAILBOX
INSTALLATION

312