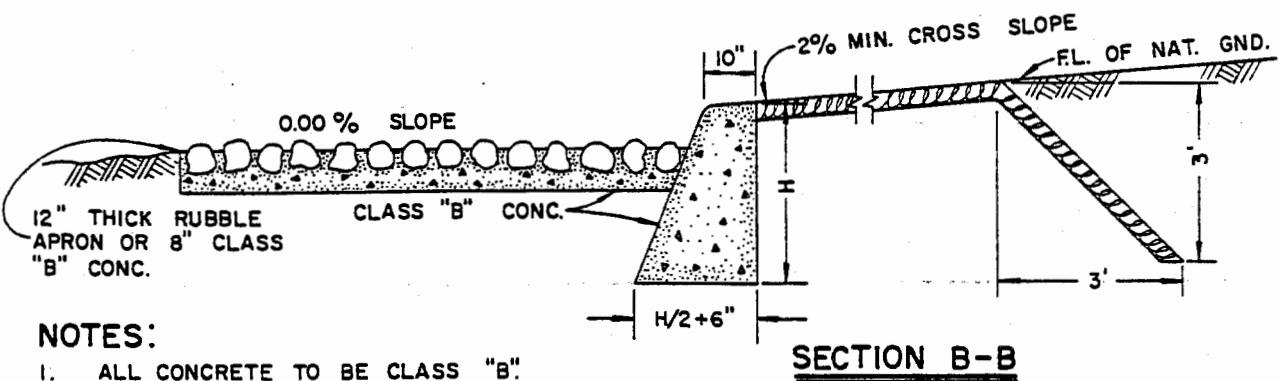
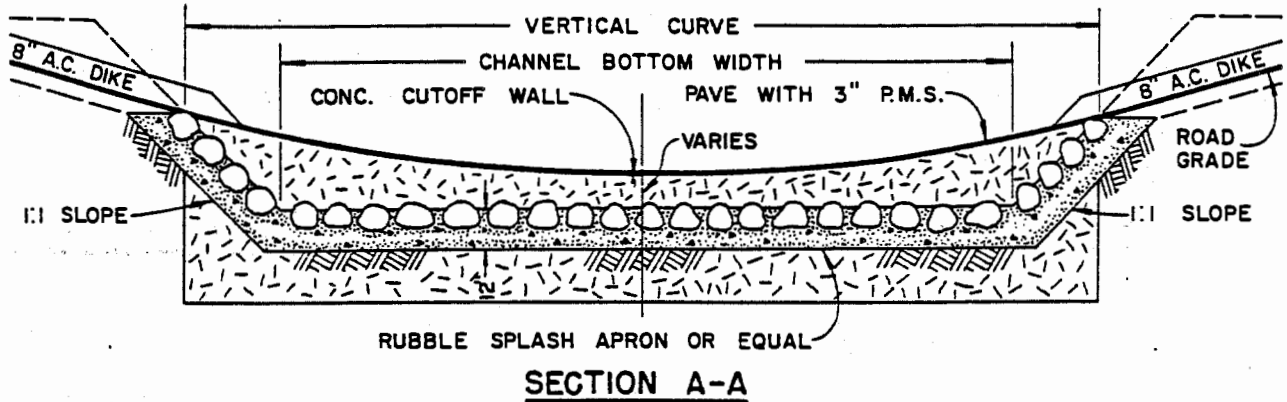
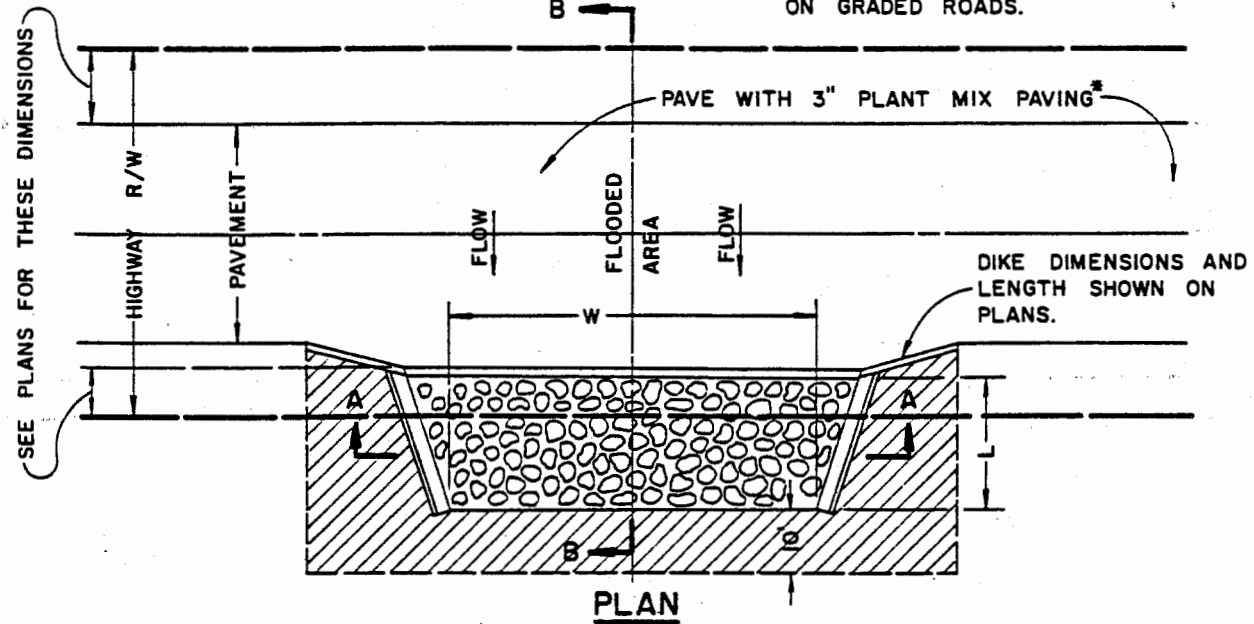


\*NOTE: 12" OF AGGREGATE BASE REQUIRED ON GRADED ROADS.



- NOTES:**
1. ALL CONCRETE TO BE CLASS "B".
  2. L = SHOWN ON PLANS, H = 3' MIN., 6' MAX.
  3. DRAINAGE EASEMENT REQUIRED.
  4. AREA SHOWN THUS SHALL BE COMPACTED TO 90% RELATIVE DENSITY PER STANDARD SPECIFICATION 3.04.03.
  5. REINFORCED BLOCK WALL AND FOOTING PERMITTED.

SAN BERNARDINO COUNTY ROAD DEPARTMENT

DATE: J.E.M. 7-66

M. A. Nicholas  
COUNTY ENGINEER

CUTOFF WALL FOR  
DRAINAGE CHANNEL

200