

GENERAL NOTES:

1. LOCATION OF ALL EXISTING ITEMS ARE APPROXIMATE AND MUST BE VERIFIED IN THE FIELD PRIOR TO CONSTRUCTION.
2. GRADING CONTOURS, ROADS AND EASEMENTS SHOWN FOR REFERENCE ONLY. SEE CIVIL DRAWINGS.
3. REFER TO SHEETS E0.0.0 AND E0.0.1 FOR GENERAL ELECTRICAL NOTES, ABBREVIATIONS, NAMING CONVENTIONS, AND SYMBOLS.

SHEET NOTES:

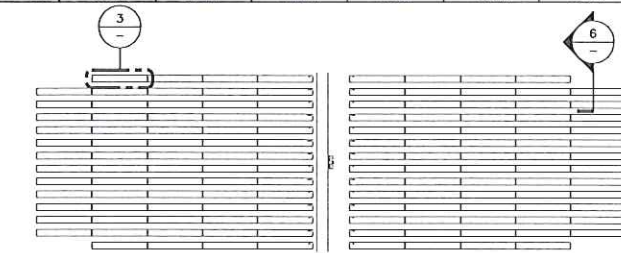
- (1) REFERENCE CELL, (3) RTDS, AND (1) ELECTRICAL ENCLOSURE.

SOLAR SUMMARY:

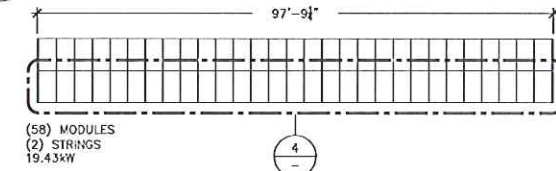
FV INVERTER: 1MVA GE LV5 1500Vdc UL (FURNISHED BY OTHERS)
 FV MODULE: QCELLS Q.PLUS L-G4.2 335W 1500Vdc UL (FURNISHED BY OTHERS)

	POWER BLOCK 01	POWER BLOCK 02	POWER BLOCK 03	POWER BLOCK 04	POWER BLOCK 05	POWER BLOCK 06
INVERTER COUNT	2	2	2	2	2	2
MODULE COUNT	7888	7250	7888	7888	7888	7888
MODULE W DC	335	335	335	335	335	335
STRING COUNT	272	250	272	272	272	272
MOUNTING SYSTEM	FIXED TILT	FIXED TILT	FIXED TILT	FIXED TILT	FIXED TILT	FIXED TILT
RACK COUNT	136	125	136	136	136	136
TILT*	25°	25°	25°	25°	25°	25°
AZIMUTH	180°	180°	180°	180°	180°	180°
MW DC STC	2.64	2.43	2.64	2.64	2.64	2.64
MW AC	1.818	1.818	1.818	1.818	1.818	1.818
MVA AC	2	2	2	2	2	2
DC/AC RATIO	1.454	1.335	1.454	1.454	1.454	1.454
GCR	53.09%	53.09%	53.09%	53.09%	53.09%	53.09%

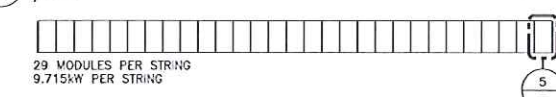
	POWER BLOCK 07	POWER BLOCK 08	POWER BLOCK 09	POWER BLOCK 10	POWER BLOCK 11	SYSTEM TOTAL
INVERTER COUNT	2	2	2	2	2	22
MODULE COUNT	7888	7888	7888	7888	7888	86130
MODULE W DC	335	335	335	335	335	335
STRING COUNT	272	272	272	272	272	2970
MOUNTING SYSTEM	FIXED TILT	FIXED TILT	FIXED TILT	FIXED TILT	FIXED TILT	FIXED TILT
RACK COUNT	136	136	136	136	136	1455
TILT*	25°	25°	25°	25°	25°	25°
AZIMUTH	180°	180°	180°	180°	180°	180°
MW DC STC	2.64	2.64	2.64	2.64	2.64	28.85
MW AC	1.818	1.818	1.818	1.818	1.818	19.958
MVA AC	2	2	2	2	2	22.0
DC/AC RATIO	1.454	1.454	1.454	1.454	1.454	1.443
GCR	53.09%	53.09%	53.09%	53.09%	53.09%	53.09%



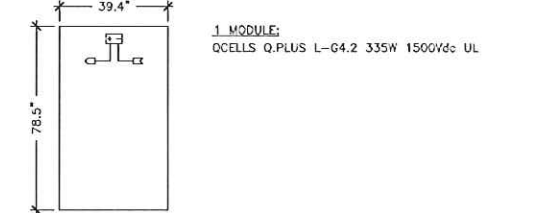
2 TYPICAL POWER BLOCK
 1"=150'



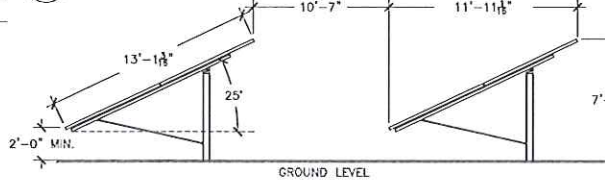
3 TYPICAL SYSTEM RACK
 1/16"=1'



4 TYPICAL SYSTEM STRING
 1/16"=1'



5 TYPICAL SYSTEM MODULE
 NTS



6 RACK ELEVATION
 NTS

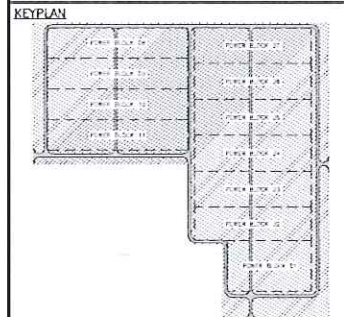


THESE DRAWINGS AND SPECIFICATIONS HAVE BEEN PREPARED BY CUPERTINO ELECTRIC, INC. FOR THEIR EXCLUSIVE USE IN ACCORD WITH SEC. 6737.3 OF THE 2015 PROFESSIONAL ENGINEERS ACT OF THE STATE OF CALIFORNIA.



PRELIMINARY

NOTE: PRELIMINARY DRAWINGS SHALL BE USED FOR REFERENCE ONLY.



PROJECT TITLE

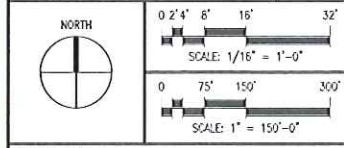
JOSHUA TREE SOLAR PV

PROJECT SITE

5500 SUNFAIR ROAD
 JOSHUA TREE,
 SAN BERNARDINO
 COUNTY, CA 92252

JOB NO. 15-9519
 DRAWN BY: JWW
 CHECKED BY: GC

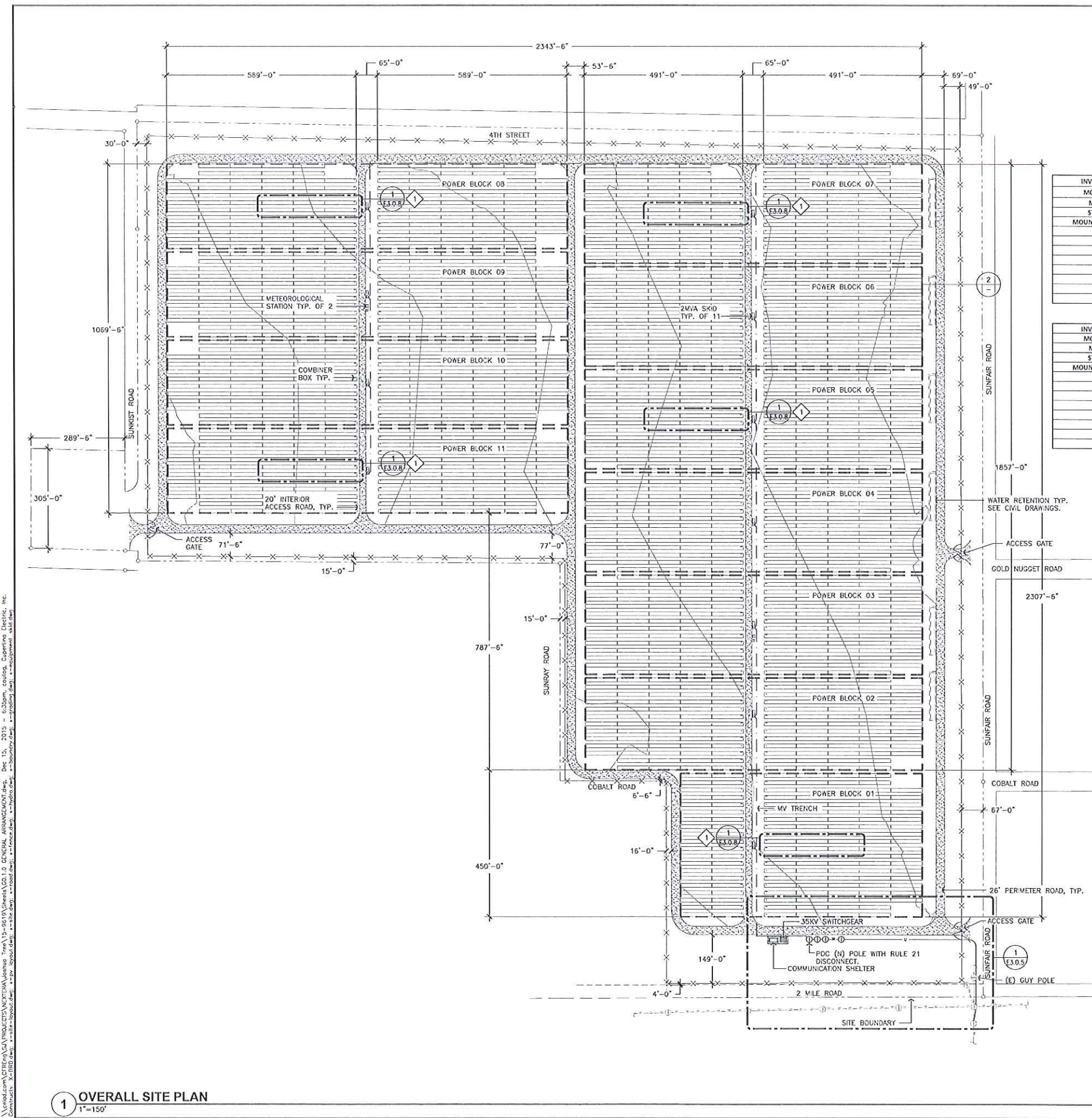
REV.	DESCRIPTION	DATE
	30% ISSUE FOR OWNER	10/15/15
	60% ISSUE FOR OWNER	11/13/15
	90% ISSUE FOR OWNER	12/15/15



SHEET TITLE

GENERAL ARRANGEMENT

SHEET NUMBER G0.1.0



1 OVERALL SITE PLAN
 1"=150'

\cadd\cadd\CUPERTINO ELECTRIC\PROJECTS\JOSHUA TREE\15-9519\G0.1.0 GENERAL ARRANGEMENT.dwg, Date: 12/15/2015, 6:32pm, cadd\Cupertino Electric, Inc.
 Drawn by: JWW, Checked by: GC, Title: GENERAL ARRANGEMENT, Project: JOSHUA TREE SOLAR PV, Job No: 15-9519, Scale: 1"=150'-0", Plot Date: 12/15/2015, 6:32pm, Plot User: JWW, Plot Device: HP DesignJet T1100e, Plot Size: 36x48, Plot Orientation: Landscape, Plot Scale: 1"=150'-0", Plot Title: GENERAL ARRANGEMENT, Plot Sheet: G0.1.0, Plot Path: \\cadd\CUPERTINO ELECTRIC\PROJECTS\JOSHUA TREE\15-9519\G0.1.0 GENERAL ARRANGEMENT.dwg, Plot Size: 36x48, Plot Orientation: Landscape, Plot Scale: 1"=150'-0", Plot Title: GENERAL ARRANGEMENT, Plot Sheet: G0.1.0, Plot Path: \\cadd\CUPERTINO ELECTRIC\PROJECTS\JOSHUA TREE\15-9519\G0.1.0 GENERAL ARRANGEMENT.dwg