

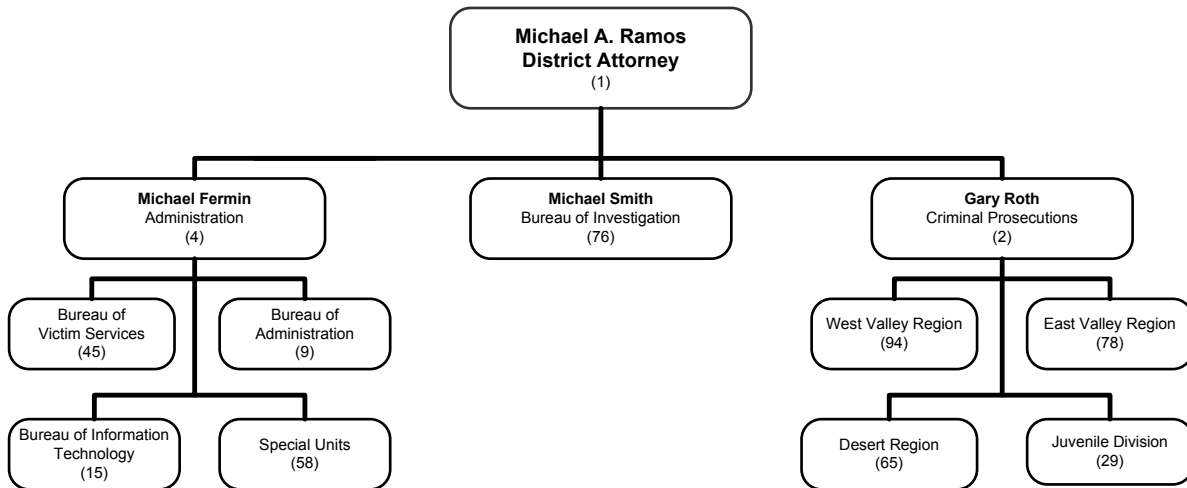
DISTRICT ATTORNEY Michael A. Ramos

MISSION STATEMENT

The San Bernardino County District Attorney's Office represents the interests of the people in the criminal justice system, as mandated by California State law. The San Bernardino County District Attorney's Office serves the residents of San Bernardino County by: seeking the truth; protecting the innocent; holding the guilty accountable; preserving the dignity of victims and their families; and ensuring that justice is done while always maintaining the highest ethical standards.



ORGANIZATIONAL CHART



2010-11 AND 2011-12 ACCOMPLISHMENTS

- The Department continues to be a state leader in gang prosecution.
- Restitution ordered for victims of crime in the amount of \$2.1 million.
- The Department's per capita prison commitment rate continues to be the highest in the state.
- Creation of GRIP – Gang Reduction Intervention Program. This program is a partnership with Rialto Police Department and the Rialto School District to educate grade school students on the dangers of gangs.
- Continuation of the Parent Project with San Bernardino City Schools. The Parent Project utilizes an evidence-based curriculum to provide parents with the skills to raise their children. The Parent Project has shown to be effective in dramatically reducing calls for service by police when parents complete the course.
- Formation of ACT – Animal Cruelty Task Force, a multi-disciplinary collaboration designed to promote community awareness, education, investigation and prosecution of animal fighting and abuse in the County.



GOALS, OBJECTIVES, AND PERFORMANCE MEASURES

GOAL 1: PROMOTE PUBLIC SAFETY BY PUNISHING CRIMINAL CONDUCT.

Objective: Continue to promptly, effectively and ethically prosecute criminal offenses.

Measurement	2009-10	2010-11	2011-12	2011-12	2012-13
	Actual	Actual	Target	Actual	Target
Percentage of prison sentences to felony defendants charged.	33%	34%	36%	39%	32%

The District Attorney’s Office continues to promote public safety by holding offenders accountable for their actions and seeking appropriate punishment for the offense. Prison sentences, where appropriate, bring justice to victims of crime and remove the most serious offenders from our communities. San Bernardino County’s per capita prison commitment rate is the highest in the state.

The Department anticipates the percentage of prison commitments will be less in 2012-13. With implementation of Public Safety Realignment (AB109) by the State of California, a greater emphasis is now made on placing convicted criminals into alternative programs rather than incarceration. The hope, according to proponents of this realignment, is to reduce prison population.

GOAL 2: ASSIST VICTIMS AND THEIR FAMILIES TO OVERCOME THE EFFECTS OF CRIME.

Objective: Minimize the impact of crime upon the lives of victims and provide assistance as they participate in the criminal justice system.

Measurement	2009-10	2010-11	2011-12	2011-12	2012-13
	Actual	Actual	Target	Actual	Target
Increase of cases where victim services are provided.	(9%)	(23%)	3%	0%	4%

The personal contact with a trained Victim Advocate is the best reassurance the Department can provide for traumatized victims as they find their way through an often-confusing justice system. Advocates provide emotional support and information regarding services and restitution to crime victims. It is the objective of the District Attorney’s Office to provide that personal contact in as many cases as possible and to increase that level of contact in succeeding years.

Although the actual performance measurement for 2011-12 reflects no increase from prior year, the target for 2012-13 demonstrates the Department’s continued strong commitment to serve victims of crime and is increased with additional staff now being funded through AB109. Services provided include the continuance of Camp Good Grief. This successful program is a joint effort between the Department’s Victim Services Division and Loma Linda University Children’s Hospital.

LAW AND JUSTICE



SUMMARY OF BUDGET UNITS

2012-13

	Appropriation	Revenue	Net County Cost	Fund Balance	Net Budget	Staffing
General Fund						
Criminal Prosecution	62,983,677	30,237,433	32,746,244			476
Total General Fund	62,983,677	30,237,433	32,746,244			476
Special Revenue Funds						
Special Revenue Funds - Consolidated	9,645,348	5,642,408		4,002,940		0
Total Special Revenue Funds	9,645,348	5,642,408		4,002,940		0
Total - All Funds	72,629,025	35,879,841	32,746,244	4,002,940		476

5-YEAR APPROPRIATION TREND

	2008-09	2009-10	2010-11	2011-12	2012-13
Criminal Prosecution	66,671,268	68,582,736	61,251,118	60,855,936	62,983,677
Real Estate Fraud Prosecution	2,922,534	1,833,531	1,085,923	1,629,878	1,567,585
Auto Insurance Fraud Prosecution	783,767	914,635	749,707	746,136	719,710
Workers' Comp Insurance Fraud Prosecution	2,011,258	2,517,418	2,564,599	2,613,846	2,551,674
Specialized Prosecutions	2,649,401	5,351,508	4,524,175	3,463,435	3,071,711
Vehicle Fees - Auto Theft	894,346	854,800	838,676	823,000	807,532
State Asset Forfeitures	300,000	366,740	202,012	188,012	187,177
Federal Asset Forfeitures	142,019	308,815	826,524	942,215	739,959
Total	76,374,593	80,730,183	72,042,734	71,262,458	72,629,025

5-YEAR REVENUE TREND

	2008-09	2009-10	2010-11	2011-12	2012-13
Criminal Prosecution	40,292,888	31,657,491	25,065,548	28,317,745	30,237,433
Real Estate Fraud Prosecution	1,000,000	842,000	784,400	1,620,467	720,000
Auto Insurance Fraud Prosecution	789,000	914,635	638,343	637,495	637,495
Workers' Comp Insurance Fraud Prosecution	1,899,000	2,274,640	2,175,000	2,173,413	2,173,413
Specialized Prosecutions	855,000	4,033,000	690,300	614,200	909,000
Vehicle Fees - Auto Theft	833,500	807,000	811,000	816,101	790,000
State Asset Forfeitures	300,000	306,000	224,000	187,924	160,000
Federal Asset Forfeitures	66,000	219,000	556,180	402,800	252,500
Total	46,035,388	41,053,766	30,944,771	34,770,145	35,879,841

5-YEAR NET COUNTY COST TREND

	2008-09	2009-10	2010-11	2011-12	2012-13
Criminal Prosecution	26,378,380	36,925,245	36,185,570	32,538,191	32,746,244
Total	26,378,380	36,925,245	36,185,570	32,538,191	32,746,244

5-YEAR FUND BALANCE TREND

	2008-09	2009-10	2010-11	2011-12	2012-13
Real Estate Fraud Prosecution	1,922,534	991,531	301,523	9,411	847,585
Auto Insurance Fraud Prosecution	(5,233)	0	111,364	108,641	82,215
Workers' Comp Insurance Fraud Prosecution	112,258	242,778	389,599	440,433	378,261
Specialized Prosecutions	1,794,401	1,318,508	3,833,875	2,849,235	2,162,711
Vehicle Fees - Auto Theft	60,846	47,800	27,676	6,899	17,532
State Asset Forfeitures	0	60,740	(21,988)	88	27,177
Federal Asset Forfeitures	76,019	89,815	270,344	539,415	487,459
Total	3,960,825	2,751,172	4,912,393	3,954,122	4,002,940



Criminal Prosecution

DESCRIPTION OF MAJOR SERVICES

The District Attorney is the public prosecutor and has the mandated responsibility to prosecute crimes committed within the County of San Bernardino, including all city jurisdictions, pursuant to Government Code 26500. Additionally the District Attorney’s Office: provides legal assistance for criminal investigations conducted by law enforcement agencies throughout the County; is the legal advisor to the Grand Jury and is authorized to submit evidence and seek indictments from that body; initiates civil commitment petitions to keep Mentally Disordered Offenders and Sexually Violent Predators in locked facilities; employs civil proceedings in asset forfeiture matters to seek the proceeds of criminal activity; and utilizes civil proceedings to seek sanctions and injunctive relief against businesses that pollute or create dangerous conditions for employees and citizens.

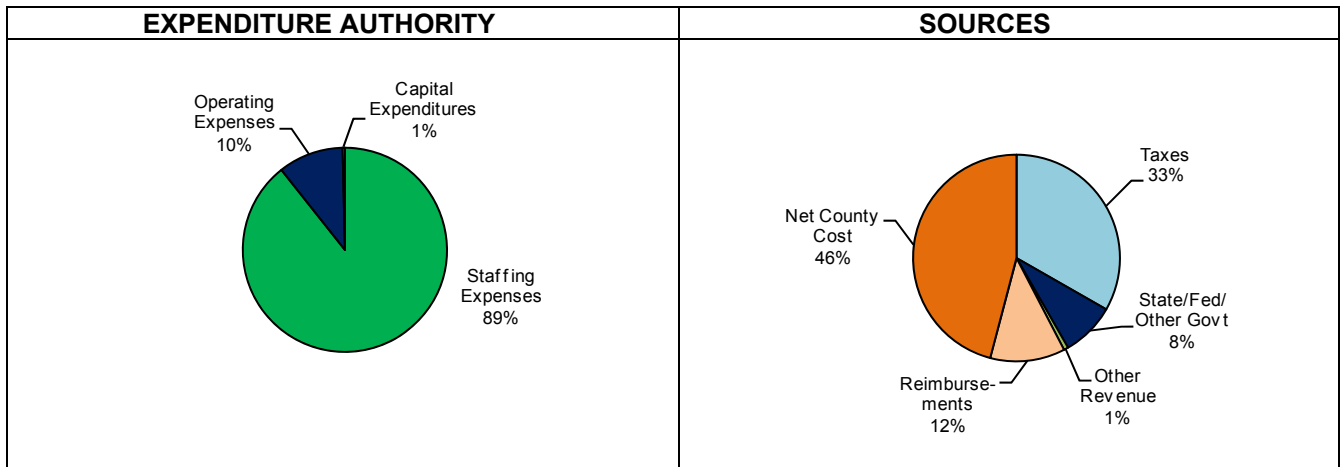
Budget at a Glance	
Total Expenditure Authority	\$71,330,192
Total Sources	\$38,583,948
Net County Cost	\$32,746,244
Total Staff	476
Funded by Net County Cost	46%

The District Attorney also has a duty to investigate crimes. District Attorney Investigators work to prepare cases for trial and initiate special criminal investigations. The Office also administers several state grants and other state revenues that fund prosecutors and investigators who handle Real Estate Fraud, Auto Insurance Fraud, Workers’ Compensation Fraud, and other special areas of prosecution.

The District Attorney has an ethical and legal responsibility to the victims of crime. The Office seeks restitution for victims and provides emotional and financial support for victims and their families.

Finally, as the public prosecutor who handles all cases in the name of The People, the District Attorney has a responsibility to keep the citizens of this county informed through regular interaction with the media and the public.

2012-13 ADOPTED BUDGET



LAW AND JUSTICE



BUDGETED STAFFING

STAFFING ANALYSIS					5-YEAR STAFFING TREND	
	2010-11	2011-12	2011-12	2012-13		
Authorized Positions	Final	Adopted	Final	Adopted		
Regular	492	459	469	472		
Limited Term	0	0	4	4		
Total	492	459	473	476		
Staffing Expenses	\$64,052,068	\$57,913,255	\$61,528,675	\$63,644,933		

ANALYSIS OF 2012-13 ADOPTED BUDGET

GROUP: Law and Justice
 DEPARTMENT: District Attorney - Criminal Prosecution
 FUND: General

BUDGET UNIT: AAA DAT
 FUNCTION: Public Protection
 ACTIVITY: Judicial

	2008-09	2009-10	2010-11	2011-12	2011-12	2012-13	Change From
	Actual	Actual	Actual	Actual	Final Budget	Adopted Budget	2011-12 Final Budget
Appropriation							
Staffing Expenses	64,481,895	64,288,497	64,052,068	61,514,896	61,528,675	63,644,933	2,116,258
Operating Expenses	6,815,983	5,967,371	6,126,962	7,436,066	7,442,208	7,360,259	(81,949)
Capital Expenditures	0	29,766	66,359	16,880	17,626	250,000	232,374
Contingencies	0	0	0	0	0	0	0
Total Exp Authority	71,297,878	70,285,634	70,245,389	68,967,842	68,988,509	71,255,192	2,266,683
Reimbursements	(2,108,038)	(1,892,794)	(9,132,312)	(8,198,605)	(8,207,573)	(8,346,515)	(138,942)
Total Appropriation	69,189,840	68,392,840	61,113,077	60,769,237	60,780,936	62,908,677	2,127,741
Operating Transfers Out	150,000	152,548	134,945	72,394	75,000	75,000	0
Total Requirements	69,339,840	68,545,388	61,248,022	60,841,631	60,855,936	62,983,677	2,127,741
Departmental Revenue							
Taxes	22,064,576	20,282,500	20,562,500	22,242,500	22,242,500	23,730,000	1,487,500
Realignment	0	0	0	0	0	0	0
State, Fed or Gov't Aid	3,726,661	3,704,197	4,006,287	5,644,012	5,623,522	6,004,410	380,888
Fee/Rate	33,311	196	181	0	200	0	(200)
Other Revenue	197,340	302,613	495,269	428,834	451,523	428,023	(23,500)
Total Revenue	26,021,888	24,289,506	25,064,237	28,315,346	28,317,745	30,162,433	1,844,688
Operating Transfers In	7,593,457	7,367,809	0	0	0	75,000	75,000
Total Sources	33,615,345	31,657,315	25,064,237	28,315,346	28,317,745	30,237,433	1,919,688
Net County Cost	35,724,495	36,888,073	36,183,785	32,526,285	32,538,191	32,746,244	208,053
Budgeted Staffing					473	476	3

BUDGET CHANGES AND OPERATIONAL IMPACT

Appropriation is increasing by \$2.1 million primarily due to increases in retirement costs and the addition of 3 new positions. However, the District Attorney's Office is projecting to offset this amount through an additional \$1.5 million of Prop 172 revenue based on the most current sales tax estimates provided by the County Administrative Office and the addition of \$0.6 million of AB 109 funding as part of the state's public safety realignment which is partially offset by reduction in other state funding.



MAJOR EXPENDITURES AND REVENUE IN 2012-13 ADOPTED BUDGET

The majority of expenditures for the District Attorney’s Office are for staffing and other operating costs necessary to achieve the Department’s core responsibility of prosecuting crimes. These expenditures are funded primarily through a \$32.7 million allocation of discretionary general funding (net county cost) and \$23.7 million of Prop 172 revenues required by law to be used for public safety activities. Other large financing sources include reimbursements of \$8.3 million mostly from the Department’s special revenue funds, \$2.0 million of AB 109 funding, \$1.3 million of SB90 reimbursements, and \$2.7 million from various state/federal grants.

STAFFING CHANGES AND OPERATIONAL IMPACT

The Department’s 2012-13 budgeted staffing is increased by 3 positions as follows:

- 1 Deputy District Attorney for the Let’s End Truancy (LET) Program funded through AB1913.
- 2 Victim Advocate positions to help provide crime victims with access to comprehensive and quality service. These positions are funded through AB109.

The 2012-13 budget also reflects the following three reclassifications:

- Office Assistant II to Office Assistant III
- Office Assistant III to Office Assistant IV
- Investigative Technician II to District Attorney Senior Investigator

2012-13 POSITION SUMMARY

Division	Regular	Limited Term	Total	Filled	Vacant	New	Total
Management	7	0	7	6	1	0	7
Bureau of Administration	9	0	9	8	1	0	9
Bureau of Investigation	72	4	76	69	7	0	76
Bureau of Victim Services	45	0	45	42	1	2	45
Bureau of Information Technology	15	0	15	12	3	0	15
Special Units	58	0	58	57	0	1	58
Criminal Prosecution - East Valley	78	0	78	77	1	0	78
Criminal Prosecution - West Valley	94	0	94	92	2	0	94
Criminal Prosecution - Desert	65	0	65	64	1	0	65
Juvenile Division	29	0	29	29	0	0	29
Total	472	4	476	456	17	3	476



Management	Bureau of Administration	Bureau of Investigation
<u>Classification</u>	<u>Classification</u>	<u>Classification</u>
1 Elected District Attorney	1 Chief of District Attorney Admin.	1 District Attorney Chief Investigator
1 Executive Secretary III	1 Secretary II	1 Executive Secretary I
2 Assistant District Attorney	1 Administrative Supervisor I	2 DA Assistant Chief Investigator
1 Executive Secretary II	2 Staff Analyst II	7 Supv. District Attorney Investigators
1 Special Asst. Deputy District Attorney	2 Payroll Specialist	39 Senior Investigators
1 Public Affairs Officer	1 Fiscal Specialist	14 Investigative Technician II
7 Total	1 Fiscal Assistant	3 Investigative Technician III
	9 Total	9 Office Assistant IV
		76 Total
Bureau of Victim Services	Bureau of Information Technology	Special Units
<u>Classification</u>	<u>Classification</u>	<u>Classification</u>
1 Victim Services Chief	1 Deputy Info Services Administrator	1 Chief Deputy District Attorney
5 Supervising Victim Advocate	1 Business Systems Analyst III	2 Supervising Deputy District Attorney
14 Victim Advocate II	1 Depart Systems Engineer	28 Deputy District Attorney
7 Victim Advocate I	1 Supv. Automated Systems Analyst II	5 Legal Research Attorney IV
9 Office Assistant III	5 Automated Systems Analyst I	2 Secretary II
2 Paralegal	2 Automated Systems Analyst II	7 Secretary I
2 Victim/Witness Claims Technician II	2 Business Systems Analyst I	1 Supervising Office Specialist
5 Victim/Witness Claims Technician I	1 Programmer Analyst II	2 Paralegals
45 Total	1 Automated Systems Technician	7 Office Assistant III
	15 Total	1 Accountant III
		1 Grand Jury Advisor
		1 Office Assistant II
		58 Total
Criminal Prosecution - East Valley	Criminal Prosecution - West Valley	Criminal Prosecution - Desert
<u>Classification</u>	<u>Classification</u>	<u>Classification</u>
1 Chief Deputy District Attorney	1 Chief Deputy District Attorney	1 Chief Deputy District Attorney
4 Supervising Deputy District Attorney	3 Supervising Deputy District Attorney	4 Supervising Deputy District Attorney
44 Deputy District Attorney	54 Deputy District Attorney	35 Deputy District Attorney
2 Secretary II	2 Secretary II	1 Secretary II
3 Secretary I	4 Secretary I	2 Secretary I
1 Supervising Office Specialist	1 Supervising Office Specialist	1 Supervising Office Specialist
2 Office Assistant IV	1 Supervising Office Assistant	3 Supervising Office Assistant
18 Office Assistant III	1 Office Assistant IV	18 Office Assistant III
3 Office Assistant II	26 Office Assistant III	65 Total
78 Total	1 Office Assistant II	
	94 Total	
Juvenile Division		
<u>Classification</u>		
1 Chief Deputy District Attorney		
1 Secretary II		
2 Supervising Deputy District Attorney		
16 Deputy District Attorney		
2 Secretary I		
6 Office Assistant III		
1 Office Assistant II		
29 Total		



Special Revenue Funds - Consolidated

DESCRIPTION OF MAJOR SERVICES

Real Estate Fraud Prosecution accounts for activity related to the investigation and prosecution of real estate fraud crimes in the County. On January 23, 1996, the Board of Supervisors (Board) adopted Resolution 96-14 to allow the County to collect, pursuant to Government Code 27388, a \$2 fee upon recording documents. On December 9, 2008, the Board adopted Resolution 2008-311 authorizing an increase of this fee from \$2.00 to \$3.00. This fee is used to fund costs of the District Attorney’s Real Estate Fraud Prosecution Unit. Revenue is transferred to the District Attorney’s Criminal Prosecution budget unit to primarily offset the cost of staff assigned to real estate fraud prosecution.

Budget at a Glance	
Total Expenditure Authority	\$9,645,348
Total Sources	\$5,642,408
Fund Balance	\$4,002,940
Total Staff	0

Auto Insurance Fraud Prosecution accounts for activity related to the investigation and prosecution of automobile insurance fraud. Insurance fraud is a particular problem for automobile policyholders. It contributes substantially to the highest cost of automobile insurance with particular significance in urban areas. Prevention of automobile insurance fraud can significantly reduce insurance claim payments and may therefore produce a commensurate reduction in automobile insurance premiums. Under direction of the Insurance Commissioner, the California Department of Insurance makes funds available, as authorized by Section 18971 of the California Insurance Code, to the District Attorney’s Office for automobile insurance fraud. Revenue is transferred to the District Attorney’s Criminal Prosecution budget unit to primarily offset the cost of staff assigned to auto insurance fraud prosecution.

Workers’ Compensation Insurance Fraud Prosecution accounts for activity related to the investigation and prosecution of workers’ compensation insurance fraud. The Department of Insurance, pursuant to Section 1871.83 of the California Insurance code, distributes funds to the District Attorney’s Office for this purpose. These assessed funds represent a percentage of the total premiums collected by workers’ compensation insurance companies and are distributed to investigate and prosecute workers’ compensation fraud claims or claims relating to the willful failure to secure the payment of workers’ compensation. Of all money collected by the state, 56% is retained by the state for fraud investigation and 44% is distributed statewide to District Attorney Offices through a grant program. These funds are administered through this budget unit. The insurance grant revenue is transferred to the District Attorney’s Criminal Prosecution budget unit primarily to offset the cost of staff assigned to the Workers’ Compensation Insurance Fraud Prosecution Unit.

Specialized Prosecutions was established in 1990-91 with funding from various fines and forfeitures for the District Attorney’s Office to prosecute crimes such as hazardous waste dumping, consumer fraud and violations of Cal/OSHA laws. Revenue is transferred to the District Attorney’s Criminal Prosecution budget unit to primarily offset the cost of staff associated with the Specialized Prosecution.

Vehicle Fees – Auto Theft accounts for the receipt of assessments on vehicles registered in San Bernardino County. In May of 1995, the Board adopted a resolution, pursuant to Vehicle Code 9250.14, to impose a \$1.00 fee on each San Bernardino County new and renewal vehicle registration. The revenue from this fee is used to enhance the capacity of local law enforcement and prosecutors to deter, investigate and prosecute vehicle theft crimes. This budget unit receives the District Attorney’s share of the registration assessment on vehicles registered in San Bernardino County. Revenue is transferred to the District Attorney’s Criminal Prosecution budget unit to primarily offset the costs of prosecuting and investigating automobile theft crimes.

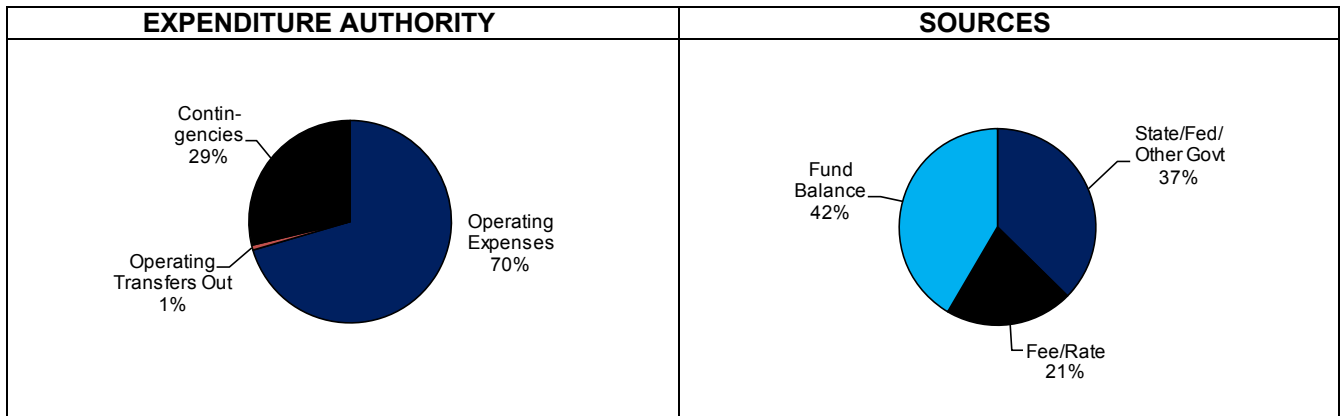
LAW AND JUSTICE



State Asset Forfeitures accounts for receipt of the District Attorney’s share of state asset forfeiture funds. The goal of asset forfeiture is to remove the profits from those who benefit from illegal activities. While seizures and arrests present a temporary setback for criminals, asset forfeiture is effective in permanently removing the proceeds from the criminal while diminishing their ability to continue the illegal enterprise. The law permits law enforcement agencies to use the proceeds of forfeiture to offset public safety expenses. Thus, law enforcement is able to convert criminal profits into supplemental funding to inhibit illegal activities. There is no staffing associated with this budget unit. Revenue is transferred to the District Attorney’s Criminal Prosecution budget unit to help offset the costs of processing asset forfeiture cases.

Federal Asset Forfeitures accounts for the share of federal asset forfeitures processed by the District Attorney’s Office. In 1984, Congress enacted the comprehensive Crime Control Act that gave federal prosecutors new forfeiture provisions to combat crime. Also created by this legislation was the Department of Justice Assets Forfeiture Fund. The proceeds from the sale of forfeited assets such as real property, vehicles, business, financial instruments, vessels, aircraft and jewelry are deposited into this fund and are subsequently used to further law enforcement initiatives. Under the Equitable Sharing Program, proceeds from sales are often shared with the state and local enforcement agencies that participated in the investigation, which led to the seizure of the assets. This important program enhances law enforcement cooperation between state/local agencies and federal agencies. The U.S. Department of Justice sets forth the terms by which law enforcement may use these funds. These funds are transferred to the District Attorney’s Criminal Prosecution budget unit to assist with the Asset Forfeitures Unit’s operating expenses and other public safety expenses according to the guidelines set forth by the U.S. Department of Justice.

2012-13 ADOPTED BUDGET



ANALYSIS OF 2012-13 ADOPTED BUDGET

GROUP: Law and Justice
 DEPARTMENT: District Attorney
 FUND: Special Revenue Funds - Consolidated

BUDGET UNIT: Various
 FUNCTION: Public Protection
 ACTIVITY: Judicial

	2008-09 Actual	2009-10 Actual	2010-11 Actual	2011-12 Actual	2011-12 Final Budget	2012-13 Adopted Budget	Change From 2011-12 Final Budget
Appropriation							
Staffing Expenses	0	0	0	0	0	0	0
Operating Expenses	0	0	6,836,889	6,399,296	6,430,117	6,797,073	366,956
Capital Expenditures	0	0	0	0	0	0	0
Contingencies	0	0	0	0	3,976,405	2,773,275	(1,203,130)
Total Exp Authority	0	0	6,836,889	6,399,296	10,406,522	9,570,348	(836,174)
Reimbursements	0	0	0	0	0	0	0
Total Appropriation	0	0	6,836,889	6,399,296	10,406,522	9,570,348	(836,174)
Operating Transfers Out	7,448,652	7,230,722	(1,071)	0	0	75,000	75,000
Total Requirements	7,448,652	7,230,722	6,835,818	6,399,296	10,406,522	9,645,348	(761,174)
Departmental Revenue							
Taxes	0	0	0	0	0	0	0
Realignment	0	0	0	0	0	0	0
State, Fed or Gov't Aid	2,322,572	3,803,976	3,623,978	3,616,819	3,626,109	3,600,908	(25,201)
Fee/Rate	3,889,140	5,556,513	2,212,049	2,027,195	2,027,785	2,030,000	2,215
Other Revenue	27,285	31,452	41,522	23,495	17,900	11,500	(6,400)
Total Revenue	6,238,997	9,391,941	5,877,549	5,667,509	5,671,794	5,642,408	(29,386)
Operating Transfers In	0	0	0	780,606	780,606	0	(780,606)
Total Sources	6,238,997	9,391,941	5,877,549	6,448,115	6,452,400	5,642,408	(809,992)
				Fund Balance	3,954,122	4,002,940	48,818
				Budgeted Staffing	0	0	0

BUDGET CHANGES AND OPERATIONAL IMPACT

Appropriation is decreasing by \$761,174 primarily due to less financing available for real estate fraud prosecution, specialized prosecutions, and the Asset Forfeiture Unit. Departmental revenue is decreasing by \$809,992 primarily because of a one-time operating transfer received from the County general fund in 2011-12 to augment the Department's ability to reduce the backlog of real estate fraud cases.

DETAIL OF 2012-13 ADOPTED BUDGET

	2012-13			
	Appropriation	Revenue	Fund Balance	Staffing *
Special Revenue Funds				
Real Estate Fraud Prosecution (Fund REB)	1,567,585	720,000	847,585	6
Auto Insurance Fraud Prosecution (Fund RIP)	719,710	637,495	82,215	4
Workers' Comp Insurance Fraud (Fund ROB)	2,551,674	2,173,413	378,261	13
Specialized Prosecutions (Fund SBI)	3,071,711	909,000	2,162,711	7
Vehicle Fees - Auto Theft (Fund SDM)	807,532	790,000	17,532	5
State Asset Forfeitures (Fund SBH)	187,177	160,000	27,177	0
Federal Asset Forfeitures (Fund SDN)	739,959	252,500	487,459	0
Total Special Revenue Funds	9,645,348	5,642,408	4,002,940	35

*Staffing costs for these Special Revenue Funds are located within the District Attorney's General Fund budget unit; however, the funding for these positions is located within these special revenue funds.



Real Estate Fraud Prosecution: Appropriation of \$1,567,585 includes transfers to the Department's Criminal Prosecution budget unit for the cost of staff assigned to real estate fraud prosecution (\$974,028), amount set aside in contingencies for future allocation (\$593,515), and COWCAP charges (\$42). Revenue of \$720,000 represents the amount anticipated from the \$3.00 fee collected on recording documents for real estate fraud prosecution.

Auto Insurance Fraud Prosecution: Appropriation of \$719,710 includes transfers to the Department's Criminal Prosecution budget unit for the cost of staff assigned to auto insurance fraud prosecution (\$671,062), amount set aside in contingencies for future allocation (\$48,600), and COWCAP charges (\$48). Revenue of \$637,495 represents projected grant funds from the California Department of Insurance.

Workers' Compensation Insurance Fraud Prosecution: Appropriation of \$2,551,674 includes transfers to the Department's Criminal Prosecution budget unit for the cost of staff assigned to workers' compensation insurance fraud prosecution (\$2,346,596), amount set aside in contingencies for future allocation (\$205,037), and COWCAP charges (\$41). Revenue of \$2,173,413 reflects projected grant funds from the California Department of Insurance.

Specialized Prosecutions: Appropriation of \$3,071,711 includes transfers to the Department's Criminal Prosecution budget unit for staffing and other costs related to specialized prosecutions (\$1,474,317), amount set aside in contingencies for future allocation (\$1,522,231), operating transfers to County Fire for the cost of one half-time Hazardous Materials Specialist (\$75,000), and COWCAP charges (\$163). Revenue of \$909,000 reflects the Department's estimate of case settlements anticipated in 2012-13 (\$900,000) and interest earnings (\$9,000).

Vehicle Fees – Auto Theft: Appropriation of \$807,532 includes transfers to the Department's Criminal Prosecution budget unit for costs associated with prosecuting and investigating automobile theft crimes (\$790,000), amount set aside in contingencies for future allocation (\$17,478), and COWCAP charges (\$54). Revenue of \$790,000 represents new and renewal registration assessment on vehicles registered in San Bernardino County.

State Asset Forfeitures: Appropriation of \$187,177 includes transfers to the Department's Criminal Prosecution budget unit to help offset the costs of processing asset forfeiture cases (\$150,000), amount set aside in contingencies for future allocation (\$36,972), and COWCAP charges (\$205). Revenue of \$160,000 reflects the anticipated proceeds from asset forfeitures.

Federal Asset Forfeitures: Appropriation of \$739,959 includes transfers to the Department's Criminal Prosecution budget unit to assist with operating expenses of the Asset Forfeiture Unit (\$390,380), amount set aside in contingencies for future allocation (\$349,442), and COWCAP charges (\$137). Revenue of \$252,500 represents proceeds from federal asset forfeiture funds (\$250,000) and interest earnings (\$2,500).

