

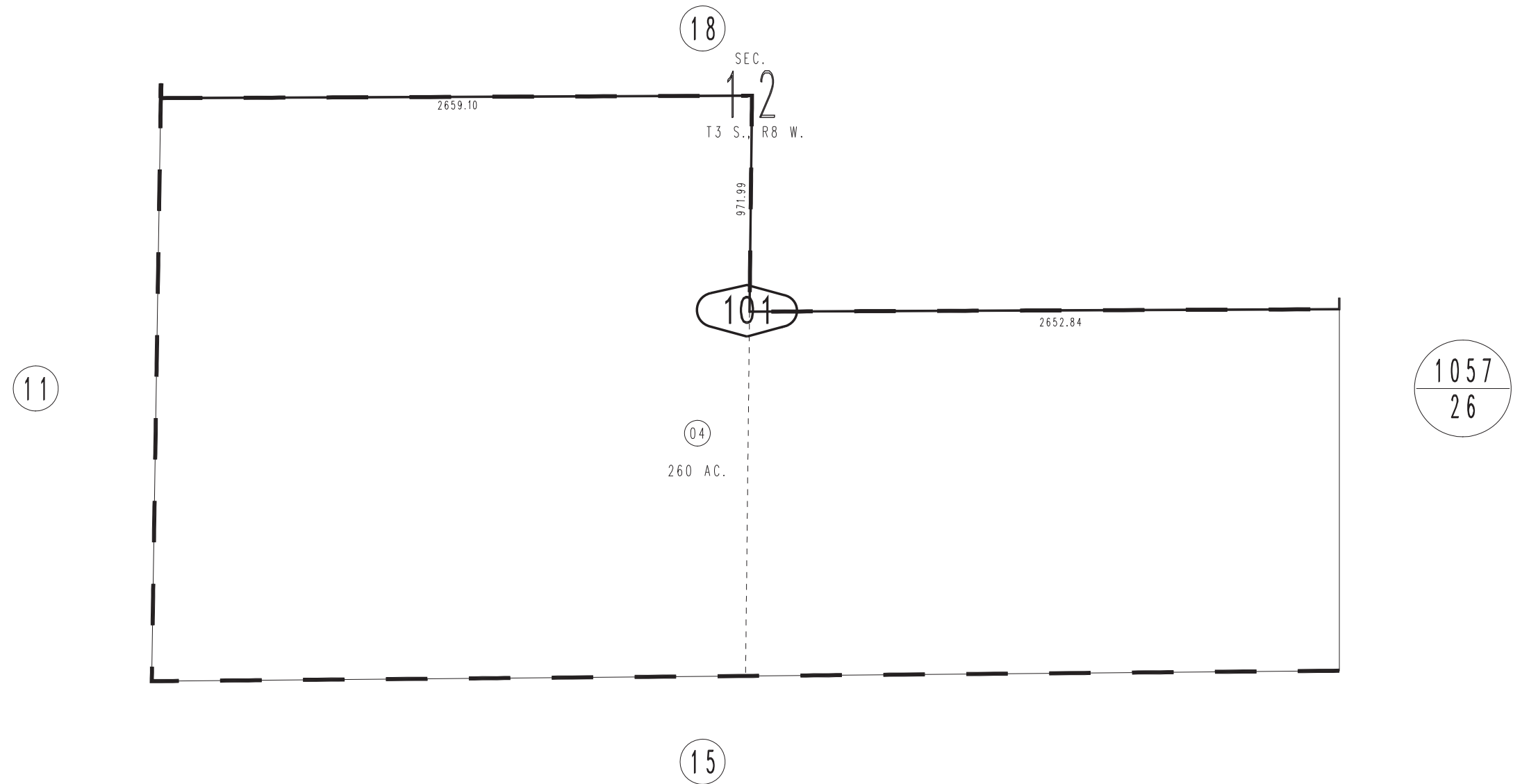
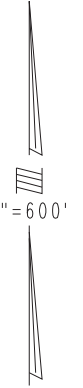
THIS MAP IS FOR THE PURPOSE
OF AD VALOREM TAXATION ONLY.



Sec. 12 T.3S., R.8W., S.B.&M.

City of Chino Hills
Tax Rate Area
24002

1033 - 10



MAY 1972

Assessor's Map
Book 1033 Page 10
San Bernardino County

REVISED
10/24/06 BK